

# ADULT FINE ARTS DEPARTMENT



## Rules:

- Eligibility: Open to California residents, ages 19 or older.
- Entry Limit: No Limit
- Exhibits must not have been shown previously at the Yuba-Sutter Fair in any category.
- Work must have been completed within (24) twenty-four months of opening date of fair and was not entered in the 2025 Yuba-Sutter Fair.
- Every entry will be hung unless entries exceed hanging space. If this should occur, selection will be unbiased and based on judged results.
- Every exhibitor will have a minimum of three (3) paintings hung.
- Only original artwork will be accepted.
- No water or motor driven features allowed.
- In determining the proper division to enter your painting, use the main subject of the painting.
- Use the medium to determine the correct class number.
- You may only enter in one of following three (3) Classifications:
  1. **PROFESSIONAL:** A person who engages in the activity for monetary profit, i.e. someone who derives income from Fine Arts such as a Paid Instructor (not a volunteer), Teacher or Professor of Fine Arts, or an artist who exhibits his/her work for sale, from which a commission is paid.
  2. **SEMI-PROFESSIONAL:** Open to those whose returns from sales exceed the cost of materials and/or gains of monetary profit to supplement their income.
  3. **NOVICE/AMATEUR:** Open to those who engage in Art as a hobby, whose returns from sales, if any, do not exceed the cost of the materials for the articles sold.
- All entries will be judged but will be displayed at the discretion of Management.
- The Yuba-Sutter Fair reserves the right to reject any work that does not comply with the rules and/or definitions of questionable taste for a family event.
- Paintings of nude figures will not be accepted for judging or display.

- Fair Management shall not be responsible for any accidental loss that may occur to exhibitors or exhibits at any showing. Exhibitors shall hold Management harmless and indemnify it against any legal proceeding arising from such accident or loss.

**How to Prepare Painting Exhibits:**

1. Paintings and drawings must be framed. Size cannot exceed 48" x 36". This measurement includes the frame.
2. Each painting must be securely wired for hanging. Measure to be sure the screw eyes are evenly spaced so that the wire will be even, and the painting will hang straight.
3. Paintings with painted sides and all staples in the rear are considered framed. The following will disqualify your entry:
  - Metal hanging brackets
  - Paper or glass frame
  - Tape or string from which to hang painting
  - Bracketed frames
  - Copies of original work done by any process.

**NOVICE/AMATEUR - ART AND SCULPTURES**

**Awards Offered:**

- **BEST OF SHOW:** \$25.00
- **RESERVE BEST OF SHOW:** \$15.00
- **BEST OF DIVISION:** Rosette

**Premiums Offered:**                      First: \$15.00                      Second: \$12.00                      Third: \$10.00

**Entry Information:**

- Entry Fee: \$3.00
- Entries are to be delivered to the Franklin Hall.
- See Still Exhibit Schedule for receiving of entry, judging and pick-up dates/times.

**DIVISION 101 – NOVICE/AMATEUR ARTS**

Paintings & Drawings

**Class**

- 1 Oil /Acrylic
- 2 Watercolor
- 3 Pen/Pencil/Charcoal/Pastel
- 4 Mixed Media
- 5 Any Other (specify)

**DIVISION 102 – NOVICE/AMATEUR SCULPTURES**

**Class**

- 1 Clay/Ceramic (no soft material)
- 2 Any Other (specify)

## SEMI-PROFESSIONAL - ART AND SCULPTURES

### Awards Offered:

- **BEST OF SHOW:** \$25.00
- **RESERVE BEST OF SHOW:** \$15.00
- **BEST OF DIVISION:** Rosette

**Premiums Offered:**                      First: \$15.00                      Second: \$12.00                      Third: \$10.00

### Entry Information:

- Entry Fee: \$3.00
- Entries are to be delivered to the Franklin Hall.
- See Still Exhibit Schedule for receiving of entry, judging and pick-up dates/times.

### DIVISION 103 – SEMI-PROFESSIONAL ARTS

Paintings & Drawings

#### Class

- 1 Oil /Acrylic
- 2 Watercolor
- 3 Pen/Pencil/Charcoal/Pastel
- 4 Mixed Media
- 5 Any Other (specify)

### DIVISION 104 – SEMI-PROFESSIONAL SCULPTURES

#### Class

- 1 Clay/Ceramic (no soft material)
- 2 Any Other (specify)



## PROFESSIONAL - ART AND SCULPTURES

### Awards Offered:

- **BEST OF SHOW:** \$25.00
- **RESERVE BEST OF SHOW:** \$15.00
- **BEST OF DIVISION:** Rosette

**Premiums Offered:**                      First: \$15.00                      Second: \$12.00                      Third: \$10.00

### Entry Information:

- Entry Fee: \$3.00
- Entries are to be delivered to the Franklin Hall.
- See Still Exhibit Schedule for receiving of entry, judging and pick-up dates/times.

### DIVISION 105 – PROFESSIONAL ARTS

Paintings & Drawings

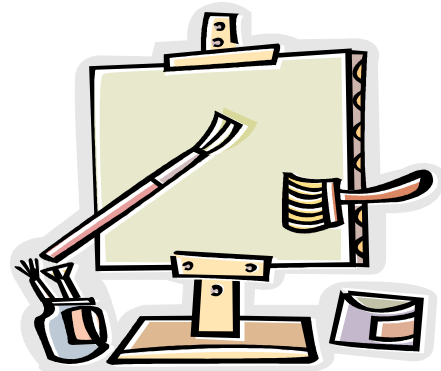
#### Class

- 1 Oil /Acrylic
- 2 Watercolor
- 3 Pen/Pencil/Charcoal/Pastel
- 4 Mixed Media
- 5 Any Other (specify)

### DIVISION 106 – PROFESSIONAL SCULPTURES

#### Class

- 1 Clay/Ceramic (no soft material)
- 2 Any Other (specify)



# WINE & CANVAS



## Awards Offered:

- **BEST OF SHOW:** \$25.00
- **RESERVE BEST OF SHOW:** \$15.00
- **BEST OF DIVISION:** Rosette

**Premiums Offered:** First: \$10.00 Second: \$7.00 Third: \$5.00

## Entry Information:

- Entry Fee: \$1.00
- Entries are to be delivered to the Franklin Hall.
- See Still Exhibit Schedule for receiving of entry, judging and pick-up dates/times.

## Rules:

- Eligibility: Open to California residents, ages 19 or older.
- Entry Limit: None. Enter as many exhibits as you wish.
- Must have been painted in the last year and not entered in 2025. (June 1, 2025 – June 1, 2026)

## DIVISION 109 - WINE AND CANVAS

### Class

- 1 Animals
- 2 Floral
- 3 Nature
- 4 Holiday
- 5 Any Other (specify)

