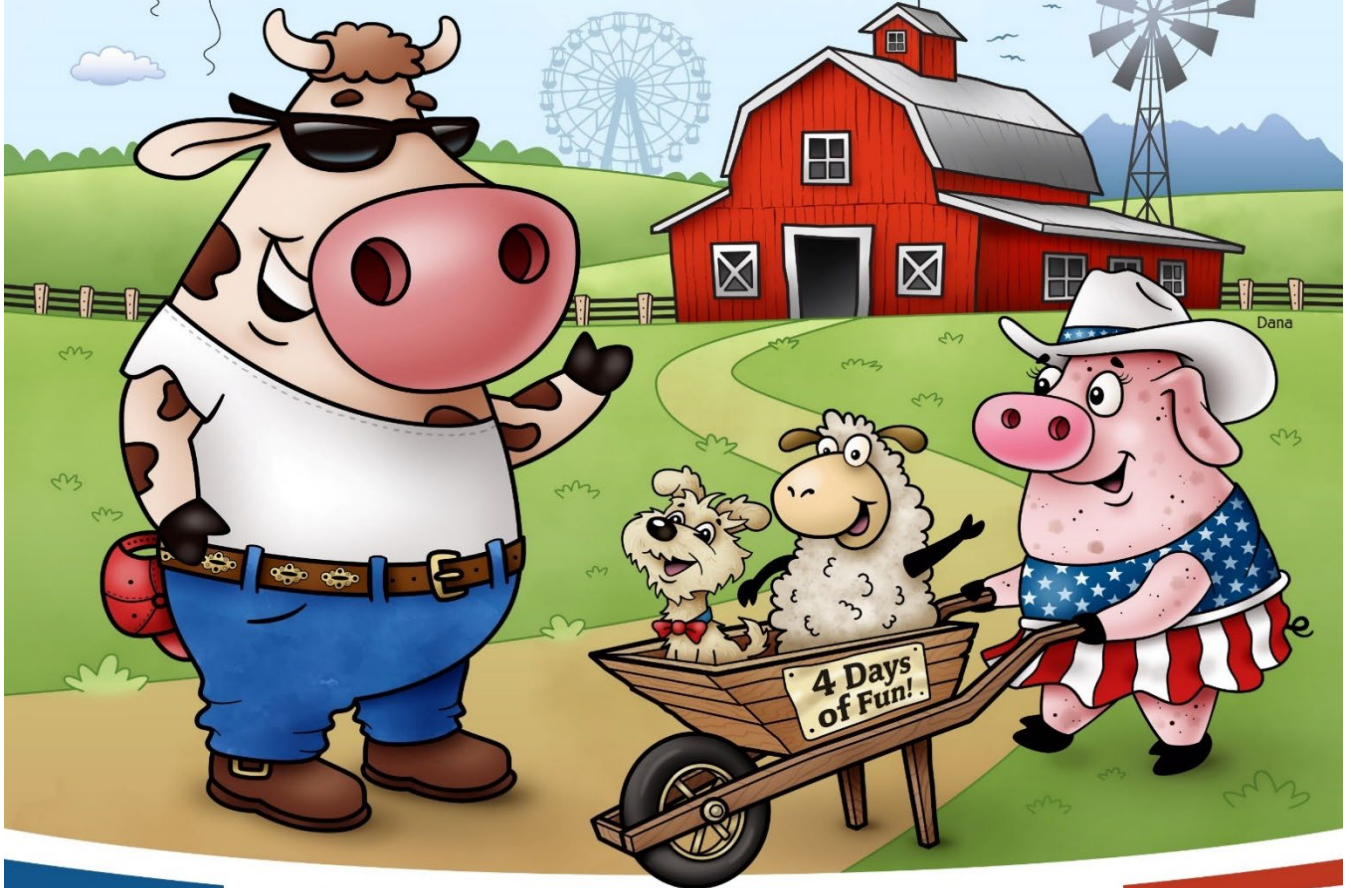


STILL EXHIBITS
2026 COMPETITION GUIDE

YUBA-SUTTER
FAIR

June 25-28
2026



BARN IN **THE USA**



GO ONLINE FOR FULL SCHEDULE AND DETAILS: WWW.YSFAIR.COM



STILL EXHIBITS

2026 COMPETITION GUIDE

Showcasing our area's best!

For more than 160 years the Yuba-Sutter Fair has been showcasing the talents and achievements of our local communities. The friendly competitions are designed to inspire the exhibitors and highlight their achievements!

Entering projects in the Yuba-Sutter Fair Still Exhibits Competition allows you the opportunity to showcase your efforts and creative talents.

We have developed many new classes and offering higher premium payouts and more awards to provide a greater incentive and opportunity for people of all ages to enter their projects!

More than 50,000 visitors are expected to visit the Yuba-Sutter Fair this year. Your work is an integral part of the fair's celebration, and we look forward to placing your talent on display at the Yuba-Sutter Fair from June 25-28, 2026.

We encourage you to enter today and begin making lasting memories for yourself, and for the thousands of our Fair patrons!

Good luck to all exhibitors!

Sincerely,

David Dillabo

David Dillabo

Chief Executive Officer

13th District Agricultural Association Board of Directors

Board Chair – Kulwant Johl
Karm Bains
Erin Cucchi
Jill LeVake
Jennifer Matteoli
Alice Munger
Joe Serger
Andrew Stresser

13th District Agricultural Association Staff

Chief Executive Officer
David Dillabo

Entry Representative
Sherrie Skaggs

Office Assistant
Rayna Barden

Maintenance Staff
Todd Peters

TABLE OF CONTENTS

2026 COMPETITION GUIDE

What's New in 2026?	6
Important Information to Remember	6
Key Dates & Deadlines	7
Contact Info	7
Daily Still Exhibit Schedule	8
Local Rules	11

ADULT STILL EXHIBITS DEPARTMENT 13

Adult – Home Arts Divisions 13

Preserved Foods	14
Home Brew & Wine	17
Baking and Confections	19
Clothing and Textiles	22
Quilts	24
Quilt Block Contest	26
Arts, Crafts & Hobbies	27

Adult – Fine Arts Divisions 30

Novice/Amateur Art and Sculptures	31
Semi-Professional Art and Sculptures	32
Professional Art and Sculptures	33
Wine & Canvas	34

Adult – Arts & Crafts Special Contests 35

Pop Art	35
Garbage Can Art	36
Photo Cut-Out Props	37
Barn Quilts	38

Adult – Photography Divisions 39

Novice/Amateur Photography	40
Professional Photography	41

Adult – Floriculture Divisions 43

Potted Plants	43
Floral Arrangements	45
Cut Flower Show	46

- Adult – Floriculture Special Contests** 48
 - Flower Garden Competition 48
 - Flowering Wine Barrel Competition 49
 - Flowering Wagon/Wheel Barrel Competition 50

- Adult – Agriculture/Horticulture Divisions** 52
 - Vegetables and Deciduous Fruits 53
 - Nuts 55
 - Eggs 55

- YOUTH & TEEN STILL EXHIBITS DEPARTMENT** 56
 - Youth & Teen – Home Arts Divisions** 57
 - Preserved Foods 58
 - Baking & Confections 60
 - Clothing & Textiles 63
 - Arts, Crafts & Hobbies 65
 - Paintings & Drawings 67
 - Coloring Contest 69
 - School Projects 70

 - Youth & Teen – Arts & Crafts Special Contests** 71
 - Pop Art 71
 - Garbage Can Art 72
 - Photo Cut-Out Props 73
 - Barn Quilts 74
 - School Spirit 75

 - Youth & Teen – Photography Divisions** 76
 - Black & White Photography 77
 - Color Photography 77
 - Selfies 78

 - Youth & Teen – Floriculture Divisions** 79
 - Floral Arrangements 80
 - Cut Flower Show 81

 - Youth & Teen – Floriculture Special Contests** 83
 - Flowering Wine Barrel Competition 84
 - Flowering Wagon/Wheel Barrel Competition 85

 - Youth & Teen – Agriculture/Horticulture Divisions** 86
 - Vegetables & Deciduous Fruits 87
 - Novelty Produce 89
 - Produce Art 89
 - Plants 90
 - Nuts 91
 - Eggs 91

Yuba-Sutter Counties Commodities Competition 92

4-H & FFA INDUSTRIAL/VOCATIONAL SKILLS DEPARTMENT 94

4-H & FFA Industrial/Vocational Skill Project Divisions 95

Industrial/Vocational Skill Projects *(Not in auction)* 95

Industrial/Vocational Skill Live Auction Projects 96

Industrial/Vocational Skill Silent Auction Projects 97

4-H Archery Divisions 99

Recurve Bow 100

Compound Bow without Sights 101

Compound Bow with Sights 101

Still Exhibit Entry Form Print as needed

What's New in 2026?

There are many new updates and changes for the 2026 Program. Many of the significant changes and updates are listed below as a quick point of information. Details on the changes can be found in the Competition Guidebook.

- ✓ We have eliminated the Sweepstakes Award.
- ✓ New Cut Flowers have been added to the Divisions.



IMPORTANT DATES to remember

Online registration opens January 1

Entry Deadline	Sunday, May 31, by Midnight
Entry Delivery	Friday, June 12, 2pm - 8pm
.....	Saturday, June 13, 8 am-6 pm
Entry Pickup	Monday, June 29, 9am-6 pm

Key Dates & Deadlines

Contact: Sherrie Skaggs

Exhibits Representative

Phone: (530) 674-1280 & E-mail: sskaggs@ysfair.com

January 1	Online Entry Registration Available
May 31	ENTRY DEADLINE For all Still Exhibits, Vocational /Industrial Projects & Archery
June 12-13	DELIVERY OF EXHIBITS Deliver all entries of: Preserved Foods, Clothing & Textiles, Arts & Crafts, Quilts, Hobbies & Collections, Computer Projects, Home Furnishing, Photography, Fine Arts
June 14	JUDGING OF STILL EXHIBITS Preserved Foods, Clothing & Textiles, Arts & Crafts, Quilts, Hobbies & Collections, Computer Projects, Home Furnishing, Photography, Fine Arts
June 19	DELIVERY OF EXHIBITS Deliver all Vocational / Industrial Projects
June 22 - 24	EXHIBIT SETUP Flower Gardens, Flowering Wheel Barrels, Wine Barrels
June 24	DELIVERY OF EXHIBITS Floriculture, Potted Plants, Ag Horticulture, Vegetables, Deciduous Fruits, Nuts, Eggs, Baked Goods & Confections
June 25	Produce Characters, Thursday's Daily Arrangements & Cut Flowers JUDGING OF VOCATIONAL/INDUSTRIAL PROJECTS
June 25	DELIVERY OF EXHIBITS Friday's Daily Arrangements & Cut Flowers
June 26	DELIVERY OF EXHIBITS Saturday's Daily Arrangements & Cut Flowers
June 27	DELIVERY OF EXHIBITS Sunday's Daily Arrangements & Cut Flowers
June 28	PICKUP EXHIBITS All Still Exhibits are available for pickup

Still Exhibits Schedule

(Subject to Change)

Friday, June 12, 2026

2 pm – 8 pm

Entry Delivery: Deliver the following exhibits to Franklin Hall

- Preserved Foods Entries
- Clothing & Textiles Entries
- Arts & Crafts Entries
- Quilts Entries
- Hobbies & Collections Entries
- Computer Project Entries
- Home Furnishing Entries
- Photography Entries
- Fine Art Entries

Saturday, June 13, 2026

9 am – 6 pm

Entry Delivery: DEADLINE to deliver the following exhibits to Franklin Hall

- Preserved Foods Entries
- Clothing & Textiles Entries
- Arts & Crafts Entries
- Quilts Entries
- Hobbies & Collections Entries
- Computer Project Entries
- Home Furnishing Entries
- Photography Entries
- Fine Art Entries

Sunday, June 14, 2026

9 am

Judging: Judging of Still Exhibits (Closed to the public)

3 pm – 6 pm

Pick-up of all open jar preserved foods at Franklin Hall

Monday, June 15, 2026

9 am - 6 pm

Pick-up of all open jar preserved foods at Franklin Hall

Friday, June 19, 2026

9 am – 5pm

Entry Delivery: Deliver all Vocational/Industrial Projects to Franklin Hall

Still Exhibits Schedule

(Subject to Change)

Monday, June 22, 2026

10 am – 6 pm **Entry Setup:** Flower Garden, Flowering Wheel Barrel & Wine Barrel Competition Set-up

10 am – 6 pm **Entry Setup:** Commodities Display Set-up

Tuesday, June 23, 2026

10 am – 6 pm **Entry Setup:** Flower Garden, Flowering Wheel Barrel & Wine Barrel Competition Set-up

10 am – 6 pm **Entry Setup:** Commodities Display Set-up

Wednesday, June 24, 2026

10 am – 6 pm **Entry Setup:** Flower Garden, Flowering Wheel Barrel & Wine Barrel Competition Set-up

10 am – 6 pm **Entry Setup:** Commodities Display Set-up

10 am – 6 pm **Entry Delivery:** Deliver the following exhibits to the Franklin Hall

- Floriculture
- Potted Plants
- Ag Horticulture
- Vegetables
- Deciduous Fruits
- Nuts
- Eggs

4 pm – 8 pm **Entry Delivery:** Deliver the following exhibits to the Franklin Hall

- All Baked Goods & Confection Entries

Thursday, June 25, 2026 “Opening Day of Fair”

9 am **Judging:** Judging of Vocational Projects

10 am – 11 am **Entry Delivery:** Deadline to deliver the following exhibits to the Franklin Hall

- Produce Characters
- Thursday's Entries of Daily Arrangements & Cut Flowers

Still Exhibits Schedule

(Subject to Change)

Friday, June 26, 2026

- 10 am – 11 am **Entry Delivery:** Deadline to deliver the following exhibits to the Franklin Hall
- Friday's Entries of Daily Arrangements & Cut Flowers

Saturday, June 27, 2026

- 10 am – 11 am **Entry Delivery:** Deadline to deliver the following exhibits to the Franklin Hall
- Saturday's Entries of Daily Arrangements & Cut Flowers

Sunday, June 28, 2026

- 10 am – 11 am **Entry Delivery:** Deadline to deliver the following exhibits to the Franklin Hall
- Sunday's Entries of Daily Arrangements & Cut Flowers

Monday, June 29, 2026

- 9 am – 6 pm **Entry Pickup** – The following exhibits can be picked up at Franklin Hall
- Preserved Foods Entries
 - Clothing & Textiles Entries
 - Arts & Crafts Entries
 - Quilts Entries
 - Hobbies & Collections Entries
 - Computer Project Entries
 - Home Furnishing Entries
 - Photography Entries
 - Fine Art Entries
- 9 am – 6 pm **Entry Pickup** – The following exhibits can be picked up at Franklin Hall
- Vocational/Industrial Project Entries
- 9 am – 6 pm **Entry Pickup** – The following exhibits can be picked up at Franklin Hall
- Floriculture
 - Potted Plants
 - Ag Horticulture
 - Vegetables
 - Deciduous Fruits
 - Nuts
 - Eggs

Local Rules

General Rules

1. All State and Local Rules apply.
2. No late entries will be accepted.
3. No refunds of entry fees.
4. The California Fairs State Scorecards apply to all exhibits and entries, unless otherwise specified.
5. All information contained in the Yuba-Sutter Fair Competition Guidebook is subject to be amended and/or changed.
6. The owner or authorized agent(s) must present exhibits in person. Exhibits will not be accepted by mail. Please note the days and hours that exhibits will be received and judged in your division, as major changes may have been made in that area.
7. No entry will be accepted where an exhibitor prescribes conditions under which he/she will exhibit.
8. Fair Management is not responsible for finding errors on your entry form. Management may refuse entries but will do so without prejudice or discrimination.
9. Failure of any exhibitor to maintain his/her exhibit to the satisfaction of the Fair Management may result in removal of the exhibit, the cancellation of awards, premiums and Auction proceeds.
10. All judges are provided by the Yuba-Sutter Fair Management and, in every instance, the decision made by the Judge is final.
11. Cash awards will be paid only as recorded on signed Judging Sheet and only to the exhibitor.
12. No exhibitor shall receive more than two cash awards in any one class using American judging system.
13. When an exhibitor earns more than two awards in a class, the exhibitor will receive the two highest cash awards, and the lesser cash awards will be moved down the placings to other exhibitors.
14. Placing of ribbons does not guarantee correct judging placement. Only the official placing stated on the judging sheet(s) constitutes the final placement.
15. No Exhibitor or spectator is allowed in the building while judging takes place.
16. Exhibits will remain in place for the duration of the Fair.
17. Make all checks payable to: YUBA-SUTTER FAIR (Returned checks will be subject to a \$35 fee)
18. NO motorized scooters, razor scooters, bicycles, skateboards or hover boards are allowed on the fairgrounds or in the livestock area.

Exhibitor Responsibility

19. By submitting an application for entry, participants agree to comply with all rules and regulations governing the Yuba-Sutter Fair as published in the Competition Guidebook.
20. The fair will not be responsible for exhibits left 24 hours after the close of the fair. All exhibits and equipment MUST be claimed and removed within 5 days. After 5 days the items become property of the fair.

21. Premium checks must be cashed by **December 31, 2026**. No check will be reissued or the time extended. Questions on discrepancies in check amounts must be made prior to **July 31, 2026**. No premium adjustment will be made after that date.
22. Each exhibitor is responsible for any loss, consequential or otherwise, injury or damage done to or occasioned by, or arising from, any animal or article exhibited by him/her. Exhibitors shall indemnify the 13th District Agricultural Association and the counties of Yuba and Sutter against all legal proceedings in regard thereto.
23. A Junior Exhibitor, who in the opinion of Fair Management, 4-H Leaders or FFA Advisor, fails to conform to or accept the set standards of conduct as designated by his/her organization or by the 13th DAA Rules, may be disqualified from competition and removed from the fairgrounds along with his/her entries. This decision may be made at the discretion of his/her leader, advisor or Fair Management.
24. The Yuba-Sutter Fair has the right to refuse entry forms signed by unauthorized leaders and/or advisors. Before entry deadline, Fair management also may ask that the community leader and/or County 4-H advisor to sign/authorize entries if proof and/or suspicion of wrong-doing has occurred.
25. Vehicles belonging to participant/volunteers are requested to park in the parking lot and walk onto the grounds to their assigned building.
26. Glass containers are not allowed on the grounds.
27. Animals are not permitted on the grounds unless they are part of an authorized show or exhibit. Service Animals are the only exception. Guide Dog puppies may be on the grounds and must comply with Fair Board Policy.

Exhibitor Divisions

28. Adult Divisions: For exhibitors nineteen (19) years and older.
29. Youth and Teen Divisions: For exhibitors ages five (5) to eighteen (18) years prior to January 1, 2026.

Fire Proofing of Exhibits

30. Display materials and decorations must be made from flameproof material or treated and maintained in a flame-retardant condition.
31. One-way to accomplish fireproofing is to buy suitable fireproofing material from a hardware store. You can spray or soak your paper, cloth, etc. in this material to make it flameproof or fire retardant.
32. For more information on fireproofing, call the Yuba City Fire Department and ask for the Fire Prevention Officer.



ADULT STILL EXHIBITS DEPARTMENT

Rules:

- Eligibility: Open to California residents, ages 19 or older.
- Judging: Unless otherwise noted, all divisions in the Adult Still Exhibits Department will be judged using the American Judging System. Each entry in a class is judged in comparison to other entries in the class. Awards are given according to relative merit with the potential for no more than one first, one second and one third place.
- Enter exhibits online at ysfair.com
- **Entry Deadline: May 31, 2026**
- No late entries will be accepted.
- All Local & State Rules apply.
- Entries must have been prepared by the exhibitor.
- The Judge has the authority to transfer any entry from one Division/Class to another. The Judge's decision is final.
- Any Other Classes are for those items that do not fit into the classes described in the Division and Class listing. Items entered in the Any Other Class must not fit into any other class available in the Division and Class listings.

ADULT PRESERVED FOODS



Awards Offered:

- **BEST OF SHOW:** \$25.00 (One awarded for Divisions 1-5 and one awarded for Divisions 6-7)
- **RESERVE BEST OF SHOW:** \$15.00 (One awarded for Divisions 1-5 and one awarded for Divisions 6-7)
- **BEST OF DIVISION:** Rosette

Premiums Offered: First: \$5.00 Second: \$4.00 Third: \$2.00

Entry Information:

- Entry Fee: \$1.00
- Entry Limit: No Limit
- Entries are to be delivered to the Franklin Hall.
- See Still Exhibit Schedule for receiving of entry, judging and pick-up dates/times.

Rules:

- Eligibility: Open to California residents, ages 19 or older.
- All entries in this division must be home prepared and processed by the exhibitor within one (1) year of the opening date of the Fair.
- Items, which have been shown at any previous Yuba-Sutter Fair, are NOT eligible.
- Standard Jar: A container specifically or specially designed for canning purposes. Paraffin seals will not be accepted. All canning must be sealed in jars.
- Containers to use:
 - Fruits and Vegetables- Pint or quart, clear glass, narrow or wide mouth Mason jar.
 - Jams, Jellies, and Preserves- Pint or ½ pint, clear glass jelly jars (sealed with a lid), or clear mason jars.
- Non-Acid Foods- All vegetables must be canned under pressure. Low acid fruit, such as figs, should be made with more acid by adding lemon juice as directed in the University Agricultural Extension Service leaflet, USDA Complete Guide to Home Canning (2015).
- Tomatoes and fruits (not including their juices) must be processed in a boiling water bath.

- Exhibits must be accurately labeled on the bottom of the jar with exhibitor's name and name of item.
- Exhibitors are required to bring two (2) jars of each entry.
- One will be used for the actual judging process; the other will be used for display.
- Open jars may be picked up on Monday, **June 15, 2026** from 9 am – 6 pm in Franklin Hall only.
- Any Other classes are for those items that do not fit into the classes described in the Division and Class listing.

DIVISION 1 – CANNED FRUIT

Class

- 1 Applesauce
- 2 Peaches
- 3 Plums
- 4 Strawberries
- 5 Any Other (specify)

DIVISION 2 - CANNED VEGETABLES

Class

- 1 Asparagus
- 2 Beans, green or waxed
- 3 Corn
- 4 Olives
- 5 Squash (any variety)
- 6 Tomatoes, whole pack
- 7 Any Other (specify)

DIVISION 3 - JAMS

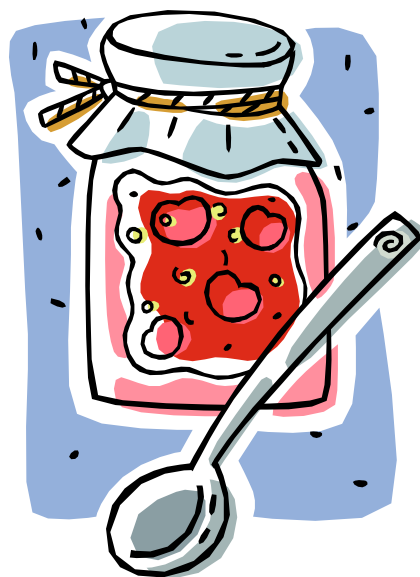
Class

- 1 Apricot
- 2 Peach
- 3 Plum
- 4 Grape
- 5 Strawberry
- 6 Raspberry
- 7 Blackberry
- 8 Any Other Combination
- 9 Any Other (specify)

DIVISION 4 – JELLIES

Class

- 1 Apple
- 2 Berry (any)
- 3 Grape
- 4 Plum
- 5 Pomegranate
- 6 Any Other Combination
- 7 Any Other (specify)



DIVISION 5 - MARMALADES / BUTTER

Class

- 1 Marmalade, Orange
- 2 Marmalade, Any Other (specify)
- 3 Apple Butter
- 4 Apricot Butter
- 5 Butter, Any Other (specify)



DIVISION 6 - PICKLES, SAUCES, RELISHES & DRIED FOOD PRODUCTS

Vegetable Pickles

Class

- 1 Cucumber
- 2 Bread & Butter pickles
- 3 Peppers
- 4 Any Other (specify)
- 5 Vinegar, Any

Relishes

Class

- 6 Any (specify)

Dried Food Products

Class

- 7 Fruit
- 8 Jerky (specify)
- 9 Vegetables
- 10 Herbs

Homemade Salsa

Class

- 11 Salsa – Hot
- 12 Salsa - Mild
- 13 Fruit Salsa
- 14 Any Other (specify)



DIVISION 7 - MISCELLANEOUS

Class

- 1 BBQ Sauce
- 2 Spaghetti Sauce
- 3 Fruit Sauce, Any
- 4 Any Other (specify)

ADULT HOME BREW & WINE

Awards Offered:

- **BEST OF SHOW:** \$50.00
- **RESERVE BEST OF SHOW:** \$25.00
- **BEST OF DIVISION:** Rosette

Premiums Offered: First: \$25.00 Second: \$15.00 Third: \$10.00

Entry Information:

- Entry Fee: \$10.00
- Entry Limit: No Limit
- Entries are to be delivered to the Franklin Hall.
- See Still Exhibit Schedule for receiving of entry, judging and pick-up dates/times.

Rules:

- Eligibility: Open to California residents, ages 21 or older.



WINE DIVISION

Wine Requirements:

- Exhibitor must bring two 750 ml. cork or screw finished bottles. One un labeled bottle to be filled with the wine for competition and one filled with appropriate colored water for display purposes only. Wine bottle with colored water will be used for the wine label competition. Open bottle will be disposed of after judging.
- Wine must be personally produced by the exhibitor. Grapes do not have to be grown by exhibitor.

DIVISION 8 – WHITE WINE

Class

- 1 Chardonnay
- 2 Sauvignon Blanc
- 3 Any Other (specify)

DIVISION 9 – RED WINE

Class

- 1 Cabernet Sauvignon
- 2 Zinfandel
- 3 Any Other (specify)

DIVISION 10 – WINE LABEL

Class

- 1 Wine Label



HOMEBREW DIVISION



Homebrew Requirements:

- Entries for Home Brew shall consist of two (2) 12-ounce bottle. Six-ounce bottles will be accepted for Barley and Meads only.
- Home Brew entries may not be brewed wholly or in part using facilities or equipment of a commercial brewery.
- Bottles must be unlabeled. Bottles with labels will not be accepted. Bottles may be sealed with spring fitted stoppers or crown caps. Any bottles not conforming to the show rules will be eliminated.
- Accurate and legibly written label, including exhibitor's name and address, entry division and class number, must be attached, on bottom of bottles only.

DIVISION 11 – HOMEBREW

Class

- 1 New England Style IPA/Hazy
- 2 Internal Style IPA
- 3 West Coast Style IPA
- 4 Standard American Lager
- 5 International Lager
- 6 International Style Pilsner
- 7 American Style Wheat/Cream
- 8 American Pale Ale
- 9 Porter/Stout/Dark Lager
- 10 Blonde/Golden Ale
- 11 American Amber/Brown
- 12 American Style Fruit Beer
- 13 Mead/Cider
- 14 Any Other (specify)

DIVISION 12 – HOMEBREW LABEL

Class

- 1 Homebrew Label

ADULT BAKING & CONFECTIONS



Awards Offered:

- **BEST OF SHOW:** \$25.00 (One awarded for Overall Baking & Confections)
- **RESERVE BEST OF SHOW:** \$15.00 (One awarded for Overall Baking & Confections)
- **BEST OF DIVISION:** Rosette

Premiums Offered: First: \$5.00 Second: \$4.00 Third: \$2.00

Entry Information:

- Entry Fee: \$1.00
- Entry Limit: No Limit
- Entries are to be delivered to the Franklin Hall.
- See Still Exhibit Schedule for receiving of entry, judging and pick-up dates/times.

Rules:

- Eligibility: Open to California residents, ages 19 or older.
- Entries must have been home prepared by the exhibitor.
- Commercial mixes will be disqualified.
- Entries that spoil during the Fair will be removed.

Amounts:

- Muffins ½ dozen plus 1
- Cookies ½ dozen plus 1
- Cupcakes ½ dozen plus 1
- Cake-pops ½ dozen plus 1
- Cakes 2/3 cake plus 1 slice
- Breads 2/3 loaf plus 1 slice
- Pie One whole pie no larger than 8", plus 1 sample piece
- Biscotti 6 pieces plus 1
- Confections ½ pound plus 1
- Suckers ½ dozen plus 1

Wrapping Instructions:

- Bread - Must be exhibited in a self-sealing bag. No plate or cardboard.
- Biscuits & Rolls - Must be on a paper plate no larger than 6" in size and placed in the smallest self-sealing bag possible.
- Cookies, Confections and Candies must be on a five (5) or six (6) inch paper plate placed in one (1) quart size sealed bag.
- Cakes: Loaf, Pound - Wrap in clear plastic on a cardboard base, base to extend no more than 1" beyond cake.
- Pies - Must be smoothly wrapped in clear plastic.
- Samples for judging must be in small self-sealing bags and securely taped to the outside of the entry.

DIVISION 13 – BREADS

Class

- 1 Banana Bread
- 2 Zucchini Bread
- 3 Pumpkin Bread
- 4 Corn Bread
- 5 Doughnuts
- 6 Gluten Free
- 7 Any Other (specify)



DIVISION 14 – BISCUITS & ROLLS

Class

- 1 Biscuits
- 2 Croissants
- 3 Muffins
- 4 Cinnamon Rolls
- 5 Any Other (specify)

DIVISION 15 – LAYER CAKE-FROSTED

HOW TO EXHIBIT:

- Cake must be two (2) layers
- Filling may be same as frosting or different
- One-minute frostings discouraged

Class

- 1 Cake Roll
- 2 Any Other (specify)

DIVISION 16 - CAKES – NOT FROSTED

Class

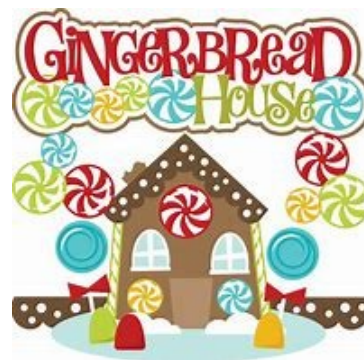
- 1 Coffee Cake
- 2 Carrot Cake
- 3 Sponge Cake
- 4 Gluten Free
- 5 Any Other (specify)

DIVISION 17 – DECORATED FOODS

(Styrofoam or plastic base acceptable)

Class

- 1 Any Holiday
- 2 Gingerbread or Graham Cracker House
- 3 Cupcakes
- 4 Cake-pops
- 5 Wedding Cake
- 6 Happy Birthday Cake
- 7 Cookies
- 8 Any Other (specify)



DIVISION 18 – COOKIES

Class

- 1 Bar (specify)
- 2 Brownies – Frosted
- 3 Brownies - Unfrosted
- 4 Snicker Doodle Cookie
- 5 Peanut Butter Cookie
- 6 Chocolate Chip Cookie
- 7 Oatmeal Cookie
- 8 Gingerbread Cookie
- 9 Gluten Free Cookie
- 10 Any Other Cookie (specify)

DIVISION 19 - CONFECTIONS

Class

- 1 Chocolate Fudge
- 2 Taffy
- 3 Truffles
- 4 Popcorn
- 5 Nut Brittle
- 6 Any Other (specify)

DIVISION 20 - PIES & PASTRIES

(Pies – One crust or Two)

Class

- 1 Apple
- 2 Cherry
- 3 Lemon
- 4 Pumpkin
- 5 Berry
- 6 Cream
- 7 Blueberry
- 8 Rhubarb
- 9 Other Fruit (specify)
- 10 Any Other (specify)



ADULT CLOTHING & TEXTILES



Awards Offered:

- **BEST OF SHOW:** \$25.00 (One awarded overall Clothing & Textiles)
- **RESERVE BEST OF SHOW:** \$15.00 (One awarded overall Clothing & Textiles)
- **BEST OF DIVISION:** Rosette

Premiums Offered: First: \$5.00 Second: \$4.00 Third: \$2.00

Entry Information:

- Entry Fee: \$1.00
- Entry Limit: No Limit
- Entries are to be delivered to the Franklin Hall.
- See Still Exhibit Schedule for receiving of entry, judging and pick-up dates/times.

Rules:

- Eligibility: Open to California residents, ages 19 or older.
- All entries must have been home produced by the exhibitor within one (1) year of June 25, 2026 to be eligible for entry, judging and exhibit.
- Sweater sets, place mat sets, etc. must be pinned together to guard against loss.
- Functional toys and dolls must be child safe.
- Please have your name; address and telephone number sewn in an unobtrusive seam in the garments and on the quilt-hanging strip.
- If you do not find a class for your entry in those listed under the Division where it should be entered, enter the item under Any Other.

DIVISION 21 - KNITTED ARTICLES

Class

- 1 Afghan
- 2 Baby Item
- 3 Shawl or scarf
- 4 Wearable's
- 5 Any Other (specify)

DIVISION 22 - CROCHETED ARTICLES

Class

- 1 Afghans
- 2 Baby Item
- 3 Doily, Runner, Dresser Scarf
- 4 Shawl or scarf
- 5 Hats
- 6 Any other (specify)

DIVISION 23 – HOUSEHOLD TEXTILES

Class

- 1 Crocheted
- 2 Cross-stitched
- 3 Embroidered
- 4 Appliqué
- 5 Any Other (specify)

DIVISION 24 – TOYS AND HOUSEHOLD ITEMS

(Enter dolls only in Crafts and Hobbies section)

Class

- 1 Stuffed Animal
- 2 Any Other (specify)

DIVISION 25 – HOLIDAY TEXTILES

Class

- 1 Ornaments
- 2 Table Decoration
- 3 Any Other (specify)

DIVISION 26 - CHILDREN

Class

- 1 Clothing
- 2 Repurposed Clothing
- 3 Any Other (specify)

DIVISION 27 - ADULT WEAR

Class

- 1 Clothing
- 2 Repurposed Clothing
- 3 Any Other (specify)

DIVISION 28 - ACCESSORIES

Class

- 1 Purses / Bags
- 2 Any Other (specify)



ADULT QUILT SHOW



Awards Offered: Sponsored by Valley Quilt Guild

- **BEST OF SHOW:** \$50.00 (One awarded overall Quilt)
- **RESERVE BEST OF SHOW:** \$15.00 (One awarded overall Quilt)
- **BEST OF DIVISION:** Rosette

Premiums Offered: First: \$15.00 Second: \$10.00 Third: \$5.00

Entry Information:

- Entry Fee: \$2.00
- Entry Limit: No Limit
- Entries are to be delivered to the Franklin Hall.
- See Still Exhibit Schedule for receiving of entry, judging and pick-up dates/times.

Rules:

- Eligibility: Open to California residents, ages 19 or older.
- All entries must have been home produced by the exhibitor within one (1) year of June 25, 2026 to be eligible for entry, judging and exhibit.
- Please have your name; address and telephone number sewn in lower left-hand corner on back of quilt.
- Quilts must have hanging sleeve sewn to the top edge to be eligible for exhibit and competition.
- If you do not find a class for your entry in those listed under the Division where it should be entered, enter the item under Any Other.

DIVISION 29 – QUILT

Class

- 1 Large Quilt
 - Measures 71" or more on the longest side. Hand or machine pieced, and hand quilted by maker.
- 2 Medium Quilt-
 - Measure 48" to 70" on the longest side. Hand or machine pieced, and hand quilted by maker.
- 3 Wall Quilt-
 - Measures less than 48" on the longest side. Hand or machine pieced, and hand quilted by maker.
- 4 Large Quilt-
 - Measures 71" or more on the longest side. Machine pieced and machine quilted by maker.
- 5 Medium Quilt-
 - Measures 48" to 70" on the longest side. Machine pieced and machine quilted by maker.
- 6 Wall Quilt-
 - Measures less than 48" on the longest side. Machine pieced and machine quilted by maker.
- 7 Large Quilt-
 - Measures 71" or more on the longest side. Machine pieced and hand or machine quilted by another.
- 8 Medium Quilt-
 - Measures 48" to 70" on the longest side. Machine pieced and hand or machine quilted by another.
- 9 Wall Quilt-
 - Measures less than 48" on the longest side. Machine pieced and hand or machine quilted by another.
- 10 Large Quilt-
 - Measures 71" or more on the longest side. Group quilt
- 11 Medium Quilt-
 - Measures 48" to 70" on the longest side. Group quilt.
- 12 Wall Quilt-
 - Measures less than 48" on the longest side. Group quilt.
- 13 Quilt – Any Other (specify)
- 14 Applique – Any Size
 - Specialty Techniques, Embellished, Embroidered, 3D, etc.



QUILT BLOCK CONTEST

Awards Offered: Sponsored by Valley Quilt Guild

Premiums Offered:	First: \$30.00	Second: \$25.00	Third: \$20.00
	Fourth: \$15.00	Fifth: \$10.00	Sixth: \$5.00

Entry Information:

- Entry Fee: None
- Entry Limit: No Limit
- Entries are to be delivered to the Franklin Hall. Deliver your quilt block to the Valley Quilt Guild table by 3:30 pm on Saturday, June 27, 2026.
- See Still Exhibit Schedule for receiving of entry and judging.

Rules:

- Eligibility: Open to California residents, ages 19 or older.
- Contest is open to all Yuba and Sutter County residents and Valley Quilt Guild members.
- Exhibitor must complete entry form at time of delivery of the Quilt block.
- The quilt block must measure 12½" x 12½" to be eligible for competition.
- Blocks that do not square up to 12½" will be disqualified.
- Blocks must be made from 100% cotton fabric.
- Use any technique or pattern.
- Do not pre-quilt or back the block.
- Have your name and address applied to the back of the block.
- Quilt blocks will be on display for the remainder of the fair.
- The entries will not be returned.
- Blocks will be used for next year's fair raffle quilt or a community service quilt.
- COLOR THEME: 'Red, White & Blue'

DIVISION 30 - QUILT BLOCK CONTEST

Class

- 1 Quilt Block



ADULT ARTS, CRAFTS & HOBBIES

Awards Offered:

- **BEST OF SHOW:** \$50.00
- **RESERVE BEST OF SHOW:** \$25.00
- **BEST OF DIVISION:** Rosette

Premiums Offered:

First: \$5.00 Second: \$4.00 Third: \$2.00



Entry Information:

- Entry Fee: \$1.00
- Entry Limit: No Limit
- Entries are to be delivered to the Franklin Hall.
- See Still Exhibit Schedule for receiving of entry, judging and pick-up dates/times.

Rules:

- Eligibility: Open to California residents, ages 19 or older.
- All entries must have been home produced by the exhibitor within one (1) year of June 25, 2026 to be eligible for entry, judging and exhibit.
- If you do not find a class for your entry in those listed under the Division where it should be entered, enter the item under Any Other.

DIVISION 31 – CERAMICS

MOLDED (Clay & Fired), Hydrocal (Gypsum Cement, Plaster, Non-Fired)

Class

- 1 Bird or Animal (specify)
- 2 Figurine (specify)
- 3 Plate, Bowl, Planter or Vase
- 4 Kitchen Accessories
- 5 Holiday Items (specify)
- 6 Any Other Ceramic (specify)

DIVISION 32 - WOODWORKING

Class

- 1 Small Furniture
- 2 Decoys
- 3 Birdhouse
- 4 Wooden Signs
- 5 Coat Rack
- 6 Jewelry Box



- 7 Saddle Rack
- 8 Barnwood Projects (specify)
- 9 Wood Pallet Projects (specify)
- 10 Shabby Chic
- 11 Any Other (specify)

DIVISION 33 – METAL WORK

Class

- 1 Metal Artwork
- 2 Metal Wall Art
- 3 Horseshoe Projects
- 4 Rustic Tin Projects
- 5 Wind Chimes
- 6 Any Other (specify)



DIVISION 34 – HOLIDAY CRAFTS

Class

- 1 Valentines Day
- 2 Easter
- 3 4th of July
- 4 Halloween
- 5 Thanksgiving
- 6 Christmas
- 7 Any Other (specify)

DIVISION 35 – MISCELLANEOUS CRAFTS

Class

- 1 Basket (specify type)
- 2 Glass Work (not larger than 36" one side)
- 3 Stepping Stone
- 4 Leatherwork
- 5 Gourds
- 6 Seashell Art
- 7 Stained Glass
- 8 Stamp Art
- 9 Models
- 10 Garden Projects (No Live Plants)
- 11 Taxidermy
- 12 Trash to Treasure (Made with recycled products)
- 13 Painted Rocks
- 14 Homemade Soap
- 15 Terra Cotta Pot Projects
- 16 Tile Mosaics
- 17 Coffee Pods
- 18 Tye Dye Items (specify)
- 19 Any Other (specify)



DIVISION 36- BEADING

Class

- 1 Jewelry
- 2 Purse
- 3 Any Other (specify)

DIVISION 37 - JEWELRY MAKING

Class

- 1 Individual Item
- 2 2 Piece Set
- 3 Any Other (specify)



DIVISION 38 – SCRAPBOOKING

Exhibitors may submit one page or a two-page theme spread in a protective sleeve from a scrapbook for judging and layout, not the whole book. Provide name and address on back of exhibit.

Class

- 1 People
- 2 Holiday
- 3 Sports
- 4 Vacation/Travel
- 5 Any Other (specify)

DIVISION 39 - TOLE PAINTING

Class

- 1 Any (specify)

DIVISION 40 - I FOUND IT ON Pinterest

Any non-perishable item inspired by a Pinterest post. A printout of the original Pinterest post must be included with the entry.

Class

- 1 Small (under 12")
- 2 Medium (12" - 18")
- 3 Large (Over 18")

DIVISION 41 - COLLECTIONS

Class

- 1 Any Collection (specify)

DIVISION 42 – MANDELLA

Class

- 1 Picture
- 2 Any Other (specify)



ADULT FINE ARTS DEPARTMENT



Rules:

- Eligibility: Open to California residents, ages 19 or older.
- Entry Limit: No Limit
- Exhibits must not have been shown previously at the Yuba-Sutter Fair in any category.
- Work must have been completed within (24) twenty-four months of opening date of fair and was not entered in the 2025 Yuba-Sutter Fair.
- Every entry will be hung unless entries exceed hanging space. If this should occur, selection will be unbiased and based on judged results.
- Every exhibitor will have a minimum of three (3) paintings hung.
- Only original artwork will be accepted.
- No water or motor driven features allowed.
- In determining the proper division to enter your painting, use the main subject of the painting.
- Use the medium to determine the correct class number.
- You may only enter in one of following three (3) Classifications:
 1. **PROFESSIONAL:** A person who engages in the activity for monetary profit, i.e. someone who derives income from Fine Arts such as a Paid Instructor (not a volunteer), Teacher or Professor of Fine Arts, or an artist who exhibits his/her work for sale, from which a commission is paid.
 2. **SEMI-PROFESSIONAL:** Open to those whose returns from sales exceed the cost of materials and/or gains of monetary profit to supplement their income.
 3. **NOVICE/AMATEUR:** Open to those who engage in Art as a hobby, whose returns from sales, if any, do not exceed the cost of the materials for the articles sold.
- All entries will be judged but will be displayed at the discretion of Management.
- The Yuba-Sutter Fair reserves the right to reject any work that does not comply with the rules and/or definitions of questionable taste for a family event.
- Paintings of nude figures will not be accepted for judging or display.

- Fair Management shall not be responsible for any accidental loss that may occur to exhibitors or exhibits at any showing. Exhibitors shall hold Management harmless and indemnify it against any legal proceeding arising from such accident or loss.

How to Prepare Painting Exhibits:

1. Paintings and drawings must be framed. Size cannot exceed 48" x 36". This measurement includes the frame.
2. Each painting must be securely wired for hanging. Measure to be sure the screw eyes are evenly spaced so that the wire will be even, and the painting will hang straight.
3. Paintings with painted sides and all staples in the rear are considered framed. The following will disqualify your entry:
 - Metal hanging brackets
 - Paper or glass frame
 - Tape or string from which to hang painting
 - Bracketed frames
 - Copies of original work done by any process.

NOVICE/AMATEUR - ART AND SCULPTURES

Awards Offered:

- **BEST OF SHOW:** \$25.00
- **RESERVE BEST OF SHOW:** \$15.00
- **BEST OF DIVISION:** Rosette

Premiums Offered: First: \$15.00 Second: \$12.00 Third: \$10.00

Entry Information:

- Entry Fee: \$3.00
- Entries are to be delivered to the Franklin Hall.
- See Still Exhibit Schedule for receiving of entry, judging and pick-up dates/times.

DIVISION 101 – NOVICE/AMATEUR ARTS

Paintings & Drawings

Class

- 1 Oil /Acrylic
- 2 Watercolor
- 3 Pen/Pencil/Charcoal/Pastel
- 4 Mixed Media
- 5 Any Other (specify)

DIVISION 102 – NOVICE/AMATEUR SCULPTURES

Class

- 1 Clay/Ceramic (no soft material)
- 2 Any Other (specify)

SEMI-PROFESSIONAL - ART AND SCULPTURES

Awards Offered:

- **BEST OF SHOW:** \$25.00
- **RESERVE BEST OF SHOW:** \$15.00
- **BEST OF DIVISION:** Rosette

Premiums Offered: First: \$15.00 Second: \$12.00 Third: \$10.00

Entry Information:

- Entry Fee: \$3.00
- Entries are to be delivered to the Franklin Hall.
- See Still Exhibit Schedule for receiving of entry, judging and pick-up dates/times.

DIVISION 103 – SEMI-PROFESSIONAL ARTS

Paintings & Drawings

Class

- 1 Oil /Acrylic
- 2 Watercolor
- 3 Pen/Pencil/Charcoal/Pastel
- 4 Mixed Media
- 5 Any Other (specify)

DIVISION 104 – SEMI-PROFESSIONAL SCULPTURES

Class

- 1 Clay/Ceramic (no soft material)
- 2 Any Other (specify)



PROFESSIONAL - ART AND SCULPTURES

Awards Offered:

- **BEST OF SHOW:** \$25.00
- **RESERVE BEST OF SHOW:** \$15.00
- **BEST OF DIVISION:** Rosette

Premiums Offered: First: \$15.00 Second: \$12.00 Third: \$10.00

Entry Information:

- Entry Fee: \$3.00
- Entries are to be delivered to the Franklin Hall.
- See Still Exhibit Schedule for receiving of entry, judging and pick-up dates/times.

DIVISION 105 – PROFESSIONAL ARTS

Paintings & Drawings

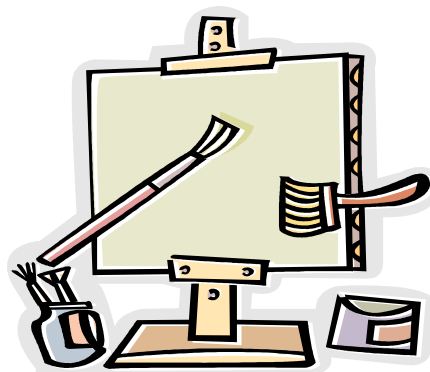
Class

- 1 Oil /Acrylic
- 2 Watercolor
- 3 Pen/Pencil/Charcoal/Pastel
- 4 Mixed Media
- 5 Any Other (specify)

DIVISION 106 – PROFESSIONAL SCULPTURES

Class

- 1 Clay/Ceramic (no soft material)
- 2 Any Other (specify)



WINE & CANVAS



Awards Offered:

- **BEST OF SHOW:** \$25.00
- **RESERVE BEST OF SHOW:** \$15.00
- **BEST OF DIVISION:** Rosette

Premiums Offered: First: \$10.00 Second: \$7.00 Third: \$5.00

Entry Information:

- Entry Fee: \$1.00
- Entries are to be delivered to the Franklin Hall.
- See Still Exhibit Schedule for receiving of entry, judging and pick-up dates/times.

Rules:

- Eligibility: Open to California residents, ages 19 or older.
- Entry Limit: None. Enter as many exhibits as you wish.
- Must have been painted in the last year and not entered in 2025. (June 1, 2025 – June 1, 2026)

DIVISION 109 - WINE AND CANVAS

Class

- 1 Animals
- 2 Floral
- 3 Nature
- 4 Holiday
- 5 Any Other (specify)



SPECIAL CONTESTS OF THE ARTS & CRAFTS DEPARTMENT

Pop Art

Awards Offered:

- **BEST OF SHOW:** \$25.00
- **RESERVE BEST OF SHOW:** \$15.00
- **BEST OF DIVISION:** Rosette



Premiums Offered:

First: \$10.00

Second: \$7.00

Third: \$5.00

Entry Information:

- Entry Fee: \$1.00
- Entry Limit: No Limit
- Danish System of Judging
- Entries are to be delivered to the Franklin Hall.
- See Still Exhibit Schedule for receiving of entry, judging and pick-up dates/times.

Rules:

- Eligibility: Open to California residents, ages 19 or older.
- Create any two-dimensional (e.g. a picture or scene) or three dimensional (a sculpture, figure, car, etc.) art piece out of popcorn
- You may paint popcorn different colors and/or glue small objects (beads, sequins, glitter, etc.) on the popcorn. Showcase your creativity!

DIVISION 110 - POP ART

Class

- 1 Pop Art Displays



Garbage Can Art

Awards Offered:

- **BEST OF SHOW:** \$25.00
- **RESERVE BEST OF SHOW:** \$15.00
- **BEST OF DIVISION:** Rosette

Premiums Offered: First: \$25.00 Second: \$15.00 Third: \$10.00

Entry Information:

- Entry Fee: \$5.00
- Entry Limit: 1 Entry per exhibitor per class. Limited to first the first 10 entries per class.
- Entries are to be delivered to the Franklin Hall.
- Danish System of Judging
- See Still Exhibit Schedule for receiving of entry, judging and pick-up dates/times.

Rules:

- Eligibility: Open to California residents, ages 19 or older.
- 35 or 50 gallon garbage cans may be picked up from the fair grounds for painting. Designs may be funny, agricultural, fair theme or pretty. Use your imagination!
- Entries must have been home prepared by the exhibitor.
- The entries will not be returned they will be used throughout the fairgrounds.
- All entries will be judged but will be displayed at the discretion of Management.

DIVISION 111 - GARBAGE CAN ART

Class

- 1 Garbage Can Art



Photo Cut-Out Props

Awards Offered:

- **BEST OF SHOW:** \$25.00
- **RESERVE BEST OF SHOW:** \$15.00
- **BEST OF DIVISION:** Rosette

Premiums Offered: First: \$25.00 Second: \$15.00 Third: \$10.00

Entry Information:

- Entry Fee: \$5.00
- Entry Limit: 1 Entry per exhibitor per class. Limited to first the first 10 entries per class.
- Entries are to be delivered to the Franklin Hall.
- Danish System of Judging.
- See Still Exhibit Schedule for receiving of entry, judging and pick-up dates/times.

Rules:

- Eligibility: Open to California residents, ages 19 or older.
- Exhibitor may use plywood or cardboard for the photo cutout prop. The Photo Cut-Out Props will remain in the fair's possession after the entry is judged and be used and displayed throughout the fairgrounds.
- Designs may be funny, agricultural, fair theme or pretty. Use your imagination!
- Judging will be 33% originality, 33% workmanship and neatness, 34% overall appeal to fairgoers.
- Entries must have been home prepared by the exhibitor.
- All entries will be judged but will be displayed at the discretion of Management.

DIVISION 113 - PHOTO CUT-OUT PROPS

Class

- 1 Photo-Cut-Out Prop



Barn Quilts

Awards Offered:

- **BEST OF SHOW:** \$25.00
- **RESERVE BEST OF SHOW:** \$15.00
- **BEST OF DIVISION:** Rosette

Premiums Offered: First: \$25.00 Second: \$20.00 Third: \$10.00

Entry Information:

- Entry Fee: \$5.00
- Entry Limit: 1 Entry per exhibitor per class. Limited to first the first 15 entries per class.
- Entries are to be delivered to the Franklin Hall.
- Danish System of Judging.
- See Still Exhibit Schedule for receiving of entry, judging and pick-up dates/times.

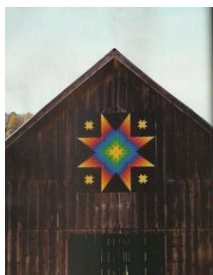
Rules:

- Eligibility: Open to California residents, ages 19 or older.
- Exhibitor must use thin underlayment plywood to paint the barn quilt on.
- The exhibitor has the option to donate the finished barn quilt to the fair for further use.
- The fairgrounds will drill corner holes for hanging purposes. Exhibits will be displayed throughout the fairgrounds during the annual fair.
- Samples are available in the office.
- Designs may be funny, agricultural, fair theme or pretty. Use your imagination!
- Judging will be 33% originality, 33% workmanship and neatness, 34% overall appeal to fairgoers.
- Entries must have been home prepared by the exhibitor.
- All entries will be judged but will be displayed at the discretion of Management.

DIVISION 114 – BARN QUILTS

Class

- 1 2' x 2' Barn Quilt
- 2 4' x 4' Barn Quilt



ADULT PHOTOGRAPHY

Entry Information:

- Entry Fee: \$1.00
- Entry Limit: No Limit
- Entries are to be delivered to the Franklin Hall.
- See Still Exhibit Schedule for receiving of entry, judging and pick-up dates/times.

Rules:

- Eligibility: Open to California residents, ages 19 or older.

Requirements:

- Entry cannot be signed, framed or dated.
- Entry must include the title of each entry.
- Photographs must have been taken after June 1, 2025 and not entered in the 2025 Yuba-Sutter Fair.
- Every entry will be judged and displayed at the discretion of the Fair Management.



How to prepare photographs for exhibit:

- **No entry may be less than 8" X 10" and no more than 36" x 24" including matte frame.**
- **All photographs must be matted.**
- The exhibitor's name, address, title of the photo, division and class must be clearly shown on the back in the UPPER RIGHT CORNER.
- Loose photos will not be accepted. All prints must be mounted on mat boards with Velcro on the back ready for hanging. Attach one piece, of no less than 1" x 1" of Velcro to each corner of the back of the mat board (total 4 pieces of heavy duty velcro) and provide the opposite strip of Velcro to the fair. Fair reserves the right to add more Velcro if needed. Opposite strip of Velcro will not be returned after the fair.
- No name or title shall be shown on the front of the print or matte frame.
- General class definition: Those entries that do not fit into existing classes
- You may only enter in one of following two Classifications:
 1. **PROFESSIONAL:** A person who engages in Photography for monetary profit, i.e. someone who derives income from Photography such as a Paid Instructor (not a volunteer), Teacher or Professor of Photography, or a photographer who exhibits his/her work for sale, from which a commission is paid.
 2. **NOVICE/AMATEUR:** Open to those who engage in Art as a hobby, whose returns from sales, if any, do not exceed the cost of the materials for the articles sold.

Disqualifications:

- Using wood, metal or glass as a mount will disqualify the entry.
- Photographs containing nude figures or inappropriate exposure. Disqualification is at the discretion of Fair Management.

- 17 Technical Effects – Experimental
- 18 Photo Series

- 19 Eyes
- 20 Any Other (specify)

DIVISION 117 – SELFIES

Class

- 1 Selfie – Alone
- 2 Selfie – With Others
- 3 Selfie – On Vacation
- 4 Selfie – Bad Hair Day
- 5 Selfie – Winning

Class

- 6 Selfie – Smiling
- 7 Selfie – At Work
- 8 Selfie – Out to Eat
- 9 Selfie – Drinking Coffee
- 10 Selfie – Any Other (specify)

PROFESSIONAL PHOTOGRAPHY

Awards Offered:

- **BEST OF SHOW:** \$50.00
- **RESERVE BEST OF SHOW:** \$25.00
- **BEST OF DIVISION:** Rosette



Premiums Offered:

First: \$10.00

Second: \$7.00

Third: \$5.00

DIVISION 120 – BLACK & WHITE PHOTOGRAPHY

Class

- 1 Domestic Animals
- 2 Farm Animals
- 3 Wildlife Animals
- 4 Farm Equipment
- 5 Mother Nature
- 6 Landscape
- 7 Seascape
- 8 First Responders
- 9 People - Portraits
- 10 Babies/Children

Class

- 11 Activity or Event
- 12 Flowers
- 13 Architecture
- 14 Sports
- 15 Still Life
- 16 Skies
- 17 Technical Effects – Experimental
- 18 Photo Series
- 19 Eyes
- 20 Any Other (specify)

DIVISION 121 – COLOR PHOTOGRAPHY

Class

- 1 Domestic Animals
- 2 Farm Animals
- 3 Wildlife Animals
- 4 Farm Equipment
- 5 Mother Nature
- 6 Landscape
- 7 Seascape

- 8 First Responders
- 9 People - Portraits
- 10 Babies/Children

Class

- 11 Activity or Event
- 12 Flowers
- 13 Architecture

- 14 Sports
- 15 Still Life
- 16 Skies
- 17 Technical Effects – Experimental

- 18 Photo Series
- 19 Eyes
- 20 Any Other (specify)



ADULT FLORICULTURE DEPARTMENT



POTTED PLANTS

Awards Offered:

- **BEST OF SHOW:** \$50.00 & Rosette
- **RESERVE BEST OF SHOW:** \$25.00 & Rosette
- **BEST OF DIVISION:** Rosette

Premiums Offered: First: \$10.00 Second: \$7.00 Third: \$5.00

Entry Information:

- Entry Fee: \$1.00
- Entry Limit: No Limit
- Entries are to be delivered to the Franklin Hall.
- See Still Exhibit Schedule for receiving of entry, judging and pick-up dates/times.

Rules:

- Eligibility: Open to California residents, ages 19 or older.
- Open to Amateur Floral Designers.
- If a hanging plant, specify on the entry form.
- Each entry must be labeled with Exhibitor's name on bottom of containers.
- Each container may have only one variety unless otherwise specified.
- The exhibitor must have personally cared for plants for the past four months.
- Exhibitors must provide non-leaking drainage saucers for potted plants.
- Exhibitor provides all potting containers unless otherwise specified.
- Potted Plants must be clean and insect/disease free or entries will be disqualified from the show and asked to be removed from the fairgrounds immediately.
- Floriculture staff will water and maintain potted plants and garden exhibits, excluding bonsais, succulents and cactus.
- Exhibitors with plants requiring special care in watering may leave written instructions with Floriculture staff.
- Bonsai exhibitors are responsible for the watering and care of their own Bonsai exhibits.
- If a plant qualifies for a specific class, it must be entered in that class rather than in "Other potted plant display".

DIVISION 151 - POTTED PLANTS

Class

- 1 Aucuba
- 2 African Violets
- 3 Begonia
- 4 Blooming Plant
- 5 Bromeliad
- 6 Cactus – 6" pot size and under
- 7 Cactus - 7" pot size and over
- 8 Cactus - Jade
- 9 Celosia
- 10 Coleus
- 11 Dwarf Plants
- 12 Fern
- 13 Fuchsia

Class

- 14 Geranium
- 15 Ivy
- 16 Orchid
- 17 Pelargonium
- 18 Petunias
- 19 Pothos
- 20 Roses
- 21 Spider Plant
- 22 Topiaries
- 23 Tropicals
- 24 Mixed Plants in same container
- 25 Any Other (specify)

DIVISION 152 – SUCCULENTS POTTED PLANTS

Class

- 1 Aeonium
- 2 Agave
- 3 Aloe
- 4 Ceropegia
- 5 Crassula
- 6 Echeveria
- 7 Euphorbia

Class

- 8 Gasteria
- 9 Kalanchoe
- 10 Sansevieria Trifasciata (Snake Plant)
- 11 Sedum (Burro's Tail)
- 12 Sempervivum
- 13 Stapelia
- 14 Any Other (specify)

DIVISION 153 – PLANTS IN UNUSUAL CONTAINER

Class

- 1 Shoe or Boot
- 2 Surprise Us! (specify)

DIVISION 154 – DISH GARDEN

Class

- 1 Fairy Garden
- 2 Succulent Dish Garden
- 3 Any Other (specify)



FLORAL ARRANGEMENTS

Awards Offered:

- **BEST OF DIVISION:** Rosette

Premiums Offered: First: \$20.00 Second: \$15.00 Third: \$10.00

Entry Information:

- Entry Fee: \$1.00
- Entry Limit: No Limit
- Entries are to be delivered to the Franklin Hall.
- See Still Exhibit Schedule for receiving of entry, judging and pick-up dates/times.

Rules:

- Eligibility: Open to California residents, ages 19 or older.
- The Franklin Hall will be open at 10 am daily. Arrangements are to be completed and in place by 11am. Judging to be completed 11:15 am each day.
- Use of accessories, to scale (figurines, shells, etc.) is limited to a max of 10% of the total arrangement.
- The exhibitor will furnish his/her own container. Please check to see that the container holds water and has no leaks. If your container does not hold water, it will be removed from the flower show.
- Exhibitors are to use primarily fresh plant material but may include up to 10% dried material
- Exhibitors may not use: artificial fruits, artificial vegetables, or artificial flowers.
- Exhibitors are to place arrangements in the designated area the way the exhibitor wants the judge to view the arrangement. Arrangements MAY NOT BE MOVED until after judging.
- You may only enter in one of following two Classifications:
 1. **NOVICE:** Open to amateurs who have not entered more than four judged competitions.
 2. **INTERMEDIATE:** Open to amateurs who have entered between five and ten previous judged competitions.

AMATEUR FLORAL ARRANGEMENTS

DIVISION 155 – THURSDAY - Arrangements can be constructed off site.

Class

- | | | |
|---|--------------|-----------------------------|
| 1 | Novice | Fair Theme: Barn in the USA |
| 2 | Intermediate | Fair Theme: Barn in the USA |

DIVISION 157 – FRIDAY – Arrangements can be made off site.

Class

- | | | |
|---|--------------|--------------------------|
| 1 | Novice | Theme: Strawberry Fields |
| 2 | Intermediate | Theme: Bon Voyage |

DIVISION 159 – SATURDAY – Arrangements can be made off site.

Class

- 1 Novice Theme: A Little Bit Country
- 2 Intermediate Theme: Jewel Box

DIVISION 161 – SUNDAY – Arrangements can be made off site.

Class

- 1 Novice Theme: Dance with Me
- 2 Intermediate Theme: Patchwork Quilt

CUT FLOWER SHOW

Awards Offered:

- **BEST OF DIVISION:** Rosette

Premiums Offered: First: \$10.00 Second: \$7.00 Third: \$5.00



Entry Information:

- Entry Fee: \$1.00
- Entry Limit: No Entry Limit
- Entries are to be delivered to the Flower House Building.
- See Still Exhibit Schedule for receiving of entry, judging and pick-up dates/times.

Rules:

- Eligibility: Open to California residents, ages 19 or older.
- The Franklin Hall will be open at 10 am daily. Arrangements are to be completed and in place by 11 am. Judging to be completed 11:15 am each day.
- Cut Flowers will be placed in containers supplied by the Fair.
- Enter the exact number of stems or blooms specified for in each class. Inaccurate count will be disqualified.
- A bloom must be at least ¼ open (a bud is not a bloom).
- Management reserves the right to dispose of cut flowers that wilt.
- DO NOT pull petals off of any entry.
- Cut flowers will remain on display for the duration of the Fair.
- No cut flower entry may be used for competition in any other division. Cut flower entries may not come from any other Division on the Floricultural Department.

DIVISION 163 - THURSDAY- (ANY COLOR)

Class

- 1 Dahlias- (one stem)
- 2 Rose - (bloom(s) on one stem)
- 3 Delphinium - (three stems)
- 4 Hybiscus – (three stems)

DIVISION 164 - FRIDAY- (ANY COLOR)

Class

- 1 Tea Roses (one stem)
- 2 Hydrangea (one stem)
- 3 Clematis (three stems)
- 4 Cone Flower (one stem)

DIVISION 165 - SATURDAY- (ANY COLOR)

Class

- 1 Sunflower (one stem)
- 2 Asters (three stems)
- 3 Peony (one stem)
- 4 Gladiola (one stem)

DIVISION 166 - SUNDAY- (ANY COLOR)

Class

- 1 Daisy, Any (three stems)
- 2 Geranium (three stems)
- 3 Lily (one stem)
- 4 Larkspur (one stem)



SPECIAL CONTESTS OF THE FLORICULTURE DEPARTMENT



FLOWER GARDEN COMPETITION

Awards Offered:

- **BEST OF SHOW:** Rosette
- **RESERVE BEST OF SHOW:** Rosette

Premiums Offered: First: \$300.00 Second: \$200.00 Third: \$100.00 Fourth: \$50.00

Entry Information:

- Entry Fee: \$15.00
- Entry Limit: Limited to the **first 5 entries**
- Danish System of Judging
- See Still Exhibit Schedule for receiving of entry, judging and pick-up dates/times.

Rules:

- Eligibility: Open to all California Residents, ages 19 or older, organizations, churches, lodges, clubs, etc.
- Each exhibit will receive a 10' x 10' spot.
- Construction of backdrops, etc. should be done ahead of time.
- All walks and/or paths with open access to the public must be roped off. You may want to incorporate a barrier into your design to surround the whole garden.
- No dyed, artificial or painted flowers. Materials used must be in their natural living form.
- Setup will be Sunday, June 21st thru Wednesday, June 24th, 10 am – 6 pm and must be completed and in place by Thursday, June 25th at 10 am.

- The following are not permitted in flower shows: natural bird nests, "stuffed birds", insects, live fish, birds or other animals.
- Any accessories must be secured and shall remain in the garden for the duration of the Fair.
- Do not use articles of value.
- You may post a sign with the name of the competing individual, group or organization on the exhibit after judging.
- All garden square footage must meet the following requirements:
 - ◆ A minimum of 40% flowers.
 - ◆ 30% of other living plant material.
 - ◆ 30% for other materials, pathways, ponds, rocks, patios.
 - ◆ Refurbishing and watering during the Fair shall take place from 10 am to 12 Noon.
 - ◆ Exhibitors should strive to promote the theme.
 - ◆ If you use any display material that shows a label, the label must be a Yuba, Sutter, Colusa or Butte County product.

DIVISION 167 – FLOWER GARDEN COMPETITION

Class

- 1 Flower Garden Competition

FLOWERING WINE BARREL COMPETITION

Awards Offered:

- **BEST OF SHOW:** Rosette
- **RESERVE BEST OF SHOW:** Rosette

Premiums Offered: First: \$50.00 Second: \$40.00
 Third: \$30.00 Fourth: \$15.00

Entry Information:

- Entry Fee: \$7.00
- Entry Limit: Limited to the **first 5 entries**
- Danish System of Judging
- See Still Exhibit Schedule for receiving of entry, judging and pick-up dates/times.



Rules:

- Eligibility: Open to all California Residents, ages 19 or older, organizations, churches, lodges, clubs, etc.
- Fair will provide an empty wine barrel. Please do not move barrels from where they are placed. Please leave wine barrels free of dirt, plants, etc. when dismantling your exhibit on Monday, June 29, 2026.
- Season to taste with flowers, color foliage and other plants.
- Do not use articles of value.
- No dyed, artificial or painted flowers.
- The following are not permitted in flower shows: natural bird nests, "stuffed birds", insects, live fish, birds or other animals.

- Any accessories must be secured and shall remain for the duration of the fair.
- Setup will be Sunday, June 21st thru Wednesday, June 24th, 10 am – 6 pm and must be completed and in place by Thursday, June 25th at 10 am.
- All Wine Barrels must meet the following requirements:
 - ◆ A minimum of 50% color
 - ◆ 40% of other living plant material
 - ◆ 10% for other materials and accessories
 - ◆ Refurbishing and watering during the Fair shall take place between 10 am and 12 Noon.
 - ◆ If you use any display material that shows a label, the label must be a Yuba, Sutter, Colusa or Butte County product.

DIVISION 168 – WINE BARREL COMPETITION

Class

- 1 Flowering Wine Barrel Competition

FLOWERING WHEEL BARREL/WAGON COMPETITION

Awards Offered:

- **BEST OF SHOW:** Rosette
- **RESERVE BEST OF SHOW:** Rosette

Premiums Offered: First: \$50.00 Second: \$40.00 Third: \$30.00
Fourth: \$15.00



Entry Information:

- Entry Fee: \$7.00
- Entry Limit: No Limit
- Danish System of Judging
- See Still Exhibit Schedule for receiving of entry, judging and pick-up dates/times.

Rules:

- Eligibility: Open to all California Residents, ages 19 or older, organizations, churches, lodges, clubs, etc.
- You provide the wheel barrel, new or old.
- Season to taste with flowers, color foliage and other plants.
- Do not use articles of value.
- No dyed, artificial or painted flowers.
- The following are not permitted in flower shows: natural bird nests, "stuffed birds", insects, live fish, birds or other animals.
- Any accessories must be secured and shall remain for the duration of the fair.
- Setup will start Sunday, June 21st thru Wednesday, June 24th, 10 am – 6 pm and must be completed and in place by Thursday, June 25th at 10 am.
- All Wheel Barrels must meet the following requirements:
 - ◆ A minimum of 50% color
 - ◆ 40% of other living plant material

- ◆ 10% for other materials and accessories
- ◆ Refurbishing and watering during the Fair shall take place between 10 am and 12 Noon.
- ◆ If you use any display material that shows a label, the label must be a Yuba, Sutter, Colusa or Butte County product.

DIVISION 169 – WHEEL BARREL/WAGON COMPETITION

Class

- 1 Flowering Wheel Barrel Competition
- 2 Flowering Wagon Competition



ADULT AGRICULTURE / HORTICULTURE DEPARTMENT

Yuba-Sutter Area's Agricultural Industry!

Did you know that the top ten (10) commodities of Yuba and Sutter counties are: Rice, Walnuts, Peaches, Prunes, Tomatoes, Cattle/calves, Almonds, Wheat, Beans, & Nursery products?

We indeed remain an agricultural area. Our commerce is tied to the seasons of preparing, planting, growing, harvesting and shipping of agricultural products.

Awards Offered:

- **BEST OF SHOW:** \$25 & Rosette
- **RESERVE BEST OF SHOW:** \$15 & Rosette
- **BEST OF DIVISION:** Rosette

Premiums Offered: First: \$12.00 Second: \$8.00 Third: \$5.00



Entry Information:

- Entry Fee: \$1.00
- Entry Limit: No Limit
- Entries are to be delivered to the Franklin Hall.
- See Still Exhibit Schedule for receiving of entry, judging and pick-up dates/times.

Rules:

- **Eligibility:** Open to California residents, ages 19 or older.
- The quality desired in agricultural and horticultural exhibits is the same quality that brings the best financial return in the commercial market. Such exhibits must be at least equal in maturity to that state of ripeness required by Section 42513 of the California Agricultural Code in order to be considered for premium awards.
- Items may not be entered in "Any Other" classes if there is a class offered for that item.
- **Mature** means having reached that stage of ripeness which will insure the completion of the ripening process to a degree which will insure palatability after the removal of the product from the tree, plant or vine.
- **Overripe** means having an advanced state of maturity, which causes the product to be undesirable for human consumption in a fresh state

Requirements:

- The exhibitor must have grown products entered in these divisions.
- The Fair will not be responsible for the return of exhibits in this department.
- It is the exhibitor's responsibility to provide replacement perishable produce in the quantity entered.
- Spoiled fruits and vegetables will be removed from the exhibit.
- Number of required products to be delivered with entry follows the class name.

VEGETABLES AND DECIDUOUS FRUITS



DIVISION 170 – FRUIT & POD VEGETABLES

Class	Class
1 Beans, Any (specify) (12 Pods)	6 Tomatoes, Heirloom (3)
2 Peas, Any (specify) (12 Pods)	7 Tomatoes, Any Other (specify) (3)
3 Peppers, Bell (4)	8 Sunflower (1)
4 Peppers, Any Other (specify) (5)	9 Egg Plant (1)
5 Tomatoes, Cherry (3)	10 Any Other (specify) (5)

DIVISION 171 – ROOT, BULB & TUBER VEGETABLES

Class	Class
1 Beets, Any (specify) (5)	6 Potatoes, White (3)
2 Carrots, Any (specify) (5)	7 Potatoes, Red (3)
3 Garlic, Any (specify) (5)	8 Radishes, Any (specify) (5)
4 Onions, White (3)	9 Turnips, (3)
5 Onions, Red/Yellow (3)	10 Any Other (specify) (5)

DIVISION 172 – LEAFY & STEM VEGETABLES

Class	Class
1 Broccoli (1 bunch)	6 Green Onions (1 bunch)
2 Cabbage (1 head)	7 Lettuce (2 plants)
3 Cauliflower (1 bunch)	8 Rhubarb (6 stalks)
4 Corn, Sweet (3) Leave husks on	9 Spinach (1 bunch)
5 Corn, Other (3) Leave husks on	10 Any Other

DIVISION 173 – FRESH HERBS

Class	Class
1 Chives	4 Parsley - Specify Variety
2 Mint - Specify Variety	5 Rosemary
3 Oregano	6 Lavender
	7 Any Other (specify)

DIVISION 174 – VINE CROPS

Class

- 1 Melon (1)
- 2 Cucumbers, Slicing (3)
- 3 Cucumbers, Pickling (3)
- 4 Watermelons (1)
- 5 Squash, Zucchini (2)

Class

- 6 Squash, Crook Neck (1)
- 7 Squash, Acorn (1)
- 8 Squash, Scallop (1)
- 9 Squash, Any other (specify) (1)
- 10 Gourds, Ornamental (3)

DIVISION 175 – DECIDUOUS FRUITS

Class

- 1 Peaches, Cling (3)
- 2 Peaches, Freestone (3)
- 3 Apricots (3)
- 4 Nectarines (3)

Class

- 5 Pears (3)
- 6 Plums (3)
- 7 Apples (3)
- 8 Any Other (specify) (3)

DIVISION 176 – NOVELTY PRODUCE

Entries do NOT have to be grown by exhibitor, but PLEASE get permission from owner to exhibit.

Class

- 1 Any Vegetable or Fruit – Largest Size
- 2 Any Vegetable or Fruit – Tallest
- 3 Any Vegetable or Fruit – Most Unusual by Shape

DIVISION 177 – PRODUCE ART

Entries do NOT have to be grown by exhibitor, but PLEASE get permission from owner to exhibit. May use all fruits, nuts, vegetables, grains, and/ seeds.

Class

- 1 Decorated Single Potato
- 2 Decorated Group of Potatoes
- 3 Gift Basket at least 75% homegrown
- 4 Vegetable, Fruit and/or Grain Arrangement

Class

- 5 Scarecrow
- 6 Birdhouse
- 7 Decorated Straw Bale
- 8 Other (specify)



NUTS



DIVISION 178 – NUTS – IN SHELL

In shell Nuts - Minimum of one (1) pound. It is permitted to use last year's crop.

Class

- 1 Almonds, Any Variety (specify)
- 2 Walnuts, Any Variety (specify)
- 3 Any Other Type of Nut (specify)

DIVISION 179 – NUTS – SHELLED NUTS

Shell Nuts - Minimum of on half (1/2) pound.

Class

- 1 Almonds, Any Variety (specify)
- 2 Walnuts, Any Variety (specify)
- 3 Any Other Type of Nut (specify)

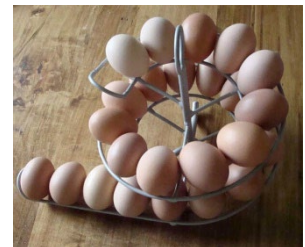
EGGS

DIVISION 180 – EGGS

Regular (1/2 Dozen in Carton) Display container will be provided.

Class

- 1 White
- 2 Brown
- 3 Blue
- 4 Green
- 5 Any Other Color (specify)



DIVISION 181 – SPECIAL DISPLAY EGGS

(Six or More Eggs in a creative display) Eggs MUST be secure within the display. All Colors (natural colors mixed OK)

Class

- 1 Creative Display Eggs