

JUNIOR LIVESTOCK  
2026 COMPETITION GUIDE

YUBA-SUTTER  
**FAIR**

June 25-28  
2026



★★★ **BARN** IN THE **USA** ■■■

 GO ONLINE FOR FULL SCHEDULE AND DETAILS: [WWW.YSFAIR.COM](http://WWW.YSFAIR.COM) 

# JUNIOR LIVESTOCK

## 2026 COMPETITION GUIDE

### Showcasing our area's youth!

For more than 160 years the Yuba-Sutter Fair has been showcasing the talents and achievements of our local youth in the Yuba-Sutter area. The friendly competitions are designed to inspire our youth and highlight their achievements!

Entering the Yuba-Sutter Fair Jr. Livestock Competitive Exhibits Program allows you the opportunity to showcase what you have learned through your youth organization and your livestock projects. It allows you the ability to see how your project measures up to some of the best in our local area; to learn how to accept victory and defeat in a professional and positive manner and to showcase the hard work and efforts that you have put forth in preparation of showing your project!

More than 50,000 visitors are expected to visit the Yuba-Sutter Fair this year. Your work is an integral part of the fair's celebration, and we look forward to placing your talent on display at the Yuba-Sutter Fair from June 25 – 28, 2026.

We encourage you to enter today and begin making lasting memories for yourself, and for the thousands of our Fair patrons!

Good luck to all exhibitors!

Sincerely,

*Dave Dillabo*

**Dave Dillabo**

Chief Executive Officer

#### **13<sup>th</sup> District Agricultural Association Board of Directors**

Board Chair – Kulwant Johl  
Karm Bains  
Erin Cucchi  
Jill LeVake  
Jennifer Matteoli  
Alice Munger  
Joe Serger  
Andrew Stresser

#### **13<sup>th</sup> District Agricultural Association Staff**

Chief Executive Officer  
Dave Dillabo

Entry Representative  
Sherrie Skaggs

Office Staff  
Rayna Barden

Maintenance Staff  
Todd Peters

# Table of Contents

<b>Important Information to Know</b> .....	
What's New in 2026? .....	4
Entry Dates & Deadlines .....	7
<b>Daily Schedule</b> .....	
Junior Livestock Schedule.....	8
<b>Fair Admissions, Vehicle Parking, RV Trailer Parking</b> .....	
Admission, Carnival & Parking Information .....	14
Credentials Order Form .....	16
Exhibitor RV Trailer Camping .....	17
<b>Local Livestock Rules</b> .....	
General.....	19
Violations .....	19
Exhibitor & Parent Conduct.....	20
Eligibility Requirements .....	21
Ownership & Entry Requirements.....	23
Animal Identification .....	24
Ethical Presentation & Treatment of Livestock.....	24
Animal Health & Medications.....	24
Fitting & Showing .....	25
Weigh ins.....	25
Barn Hours, Stalling, Pens and Tie Outs.....	26
Public Safety.....	26
Show Schedule, Arrival and Departure.....	27
Jr. Livestock Auction.....	27
<b>Junior Beef Show Divisions</b> .....	30
Market Beef .....	31
Bred Replacement Heifer Show .....	33
Breeding Beef .....	35
Beef Showmanship.....	37
<b>Junior Swine Show Divisions</b> .....	38
Market Swine .....	39
Breeding Swine.....	40
Swine Showmanship .....	41
<b>Junior Sheep Show Divisions</b> .....	42
Market Lambs .....	43
Breeding Sheep .....	44
Sheep Showmanship.....	46

# Table of Contents

<b>Junior Meat Goat Show Divisions</b> .....	47
Market Goats.....	48
Breeding Meat Goats .....	49
Meat Goat Showmanship .....	51
<b>Junior Dairy Goat Show Divisions</b> .....	
Dairy Goat Showmanship.....	52
Dairy Goat Show.....	53
<b>Junior Pygmy Goat Show Divisions</b> .....	
Pygmy Goat Showmanship .....	55
Pygmy Goat Show .....	56
<b>Junior Rabbit Show Divisions</b> .....	58
Market Rabbit Meat Pens .....	59
Breeding Rabbits.....	60
Rabbit Showmanship .....	61
<b>Junior Chicken Show Divisions</b> .....	62
Market Poultry Meat Pens.....	63
Breeding Poultry Show .....	64
Poultry Showmanship .....	65
<b>Junior Turkey Show Divisions</b> .....	66
Market Turkeys .....	67
Turkey Showmanship .....	68
<b>Junior Dog Show Divisions</b> .....	
Dog Obedience .....	69
Dog Showmanship .....	71
<b>Horse Show</b> .....	72
Release & Waiver of Liability Agreement.....	75
Horse Lease.....	76
<b>Master Showmanship</b> .....	77
<b>Club &amp; Chapter Clean Barn Competition</b> .....	78
<b>Fun Activities</b> .....	
Pee Wee Showmanship .....	79
<b>Exhibitor Responsibility Form</b> .....	80

# What's New in 2026

Please see below for some of the new updates for the 2026 Junior Livestock Program. The significant updates are listed below as a quick point of information for planning purposes.

## ✓ **WEIGHT SIFTED ANIMALS:**

- Market animals that are disqualified due to not meeting the weight qualifications **ARE** eligible to be shown in showmanship. **If this animal is the only animal the exhibitor brought to fair**, the animal will be released upon the regular release date and time of that species. If the exhibitor elects to not show the animal in showmanship, the animal must be removed from the fairgrounds immediately following the weigh-in.

## ✓ **MARKET TURKEY WEIGH-INS & HEALTH CHECK**

- The official weigh-in of all Turkey Meat Pens will take place immediately following the health inspection at Gate 16 on Monday, June 22<sup>nd</sup> from 8 am to 10 am.

## ✓ **CHICKEN MEAT PEN WEIGH-IN & HEALTH CHECK & BREEDING POULTRY HEALTH CHECK**

- The official weigh-in of the Poultry Meat Pens will take place immediately following the health inspections at Gate 16 on Monday, June 22<sup>nd</sup> from 10 am to 11 am.

## ✓ **RABBIT MEAT PEN WEIGH-INS & BREEDING RABBIT HEALTH CHECK**

- The official weigh-in of all Rabbit Meat Pens will take place immediately following the health inspections at Gate 16 on Monday, June 22<sup>nd</sup> from 11 am to 12 Noon.

## ✓ **TURKEY WEIGHT LIMITS**

- Fair-time Minimum/Maximum Weight Requirements: 20 lbs. to 30 lbs. – Turkeys under 20 lbs. and over 30 lbs. will be disqualified

## ✓ **PYGMY GOAT SHOW SCHEDULE**

- Pygmy Goat Show will be a **NON SANCTIONED PYGMY GOAT** Show. Therefore, Primary Members will only be able to show in **PRIMARY PYGMY GOAT SHOWMANSHIP**.
- The Pygmy Goat Show will take place on Sunday, June 21<sup>st</sup> starting at 2 pm.
- Pygmy Goats can start arriving at Noon. Must be onsite and checked-in by 2 pm.
- All Pygmy Goats must be removed from the fairgrounds following the conclusion of the Pygmy Goat show.

## ✓ **DAIRY GOAT SHOW**

- We have added a Dairy Goat Show it will take place on Sunday, June 21<sup>st</sup> starting at 2 pm.
- Dairy Goats can start arriving at Noon. Must be onsite and checked in by 2 pm.
- All Dairy Goats must be removed from the fairgrounds following the conclusion of the Dairy Goat show.

## ✓ **SMALL ANIMAL SHOWS LOCATION**

- The small animal shows will all be shown in main show pavilion. Please come prepared with mobile cages to transport the animals to the show pavilion on show day.

## ✓ **POP-UP TENTS**

- Pop-up tent spaces for goat & sheep exhibitors will be pre-assigned. No side walls on the pop-up tent will be permitted.

## ✓ **INDEPENDENT EXHIBITORS**

- Independent Exhibitors must purchase insurance through the fair to cover them while at fair showing their animal.
- Independent Exhibitors must check in at the Livestock Office twice per day, once in the

morning and once in the afternoon.

- Complete twenty-five (25) hours of Community Service at the Yuba-Sutter Fairgrounds within the calendar year **prior to their entry deadline for their species**. Provide proof of community service in your record book. Contact the fair office for available workdays and work needs.

✓ **ENTRY PICTURES OF MARKET ANIMALS**

- Pictures of Market Beef, Replacement Heifers, Market Hogs, Market Lambs and Market Goats must be submitted by the entry deadline with eartag in ear, either online or emailed to the Fair Administration Office. If not received entry is incomplete and will not be accepted.

✓ **ARCHERY COMPETITION**

- Archery will take place on Saturday, June 20<sup>th</sup>, 2 pm at the Main Exhibit Building Lawn Area.

✓ **MARKET LAMBS AND MARKET GOATS TO LOAD OUT PEN**

- Market Lambs and Market Goats must be moved to the Load Out Pen on Sunday, June 28, 2026, from 1 pm – 2 pm.

✓ **4-H HORSE SHOW**

- 4-H Horse Show will be held on May 16, 2026 at 9 am at the Yuba County Sheriff Posse Arena, Browns Valley. For more information please check the 4-H Horse Show Section of the Guidebook.

✓ **BACKUP ANIMAL ENTRY FEE**

- Backup Animal entry fee has been reduced to \$25.00 per animal entry. All family members using an animal as a family backup must enter the animal and upload pictures.

# Key Dates to Remember

## 2026 Deadlines & Entry Dates

<b>November 3</b>	<b>INDEPENDENT EXHIBITOR DEADLINE</b> Deadline to Register as an Independent Exhibitor
<b>January 1</b>	<b>ONLINE ENTRY REGISTRATION AVAILABLE</b>
<b>February 13</b>	<b>RV SPACES - INSIDE RV &amp; DRY CAMP RV SPACE FEE PAYMENT DEADLINE</b>
<b>February 22</b>	<b>ENTRY DEADLINE FOR ALL MARKET BEEF &amp; HORSE LEASE AGREEMENTS</b> Entries are due for all Market Beef and Horse Lease Agreements
<b>March 2</b>	<b>ANY AVAILABLE DRY LOT RV SPACES WILL BE AVAILABLE FOR PURCHASE</b>
<b>April 24</b>	<b>ENTRY DEADLINE FOR ALL MARKET LAMBS, SWINE &amp; GOATS</b> Online Entries are due for all Market Lambs, Market Swine, Market Goats
<b>May 1</b>	<b>ENTRY DEADLINE FOR ALL SMALL ANIMAL MARKET ENTRIES - RABBIT MEAT PENS, CHICKEN MEAT PENS &amp; TURKEYS</b> Online Entries are due for all Small Animal entries.
<b>May 1</b>	<b>ENTRY DEADLINE FOR ALL BREEDING ANIMALS, SHOWMANSHIP, HORSE SHOW, DOG SHOW</b> Online Entries are due for all Breeding Animals & Showmanship
<b>May 1</b>	<b>QUALITY ASSURANCE DEADLINE (VALID FOR 3 YEARS)</b> Deadline to submit proof of course completion to the fair office by 5 pm
<b>May 1</b>	<b>PURCHASE OF CREDENTIALS DEADLINE</b> Deadline to purchase Discounted Gate & Parking Credentials & Exhibitor Carnival Passes online.
<b>May 31</b>	<b>ENTRY DEADLINE FOR ALL STILL EXHIBITS &amp; VOCATIONAL PROJECTS</b> Online Entries are due for all Vocational Projects and Still Exhibits.

# 2026 Livestock Schedule

(SUBJECT TO CHANGE)

## Saturday, May 16<sup>th</sup>

9 am 4-H Horse Show, Yuba County Sheriff Posse Arena, Browns Valley

## Wednesday, June 17<sup>th</sup> thru Friday June 19<sup>th</sup>

8 am – 5 pm Barns available for delivery and setup of Exhibit Displays.

## Saturday, June 20<sup>th</sup>

9 am - 2 pm RV Trailers arrive per notified schedule

2 pm **4-H Archery Competition** – Main Exhibit Building Lawn Area

3 pm - 8 pm Barns available for delivery and setup of Exhibit Displays & Tack. All RV's must be in place before we will allow barn setup

## Sunday, June 21<sup>st</sup>

8 am - 8 pm Barns available for delivery and setup of Exhibit Displays & Tack.

8 am – 1 pm Barns available for Swine.  
Official Weigh-in & Health Check of Swine will occur upon unloading the animal. Clubs & Chapters will be scheduled within allotted time periods for delivery of animals.

8 am **Jr. Dog Show** – Picnic Area & Flower Building Lawn Area

12 pm – 2 pm Arrival of Pygmy Goats & Dairy Goats

2 pm **Pygmy Goat Show** (South End - Show Pavilion Arena)  
Shown in order of:  
Primary Pygmy Goat Showmanship followed by,  
4-H Pygmy Goat Showmanship followed by,  
FFA Pygmy Goat Showmanship followed by,  
Pygmy Goat Breeding Show

2 pm **Dairy Goat Show** (North End – Show Pavillion Arena)  
Shown in order of:  
4-H Dairy Goat Showmanship followed by,  
FFA Dairy Goat Showmanship followed by,  
Dairy Goat Breeding Show

7 pm – 8 pm Barns available for arrival of Sheep, Beef & Goats.

10 pm Barns Closed

# 2026 Livestock Schedule

## Monday, June 22<sup>nd</sup>

- 5 am - 2 pm      Barns available for arrival of Sheep, Beef & Goats.
- 7 am – 7 pm      Livestock Office Open  
Pre-purchased Admission & Parking Credentials available at Livestock Office. All Gate & Parking Credentials will be required starting Wednesday at 5 am.
- 8 am – 10 am      **Arrival of Turkeys – Official Health Check & Weigh-in**  
Health Inspection and official weigh-in of all turkeys will take place at Gate 16 in the North Parking Lot. Enter thru Gate 12 on C Street. Proceed to drive to Gate 15 for the Health Inspection and weigh-in. Upon completion, you will be admitted to drive into the fairgrounds to the Turkey Barn for drop off.
- 10 am – 11 am      **Arrival of Chickens – Official Health Check & Weigh-in**  
Health Inspection and official weigh-in of all chickens will take place at Gate 16 in the North Parking Lot. Enter thru Gate 12 on C Street. Proceed to drive to Gate 15 for the Health Inspection and weigh-in. Upon completion, you will be admitted to drive into the fairgrounds to the Small Animal Chicken Barn for drop off.
- 11 am – 12 Noon      **Arrival of Rabbits - Official Health Check & Weigh-in**  
Health Inspection and official weigh-in of all rabbits will take place at Gate 16 in the North Parking Lot. Enter thru Gate 12 on C Street. Proceed to drive to Gate 16 for the Health Inspection and weigh-in. Upon completion, you will be admitted to drive into the fairgrounds to the Small Animal Rabbit Barn for drop off.
- 2 pm      **ARRIVAL DEADLINE for Livestock. All livestock must be in place.**
- 3 pm – 5 pm      **Official Weigh-in, Classification & Health Check of Sheep Entries.**  
All Wether Sire & Dam entries must be weighed in and will take place at the conclusion of the market lamb weigh-in. All breeding sheep will be health checked at the scale staging area. Weigh-ins will take place at the scales in the Sheep Barn. Weigh-in order will be in alphabetical order of all the Clubs & Chapters combined.  
*Weigh-in Order: Barry 4-H, Bear River Wheatland FFA, Browns Valley 4-H, East Nicolaus FFA, Franklin 4-H, Hallwood 4-H, Lindhurst FFA, Live Oak 4-H, Live Oak FFA, Marysville FFA, Pleasant Grove 4-H, Sutter Buttes 4-H, Sutter FFA, River Valley FFA, Wheatland 4-H, Wheatland FFA, Yuba City FFA, Independent & Grange Exhibitors*
- 3 pm – 5 pm      **Official Weigh-in, Classification & Health Check of Beef Entries.**  
All breeding cattle entries must be health checked at the scale staging area during the same allotted time period as the market beef animals. All Replacement Heifer entries must be health checked and weighed in during this time period. Weigh-in order will be in alphabetical order of all the Clubs & Chapters combined.  
*Weigh-in Order: Barry 4-H, Bear River Wheatland FFA, Browns Valley 4-H, East Nicolaus FFA, Franklin 4-H, Hallwood 4-H, Lindhurst FFA, Live Oak 4-H, Live Oak FFA, Marysville FFA, Pleasant Grove 4-H, Sutter Buttes 4-H, Sutter FFA, River Valley FFA, Wheatland 4-H, Wheatland FFA, Yuba City FFA, Independent & Grange Exhibitors*
- 5 pm – 6 pm      **Official Weigh-in, Classification & Health Check of Goat Entries.**  
Will immediately follow the conclusion of the Sheep Weigh-in. All breeding goat and pygmy goat entries will be health checked at the scale staging area during the same allotted time period as the market meat goat animals. Weigh-ins will take place at the scales in the Sheep Barn. Weigh-in order will be in alphabetical order of all the Clubs & Chapters combined.  
*Weigh-in Order: Barry 4-H, Bear River Wheatland FFA, Browns Valley 4-H, East Nicolaus FFA, Franklin 4-H, Hallwood 4-H, Lindhurst FFA, Live Oak 4-H, Live Oak FFA, Marysville FFA, Pleasant Grove 4-H, Sutter Buttes 4-H, Sutter FFA, River Valley FFA, Wheatland 4-H, Wheatland FFA, Yuba City FFA, Independent & Grange Exhibitors*
- 10 pm      **Barns Closed**

# 2026 Livestock Schedule

## Tuesday, June 23rd

- 7 am – 7 pm      Livestock Office Open  
Pre-purchased Admission & Parking Credentials available at Livestock Office.  
All Gate & Parking Credentials will be required starting Wednesday at 5 am.  
Check-in Breeding Animal Registration Papers at Livestock Office. Papers  
must be verified by 5 pm.
- 8 am      **Jr. Rabbit Show** (South End – Show Pavilion Arena)  
Shown in order of:  
Primary Rabbit Showmanship followed by,  
4-H Rabbit Meat Pen Show followed by,  
4-H Rabbit Showmanship followed by,  
FFA Rabbit Meat Pen Show followed by,  
FFA Rabbit Showmanship followed by,  
Supreme Champion Meat Rabbit Selection followed by,  
Jr. Breeding Rabbit Show
- 8 am      **Jr. Chicken Show** (North End – Show Pavillion Arena)  
Shown in order of:  
4-H Chicken Meat Pens followed by,  
FFA Chicken Meat Pens followed by,  
Supreme Champion Chicken Meat Pen Selection followed by,  
Primary Chicken Showmanship followed by,  
4-H Chicken Showmanship followed by,  
FFA Chicken Showmanship
- 1 pm      **Jr. Turkey Show** (North End – Show Pavillion Arena)  
Shown in order of:  
4-H Market Turkey Show followed by,  
4-H Turkey Showmanship followed by,  
FFA Market Turkey Show followed by,  
FFA Turkey Showmanship followed by,  
Supreme Champion Turkey Selection
- 5 pm      **Exhibitor's Meeting** (Show Pavilion Arena)  
Rule Updates  
Show Updates  
Pie Eating Contest  
Will be immediately followed by the Ag Bowl Contest
- 6 pm      AG Quiz Bowl Contest (Show Pavilion Arena)  
Sponsored & Coordinated by the Yuba-Sutter Farm Bureau
- 10 pm      Barns Closed

# 2026 Livestock Schedule

## Wednesday, June 24<sup>th</sup>

5 am	Barns Open <b>Gate Admission &amp; Parking Passes are required</b> for all Livestock Exhibitors and Parents for gate entry and parking.
5 am – 7 am	Supply and Tack deliveries allowed in Livestock and RV Areas. All Vehicles must be off grounds by no later than 7:00 am
6 am – 6 pm	Livestock Office Open
7 am	<b>FFA Swine Show</b> (North End - Show Pavilion Arena) Shown in order of; FFA Market Swine Show followed by, FFA Swine Showmanship
8 am	<b>Jr. Sheep Show</b> (South End - Show Pavilion Arena) Shown in order of; 4-H Market Lamb Show followed by, 4-H Sheep Showmanship followed by, -15 MINUTE BREAK- FFA Market Lamb Show followed by, FFA Sheep Showmanship followed by, Jr. Breeding Sheep Show
6:30 – 8:00 pm	<b>Exhibitors' Social</b> Enjoy pizza dinner, music, dancing and cornhole board games for the Livestock Exhibitors in the Picnic Area Line Dancing Lessons – Sponsored & Coordinated by the Yuba-Sutter Farm Bureau
8 pm - 10 pm	<b>Exhibitors' Carnival Showcase</b> Special two-hour Carnival Showcase for livestock exhibitors and their family members to enjoy the carnival rides and games prior to the official fair opening. All carnival rides and games are available at the normal fair-time applicable rates. Exhibitors will be required to have a carnival wristband or purchase individual ride tickets.
10 pm	Barns Closed

## Thursday, June 25<sup>th</sup> "Opening Day of Fair"

5 am	Barns Open
5 am - 7 am	Supply and Tack deliveries allowed in Livestock and RV Areas. All Vehicles must be off grounds by no later than 7:00 am
7 am – 7 pm	Livestock Office Open
8 am	Gate Admission for General Public Admission Passes will be required for gate entry of all attendees starting at 8 am. Admission tickets will be available for purchase at Gate #8.
8 am	<b>4-H Swine Show</b> (North End - Show Pavilion Arena) Shown in order of; 4-H Market Swine Show followed by, 4-H Swine Showmanship followed by, Jr. Breeding Swine Show

## Thursday, June 25<sup>th</sup> "Opening Day of Fair" (continued)

# 2026 Livestock Schedule

8 am	<b>Jr. Beef Show</b> (South End - Show Pavilion Arena) Shown in order of; 4-H Market Beef Show followed by, 4-H Beef Showmanship followed by, FFA Market Beef Show followed by, FFA Beef Showmanship followed by, Bred Replacement Heifer Show followed by Jr. Breeding Beef Show
12 Noon	<b>Jr. Meat Goat Show</b> (North End - Show Pavilion Arena) Shown in order of; 4-H Market Goat Show followed by, 4-H Market Goat Showmanship followed by, FFA Market Goat Show followed by, FFA Market Goat Showmanship followed by, Jr. Breeding Meat Goat Show
8 pm	<b>Supreme Champion Selection</b> (Show Pavilion Arena) Shown in order of; Recognition of the Small Animal Supreme Champions, followed by, Supreme Champion Markey Swine, followed by, Supreme Champion Market Goats, followed by, Supreme Champion Market Lambs, followed by, Supreme Champion Market Beef
10 pm	Barns Closed

## Friday, June 26<sup>th</sup>

5 am	Barns Open
6 am - 7 am	Supply and Tack deliveries allowed in Livestock and RV Areas. All Vehicles must be off grounds by no later than 7:00 am
7 am – 5 pm	Livestock Office Open
10 am	<b>Pee-Wee Showmanship</b> (Show Pavilion Arena) Enter/Register at Showring
1 pm	<b>Small Animal Master Showmanship</b> (Show Pavilion Arena) Breeding Rabbits & Poultry will be released after Small Animal Master Showmanship. Must be removed from fairgrounds by 8 pm.
5 pm	<b>Large Animal Master Showmanship</b> (Show Pavilion Arena)
8 pm	All Breeding Rabbits & Breeding Poultry dismissed. Must be removed from the fairgrounds. Will be released following the conclusion of the Small Animal Master Showmanship.
10 pm	Barns Closed

# 2026 Livestock Schedule

## Saturday, June 27<sup>th</sup>

5 am	Barns Open
5 am – 7 am	Supply and Tack deliveries allowed in Livestock and RV Areas. All Vehicles must be off grounds by no later than 7:00 am
8:30 am	Jr. Livestock Auction Introductions & Announcements
9 am	Jr. Livestock Auction Starts (Show Pavilion Arena)
9 am – 2 pm	Industrial & Vocational Skills Projects Silent Auction (Sale Area)
12 Noon	Sale of Champions followed by Mark Lemenager Scholarship lot
10 pm	Barns Closed

## Sunday, June 28<sup>th</sup>

5 am	Barns Open
7 am – 7 pm	Livestock Office Open
7 am	LOAD-OUT of Market Steers
10 am	Awards Ceremony (Show Pavilion Arena)
1 pm -2 pm	LOAD-OUT of Market Goats and Market Lambs: Move to Load-out pens located at the Show Pavilion
6 – 9am / 5 - 8pm	Jr. Livestock Released per approval by Livestock Superintendent Exhibitor must receive a signed release form in order to enter the Livestock Gate with trailer for loadout.

# Credentials & Passes

## General Credential Information

1. Gate Admission for Livestock Exhibitors and Parents and Livestock Parking Passes will be required for entry and parking beginning on Wednesday, June 24<sup>th</sup>.
2. Gate Admission for General Public: Admission Passes will be required for gate entry of the general public starting on Thursday, June 25<sup>th</sup> at 8 am.
3. Advanced prepaid discounted passes are available for purchase on the online entry program through the entry deadline date, May 1<sup>st</sup> for livestock exhibitors and their families to purchase admission wristbands, all week parking passes and the 4-day carnival wristbands.
4. Credential prices will increase after the entry deadline date, May 1<sup>st</sup>. All credentials purchased after May 1<sup>st</sup> will only be available for purchase at the fair main office. After May 1<sup>st</sup>, the prices for the special discounted livestock exhibitor passes will increase (see below for prices) and will only be available until Tuesday, June 23<sup>rd</sup> at 5 pm at the fair office.
5. Passes/Credentials will be signed out to the parents of Jr. Livestock exhibitors on Monday, June 22<sup>nd</sup> between 9 am and 3 pm and Tuesday, June 23<sup>rd</sup> between 9 am and 5 pm.

## Gate Admission Passes/Wristbands – Exhibitors and Family Members

6. Exhibitor Admission Wristband:
  - Price: \$10 each if purchased by May 1<sup>st</sup>. \$15 each if purchased after May 1<sup>st</sup>.
  - Jr. Livestock Exhibitor and Vocational Project Exhibitors must purchase an individual one admission wristband for fair-time access. Limit one per exhibitor.
  - Dog, Pygmy Goat, Dairy Goat and Horse Show Exhibitors only will NOT be required to purchase credentials due to these shows being scheduled prior to fair.
7. Parent Admission Wristband:
  - Price: \$15 each if purchased by May 1<sup>st</sup>. \$20 each if purchased after May 1<sup>st</sup>.
  - One wristband provides fair admittance for one (1) parent everyday during fair week
  - A minimum of one (1) parent wristband at \$15 each and maximum of four (4) parent wristbands per family.
8. Sibling Admission Wristband:
  - Price: \$10 each if purchased by May 1<sup>st</sup>. \$15 each if purchased after May 1<sup>st</sup>.
  - One wristband provides fair admittance for one (1) sibling of the exhibitor everyday during fair week.
  - Wristband (may be purchased with Parent Wristband if exhibitor has a sibling(s) not entered/exhibiting livestock in the current fair) is \$10.00 each.
9. Grandparent Admission Wristband:
  - Price: \$15 each if purchased by May 1<sup>st</sup>. \$20 each if purchased after May 1<sup>st</sup>.
  - One wristband provides fair admittance for one (1) grandparent everyday during fair week
10. **Ripped bands will be replaced-one time only.** (Old wristband must be turned in at the same time). There will be a \$10.00 charge after the replacement of the first damaged band.

## Vehicle & Livestock Trailer Parking – Exhibitors and Family Members

11. Parking:
  - Price: \$20 parking permit (good for 5 days) if purchased by May 1<sup>st</sup>, \$25 each if purchased after May 1<sup>st</sup>.
  - Livestock Parking Lot is located on the east side of Garden Highway.
  - Attendants will begin to require parking permits on Wednesday, June 24<sup>th</sup> at 5 am in the Livestock Parking Lot. If you do not have a credential in your window by Wednesday morning at 5 am and the credential must remain in your vehicle when parked in the livestock parking lot, if not your vehicle could be towed at your expense.

- Parking credentials can be purchased up until May 1<sup>st</sup> or until sold out whichever comes first. One parking pass per family.
  - Cars parked in the Livestock or Trailer area are subject to tow at owner's expense.
12. Trailers Transporting Livestock: East Parking Lot permits (good for 5 days) \$50.00. Vehicles and stock trailers must be removed from the Barn Area to the Livestock Parking Lot immediately after unloading. Vehicles left unattended are subject to tow.

### **Carnival All Access Wristband – Exhibitors and Family Members Only**

- Price: \$70 each if purchased by May 1<sup>st</sup>. \$80 each if purchased after May 1<sup>st</sup>.
- Available to exhibitors and their immediate family members living within their household.
- Unlimited rides the four (4) days of fair.
- Includes Carnival Party on Wednesday prior to fair opening. The carnival party event is only for **Livestock Exhibitors and their immediate families**.

# Livestock Credentials/Passes Information & Order Form

*This form is also available online at [www.ysfair.com](http://www.ysfair.com) on the Livestock Exhibitor's page.*

Purchase Online through May 1<sup>st</sup>. Advanced prepaid discounted passes are available for purchase on the online entry program through May 1<sup>st</sup> for livestock exhibitors and their families to purchase admission wristbands, all week parking passes and the 4 day - carnival wristband.

After May 1<sup>st</sup>, the prices for the special discounted livestock exhibitor passes will increase (see below for prices) and will only be available until Friday, June 14<sup>th</sup> at 5:00 pm at the fair office. Utilize this form when purchasing passes in the fair office after May 1<sup>st</sup>.

WRIST BAND/LIVESTOCK PASSES	Purchased <u>online</u> by May 1, 2026	Purchased at the <u>fair office</u> between May 2 <sup>nd</sup> thru June 23 <sup>rd</sup>
Livestock Carnival Wristband	\$70.00	\$80.00
Exhibitor Admission Wristband	\$10.00	\$15.00
Parent Admission Wristband	\$15.00	\$20.00
Sibling Admission Wristband	\$10.00	\$15.00
Grandparent Admission Wristband	\$15.00	\$20.00
Livestock Parking Lot	\$20.00	\$25.00

Wristband/Livestock Passes	Passes Purchased by May 1, 2026	Passes Purchased between May 2 - June 23	Requested Number	Amount Due
Livestock Carnival Wristband <small>(Carnival wristband valid all 4 days)</small>	\$70.00	\$80.00		
Exhibitor Admission Wristband <small>(Required for all Exhibitors except Dogs and Horses)</small>	\$10.00	\$15.00		
Parent Admission Wristband <small>(Limit 4 per family)</small>	\$15.00	\$20.00		
Sibling Admission Wristband <small>(Immediate Family Only - Ages 6 – 18)</small>	\$10.00	\$15.00		
Grandparent Admission Wristband <small>(Limit 4 per family)</small>	\$15.00	\$20.00		
Livestock Parking <small>(Limit 1 per family)</small>	\$20.00	\$25.00		
<b>TOTAL AMOUNT DUE</b>				

EXHIBITOR'S NAME: \_\_\_\_\_

PHONE NUMBER: (\_\_\_\_\_) \_\_\_\_\_ ALT PHONE: (\_\_\_\_\_) \_\_\_\_\_

Email: \_\_\_\_\_

Parent Name: \_\_\_\_\_ Purchased Date: \_\_\_\_\_

CLUB OR CHAPTER: \_\_\_\_\_

# Livestock RV Camping

## RV Park Occupant Rules & Procedures

### 1. RV LOT AREAS:

- a. North Livestock RV Dry Camp Lot: Capacity Limit: 60 RV Spaces
- b. Garden Highway and Barn Area RV Lot: 86 RV Spaces

### 2. RATES:

- a. North Livestock RV Dry Camp Lot: \$300
- b. Garden Highway and Barn Area RV Lot (w/ Hookups): \$450

### 3. OCCUPANT PERIOD OF STAY LIMITATIONS:

- a. Period of Stay: Saturday, June 20<sup>th</sup> thru Sunday, June 28<sup>th</sup> .

### 4. SERVICES PROVIDED:

- a. North Livestock RV Dry Camp Lot: The space fee includes the following:
  - i. One (1) 20' wide RV Space
  - ii. Portable Restroom Facilities will be made available in the North Livestock RV Dry Camp Lot
- b. Garden Highway and Barn Area RV Lot: The Space fee includes the following:
  - i. One (1) 22' wide RV space
  - ii. 30 Amp electric service
  - iii. Water Hookups are available at each space.

### 5. APPLICATION PROCESS:

- a. Garden Highway, Barn Area and Dry Lot RV Park Occupants from the previous years will have the first right of refusal to an RV Space for the upcoming fair. If payment is not received by Friday, February 13<sup>th</sup>, by 4 pm the Inside and Dry Lot RV Space will be automatically forfeited.
- b. Garden Highway and Barn Area RV spaces that are available will be offered to the Families in the Dry Lot based on how long you have been camping in the Dry Lot.
- c. Applications for the Dry Lot spaces that are available will be accepted starting Monday, March 2<sup>nd</sup> .
- d. Applications are available online for download at [www.ysfair.com](http://www.ysfair.com) on the Livestock Exhibitors page.

### 6. ASSIGNED RV SPACE LOCATION:

- a. The spaces will be assigned by the fair staff.

### 7. RV SIZE LIMITATIONS:

- a. RV's will be limited to a **maximum** size of **36'** from front to back not including the hitch and are subject to inspection upon entering the staging area. Any RV's over 36' will only be able to be in Dry Lot.

### 8. RV PARKING ARRIVAL & DEPARTURE PROCEDURES:

- a. RV's will arrive on Saturday, June 20<sup>th</sup> at your assigned time that you will receive in your RV Packet that will be mailed approximately 2 weeks prior to fair. The assigned times are done in groups so that we are able to get the RV's in their spaces in a somewhat organized and ease of parking. If you do not come at your assigned time

there is no guarantee that you will be able to get in your assigned space. All RV's must be in place by Saturday at 7 pm.

- b. All trailers must go in their spaces straight unless space is designated to be in a different direction by fair staff.
- c. All trailers must be backed or pulled all the way in their space to the line.
- d. RV'S may depart Sunday, June 28<sup>th</sup> until 6 am – 9 am or after 5 pm. All RV Trailers must be off the fairground's premises by Monday, June 29<sup>th</sup> at 8 pm. Trailers left on the fairgrounds after that time are subject to an additional daily rate fee and/or may be towed at the owner's expense.

#### 9. SUPERVISION/RESPONSIBLE PARTY:

- a. All junior exhibitors and anyone **under** the age of **18** MUST be accompanied by a parent/guardian or chaperone over the age of 25, excluding siblings.
- b. One responsible chaperone (parent or leader) 25 years of age or older is required per RV. Siblings are not considered chaperones no matter the age. No Junior Exhibitor, even if **18 or over**, can stay without a chaperone. If there is no chaperone after 10:00 pm thru 6:00 am and your RV is checked you will not be able to reserve a RV space for future Yuba-Sutter Fairs and your trailer will need to be removed.

#### 10. GENERAL RV PARK RULES:

- a. Recreational Vehicles (RVs) present on the fairgrounds may be removed from the premises at the owner's expense and no refund for the failure to comply with the RV Park Occupant Rules & Regulations. (Civil Code Section 799.22, 799.25 & 799.57)
- b. One RV/Tent per camp space in the Garden Highway and Barn Area RV Lot.
- c. No firearms, weapons or illegal drugs are permitted on the fairgrounds. Fair Management reserves the right to determine what is considered a weapon.
- d. No motorized scooters, razor scooters, bicycles, hoverboards, drones or skateboards are allowed on the fairgrounds or livestock area.**
- e. No smoking in the RV or Barn areas. Smoking is allowed in designated smoking areas only.
- f. No trimming of trees, defacing or vandalizing fair property.
- g. At no time may an extension cord be stretched across a road or fire lane to supply electricity to other RV's or stock trucks. No multiple tie-ins will be allowed. Electrical cords must be in good condition and extension cords must not interfere with foot traffic.
- h. The speed limit inside the fairgrounds is 10 mph. No Speeding or Reckless Driving on the fairgrounds.
- i. The roads around the RV areas must be kept clear so that fire and emergency vehicles can drive through at any time. The minimum width of these roads is twenty (20) feet.
- j. Absolutely no gray water, sewage or effluent from sinks, portable toilets and any other plumbing fixtures are to be drained, dumped or leak directly upon or into ground surfaces. Pumping grey and black water from the holding tanks is acceptable if performed by a professional pumping service.
- k. Absolutely no livestock projects are allowed in the RV areas or west of Pig-a-dilly circle for the duration of the fair. Exercise animals in their respective barns or show rings only.

#### 11. PETS:

- a. Absolutely **NO** dogs or other pets with the exception of service dogs are allowed on the fairgrounds or in RV trailer areas for the duration of fair.

## 12. RV OCCUPANT COURTESY:

- a. Noise should be kept to minimum at all times. No loud radios or music at anytime.
- b. No outside appliances in RV spaces such as refrigerators, large TV's, etc.
- c. Generators must be turned off by 10:00 pm in the Garden Highway and Barn RV area. Generators may be used in the North Livestock RV Dry Camp Lot.
- d. All exhibitors should be in camp by 11:00 pm and not wandering in the barns or on the grounds.

## 13. ACCESS GATES:

- a. North Livestock RV Dry Camp Lot:
  - i. The "C" Street Gate is the only entry and exit gate for all RV's and Parked Vehicles located in the North Livestock RV Dry Camp Parking Lot.
  - ii. Occupants in the North Dry Lot will have walk-thru access on to the fairgrounds through two gates, Gate 15 and Gate 16.
  - iii. Gate 15 Scheduled Walk-thru Access:
    1. Will be accessible starting at 5 am through 11 pm from Sunday through Thursday.
    2. Will be accessible from 5 am to 6 pm from Friday through Sunday. Will be closed starting at 6 pm for Grandstand Event Arena access and safety needs. Access will only be available at Gate 16 after 6pm on Friday thru Sunday.
  - iv. Gate 16 Scheduled Walk-thru Access:
    1. Will be accessible 24/7 starting on Sunday.
- b. RV's parked in the Garden Highway and Barn Area will enter the fairgrounds through the Franklin Avenue Livestock Gate 8.

## 14. VEHICLE PARKING IN NORTH RV CAMP LOT:

- a. North Livestock RV Dry Camp Lot:
  - i. Vehicles will be required to be parked in the specified vehicle parking area located on the East side next to the North Livestock RV Dry Camp Lot. The west side of the North Parking lot will be used for staff, sponsor, vendor and volunteer parking purposes only.
  - ii. Parking permits are available for North Livestock RV Dry Camp Lot for \$20. The purchaser and user of the parking permit must be an occupant of the North Livestock RV Dry Camp Lot. Limit one (1) parking pass per family if parking space is available. **YOU MAY NOT PARK YOUR VEHICLE BY YOUR RV.**

## 15. VIOLATION OF RULES:

- a. Any violation of above rules may result in immediate ejection from the Fairgrounds, loss of privilege to sell in the Jr. Livestock Auction, entries removed from Fairgrounds, and loss of premiums.

# Local Livestock Rules

## General

1. All State and Local Rules apply. State Rules are available online at [ysfair.com](http://ysfair.com) or at the California Department of Food & Agriculture website located at [www.cdffa.ca.gov/FairsAndExpositions/exhibit\\_and\\_livestock.html](http://www.cdffa.ca.gov/FairsAndExpositions/exhibit_and_livestock.html)
2. No refunds of entry fees, gate pass credentials, carnival passes or RV Camp fees.
3. Late Entry Policy: Market animal late entries will be accepted for the 10 days immediately following that specie's entry deadline. A late fee of \$25 will be added to the entry fee and must be received within 10 days of the entry deadline. The applicable ownership rules per specie stated in the state rules still apply and must be verified with all late entries. Late entries for Showmanship will be accepted up until the class is shown. A late fee of \$10 will be added to the Showmanship entry fee if received within 10 days of the entry deadline. A late fee of \$25 will be added to the Showmanship entry fee for all Showmanship entries received after the tenth day past the showmanship entry deadline.
4. Premium Checks: Exhibitor premium checks will NOT be mailed to you after the fair. You must pick up your premium check in the fair office. The premium checks will be ready to be picked up 15 days after the last day of the fair. Checks not picked up and/or cashed prior to December 31<sup>st</sup> will be voided, destroyed and not re-issued.
5. Placing of ribbons does not guarantee correct judging placement. Only the official placing stated on the judging sheet(s) constitutes the final placement. Cash awards will be paid only as recorded on signed Judging Sheet and only to the exhibitor.
6. No exhibitor shall receive more than two cash awards in any one class using American judging system.
7. The fair will not be responsible for exhibits left 24 hours after the close of the fair. All exhibits and equipment MUST be claimed and removed within 5 days. After 5 days the items become property of the fair.
8. Participant (Junior Exhibitor), Parent or Guardian, 4-H Leader or FFA Instructor Agreement of Responsibility and Liability: It is clearly understood and agreed that the Fair and its officials, officers, directors, employees and agents shall not be responsible for any damage, loss or injury to any person or property which is caused directly or indirectly for any reason. The exhibitor, owner, parents or legal guardian, their agents and/or representatives, (hereinafter collectively referred to as "Participants"), agree to indemnify and hold the Fair harmless of any damage, injury or loss suffered during or in connection with the Yuba-Sutter Fair. In the event Fair is subject to any expense or liability, including, but not limited to consultant fees, legal or court costs, the Fair management labor and expenses, expenses and/or costs for blood, tissue, hide and/or carcass sampling and testing incurred as a result of a Fair rule and regulation violation and all agreements there under, including, but not limited to unethical fitting, filling, meat tampering, illegal or non-approved use of drugs, medication and/or prohibited substance(s) as a result of Participants involvement in the Fair Junior Livestock Show and Auction, Participant, or if participant is a minor, participants parent or guardian shall indemnify and hold harmless the Fair for all damage, expenses and liabilities incurred as a result thereof. Participant(s) may also be subject to criminal charges.
9. By submitting an application for entry, participants agree to comply with all local and state rules and regulations governing the Yuba-Sutter Fair.

## Violations

10. If a Junior Exhibitor is found to be in violation of any of the Livestock Department rules, he/she and his/her family may be forever disqualified from showing at the Yuba-Sutter Fair.
11. A Junior Exhibitor, who in the opinion of Fair Management, 4-H Leaders, FFA Advisor or Grange Leader, fails to conform to or accept the set standards of conduct as designated by his/her organization or by the 13th DAA Rules, may be disqualified from competition and removed from the fairgrounds along with his/her entries. This decision may be made at the discretion of his/her leader, advisor or Fair Management.

12. The management shall reserve the right to vacate, declare ineligible for competition, and/or order the removal of any entry which is not in the best interest of the Fair, is unsightly, unhealthy, injured, lame, unsound, endangers public safety, violates the Fair's Animal Welfare Policies, or has been entered in violation of these rules and regulations.
13. If an exhibitor is disqualified at any local, county, regional, state or national show will be ineligible to exhibit at the Yuba- Sutter Fair for at least one (1) year, if not disqualified from exhibiting permanently. This may also apply to siblings if the violation was associated to ethical practices.
14. Any unpaid debt to the fair by an exhibitor's immediate family will make the exhibitor(s) ineligible to show at the Yuba-Sutter Fair.

## **Exhibitor & Parent Conduct**

15. Fair Management reserves the right to immediately remove any exhibitor from competition and/or the Junior Livestock Auction, as well as withhold premiums (cash and awards), void sale of Junior Livestock Auction animal, and revoke exhibiting privileges for a period of 13 months from the date of the infraction for "unacceptable conduct" by the exhibitor and/or immediate family member of the exhibitor as described in the Exhibitor's Responsibility Form. Examples of "unacceptable conduct" are, but not limited to:
  - a. Possession and use of alcoholic beverages by a minor, under the age of 21;
  - b. Possession and use of all tobacco products, under the age of 21;
  - c. The use of any drugs other than prescription medication;
  - d. Smoking in the barns or non-smoking areas;
  - e. Violation of curfew without permission;
  - f. Obscene language or gestures directed to any judge, employee, or fair official;
  - g. Criticizing or interfering with the judge, show management, or other exhibitors while in the show ring or other conduct determined detrimental to the show.
16. Exhibitors, their immediate family and agents thereof, who do not cooperate with Security Personnel or other Fair Officials in all matters of policy, including but not limited to parking, stall/pen/space assignments and judging, will have their entries cancelled and will be ordered to remove their exhibits from the grounds immediately and forfeit all awards, premium monies and sale proceeds. All parties involved will not be allowed back on the grounds for the remainder of that fair year. Failure to adhere to this rule may result in being disqualified from future Yuba-Sutter Fairs.
17. Exhibitors, their immediate family or agents thereof, causing public disturbance, those that are verbally abusive, those that are uncooperative and/or unsportsmanlike, those not following good animal welfare practices as determined by management, or those found in violation of rules or in practices inadmissible with the Fair program and/or policies/procedures shall be penalized. Penalties shall include forfeiture of awards, premiums and sale proceeds.

## **Eligibility Requirements**

18. The Junior Livestock Department is restricted to members of FFA, who are under the supervision of the Bureau of Agricultural Education; members of the 4-H Youth Groups, who are under the supervision of the University of California Cooperative Extension; members of the California State Grange and Independent Exhibitors.
19. Junior Livestock Exhibitors must meet the attendance requirements and/or qualifications set forth by their respective organization. Responsibility of enforcement of membership requirements rests with the leader or advisor of that organization. Local clubs and chapters may strengthen the fairs' local rules but may not detract from them. Any 4-H Project Leader or Community Leader/4-H County Youth Advisor/FFA Advisor/Grange Leader has the authority to pull ANY fair entry that is under their supervision at any time prior to the entry being officially weighed-in, if the exhibitor(s) has not met the requirements set forth by their respective organization.
20. The Yuba-Sutter Fair has the right to refuse entry forms signed by unauthorized leaders and/or advisors. Before entry deadline, Fair management also may ask that the community leader and/or County 4-H advisor to sign/authorize entries if proof and/or suspicion of wrong-doing has occurred.

21. The Yuba-Sutter Fair reserves the right to request the birth certificate of any exhibitor to verify age requirements.

#### **FFA MEMBER EXHIBITOR REQUIREMENTS**

22. FFA Members in good standing are entitled to compete in the FFA department for one calendar year following the year in which they graduate from high school.
23. All FFA exhibitors must be in FFA uniform when showing their animals in FFA divisions or be disqualified from the class/auction. The official Yuba-Sutter Fair FFA uniform shall consist of white pants, white dress shirt, the official FFA jacket zipped to the top with the official FFA necktie or scarf and closed in shoes/boots. Shirts must be tucked in and have short or long sleeves (not sleeveless). Hats or headgear of any kind shall not be worn with the official show uniform while exhibiting. Any exhibitor not conforming to these qualifications will be disqualified from the class and/or auction.

#### **4-H MEMBER EXHIBITOR REQUIREMENTS**

24. 4-H Exhibitors must be at least 9 years old prior to January 1, 2026. 4-H Exhibitors are eligible to compete through December 31st of the year in which they turn 19 years of age.
25. All 4-H exhibitors must be in 4-H uniforms when showing and selling their animals in 4-H divisions or be disqualified from the class/auction. The official Yuba-Sutter Fair 4-H uniform shall consist of white pants, white collared dress/polo shirt, the official 4-H tie or scarf, the official 4-H cap and closed in shoes/boots. Shirt must be tucked in and have short or long sleeves (not sleeveless). The 4-H hat must be worn on head and not placed in back pocket. Any exhibitor not conforming to these qualifications will be disqualified from the class and/or auction.

#### **PRIMARY 4-H MEMBER EXHIBITOR REQUIREMENTS**

26. A Primary 4-H Exhibitor must be at least five (5) and less than nine (9) years of age prior to January 1, 2026 and is not eligible to exhibit Beef, Sheep, Swine or Meat Goats or participate in the Junior Livestock Market Divisions or Auction.
27. All Primary 4-H Exhibitors must wear 4-H uniforms when showing their animals in Junior Divisions. The official Yuba-Sutter Fair 4-H uniform shall consist of white pants, white collared dress/polo shirt, the official 4-H tie or scarf, the official 4-H cap and closed in shoes/boots. Shirt must be tucked in and have short or long sleeves (not sleeveless). The 4-H hat must be worn on head and not placed in back pocket. Any exhibitor not conforming to these qualifications may be disqualified from the class.
28. Primary 4-H Exhibitors may only enter small animals including poultry, rabbits, dogs and pygmy goats. May only enter one (1) animal per species Showmanship only, with the exception of pygmy goats. Please refer to the Primary 4-H Division in the exhibitor handbook for classes available to Primary 4-H Members.
29. The Danish System of judging will be used in the placing of all Primary 4-H Divisions.
30. Primary 4-H Members will not be eligible to collect any monetary awards or premiums. They may only compete for ribbons and/or sponsored awards.

#### **GRANGE JR. EXHIBITOR REQUIREMENTS**

31. California State Grange Exhibitors must be at least 9 years old or in the 4<sup>th</sup> grade prior to January 1, 2026. Grange Exhibitors are eligible to compete through December 31<sup>st</sup> of the year in which they turn 19 years of age.
32. Grange Exhibitors ages nine (9) through thirteen (13) prior to January 1, 2026, must compete in 4-H Divisions. Grange Exhibitors ages fourteen (14) through nineteen (19) prior to January 1, 2026, must compete in FFA Divisions.
33. All Grange Exhibitors must wear a Grange uniform when exhibiting and selling their animals. The official Yuba-Sutter Fair Grange uniform shall consist of white pants, white collared dress/polo shirt, the official red Grange vest and closed in shoes/boots. Shirt must be tucked in and have short or long sleeves (not sleeveless). Any exhibitor not conforming to these uniform requirements will be disqualified from the class and /or auction.
34. Youth may be ineligible to participate as a Grange Exhibitor if documented disciplinary action involving their project(s) has been taken against them by 4-H or FFA. Length of ineligibility to be determined by fair management.

## PRIMARY GRANGE MEMBER EXHIBITOR REQUIREMENTS

35. A Primary Grange Exhibitor must be at least five (5) and less than nine (9) years of age prior to January 1, 2026 and is not eligible to exhibit Beef, Sheep, Swine or Meat Goats or participate in the Junior Livestock Market Divisions or Auction.
36. All Primary Grange Exhibitors must wear a Grange uniform when exhibiting their animals. The official Yuba-Sutter Fair Grange uniform shall consist of white pants, white collared dress/polo shirt, the official red Grange vest and closed in shoes/boots. Shirt must be tucked in and have short or long sleeves (not sleeveless). Any exhibitor not conforming to these uniform requirements will be disqualified from the class.
37. Primary Grange Exhibitors may only enter small animals including poultry, rabbits, dogs and pygmy goats. May only enter one (1) animal per species Showmanship only, with the exception of pygmy goats. Please refer to the Primary Grange Division in the exhibitor handbook for classes available to Primary Grange Members.
38. The Danish System of judging will be used in the placing of all Primary Grange Divisions.
39. Primary Grange Members will not be eligible to collect any monetary awards or premiums. They may only compete for ribbons and/or sponsored awards.

## INDEPENDENT EXHIBITOR REQUIREMENTS

40. Independent Exhibitors must reside in Yuba or Sutter County and be at least 9 years old prior to January 1, 2026. Exhibitors are eligible to compete through December 31<sup>st</sup> of the year in which they turn 19 years of age.
41. Independent Exhibitors ages nine (9) through thirteen (13) prior to January 1, 2026, must compete in 4-H Divisions. Independent Exhibitors ages fourteen (14) through nineteen (19) prior to January 1, 2026, must compete in FFA Divisions.
42. All Independent Exhibitors must wear the official Yuba-Sutter Fair Independent uniform when exhibiting and selling their animals. The Independent Exhibitor uniform shall consist of white pants, a white collared dress/polo shirt and closed in shoes/boots. Shirt must be tucked in and have short or long sleeves (not sleeveless). Any exhibitor not conforming to these qualifications will be disqualified from the class and /or auction.
43. Exhibitors participating a year out of high school and are not eligible to show in FFA or 4-H are not eligible to show as an Independent Exhibitor.
44. Youth may be ineligible to participate as an Independent Exhibitor if documented disciplinary action involving their project(s) has been taken against them by 4-H or FFA. Length of ineligibility to be determined by fair management.
45. Juniors who have been 4-H, FFA or Grange organization members within 60 days (120 days for horse and market beef) prior to the fair are not eligible to compete in that project as Independent Exhibitor (or vice versa) or enter project(s) under a different organization.
46. Independent Exhibitors must have responsible adult supervision at all times while on the fairgrounds.
47. To be eligible to exhibit as an Independent Exhibitor, the following requirements must be completed;
  - a. Submit a completed Independent Exhibitor Declaration Form to the Fair Office by November 3<sup>rd</sup>.
  - b. Complete a Quality Assurance & Ethics Training course during the calendar year no later than May 1, 2026. (Quality Assurance & Ethics Training is good for 3 years)
  - c. Turn in pictures of animal(s), copy of bill of sale, to the Fair Office by the entry deadline of the specific specie.
  - d. Complete and submit a Market Animal entry online by the entry deadline listed in the Exhibitor Guidebook.
  - e. Independent Exhibitors must purchase individual liability insurance through the fair office to cover them while they are at fair showing their animal. Insurance cost is \$40 per exhibitor and must be purchased by when species entries close.
  - f. Complete twenty-five (25) hours of Community Service at the Yuba-Sutter Fairgrounds within the calendar year **prior to their entry deadline for their species**. Provide proof of community service in your record book. Contact the fair office for available work days and work needs.
  - g. Attend at least two (2) YS Fair JLA Meetings and one (1) YS Fair Board Meeting and

present a five (5) minute presentation related to your project to the board on May 27, 2026 @ 5:30 pm. Please refer to the meeting schedule posted online at [www.ysfair.com](http://www.ysfair.com). The presentation must be approved by the board of directors to meet the presentation requirement.

- h. Provide a minimum of 1 hour of service for the Yuba-Sutter Fair Heritage Foundation during the Jr. Livestock Auction assisting with buyer refreshments and/or buyer paperwork needs. Contact the fair office for your time slot schedule prior to the fair.
- h. Turn in a completed Record Book to the Fair Office on May 27, 2026 by 5:30 pm for the fair office to review and approve. If the record book is not fully completed or received by the due date the exhibitor will not be allowed to weigh-in, show or sale.
- i. Deliver the animal to the Fair. All animals must go through Health Check and be in place by the specified time. Submit a Medication Declaration form at the time of weigh-in.
- j. Attend mandatory Exhibitors and Parents Meeting on Tuesday, June 23, 2026 at 5:30 pm at Livestock Pavilion.
- k. Independent Exhibitors must check in at the Livestock Office twice per day, once in the morning and once in the afternoon.

## Ownership & Entry Requirements

- 48. Quality Assurance & Ethics Training Course Requirement: All 4-H, FFA, Grange and Independent livestock exhibitors are required to complete a state approved Quality Assurance and Ethics Training course prior to May 1, 2026. (Good for 3 Years)
- 49. All Livestock Exhibitors are required to accept the terms and conditions included in the Exhibitor Responsibility Form as a prerequisite when entering online.
- 50. Divisions limited to eligible and active members of FFA & Grange Chapters, 4-H Clubs and Independent exhibitors of Yuba and Sutter Counties include all Market Animal Divisions (Beef, Sheep, Swine, Meat Goats, Poultry, Turkeys and Rabbits), Pygmy Goats, Showmanship, Horse and Dog Show divisions.
- 51. Junior Livestock Breeding Divisions are open to eligible members of FFA & Grange Chapters, 4-H Clubs and Independent exhibitors who are residents of any county in the State of California.
- 52. Junior Large Animal Divisions include Beef, Sheep, Swine, and Meat Goats.
- 53. Junior Small Animal Divisions include Dog, Rabbit, Chickens, Turkeys and Pygmy Goats.

## Market Animal Ownership/Entry Requirements

- 54. To be eligible for the show and/or sale, each market animal entered must be owned by the exhibitor, and be a part of a project under the exhibitor's care and management for at least:
  - a. 30 consecutive days for all Market Poultry and Market Rabbits,
  - b. 45 consecutive days for Market Turkeys,
  - c. 60 consecutive days for Market Goats, Market Sheep and Market Swine,
  - d. 120 consecutive days for Market Beef,
  - e. 120 consecutive days for Bred Replacement Heifersprior to the opening day of the Yuba-Sutter Fair. The official ownership date is the date shown on the receipt/bill of sale unless the animal was bred by the exhibitor.
- 55. All Market Animal Exhibitors must upload a photo of the animal by the entry due date. Entries submitted without a photo will be incomplete and not accepted as a valid entry. Late entry fee policy and fees will apply.
- 56. Primary Market Animal: An exhibitor may only enter one (1) Primary market animal.
- 57. Back-up Market Animal(s): An exhibitor may enter an unlimited number of backup animals. Back-up animals may be a different species or a vocational project. If an exhibitor has more than one market animal, they must declare "primary" or "back-up" on the entry form. Turkeys, Chickens and Rabbits do not need to enter back-up animals.
- 58. Family Backup Animal: Definition of "family." A family back-up animal can only be used by an immediate family member by marriage, birth or adoption. **Each** family member using the same family back-up animal must properly enter it and pay the appropriate entry fee prior to the entry deadline.
- 59. An exhibitor may only bring one (1) market animal to the fair and across the scales, even if you

tag multiple back-up animals.

60. Replacement Market Animal: If a market animal is lost due to an "insurable death" or suffers a broken bone or other lameness condition preventing it to be exhibited in a showable condition, all of which must be verified by a veterinarian, after the entry deadline and there are no tagged backup animal(s), an exhibitor may with and at the discretion of fair management, substitute a replacement market animal for the entered animal. The deadline for a replacement animal will be 21 days from the opening day of the fair and after the 21-day deadline it will be at the discretion of the fair management if a replacement animal can be substituted. Replacement animals will not be eligible to compete in any champion drive.

#### **Breeding Animal Ownership Requirements**

61. To be eligible for the show each breeding animal entered must be owned by the exhibitor and be a part of a project under the exhibitor's care and management for at least 30 consecutive days prior to the opening day of the Yuba-Sutter Fair. Bred Replacement Heifers must be owned for 120 consecutive days.

### **Animal Identification**

62. All breeding animals shall be identified by a permanent number (ear tag, legible, easy-to-read tattoo, ear notch, leg band or electronic identification) on the animal and recorded on the entry form.
63. All animals in "breeding animal" registered divisions must be registered and recorded with the applicable breed association in the exact name of the exhibitor (owner) as declared on the entry form. **Rabbits must have tattoos prior to arriving on grounds.**
64. Original Registration Certificates must be available on request at any time. Photocopies are not eligible. All registration papers must be reviewed and verified by the Livestock Office before entries are allowed to be judged.
65. Any animal that is registered through a breed association must be entered in a registered division. A registered animal is not eligible to compete in a grade division.
66. **All animals with ear notching or tattoo identification must have been tattooed or notched prior to arrival at the Fair.**
67. All market beef, sheep, swine, and goats must be identified by an ear tag provided and made available at the fair office. All 4-H Club project leaders, FFA Advisors and Grange Leaders may pick up the ear tags from the fair office to assist their club/chapter members. Ultimately, it is the responsibility of the exhibitors to have their animals tagged by the deadline entry and tagging date.
68. Ear tags must be securely attached and remain on the animal at all times unless removed by fair personnel. If an ear tag is replaced the exhibitor must submit a new picture within five (5) business days to the Fair Office.
69. For each market animal tagged, the exhibitor must upload with their online entry animal entry a color photograph of the animal displaying the permanently inserted tag with the animal's head and body included in the picture.
70. Any removal and/or switching of ear tags of market animals after the tagging deadline is PROHIBITED. If proof of removal and or any wrong doing is determined by Fair Management, (1) The animal(s) will be disqualified from the show and/or auction, (2) All awards and auction proceeds will be forfeited, and (3) The exhibitor may be disqualified from exhibiting at the Yuba-Sutter Fair indefinitely.

### **Ethical Presentation & Treatment of Livestock**

71. Animals will not be muzzled while on the fairgrounds.

### **Animal Health & Medication Rules**

72. Upon arrival all Chickens & Turkeys will be required to pass a health inspection performed by the Fair's Poultry Health Inspector.
73. All Swine, Sheep, Goats and Beef entered for exhibit at the fair will be required to pass a Health Inspection by a designated fair representative. Any animal that does not pass the health inspection will be required to be removed from the grounds immediately and if the decision is questionable the animal will be moved to quarantine pen and the fair veterinarian

will be called in to determine if the animal is eligible to show. The Fairs' official veterinarian's determination in health standards of any animal is final. No outside vet correspondence in argument of judgment will be accepted.

74. The designated fair representative will check all livestock for signs of communicable disease, external parasites, unsightly disease conditions, and any wounds, open or closed, that may be contagious. Specific health conditions that may warrant quarantine and/or dismissal are and not limited to, active ringworm, warts, sore-mouth, prolapse, infectious scours or dysentery, pinkeye, lice, mites, foot-rot, infectious pneumonia and abscesses which are balding, showing hair separation, open, draining or still scabbed. Animals that are injured may also be dismissed.
75. All exhibitors of market animals are required to submit a Medication Declaration Form at the scales prior to their official weigh-in.
76. Electrolytes are allowed to be administered to all animals for hydration purposes.
77. If an animal requires medical treatment while on the fairgrounds only a licensed veterinarian will be allowed to administer any drug. The Livestock Superintendent must be notified when there is evidence of illness in any animal entered for competition. If a veterinarian visit is required all costs will be incurred by the exhibitor.
78. Any medication administered to a market animal with a withdrawal period that extends past the date of the sale must submit a request to the Fair Management/Fair Board Executive Committee for approval. Approval will depend on the harvest facility capability to house & care for the animal through the withdrawal period until safely processed. Exhibitor will be responsible for all expenses incurred.
79. Post Mortem Examination: The Fair may request a post mortem examination of any animal which dies at the Yuba-Sutter Fair. This will be performed by a licensed veterinarian at the expense of the exhibitor.
80. All swine, sheep, and goats may only be exercised in that species show ring. NO animals are allowed in the Carnival or RV areas.
81. All market lambs must be shorn within 7 days of weigh in. All market lambs not shorn within that time period will be prohibited from weighing in.

## **Fitting and Showing**

82. Junior exhibitors are responsible for the handling, daily care and fitting of their animals. The Jr. Exhibitor's 4-H, FFA and Grange Leaders, Parents, Siblings and any other actively enrolled Yuba & Sutter County 4-H Club & FFA Chapter Members may also assist in the handling, daily care and fitting of the exhibitor's animals. The Jr. Exhibitor must be present when fitting assistance is being provided.
83. Juniors, who for extraordinary reasons cannot show their own animal, must make arrangements for showing that are acceptable by Fair Management, or be disqualified from competition. Contact the Fair Office to make these arrangements and receive permission in writing prior to arrival.
84. Exhibitors will be required to fit and groom their animals in fitting areas designated by the fair. Blocking Chutes, Generators, Pop up Tents, and/or Trim Tables will be assigned specific locations. Blocking Chutes, Generators, and Trim Tables that are placed in unapproved locations shall be moved or removed by fair staff without warning.
85. No one, with the exception of the judge, exhibitors, fair staff & fair volunteers will be allowed in the show ring once the show has started. Violation of this rule will cause disqualification of the exhibitor and forfeiture of any premiums.

## **Weigh In**

86. Exhibitors are only allowed to bring one entry across the scales for the official weigh-in.
87. The only scales that will be used for the purpose of the official weigh-in shall be those that are calibrated for the 13th DAA and staffed by Fair personnel. Portable scales are not allowed on the fairgrounds.
88. All market animals are required to be weighed in by the schedule for that species. Any animal that does not receive an official weight during the designated time period shall be ineligible for competition.
89. No wet, blanketed or muddy animals will be allowed to be weighed.

90. Disputed Weight Procedure: Re-weighing of market animals will only be allowed when the first weight taken is below minimum or above maximum. The exhibitor must state to the Weigh master immediately after the initial weight that they request a re-weigh. The animal must remain in the immediate scale area in view of the weighmaster. The scale will be balanced and the animal weighed again. The second weight becomes the official weight. If the animal is removed from the immediate scale area and then returned to the scale for a re-weigh, no re-weigh will be allowed.
91. All animals must be classified by Fair personnel into their proper class at the scales.
92. The Weight Limits for each species are as follows:
  - a. Beef: 1100 lbs. to 1450 lbs. (No Maximum Live Weight to Show)
  - b. Swine: 220 lbs. to 280 lbs. (Maximum Live Weight 300 lbs.)  
Swine over 300 lbs. will be disqualified.
  - c. Sheep: 100 lbs. to 160 lbs. (No Maximum Live Weight to Show)
  - d. Goats: 65 lbs. to 115 lbs. (No Maximum Live Weight to Show)
  - e. Rabbits: 3 - Rabbits weighing 3.5 lbs. to 5.5 lbs. each.  
Rabbits under 3.5 lbs. & over 5.5 lbs. will be disqualified.
  - f. Turkeys: 20 lbs. to 30 lbs. (Maximum Live Weight 30 lbs.)  
Turkeys under 20 lbs. and over 30 lbs. will be disqualified.
  - g. Poultry: 2 - Chickens weighing 3.5 lbs. to 6 lbs. each.  
Birds under 3.5 lbs. & over 6 lbs. will be disqualified.
93. The fair scales will be locked and unavailable for use prior to fair once they have been certified by the Weight & Measures Department.

### **Barn Hours, Stalling, Pens and Tie Outs**

94. Exhibitors are required to clean out and remove all bedding from their animal stalls by no later than 4 pm Wednesday following the fair. Failure to comply will result in a financial penalty.
95. The large animal barns (Beef, Sheep, Swine, Meat Goats) will be open and available from 5 am to 10 pm. No one is allowed to enter the large animal barns from 10 pm to 5 am unless authorized by Fair personnel.
96. The small animal barn will be open and available from 7 am to 10 pm. No one is allowed to enter the small animal barn from 10 pm to 7 am unless authorized by Fair personnel.
97. Pens and stalls will be assigned by Fair Management. Space may not be traded and no altering of pens or stalls is allowed without approval from the livestock superintendent.
98. Wood Shavings, Wood Pellet Shavings, Bark, and Straw are the only approved bedding to be used. Animals' pens must be bedded at all times.
99. Stalls, pens and aisles must be cleaned by 9 am each day.
100. Stalls, pens and animals must be neatly kept and supplied with necessary clean bedding. Pathways and approaches must be kept clean at all times for the convenience and safety of spectators.

### **Public Safety**

101. Animals that lack proper control and/or get loose may be disqualified at the discretion of the Fair Management for public safety purposes.
102. Blocking Chutes/Fitting Tables: No blocking chute/fitting table will be allowed in spaces other than those assigned by the Fair Staff. Failure to keep blocking chutes in assigned locations shall result in disqualification and/or loss of premiums.
103. Pop-Up Tents: Pop-Up tents are **not** allowed around the immediate perimeter of the show rings. Pop-up tents will not be allowed to block any aisle or access to the barns. The Fair reserves the right to remove and/or relocate any pop-up tent. Side walls on pop-up tents are not allowed. Failure to keep pop up tents in proper locations shall result in disqualification and/or loss of premiums. **Pop-up tent spaces alongside the Goat and in and around the Lamb Barn will be assigned.**
104. Generators: No generators will be allowed to operate within the Livestock Barns. All generators must be operated outside the barn. All portable electric generators must be equipped with Ground Fault Interrupter outlets. Storage of gas cans or any other flammable

- liquids are not permitted inside the livestock barns.
105. Extension Cords: Extension cords used to distribute power to electrical apparatus shall be rated 15 amps minimum and contain a ground wire. Cords not meeting these requirements shall be confiscated for the duration of the Fair. No electrical cords are allowed in any public walk spaces.
  106. Aisleways should remain clear and provide a safe path of access for the public to view the animals.
  107. Heat producing appliances such as heaters, electric skillets, toasters, coffee makers, bbq's, hot plates and any other appliances that may be used for cooking purposes shall not be permitted in the barns. Electrical devices in good repair and properly maintained used in direct connection with the care of the animals may be exempt.
  108. Smoking including E-Cigarettes and Vapors is not permitted within the barn or livestock area, trailer areas, or in exhibits with sawdust or similar materials on the floor. Smoking will only be allowed in designated smoking areas.
  109. Fire hoses, fire extinguishers or other fire equipment shall not be used except in cases of emergency. These devices shall not be blocked or obstructed at any time.
  110. No dogs are allowed on the fairgrounds. Guide or Service dogs, dogs in competition or as part of an exhibit, entertainment program or demonstration and 4-H dog show entries are the only exceptions. Any dog found in the livestock barns will be subject to removal by Fair Security or Animal Control, and the exhibitor subject to disqualification and/or loss of premiums.
  111. **NO** motorized scooters, razor scooters, bicycles, skateboards or hover boards are allowed on the fairgrounds or in the livestock area.

## **Show Schedule, Arrival and Departure**

112. Each exhibitor shall be expected to show animals in accordance with the schedule for judging as printed in the Exhibitor Handbook or posted. Schedule is subject to change by Fair Management, and such changes will be posted or announced at the Livestock Office. Judging will not be delayed for exhibitors entering the show ring late. Any exhibit not presented promptly at the scheduled time will be ruled out and be disqualified from competition in the class in question.
113. All livestock exhibitors are required to have themselves and their animals available to parade or be presented in any special exhibit or exhibit areas, as requested by Fair Management.
114. All animals must be received and in place within the allotted time period listed on the schedule of events. No late arrivals will be accepted.
115. No animal will be released before the scheduled release time. Releases will be scheduled beginning at the time listed in the Exhibitor Guidebook. Schedule of releases to be determined by Fair personnel. Emergencies requiring an early release such as a sick or injured animal, may, at the discretion of Fair Management, require proof in the form of a veterinarian's certificate.

## **Gate & Vehicle Access**

116. Vehicles making deliveries to the livestock barn area or trailer areas from Tuesday through Sunday will have access from 5 am to 7 am. Please enter and exit through the Livestock Gate #8. Delivery vehicles must be unloaded and removed immediately. All vehicles must be off the grounds by 7 am.

## **Junior Livestock Auction**

117. The Yuba-Sutter Fair Livestock Auction is co-organized and co-coordinated by the Yuba-Sutter Fair Heritage Foundation and the Yuba-Sutter Fair Jr. Livestock Auction Committee, which serves under the direction of the Yuba-Sutter Fair. The Committee is composed of FFA Instructors, 4-H Leaders, the 4-H Program Representative and Community Members.
118. Limitation: Juniors who are members of a Yuba or Sutter County 4-H Club, Yuba or Sutter County FFA Chapter, Yuba or Sutter County Grange and/or Independent Exhibitors, who are residents of Yuba or Sutter County, may EXHIBIT and SELL only one (1) Market Animal (Beef, Sheep, Swine, Goat or Turkey) or one (1) Meat Pen of Rabbits or Poultry or one (1) Live

- Auction Vocational item and one (1) Bred Replacement Heifer; if they have not sold a market animal at a county or district fair in the same calendar year (from Fair to Fair) excluding the California State Fair and the California Youth Ag Expo.
119. Animals will be presented in the sale ring in the same manner they are presented in the show ring. Animals cannot go through Auction ring with anything other than Supreme Champion or Reserve Supreme Champion Flowers **provided by the fair**. (ABSOLUTELY NO PAINT, NO GLITTER, AND NO BOWS ALLOWED) Animals with paint or glitter will be disqualified from the sale. Bows will be required to be removed before entering the sale ring.
  120. Market Animals, Meat Pens, and Vocational/Industrial Projects receiving an award of Market Ready must be sold at the Auction.
  121. Each exhibitor must take his/her own animal or vocational project through the Auction Ring, no exception. Failure to do so will include forfeiture of awards, premiums and sale proceeds.
  122. Exhibitors must be present in the official Yuba-Sutter Fair uniform of their respective organization to sell their Market Animal, Meat Pen, Vocational Project or Bred Replacement Heifer.
  123. The exhibitor is responsible for having his/her animal in lot order to proceed through the Auction Ring. Animals and Vocational Projects not in place will be passed over and will not be sold through the auction but will be sold at market price with the 7% commission fees and any other admin fees deducted from the sale proceeds.
  124. Exhibitors are responsible for the care of their Market Animals until these animals are shipped. This means providing your Market Animal with feed and water Saturday night, Sunday morning and Sunday evening. Failure to do so will include forfeiture of awards, premiums and sale proceeds. Exhibitors are responsible for the care of the Bred Replacement Heifers until they are released from the fairgrounds.
  125. The Yuba-Sutter Fair Livestock Auction is co-organized and co-coordinated by the Yuba-Sutter Fair Heritage Foundation and the Yuba-Sutter Fair Jr. Livestock Auction Committee, which serves under the direction of the Yuba-Sutter Fair. The Committee is composed of FFA Advisors, 4-H Leaders, the 4-H Program Representative and Community Members.
  126. Sale Commission: A charge of 7% of the gross sale will be deducted from each seller's check to defray general operational costs of the Junior Livestock/Vocational Project Auction.
  127. Add-ons: Add-on's will be subject to a 7% commission fee. The minimum add-on amount required is \$20 per exhibitor/per add-on. Add-ons will be accepted at the fair office through the following Friday following the day of the sale. (this includes any add-on submitted by mail).
  128. Fee Deductions: Certain Fees dependent upon the species sold will be deducted from the seller's check for the Beef Council, Lamb Check-Off, National Pork Board Fee, and Brand Inspection.
  129. Auction Pictures: All exhibitors are required to have a picture taken by the fair's photographer in their official show uniform with their market animal/project that is to be sold in the auction. There will be a \$22 fee deducted from each exhibitor's check for the buyer's placard picture.
  130. Auction checks will be available within 60 days after the last day of the fair. Auction checks must be picked up and cashed by December 31<sup>st</sup>. Checks will be voided and not re-issued after December 31<sup>st</sup>. There will be a \$35.00 fee for stop payment if a replacement check is issued prior to December 31<sup>st</sup>.
  131. The Fair Office **must** receive a postage ready thank you note written to each sponsor of award(s) received, the buyer(s) and any add-on supporter(s) of the exhibitor's animal/vocational project(s) in order to release the proceeds from the Junior Livestock Auction. The Thank You Cards may be brought in prior to the Auction Checks being released.
  132. The Sale Order is determined by the exhibitor's placing in their respective class.
  133. The Sale of Champions will only include the Supreme Champion & Reserve Supreme Champion market animals from each specie, the Supreme Champion & Reserve Supreme Champion Bred Replacement Heifers, the Overall Champion & Reserve Champion 4-H and FFA Market animals from each specie, the Best of Show Vocational Projects and the Mark Lemenager Scholarship Animal.
  134. **NO** solicitation of buyers will be allowed on the day of the Jr. Livestock Auction.
  135. Exhibitors will only be paid up to the maximum pay weight that is listed for each specie. Exhibitors whose animal's that weigh more than the top pay weight, agree to these terms by

signing the Exhibitor Responsibility Form upon entering their animal for exhibit and sale at the fair.

136. No "re-sale" option will be available for swine, poultry, turkeys and rabbit lots.

137. LIVE PICKUP OPTION. The successful buyer of the sale lot has the option of selecting "Live Pickup" of the market animal. There will be an additional \$1000 surcharge for this option, and they must pay for the animal with cash or credit card by Saturday, June 27<sup>th</sup>, 2026, within 1 hour after the auction ends otherwise it will be loaded on truck and taken to be processed. If they choose this option the buyer must pick the animal up by Sunday, June 28<sup>th</sup>, 2026, by 6 pm.

# JUNIOR BEEF

## Quick Reference Entry Information



Please follow these steps to enter a Market Steer for the 2026 Yuba-Sutter Fair:  
**Complete your online entry by no later than FEBRUARY 22, 2026.**

ENTRY INFORMATION	DIVISION #	CLASS #
<b>Market Beef:</b> Entry Fee \$50.00; <b>Back-up Market Beef:</b> Entry Fee \$25.00		
Fair-time Minimum/Maximum Weight Requirements: 1100 to 1450 lbs. – No top weight		
4-H Black Colored Market Beef	406	1
4-H All Other Colored Market Beef	407	1
4-H Slick Shorn Market Beef	408	1
4-H Market Beef Backup	406/407/408	2
FFA Black Colored Market Beef	409	1
FFA All Other Colored Market Beef	410	1
FFA Slick Shorn Market Beef	411	1
FFA Market Beef Backup	409/410/411	2
<b>4-H Beef Showmanship – Entry Fee \$10.00</b>		
4-H Novice & Independent (age 9–13) (1st year of specie)	401	1
4-H Junior & Independent (age 9-13)	402	1
4-H Senior (age 14 & over)	403	1
<b>FFA Beef Showmanship – Entry Fee \$10.00</b>		
FFA Novice & Independent (age 14 & over) (1st year of specie)	404	1
FFA Advanced & Independent (age 14 & over)	405	1

### Did you complete your online entry?

- Login and complete exhibitor information
- Enter Showmanship
- Enter Market Class
- Be sure your Fair Ear Tag on Market Animals is accurate.
- Enter Breeding Class (If applicable)
- Enter all required information on Livestock entered
- Pay online and submit entries
- Print out receipt for your records
- Upload required photos of Livestock by entry deadline

#### Fair-time Arrival Dates & Times

##### Beef Cattle

**Sunday, June 21<sup>st</sup> 7:00 pm to 8:00 pm**

**Monday, June 22<sup>nd</sup> 5:00 am to 2:00 pm**

***All cattle must be in place by no later than 2:00***

#### Fair-time Weigh-In Date & Time

##### Market Beef

**Monday, June 22<sup>nd</sup>**

**3:00 pm to 5:00 pm**

# MARKET BEEF

**Entry Fee: \$50.00 per entry, Back-up Entry Fee: \$25 per entry**

## **Entry # Information:**

**DIVISION #406** - 4-H BLACK COLORED MARKET BEEF

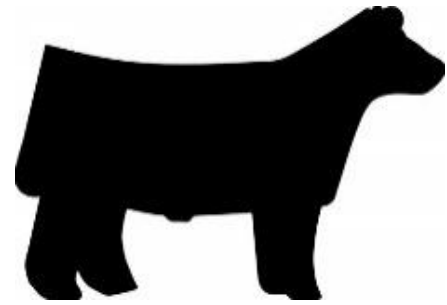
**DIVISION #407** - 4-H ALL OTHER COLORED MARKET BEEF

**DIVISION #408** - 4-H SLICK SHORN MARKET BEEF

**DIVISION #409** - FFA BLACK COLORED MARKET BEEF

**DIVISION #410** - FFA ALL OTHER COLORED MARKET BEEF

**DIVISION #411** - FFA SLICK SHORN MARKET BEEF



**CLASS #1** – MARKET BEEF

**CLASS #2** – BACKUP MARKET BEEF

**Danish System of Judging / No premiums offered per class**

## **Awards Offered:**

4-H Champion Black Colored & Reserve Champion Black Colored Market Beef & 3<sup>rd</sup> Overall

4-H Champion All Other Colored & Reserve Champion All Other Colored Market Beef & 3<sup>rd</sup> Overall

4-H Champion & Reserve Champion Slick Shorn Market Beef & 3<sup>rd</sup> Overall

4-H Grand Champion & Reserve Grand Champion Market Beef & 3<sup>rd</sup> Overall

FFA Champion Black Colored & Reserve Champion Black Colored Market Beef & 3<sup>rd</sup> Overall

FFA Champion All Other Colored & Reserve Champion All Other Colored Market Beef & 3<sup>rd</sup> Overall

FFA Champion & Reserve Champion Slick Shorn Market Beef & 3<sup>rd</sup> Overall

FFA Grand Champion & Reserve Grand Champion Market Beef & 3<sup>rd</sup> Overall

Supreme Champion & Reserve Supreme Champion Market Beef & 3<sup>rd</sup> Overall

## **How to Enter:**

- Enter online at [www.vsfair.com](http://www.vsfair.com) click ENTER THE FAIR.
- Online Entries close on **February 22, 2026**.

## **Guidelines:**

- See Livestock Schedule for receiving/release of livestock and Schedule of Events for the Fair.
- All Local and State Rules apply.
- Limit of one (1) market animal shown per exhibitor.
- Sale Weight: 1100 to 1450 pounds - No top weight.
- Black Colored Market Beef Classification – Solid Black or Black Colored with any White Spots.
- All Other Colored Market Beef Classification – Red, Cream Colored, Smokies, Yellow Roan, Blue Roan, White, Shorthorn, Hereford, etc.
- Color/Division Classifications will be verified and officially determined at the official weigh-in.
- Market Steers and Market Heifers qualify as "Market Beef" and will compete in the same class.
- Only 4-H Grand & Reserve Grand Champion, FFA Grand & Reserve Grand Champion, Supreme & Reserve Supreme Champions will sell in the Sale of Champions.
- Animals judged market ready must sell in the Jr. Livestock Auction.
- Animals judged NOT MARKET READY are required to be removed from the grounds on Friday, June 26, 2026 by 9 am.

## **Slick Shorn Guidelines:**

- All slick shorn market steers must be slick shorn to within 1/4" of length. (approximately 7 to 10 days prior to arrival at the fair)
- The entire steer must be shorn, excluding the leg area from knee & hock down, tail head, switch, ears and poll. The tailhead and leg hair can be fitted for the show.

**Arrival Deadline:** All livestock must be in place by 2 pm, Monday, June 22<sup>nd</sup>, 2026.

**Official Weigh-in, Classification & Health Check of Beef Entries:**

Weigh-in – Monday, June 22<sup>nd</sup>, 3 pm – 5 pm at the Beef Scale. All breeding cattle entries must be health checked at the scale staging area during the same allotted time period as the market beef animals. All Replacement Heifer entries must be health checked and weighed in during this time period. Weigh-in order will be in alphabetical order of all the Clubs & Chapters combined.

*Weigh-in Order: Barry 4-H, Bear River Wheatland FFA, Browns Valley 4-H, East Nicolaus FFA, Franklin 4-H, Hallwood 4-H, Lindhurst FFA, Live Oak 4-H, Live Oak FFA, Marysville FFA, Pleasant Grove 4-H, Sutter Buttes 4-H, Sutter FFA, River Valley FFA, Wheatland 4-H, Wheatland FFA, Yuba City FFA, Independent & Grange Exhibitors*

**LOAD-OUT** of Market Steers is Sunday, June 28<sup>th</sup> at 7 am at the loading ramp by Beef Barn.

## CLUB & CHAPTER OF MARKET BEEF

**Entry Fee: None**

**Entry # Information:**

**DIVISION #413** - 4-H MARKET BEEF GROUP OF 3

**DIVISION #414** - FFA MARKET BEEF GROUP OF 3

**CLASS #1** – CLUB OR CHAPTER GROUP OF 3 MARKET BEEF

**Awards Offered:**

4-H Champion & Reserve Champion Market Beef Group of 3  
FFA Champion & Reserve Champion Market Beef Group of 3

**How to Enter:**

- Fair Staff enters Clubs/Chapters that are eligible to compete in this class

**Guidelines:**

- All Local and State Rules apply.
- Limit of one (1) entry per class per club/chapter.

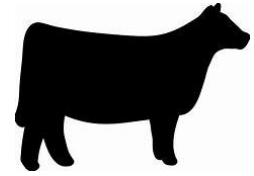
# BRED REPLACEMENT HEIFERS

**Entry Fee: \$50.00 per entry**

## **Entry # Information:**

**DIVISION #415** – 4-H & FFA BRED BEEF REPLACEMENT HEIFER

**CLASS #1** – BRED REPLACEMENT HEIFER      Required Calving Date: August 1<sup>st</sup>, 2026 thru December 31<sup>st</sup>, 2026



**Danish System of Judging** - No premiums offered per class

## **Awards Offered:**

- Supreme Champion Replacement Heifer
- Reserve Supreme Champion Replacement Heifer

## **How to Enter:**

- Enter online at [www.vsfair.com](http://www.vsfair.com) click ENTER THE FAIR.
- Online Entries close on **February 22, 2026**.

## **Guidelines:**

- See Livestock Schedule for receiving/release of livestock and Schedule of Events for the Fair.
- All Local and State Rules apply.
- Limit of one (1) Replacement Heifer shown per exhibitor.
- 4-H & FFA will show together
- Classes will be sorted by weight

## **Member Eligibility**

To be eligible for this Beef Replacement Heifer Project the exhibitor must be a member in good standing of a 4-H Club, FFA Chapter, Grange Chapter in Yuba or Sutter counties, or be a qualified Independent Junior Exhibitor from Yuba or Sutter counties.

## **Heifer Eligibility**

Registered or grade beef replacement heifers are eligible projects. Grade heifers must be without horns. The sire and dam of the heifer must be of a beef breed. If an exhibitor declares that the heifer is registered, the registration papers must be signed off and submitted to the Livestock Office before the heifer will be allowed to sell. Heifers must be bred and purchased from a breeder in Yuba, Sutter, Butte, Colusa, Placer, Nevada, Tehama, Glenn, Yolo or Sacramento County.

The age limit for a heifer is a minimum of 15 months and a maximum of 30 months on the opening day of the fair. Heifers must weigh a minimum of 900 pounds at the weigh-in during the fair and be bred to calve between August 1 thru December 31. The exhibitor is required to provide the fair staff at the scales the paperwork confirmed pre-check performed by a vet or professional A.I. Technician within 10 days of the first day of the fair. Those heifers that do not meet criteria will be disqualified from show competition and immediately released from the fairgrounds.

## **Ownership Requirements and Project Agreement**

The project members must have ownership of their heifer no later than 120 days before fair. Heifers must be entered and tagged by the entry deadline date to be eligible. The *original* Bill of Sale and brand inspection must be retained by the exhibitor and presented to the State Brand Inspector at the Fair.

## **Breeding and Project Management**

Heifers must be bred to calve between August 1<sup>st</sup> thru December 31<sup>st</sup>, 2026. Heifers that are not bred within the specified calving times will be disqualified from show competition. Heifers may be bred naturally, or by artificial insemination. They should be bred to bulls with low birth weights in order to reduce difficulty in calving. It is important that members have dates written down as to when the heifer was exposed to that bull and any data that could be beneficial to the potential buyer.

### **Health**

At the start of the project, members should seek advice from a local veterinarian about preventing diseases such as Leptospirosis, Vibriosis, Anaplasmosis, and Brucellosis. State law requires that beef heifers over twelve (12) months of age show evidence of the calfhood brucellosis vaccination if they are sold within the state of California for breeding purposes. Therefore, it is mandatory that the brucellosis ear tag number (orange metal clip number) and tattoo number be entered on the entry form. All heifers will be checked by the veterinarian upon arrival on the Fairgrounds and those heifers having no tattoo shall be disqualified from show competition.

### **Judging**

The Danish System of Judging will be used at the Fair, giving an exhibitor three (3) possible group placings; Purple, Blue and Red. Heifers awarded purple and blue ribbons in show competition will qualify for the Beef Replacement Heifer sale held during the Fair. Heifers that receive a red ribbon do not qualify for the sale and will not be allowed to sell in the Replacement Heifer Sale. Heifers that qualify for the sale are not required to sell, but the exhibitor must inform the livestock office within one hour following the heifer show in order to be removed from the sale order. The Supreme & Reserve Supreme Champion heifers must sell in the Replacement Heifer Sale.

### **Replacement Heifer Sale**

The Bred Replacement Heifers will sell as "live" lots during the Junior Livestock Auction. An exhibitor may exhibit and sell only one (1) beef replacement heifer per year. Replacement Heifer exhibitors will also be allowed to exhibit and sell one (1) market animal at the fair. A commission charge of 7% will be deducted from the sale proceeds of the replacement heifer. If a bred heifer calves during the fair and has qualified for the sale, she will be eligible to be sold with the calf by her side provided that the calf is healthy and the heifer is controllable. The decision will be made by fair management.

### **Release of Replacement Heifers**

The replacement heifers sold in the sale will be released as a "Live Lot" to the buyer on Sunday during the scheduled release time. All Replacement Heifers must be paid in full in order to obtain a release form from the livestock office.

# BREEDING BEEF

Entry Fee: \$10.00 per entry

## Entry # Information:

**DIVISION #417 - REGISTERED BRITISH BREEDS**  
**DIVISION #418 - REGISTERED AOB BREEDS**  
**DIVISION #419 - GRADE (NON-REGISTERED) BEEF CATTLE**

### BULLS - (ALL REGISTERED BULLS WILL SHOW TOGETHER IN DIVISION 418.)

<b>CLASS #1</b> - JUNIOR/SENIOR BULL CALF	09/01/25 - 05/01/26
<b>CLASS #2</b> - JUNIOR/SUMMER YEARLING	01/01/25 - 08/31/25
<b>CLASS #3</b> - SENIOR YEARLING	03/01/24 - 12/31/24

### FEMALES

<b>CLASS #4</b> - JUNIOR HEIFER CALF	01/01/26 - 02/28/26
<b>CLASS #5</b> - SUMMER HEIFER CALF	03/01/26 - 05/01/26
<b>CLASS #6</b> - SENIOR HEIFER CALF	09/01/25 - 12/31/25
<b>CLASS #7</b> - JUNIOR YEARLING	01/01/25 - 03/30/25
<b>CLASS #8</b> - SUMMER YEARLING	04/01/25 - 08/31/25
<b>CLASS #9</b> - SENIOR YEARLING	03/01/24 - 12/31/24
<b>CLASS #10</b> - COW/CALF PAIR - 2 YEARS	09/01/23 - 08/31/24
<b>CLASS #11</b> - COW/CALF PAIR - MATURE	Prior to 09/01/2023

### GROUPS

**CLASS #12** - PAIR OF FEMALES - Two females owned & exhibited by the exhibitor  
**CLASS #13** - YOUNG HERD - One (1) bull, two (2) heifers must be owned and bred by the exhibitor

**Premiums Offered:** First: \$30.00 Second: \$20.00 Third: \$15.00

### **Awards Offered Division Champions:**

Champion & Reserve Champion Registered Heifer	Champion & Reserve Champion Registered Bull
Champion & Reserve Champion Grade Heifer	Champion & Reserve Champion Grade Bull
Supreme & Reserve Supreme Champion Bull	Supreme & Reserve Supreme Champion Heifer

### **How to Enter:**

- Enter online at [www.vsfair.com](http://www.vsfair.com) click ENTER THE FAIR.
- Online Entries close on **May 1, 2026**.

### **Guidelines:**

- See Livestock Schedule for receiving/release of livestock and Schedule of Events for the Fair.
- All Local and State Rules apply.
- Limit of Six (6) breeding animals per exhibitor.

# BRED & OWNED BREEDING BEEF

Entry Fee: \$10.00 per entry

## Entry # Information:

**DIVISION #420** - BRED AND OWNED BREEDING BEEF

**CLASS #1** - BULL

**CLASS #2** - FEMALE

**Premiums Offered:**      First: \$20.00                      Second: \$15.00                      Third: \$10.00

## **Awards Offered:**

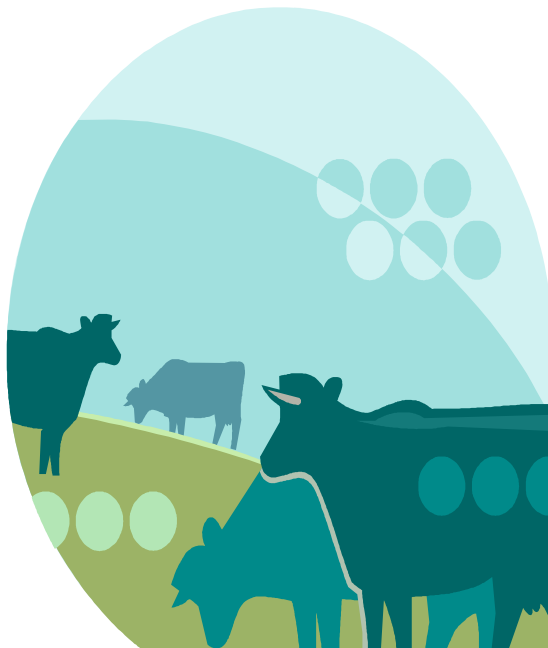
Champion & Reserve Champion Bred & Owned Breeding Bull  
Champion & Reserve Champion Bred & Owned Breeding Female

## **How to Enter:**

- Enter online at [www.vsfair.com](http://www.vsfair.com) click ENTER THE FAIR.
- Online Entries close on **May 1, 2026**.

## **Guidelines:**

- See Livestock Schedule for receiving/release of livestock and Schedule of Events for the Fair.
- All Local and State Rules apply.
- This award will be given to the exhibitor with a registered animal that they bred and currently own. They must have owned the dam at the time of the animal's conception and the exhibitor must have provided primary care for the animal from birth through the fair.
- 4-H and FFA will compete together.
- Animals must have been shown in a Registered Breeding Class.
- All breeds will show together.
- Must complete the breeder information at the time of online entry.



# BEEF SHOWMANSHIP

**Entry Fee: \$10.00 per entry**

**Entry # Information:**

**DIVISION #401** - 4-H NOVICE SHOWMANSHIP

**DIVISION #402** - 4-H JUNIOR SHOWMANSHIP

**DIVISION #403** - 4-H SENIOR SHOWMANSHIP

**DIVISION #404** - FFA NOVICE SHOWMANSHIP

**DIVISION #405** - FFA ADVANCED SHOWMANSHIP

**CLASS #1** – BEEF SHOWMANSHIP

**Premiums Offered:**     First: \$35.00     Second: \$25.00     Third: \$15.00

**Awards Offered:**

- 4-H Champion & Reserve Champion Novice Beef Showman
- 4-H Champion & Reserve Champion Junior Beef Showman
- 4-H Champion & Reserve Champion Senior Beef Showman
- FFA Champion & Reserve Champion Novice Beef Showman
- FFA Champion & Reserve Champion Advanced Beef Showman

**How to Enter:**

- Enter online at [www.vsfair.com](http://www.vsfair.com) click ENTER THE FAIR.
- Online Entries close on **May 1, 2026**.
- Showmanship must be pre-entered. No entry available at ringside.

**Guidelines:**

- See Livestock Schedule for receiving/release of livestock and Schedule of Events for the Fair.
- All Local and State Rules apply.
- Competition is open to all Junior Exhibitors that reside in Yuba and Sutter County OR are a member of a Yuba-Sutter 4-H, FFA and Grange program or a registered independent only.

**4-H Showmanship Definitions:**

- Novice: Those exhibitors who have never shown in any prior Beef Showmanship class at any county, district or state fair. 4-H Spring Fair and/or Primary Showmanship do not qualify as prior showmanship experience. First and second place winners from the Novice class may move to the Junior or Senior class, providing the winner is of the correct age for the class.
- Junior: Those exhibitors thirteen (13) years of age and under prior to January 1, 2026. Junior winners do not advance to the Senior division. There is a Junior Master Showmanship Competition for Junior Exhibitors.
- Senior: Those exhibitors fourteen (14) years of age and older prior to January 1, 2026.

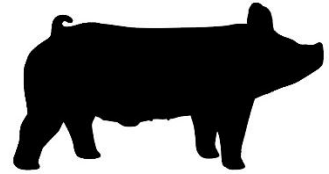
**FFA Showmanship Definitions:**

Novice: Those exhibitors who have never shown in any prior 4-H or FFA Beef Showmanship class at any other county, district or state fair. The first and second place winner in the Novice showmanship class may compete in the Advanced Showmanship

# JUNIOR SWINE

## Quick Reference Entry Information

Please follow these steps to enter a Market Hog for the 2026 Yuba-Sutter Fair:  
**Complete your online entry by no later than APRIL 24, 2026.**



ENTRY INFORMATION	DIVISION #	CLASS #
<b>Market Hog: Entry Fee \$50.00; Back-up Market Swine: Entry Fee \$25.00</b>		
Fair-time Minimum/Maximum Weight Requirements: 220 to 280 lbs. – 300 lbs. top weight		
4-H Market Gilt	426	1
4-H Market Barrow	427	1
4-H Market Gilt Backup	426	2
4-H Market Barrow Backup	427	2
FFA Market Gilt	428	1
FFA Market Barrow	429	1
FFA Market Gilt Backup	428	2
FFA Market Barrow Backup	429	2
<b>4-H Swine Showmanship – Entry Fee \$10.00</b>		
4-H Novice & Independent (age 9–13) (1st year of specie)	421	1
4-H Junior & Independent (age 9-13)	422	1
4-H Senior (age 14 & over)	423	1
<b>FFA Swine Showmanship – Entry Fee \$10.00</b>		
FFA Novice & Independent (age 14 & over) (1st year of specie)	424	1
FFA Advanced & Independent (age 14 & over)	425	1

### Did you complete your online entry?

- Login and complete exhibitor information
- Enter a Market Class
- Enter a Showmanship Class
- Be sure your Fair Ear Tag on Market Animals is accurate
- Enter Breeding or other Class(es) that are applicable
- Enter all required information on Livestock entered
- Pay online and submit entries
- Print out receipt for your records
- Upload required photos of your animal by the entry deadline.

#### Fair-time Arrival Date & Time

##### **Swine**

**Sunday, June 21<sup>st</sup> 8:00 am to 2:00 pm**

**All Swine must be in place by no later than 2:00.**

#### Fair-time Weigh-In Date & Time

##### **Market Hogs**

**Sunday, June 21<sup>st</sup> 8:00 am to 2:00 pm**

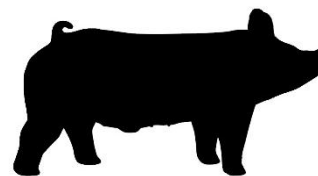
All Swine will be weighed and checked in upon arrival & unloading.

# MARKET SWINE

**Entry Fee: \$50.00 per entry, Back-up Entry Fee: \$25 per entry**

## **Entry # Information:**

**DIVISION #426** - 4-H MARKET GILT  
**DIVISION #427** - 4-H MARKET BARROW  
**DIVISION #428** - FFA MARKET GILT  
**DIVISION #429** - FFA MARKET BARROW



**CLASS #1** – SINGLE MARKET HOG  
**CLASS #2** – BACKUP MARKET HOG

**Danish System of Judging** - No premiums offered per class

## **Awards Offered:**

4-H Champion & Reserve Champion Market Gilt & 3<sup>rd</sup> Overall  
4-H Champion & Reserve Champion Market Barrow & 3<sup>rd</sup> Overall  
4-H Grand Champion & Reserve Grand Champion Market Hog & 3<sup>rd</sup> Overall  
FFA Champion & Reserve Champion Market Gilt & 3<sup>rd</sup> Overall  
FFA Champion & Reserve Champion Market Barrow & 3<sup>rd</sup> Overall  
FFA Grand Champion & Reserve Grand Champion Market Hog & 3<sup>rd</sup> Overall  
Supreme Champion & Reserve Supreme Champion Market Hog & 3<sup>rd</sup> Overall

## **How to Enter:**

- Enter online at [www.vsfair.com](http://www.vsfair.com) click ENTER THE FAIR.
- Online Entries close on **April 24, 2026**.

## **Guidelines:**

- See Livestock Schedule for receiving/release of livestock and Schedule of Events for the Fair.
- All Local and State Rules apply to this Fair.
- Limit of one (1) market animal shown per exhibitor.
- Sale Weight: 220-280 pounds - Top live weight 300 pounds. Animals weighing over 300 lbs. will be allowed to show in showmanship if it is the only animal entered into the fair and will leave with release of all animals on Sunday.
- Division Classifications will be verified and officially determined at the official weigh-in.
- Only 4-H Grand & Reserve Grand Champion, FFA Grand & Reserve Grand Champion, Supreme & Reserve Supreme Champions will sell in the Sale of Champions.
- Animals judged market ready must sell in the Jr. Livestock Auction.
- Animals judged NOT MARKET READY are required to be removed from the grounds on Friday, June 26, 2026 by 9 am.

## **Official Weigh-in, Classification & Health Check of Swine Entries:**

Weigh-in – Sunday, June 21<sup>st</sup>, 8 am – 1 pm at the Hog Scale upon unloading the animals. All swine entries must be Health Checked upon unloading the animal. Clubs & Chapters will be scheduled within allotted time periods for delivery of animals. Arrival times will be posted at a later date.

# CLUB & CHAPTER GROUP OF MARKET SWINE

**Entry Fee: None**

## **Entry # Information:**

**DIVISION #431** - 4-H MARKET SWINE PEN OF 3

**DIVISION #432** - FFA MARKET SWINE PEN OF 3

**CLASS #1** – CLUB & CHAPTER PEN OF 3 MARKET SWINE

## **Awards Offered:**

4-H Champion & Reserve Champion Market Swine Group of 3  
FFA Champion & Reserve Champion Market Swine Group of 3

## **How to Enter:**

- Fair Staff enters Clubs/Chapters that are eligible to compete in this class..

## **Guidelines:**

- All Local and State Rules apply.
- Limit of one (1) entry per class per club/chapter.

# BREEDING SWINE

**Entry Fee: \$10.00 per entry**

## **Entry # Information:**

**DIVISION #433** – BREEDING SWINE

**CLASS #1** – LIGHT COLORED GILT/SOW (Classes will be determined and sorted by weight)

**CLASS #2** – DARK COLORED GILT/SOW (Classes will be determined and sorted by weight)

**Premiums Offered:**      First: \$20.00      Second: \$15.00      Third: \$10.00

## **Awards Offered:**

Champion Breeding Female  
Reserve Champion Breeding Female

## **How to Enter:**

- Enter online at [www.ysfair.com](http://www.ysfair.com) click ENTER THE FAIR.
- Online Entries close on **May 1, 2026**.

## **Guidelines:**

- See Livestock Schedule for receiving/release of livestock and Schedule of Events for the Fair.
- All Local and State Rules apply.
- Limit (2) Breeding Swine animals per exhibitor.
- Must be weighed and health checked at the time of the swine weigh-in.
- Gilts and Sows ONLY. No Boars Allowed.
- **Gilts entered as backup animal may not be entered in this class.**

# SWINE SHOWMANSHIP

Entry Fee: \$10.00 per entry

## Entry # Information:

**DIVISION #421** - 4-H NOVICE SHOWMANSHIP  
**DIVISION #422** - 4-H JUNIOR SHOWMANSHIP  
**DIVISION #423** - 4-H SENIOR SHOWMANSHIP  
**DIVISION #424** - FFA NOVICE SHOWMANSHIP  
**DIVISION #425** - FFA ADVANCED SHOWMANSHIP



## **CLASS #1** - SWINE SHOWMANSHIP

Premiums Offered:    First: \$35.00    Second: \$25.00    Third: \$15.00

### Awards Offered:

4-H Champion & Reserve Champion Novice Swine Showman  
4-H Champion & Reserve Champion Junior Swine Showman  
4-H Champion & Reserve Champion Senior Swine Showman  
FFA Champion & Reserve Champion Novice Swine Showman  
FFA Champion & Reserve Champion Advanced Swine Showman

### How to Enter:

- Enter online at [www.ysfair.com](http://www.ysfair.com) click ENTER THE FAIR.
- Online Entries close on **May 1, 2026**.
- Showmanship must be pre-entered. No entry available at ringside.

### Guidelines:

- See Livestock Schedule for receiving/release of livestock and Schedule of Events for the Fair.
- All Local and State Rules apply.
- Competition is open to all Junior Exhibitors that reside in Yuba and Sutter County OR are a member of a Yuba-Sutter 4-H, FFA or Grange program or a registered Independent only.

### 4-H Showmanship Definitions:

- Novice: Those exhibitors who have never shown in any prior Swine Showmanship class at any county, district or state fair. 4-H Spring Fair and/or Primary Showmanship do not qualify as prior showmanship experience. First and second place winners from the Novice class may move to the Junior or Senior class, providing the winner is of the correct age for the class.
- Junior: Those exhibitors thirteen (13) years of age and under prior to January 1, 2026. Junior winners do not advance to the Senior division. There is a Junior Master Showmanship Competition for Junior Exhibitors.
- Senior: Those exhibitors fourteen (14) years of age and older prior to January 1, 2026.

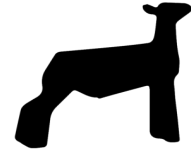
### FFA Showmanship Definitions:

- Novice: Those exhibitors who have never shown in any prior 4-H or FFA Swine Showmanship class at any other county, district or state fair. The first and second place winner in the Novice showmanship class may compete in the Advanced Showmanship Class for cash awards.
- Advanced: Those exhibitors who have had prior 4-H or FFA Swine Showmanship experience.

# JUNIOR SHEEP

## Quick Reference Entry Information

Please follow these steps to enter a Market Lamb for the 2026 Yuba-Sutter Fair:  
**Complete your online entry by no later than APRIL 24, 2026.**



ENTRY INFORMATION	DIVISION #	CLASS #
<b>Market Lamb: Entry Fee \$50.00; Back-up Market Lamb: Entry Fee \$25.00</b>		
Fair-time Minimum/Maximum Weight Requirements: 100 to 160 lbs. – No top weight		
4-H Speckle/Brockle/White Face Market Lamb	439	1
4-H Natural colored market lamb	440	1
4-H Black Face Market Lamb	441	1
4-H Speckle/Brockle/White Market Lamb Backup	439	2
4-H Natural Colored Market Lamb Backup	440	2
4-H Black Face Market Lamb Backup	441	2
FFA Speckle/Brockle/White Market Lamb	442	1
FFA Natural Colored Market Lamb	443	1
FFA Black Face Market Lamb	444	1
FFA Speckle/Brockle/White Market Lamb Backup	442	2
FFA Natural Colored Market Lamb Backup	443	2
FFA Black Face Market Lamb Backup	444	2
<b>4-H Sheep Showmanship – Entry Fee \$10.00</b>		
4-H Novice & Independent (age 9–13) (1st year of specie)	434	1
4-H Junior & Independent (age 9-13)	435	1
4-H Senior (age 14 & over)	436	1
<b>FFA Sheep Showmanship – Entry Fee \$10.00</b>		
FFA Novice & Independent (age 14 & over) (1st year of specie)	437	1
FFA Advanced & Independent (age 14 & over)	438	1

### Did you complete your online entry?

- Login and complete exhibitor information
- Enter a Showmanship Class
- Enter a Market Class
- Be sure your Fair Ear Tag on Market Animals is accurate
- Enter Breeding or other Class(es) that are applicable
- Enter all required information on Livestock entered
- Pay online and submit entries
- Print out receipt for your records
- Upload required photos of your animal by entry deadline

Fair-time Arrival Date & Time  
**Sheep**  
**Sunday, June 21<sup>st</sup> 7:00 pm to 8:00 pm**  
**Monday, June 22<sup>nd</sup> 5:00 am to 2:00 pm**  
*All Sheep must be in place by no later than 2:00*

Fair-time Weigh-In Date & Time  
**Market Lamb**  
**Monday, June 22<sup>nd</sup>**  
**3:00 pm to 5:00 pm**  
**Sheep Scale**

# MARKET LAMBS

**Entry Fee: \$50.00 per entry, Back-up Entry Fee: \$25 per entry**

## **Entry # Information:**

**DIVISION #439** - 4-H SPECKLE/BROCKLE/WHITE FACE MARKET LAMBS  
**DIVISION #440** - 4-H NATURAL COLORED MARKET LAMBS  
**DIVISION #441** - 4-H BLACK FACE MARKET LAMBS  
**DIVISION #442** - FFA SPECKLE/BROCKLE/WHITE FACE MARKET LAMBS  
**DIVISION #443** – FFA NATURAL COLORED MARKET LAMBS  
**DIVISION #444** - FFA BLACK FACE MARKET LAMBS



**CLASS #1** – SINGLE MARKET LAMB

**CLASS #2** – BACKUP MARKET LAMB

**Danish System of Judging** - No Premiums Offered

## **Awards Offered:**

4-H Champion & Reserve Champion Speckle/Brockle/White Face Market Lamb & 3<sup>rd</sup> Overall  
4-H Champion & Reserve Champion Natural Colored Market Lamb & 3<sup>rd</sup> Overall  
4-H Champion & Reserve Champion Black Face Market Lamb & 3<sup>rd</sup> Overall  
4-H Grand Champion & Reserve Grand Champion Market Lamb & 3<sup>rd</sup> Overall  
FFA Champion & Reserve Champion Speckle/Brockle/White Face Market Lamb & 3<sup>rd</sup> Overall  
FFA Champion & Reserve Champion Natural Colored Market Lamb & 3<sup>rd</sup> Overall  
FFA Champion & Reserve Champion Black Face Market Lamb & 3<sup>rd</sup> Overall  
FFA Grand Champion & Reserve Grand Champion Market Lamb & 3<sup>rd</sup> Overall  
Supreme Champion & Reserve Supreme Champion Market Lamb & 3<sup>rd</sup> Overall

## **How to Enter:**

- Enter online at [www.vsfair.com](http://www.vsfair.com) click ENTER THE FAIR.
- Online Entries close on **April 24 2026**.

## **Guidelines:**

- See Livestock Schedule for receiving/release of livestock and Schedule of Events for the Fair.
- All Local and State Rules apply.
- Limit of one (1) market animal shown per exhibitor.
- Sale Weight: 100 -160 pounds – No top weight
- Color/Division Classifications will be verified and officially determined at the official weigh-in.
- All market lambs must be shorn within 7 days of weigh in. All market lambs not shorn within that time period will be prohibited from weighing in.
- Only 4-H Grand & Reserve Grand Champion, FFA Grand & Reserve Grand Champion, Supreme & Reserve Supreme Champions will sell in the Sale of Champions.
- Animals judged market ready must sell in the Jr. Livestock Auction.
- Animals judged NOT MARKET READY are required to be removed from the grounds on Friday, June 26, 2026 by 9:00 am.

**Arrival Deadline:** All livestock must be in place by 2 pm, Monday, June 22<sup>nd</sup>, 2026.

## **Official Weigh-in, Classification & Health Check of Sheep Entries.**

Weigh-in – Monday, June 22<sup>nd</sup>, 3 pm – 5 pm at the Sheep Scale. All Wether Sire & Dam entries must be weighed in and will take place at the conclusion of the market lamb weigh-in. All breeding sheep will be health checked at the scale staging area. Weigh-ins will take place at the scales in the Sheep Barn. Weigh-in order will be in alphabetical order of all the Clubs & Chapters combined.

*Weigh-in Order: Barry 4-H, Bear River Wheatland FFA, Browns Valley 4-H, East Nicolaus FFA, Franklin 4-H, Hallwood 4-H, Lindhurst FFA, Live Oak 4-H, Live Oak FFA, Marysville FFA, Pleasant Grove 4-H, Sutter Buttes 4-H, Sutter FFA, River Valley FFA, Wheatland 4-H, Wheatland FFA, Yuba City FFA, Independent & Grange Exhibitors*

**LOAD-OUT** of Market Lambs is Sunday, June 28<sup>th</sup>, 2026. Move to Load-out pens located at the Show Pavilion between 1 pm and 2 pm.

# CLUB & CHAPTER GROUP OF MARKET LAMBS

**Entry Fee: None**

## **Entry # Information:**

**DIVISION #446** - 4-H MARKET LAMB PEN OF 3

**DIVISION #447** - FFA MARKET LAMB PEN OF 3

**CLASS #1** – CLUB & CHAPTER MARKET LAMB PEN OF 3

## **Awards Offered:**

4-H Champion & Reserve Champion Market Lambs Group of 3

FFA Champion & Reserve Champion Market Lambs Group of 3

## **How to Enter:**

- Fair Staff enters Clubs/Chapters that are eligible to compete in this class.

## **Rules:**

- All Local and State Rules apply.
- Limit of one (1) entry per class per club/chapter.

# BREEDING SHEEP

**Entry Fee: \$10.00 per entry**

## **Entry # Information:**

**DIVISION #448** - REGISTERED MEAT BREEDS

**DIVISION #449** - REGISTERED WOOL BREEDS

## **RAMS**

**CLASS #1** – YEARLING 09/1/24 – 08/31/25

**CLASS #2** – FALL LAMB 09/1/25 – 12/31/25

**CLASS #3** – SPRING LAMB 01/1/26 – 05/01/26

**CLASS #4** – PAIR OF RAM LAMBS – Two ram lambs owned by the exhibitor

## **EWES**

**CLASS #6** – YEARLING 09/1/24– 08/31/25

**CLASS #7** – PAIR OF YEARLING EWES

**CLASS #8** – FALL LAMB 09/1/25 – 12/31/25

**CLASS #9** – SPRING LAMB 01/1/26 – 05/01/26

**CLASS #10** – PAIR OF EWE LAMBS – Two ewe lambs owned by the exhibitor

## **GROUPS**

**CLASS #11** – YOUNG FLOCK – one (1) ram lamb, two (2) ewe lambs owned by the exhibitor

**CLASS #12** – FLOCK – one (1) yearling or ram lamb, two (2) yearling ewes and two (2) ewe lambs

**CLASS #13** – GET OF SIRE – Four (4) animals sired by the same sire

**DIVISION #450** – WETHER DAM/WETHER SIRE

Classes to be determined by weight. Check Schedule for weigh-in time.

## **RAMS**

**CLASS #1** - RAM (Classes will be determined and sorted by weight.)

**CLASS #2** – PAIR OF RAMS - Two rams owned by the exhibitor



## EWES

**CLASS #3** – EWE (Classes will be determined and sorted by weight.)

**CLASS #4** – PAIR OF EWES – Two ewes owned by the exhibitor

**Premiums Offered:** First: \$20.00 Second: \$15.00 Third: \$10.00

### **Division Champions:**

Champion & Reserve Champion Meat Ram

Champion & Reserve Champion Wool Ram

Champion & Reserve Champion Wether Sire Ram

Supreme & Res Supreme Champion Ram

Champion & Reserve Champion Meat Ewe

Champion & Reserve Champion Wool Ewe

Champion & Reserve Champion Wether Dam Ewe

Supreme & Res Supreme Champion Ewe

### **How to Enter:**

- Enter online at [www.ysfair.com](http://www.ysfair.com) click ENTER THE FAIR.
- Online Entries close on **May 1, 2026**.

### **Guidelines:**

- See Livestock Schedule for receiving/release of livestock and Schedule of Events for the Fair.
- All Local and State Rules apply.
- Limit of 2 (two) Breeds per exhibitor (6 animals per breed).
- **Wether Dam Ewes entered as backup animal may not be entered in this class.**

## **BRED & OWNED REGISTERED BREEDING SHEEP**

**Entry Fee \$10.00 per entry**

### **Entry # Information:**

**DIVISION #451** - BRED AND OWNED SHEEP (Must be Registered)

**CLASS #1** – RAM

**CLASS #2** – EWE

**Premiums Offered:** First: \$20.00 Second: \$15.00 Third: \$10.00

### **Awards Offered:**

Champion & Reserve Champion Bred & Owned Breeding Ram

Champion & Reserve Champion Bred & Owned Breeding Ewe

### **How to Enter:**

- Enter online at [www.ysfair.com](http://www.ysfair.com) click ENTER THE FAIR.
- Online Entries close on **May 1, 2026**.

### **Guidelines:**

- See Livestock Schedule for receiving/release of livestock and Schedule of Events for the Fair.
- All Local and State Rules apply.
- This award will be given to the exhibitor with a registered animal that they bred and currently own. They must have owned the dam at the time of the animal's conception and the exhibitor must have provided primary care for the animal from birth through the fair.
- 4-H and FFA will compete together.
- Animals must have been shown in a Registered Breeding Sheep Class.
- Animals entered in the Wether Sire and Dam Division are not eligible to show in this division.
- All breeds will show together.
- Must complete the breeder information at the time of online entry.

# SHEEP SHOWMANSHIP

**Entry Fee: \$10.00 per entry**

## **Entry # Information:**

**DIVISION #434** - 4-H NOVICE SHOWMANSHIP

**DIVISION #435** - 4-H JUNIOR SHOWMANSHIP

**DIVISION #436** - 4-H SENIOR SHOWMANSHIP

**DIVISION #437** - FFA NOVICE SHOWMANSHIP

**DIVISION #438** - FFA ADVANCED SHOWMANSHIP

**CLASS #1** – SHEEP SHOWMANSHIP

**Premiums Offered:**      First: \$35.00      Second: \$25.00      Third: \$15.00

## **Awards Offered:**

4-H Champion & Reserve Champion Novice Sheep Showman

4-H Champion & Reserve Champion Junior Sheep Showman

4-H Champion & Reserve Champion Senior Sheep Showman

FFA Champion & Reserve Champion Novice Sheep Showman

FFA Champion & Reserve Champion Advanced Sheep Showman

## **How to Enter:**

- Enter online at [www.yvsfair.com](http://www.yvsfair.com) click ENTER THE FAIR.
- Online Entries close on **May 1, 2026**.
- Showmanship must be pre-entered. No entry available at ringside

## **Guidelines:**

- See Livestock Schedule for receiving/release of livestock and Schedule of Events for the Fair.
- All Local and State Rules apply.
- Competition is open to all Junior Exhibitors that reside in Yuba and Sutter County OR are a member of a Yuba-Sutter 4-H, FFA or Grange program or a registered Independent only.

### **4-H Showmanship Definitions:**

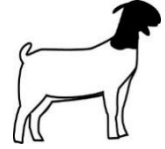
- Novice: Those exhibitors who have never shown in any prior Sheep Showmanship class at any county, district or state fair. 4-H Spring Fair and/or Primary Showmanship do not qualify as prior showmanship experience. First and second place winners from the Novice class may move to the Junior or Senior class, providing the winner is of the correct age for the class.
- Junior: Those exhibitors thirteen (13) years of age and under prior to January 1, 2026. Junior winners do not advance to the Senior division. There is a Junior Master Showmanship Competition for Junior Exhibitors.
- Senior: Those exhibitors fourteen (14) years of age and older prior to January 1, 2026.

### **FFA Showmanship Definitions:**

- Novice: Those exhibitors who have never shown in any prior 4-H or FFA Sheep Showmanship class at any other county, district or state fair. The first and second place winner in the Novice showmanship class may compete in the Advanced Showmanship Class for cash awards.
- Advanced: Those exhibitors who have had prior 4-H or FFA Sheep Showmanship experience.

# JUNIOR MEAT GOATS

## Quick Reference Entry Information



Please follow these steps to enter a Market Meat Goat for the 2026 Yuba-Sutter Fair:

**Complete your online entry by no later than APRIL 24, 2026.**

ENTRY INFORMATION	DIVISION #	CLASS #
<b>Market Meat Goat: Entry Fee \$50.00; Back-up Market Goat: Entry Fee \$25.00</b>		
Fair-time Minimum/Maximum Weight Requirements: 65 to 115 lbs. – No top weight		
4-H Market Meat Goat	457	1
4-H Market Meat Goat Backup	457	2
FFA Market Meat Goat	458	1
FFA Market Meat Goat Backup	458	2
<b>4-H Meat Goat Showmanship – Entry Fee \$10.00</b>		
4-H Novice & Independent (age 9–13) (1st year of specie)	452	1
4-H Junior & Independent (age 9-13)	453	1
4-H Senior (age 14 & over)	454	1
<b>FFA Meat Goat Showmanship – Entry Fee \$10.00</b>		
FFA Novice & Independent (age 14 & over) (1st year of specie)	455	1
FFA Advanced & Independent (age 14 & over)	456	1

### Did you complete your online entry?

- Login and complete exhibitor information
- Enter a Showmanship Class
- Enter a Market Class
- Be sure your Fair Ear Tag on Market Animals is accurate
- Enter Breeding or other Class(es) that are applicable
- Enter all required information on Livestock entered
- Pay online and submit entries
- Print out receipt for your records
- Upload required photos of your animal by entry deadline

### Fair-time Arrival Date & Time

#### **Meat Goats**

**Sunday, June 21<sup>st</sup> 7:00 pm to 8:00 pm**

**Monday, June 22<sup>nd</sup> 5:00 am to 2:00 pm**

*All Goats must be in place by no later than 2:00 pm*

### Fair-time Weigh-In Date & Time

#### **Market Meat Goats**

**Monday, June 22<sup>nd</sup>**

**5:00 pm to 6:00 pm**

**Sheep/Goat Scale**

# MARKET GOATS

Entry Fee: \$50.00 per entry, Back-up Entry Fee: \$25 per entry

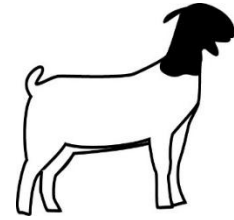
## Entry # Information:

DIVISION #457 - 4-H MARKET GOAT

DIVISION #458 - FFA MARKET GOAT

CLASS #1 – SINGLE MARKET GOAT

CLASS #2 – BACKUP MARKET GOAT



**Danish System of Judging** – No Premiums Offered

## **Awards Offered:**

- 4-H Champion & Reserve Champion Market Goat & 3<sup>rd</sup> Overall
- FFA Champion & Reserve Champion Market Goat & 3<sup>rd</sup> Overall
- Supreme & Reserve Supreme Market Goats & 3<sup>rd</sup> Overall

## **How to Enter:**

- Enter online at [www.ysfair.com](http://www.ysfair.com) click ENTER THE FAIR.
- Online Entries close on **April 24, 2026**.

## **Guidelines:**

- See Livestock Schedule for receiving/release of livestock and Schedule of Events for the Fair.
- All Local and State Rules apply.
- Limit of one (1) market animal shown per exhibitor.
- Sale Weight: 65 -115 pounds – No top weight.
- Division Classifications will be verified and officially determined at the official weigh-in.
- Only 4-H Grand & Reserve Grand Champion, FFA Grand & Reserve Grand Champion, Supreme & Reserve Supreme Champions will sell in the Sale of Champions.
- Animals judged market ready must sell in the Jr. Livestock Auction.
- Animals judged NOT MARKET READY are required to be removed from the grounds on Friday, June 26, 2026 by 9:00 am.

**Arrival Deadline:** All livestock must be in place by 2 pm, Monday, June 22<sup>nd</sup>, 2026.

## **Official Weigh-in, Classification & Health Check of Meat Goats Entries.**

Weigh-in – Monday, June 22<sup>nd</sup>, 3 pm – 5 pm at the Sheep Scale. All Wether Sire & Dam entries must be weighed in and will take place at the conclusion of the market lamb weigh-in. **If Wether Dam Doe is enter as a backup animal it may not be entered in Wether Dam Breeding Class.** All breeding sheep will be health checked at the scale staging area. Weigh-ins will take place at the scales in the Sheep Barn. Weigh-in order will be in alphabetical order of all the Clubs & Chapters combined.

*Weigh-in Order: Barry 4-H, Bear River Wheatland FFA, Browns Valley 4-H, East Nicolaus FFA, Franklin 4-H, Hallwood 4-H, Lindhurst FFA, Live Oak 4-H, Live Oak FFA, Marysville FFA, Pleasant Grove 4-H, Sutter Buttes 4-H, Sutter FFA, River Valley FFA, Wheatland 4-H, Wheatland FFA, Yuba City FFA, Independent & Grange Exhibitors*

**LOAD-OUT** of Market Goats is Sunday, June 28<sup>th</sup>, 2026. Move to Load-out pens located at the Show Pavilion between 1 pm and 2 pm.

# CLUB & CHAPTER GROUP OF MARKET GOATS

**Entry Fee:** None

## **Entry # Information:**

**DIVISION #460** - 4-H MARKET GOATS PEN OF 3

**DIVISION #461** - FFA MARKET GOATS PEN OF 3

**CLASS #1** – CLUB & CHAPTER PEN OF 3 MARKET GOATS

## **Awards Offered:**

4-H Champion & Reserve Champion Market Meat Goats Group of 3  
FFA Champion & Reserve Champion Market Meat Goats Group of 3

## **How to Enter:**

- Fair Staff enters Clubs/Chapters that are eligible to compete in this class.

## **Guidelines:**

- All Local and State Rules apply.
- Limit of one (1) entry per class per club/chapter.

# BREEDING MEAT GOATS

**Entry Fee:** \$10.00 per entry

## **Entry # Information:**

**DIVISION #462** – REGISTERED MEAT GOAT DOES

- Must be Registered or Recorded Grade Animals

**CLASS #1** – JUNIOR KID 04/01/26 – 06/01/26

**CLASS #2** – SENIOR KID 01/01/26 – 03/31/26

**CLASS #3** – YEARLING DOES 01/01/25 – 12/31/25

**CLASS #4** – AGED DOES Prior to 2025

**DIVISION #463** – WETHER DAM MEAT GOAT DOES

- Classes to be determined by weight. Check Schedule for weigh-in time.

**CLASS #1** – WETHER DAM DOES (Classes will be determined and sorted by weight.)

**Premiums Offered:** First: \$20.00 Second: \$15.00 Third: \$10.00

## **Division Champions:**

Champion & Reserve Champion Registered Doe  
Champion & Reserve Champion Wether Dam Doe  
Supreme Champion & Reserve Supreme Champion Doe

## **How to Enter:**

- Enter online at [www.vsfair.com](http://www.vsfair.com) click ENTER THE FAIR.
- Online Entries close on **May 1, 2026**.

## **Guidelines:**

- See Livestock Schedule for receiving/release of livestock and Schedule of Events for the Fair.
- All Local and State Rules apply.
- Limit 6 head per exhibitor.

# BRED & OWNED BREEDING MEAT GOATS

**Entry Fee: \$10.00 per entry**

**Entry # Information:**

**DIVISION #464-** BRED AND OWNED BREEDING GOAT (Must be Registered)

**CLASS #1** – DOE

**Premiums Offered:**      First: \$20.00                      Second: \$15.00                      Third: \$10.00

**Awards Offered:**

Champion & Reserve Champion Bred & Owned Breeding Doe

**How to Enter:**

- Enter online at [www.ysfair.com](http://www.ysfair.com) click ENTER THE FAIR.
- Online Entries close on **May 1, 2026**.

**Guidelines:**

- All Local and State Rules apply.
- This award will be given to the exhibitor with a REGISTERED animal that they bred and currently own. They must have owned the dam at the time of the animal's conception and the exhibitor must have provided primary care for the animal from birth through the fair.
- 4-H and FFA will compete together.
- Animals must have shown in a Breeding Goat Class.

# MEAT GOAT SHOWMANSHIP

**Entry Fee: \$10.00 per entry**

## **Entry # Information:**

**DIVISION #452** - 4-H NOVICE SHOWMANSHIP

**DIVISION #453** - 4-H JUNIOR SHOWMANSHIP

**DIVISION #454** - 4-H SENIOR SHOWMANSHIP

**DIVISION #455** - FFA NOVICE SHOWMANSHIP

**DIVISION #456** - FFA ADVANCED SHOWMANSHIP

**CLASS #1** – MEAT GOAT SHOWMANSHIP

**Premiums Offered:**      First: \$35.00      Second: \$25.00      Third: \$15.00

## **Awards Offered:**

4-H Champion & Reserve Champion Novice Meat Goat Showman

4-H Champion & Reserve Champion Junior Meat Goat Showman

4-H Champion & Reserve Champion Senior Meat Goat Showman

FFA Champion & Reserve Champion Novice Meat Goat Showman

FFA Champion & Reserve Champion Advanced Meat Goat Showman

## **How to Enter:**

- Enter online at [www.vsfair.com](http://www.vsfair.com) click ENTER THE FAIR.
- Online Entries close on **May 1, 2026**.
- Showmanship must be pre-entered. No entry available at ringside.

## **Guidelines:**

- See Livestock Schedule for receiving/release of livestock and Schedule of Events for the Fair.
- All Local and State Rules apply.
- Competition is open to all Junior Exhibitors that reside in Yuba and Sutter County OR are a member of a Yuba-Sutter 4-H, FFA or Grange program or a registered Independent only.

### **4-H Showmanship Definitions:**

- Novice: Those exhibitors who have never shown in any prior Meat Goat Showmanship class at any county, district or state fair. 4-H Spring Fair and/or Primary Showmanship do not qualify as prior showmanship experience. First and second place winners from the Novice class may move to the Junior or Senior class, providing the winner is of the correct age for the class.
- Junior: Those exhibitors thirteen (13) years of age and under prior to January 1, 2026. Junior winners do not advance to the Senior division. There is a Junior Master Showmanship Competition for Junior Exhibitors.
- Senior: Those exhibitors fourteen (14) years of age and older prior to January 1, 2026.

### **FFA Showmanship Definitions:**

- Novice: Those exhibitors who have never shown in any prior 4-H or FFA Meat Goat Showmanship class at any other county, district or state fair. The first and second place winner in the Novice showmanship class may compete in the Advanced Showmanship Class for cash awards.
- Advanced: Those exhibitors who have had prior 4-H or FFA Meat Goat Showmanship experience.

# JUNIOR DAIRY GOATS

## DAIRY GOAT SHOWMANSHIP

**Entry Fee: \$10.00 per entry**

### **Entry # Information:**

**DIVISION #515** - 4-H NOVICE SHOWMANSHIP

**DIVISION #516** - 4-H JUNIOR SHOWMANSHIP

**DIVISION #517** - 4-H SENIOR SHOWMANSHIP

**DIVISION #518** - FFA NOVICE SHOWMANSHIP

**DIVISION #519** - FFA ADVANCED SHOWMANSHIP

**CLASS #1** – DAIRY GOAT SHOWMANSHIP

**Premiums Offered:** First: \$35.00    Second: \$25.00    Third: \$15.00

### **Awards Offered:**

- 4-H Champion & Reserve Champion Novice Dairy Goat Showman
- 4-H Champion & Reserve Champion Junior Dairy Goat Showman
- 4-H Champion & Reserve Champion Senior Dairy Goat Showman
- FFA Champion & Reserve Champion Novice Dairy Goat Showman
- FFA Champion & Reserve Champion Advanced Dairy Goat Showman

### **How to Enter:**

- Enter online at [www.vsfair.com](http://www.vsfair.com) click ENTER THE FAIR.
- Online Entries close on **May 1, 2026**.
- Showmanship must be pre-entered. No entry available at ringside.

### **Guidelines:**

- See Livestock Schedule for receiving/release of livestock and Schedule of Events for the Fair.
- All Local and State Rules apply.
- Competition is open to all Junior Exhibitors that reside in Yuba and Sutter County OR are a member of a Yuba-Sutter 4-H, FFA or Grange program or a registered independent only.

#### **4-H Showmanship Definitions:**

- Primary: Those exhibitors who are under nine (9) years of age prior to January 1, 2026 and are currently enrolled in Primary 4-H projects.
- Novice: Those exhibitors who have never shown in any prior Dairy Goat Showmanship class at any county, district or state fair. 4-H Spring Fair and/or Primary Showmanship do not qualify as prior showmanship experience. First and second place winners from the Novice class may move to the Junior or Senior class, providing the winner is of the correct age for the class.
- Junior: Those exhibitors thirteen (13) years of age and under prior to January 1, 2026. Junior winners do not advance to the Senior division. There is a Junior Master Showmanship Competition for Junior Exhibitors.
- Senior: Those exhibitors fourteen (14) years of age and older prior to January 1, 2026.

#### **FFA Showmanship Definitions:**

- Novice: Those exhibitors who have never shown in any prior 4-H or FFA Dairy Goat Showmanship class at any other county, district or state fair. The first and second place winner in the Novice showmanship class may compete in the Advanced Showmanship Class for cash awards.
- Advanced: Those exhibitors who have had prior 4-H or FFA Dairy Goat Showmanship experience.

# DAIRY GOAT SHOW

**Entry Fee: \$10.00 per entry**

## **Entry # Information:**

**DIVISION #520 – NIGERIAN DWARF DAIRY GOATS**

**DIVISION #521 - LAMANCHA DAIRY GOATS**

**DIVISION #522 - AOB DAIRY GOATS**

**DIVISION #523 - GRADE DAIRY GOATS**



**CLASS #1 – JUNIOR KID (1-4 months)**

03/01/26 – 06/01/26

**CLASS #2 – INTERMEDIATE KID (5-8 months)**

11/01/25 – 02/28/26

**CLASS #3 – SENIOR KID (9-12 months)**

06/01/25 – 10/31/25

**CLASS #4 – YEARLING Not in Milk (12-24 months)**

06/01/24 – 05/31/25

**CLASS #5 – YEARLING MILKER**

06/01/24 – 05/31/25

**CLASS #6 – TWO YEARS, BUT LESS THAN 3**

06/01/23 – 05/31/24

**CLASS #7 – THREE YEARS, BUT LESS THAN 4**

06/01/22 – 05/31/23

**CLASS #8 – FOUR YEARS, BUT LESS THAN 5**

06/01/21 – 05/31/22

**CLASS #9 – FIVE YEARS & OVER**

Prior to 06/01/21

**CLASS #10 – Get of Sire – Three does sired by same buck, at least one to be a yearling or older in milk**

**CLASS #11 – Three Best Females**

**CLASS #12 – Produce of Dam – Two daughters from same dam**

**CLASS #13 – Dam and Daughter (milking daughter will have a distinct advantage. It is not necessary that the daughter be a milker)**

## **Premiums Offered:**

First: \$20.00

Second: \$15.00

Third: \$10.00

## **Awards Offered:**

Champion & Reserve Champion Nigerian Dwarf Dairy Goat

Champion & Reserve Champion Lamancha Dairy Goat

Champion & Reserve Champion AOB Dairy Goat

Champion & Reserve Champion Grade Dairy Goat

Supreme Champion & Reserve Supreme Champion Doe

## **How to Enter:**

- Enter online at [www.vsfair.com](http://www.vsfair.com) click ENTER THE FAIR.
- Online Entries close on **May 1, 2026**.

## **Guidelines:**

- See Livestock Schedule for receiving/release of livestock and Schedule of Events for the Fair.
- All Local and State Rules apply.
- All registered and grade breeds are eligibles. Only does will be accepted. No pre-show milkout. Over-distended udders will be discriminated against.
- All goats must be show-clipped, including hooves.
- The Fair will not accept goats from Scrapie "non-compliant" flocks or animals that are Scrapie-positive or Scrapie suspects.
- Only goats entered in the show will be allowed on grounds.

# BRED & OWNED DAIRY GOATS

**Entry Fee: \$10.00 per entry**

**Entry # Information:**

**DIVISION #524** - BRED AND OWNED DAIRY GOATS (Must be Registered)

**CLASS #1** - DOE

**Premiums Offered:**      First: \$20.00                      Second: \$15.00                      Third: \$10.00

**Awards Offered:**

Champion & Reserve Champion Bred & Owned Dairy Goat Doe

**How to Enter:**

- Enter online at [www.ysfair.com](http://www.ysfair.com) click ENTER THE FAIR.
- Online Entries close on **May 1, 2026**.

**Guidelines:**

- See Livestock Schedule for receiving/release of livestock and Schedule of Events for the Fair.
- All Local and State Rules apply.
- This award will be given to the exhibitor with a REGISTERED animal that they bred and currently own. They must have owned the dam at the time of the animal's conception and the exhibitor must have provided primary care for the animal from birth through the fair.
- 4-H and FFA will compete together.
- Animals must have been shown in a Breeding Class.

# JUNIOR PYGMY GOATS

## PYGMY GOAT SHOWMANSHIP

**Entry Fee: \$10.00 per entry**

### **Entry # Information:**

**DIVISION #465** - 4-H PRIMARY PYGMY GOAT SHOWMANSHIP (Ribbons Only)

**DIVISION #466** - 4-H NOVICE SHOWMANSHIP

**DIVISION #467** - 4-H JUNIOR SHOWMANSHIP

**DIVISION #468** - 4-H SENIOR SHOWMANSHIP

**DIVISION #469** - FFA NOVICE SHOWMANSHIP

**DIVISION #470** - FFA ADVANCED SHOWMANSHIP

**CLASS #1** – PYGMY GOAT SHOWMANSHIP

**Premiums Offered:** (Not Including Primary) First: \$35.00    Second: \$25.00    Third: \$15.00

### **Awards Offered:**

- 4-H Champion & Reserve Champion Novice Pygmy Goat Showman
- 4-H Champion & Reserve Champion Junior Pygmy Goat Showman
- 4-H Champion & Reserve Champion Senior Pygmy Goat Showman
- FFA Champion & Reserve Champion Novice Pygmy Goat Showman
- FFA Champion & Reserve Champion Advanced Pygmy Goat Showman

### **How to Enter:**

- Enter online at [www.vsfair.com](http://www.vsfair.com) click ENTER THE FAIR.
- Online Entries close on **May 1, 2026**.
- Showmanship must be pre-entered. No entry available at ringside.

### **Guidelines:**

- See Livestock Schedule for receiving/release of livestock and Schedule of Events for the Fair.
- All Local and State Rules apply.
- Competition is open to all Junior Exhibitors that reside in Yuba and Sutter County OR are a member of a Yuba-Sutter 4-H, FFA or Grange program or a registered independent only.

#### **4-H Showmanship Definitions:**

- Primary: Those exhibitors who are under nine (9) years of age prior to January 1, 2026 and are currently enrolled in Primary 4-H projects.
- Novice: Those exhibitors who have never shown in any prior Pygmy Goat Showmanship class at any county, district or state fair. 4-H Spring Fair and/or Primary Showmanship do not qualify as prior showmanship experience. First and second place winners from the Novice class may move to the Junior or Senior class, providing the winner is of the correct age for the class.
- Junior: Those exhibitors thirteen (13) years of age and under prior to January 1, 2026. Junior winners do not advance to the Senior division. There is a Junior Master Showmanship Competition for Junior Exhibitors.
- Senior: Those exhibitors fourteen (14) years of age and older prior to January 1, 2026.

#### **FFA Showmanship Definitions:**

- Novice: Those exhibitors who have never shown in any prior 4-H or FFA Pygmy Goat Showmanship class at any other county, district or state fair. The first and second place winner in the Novice showmanship class may compete in the Advanced Showmanship Class for cash awards.
- Advanced: Those exhibitors who have had prior 4-H or FFA Pygmy Goat Showmanship experience.

# PYGMY GOAT SHOW – (Not a Sanctioned Show)

Entry Fee: \$10.00 per entry

## Entry # Information:

DIVISION #471 - PYGMY GOATS

### DOES

CLASS #1 – JR DOE KID (1-4 months)	03/01/26 – 06/01/26
CLASS #2 – INTERMEDIATE DOE KID (5-8 months)	11/01/25 – 02/28/26
CLASS #3 – SENIOR DOE KID (9-12 months)	06/01/25 – 10/31/25
CLASS #4 – DRY YEARLING DOE (12-24 months)	06/01/24 – 05/31/25
CLASS #5 – FRESSENEED YEARLING DOE	06/01/24 – 05/31/25
CLASS #6 – TWO YEARS, BUT LESS THAN 3	06/01/23 – 05/31/24
CLASS #7 – THREE YEARS, BUT LESS THAN 4	06/01/22 – 05/31/23
CLASS #8 – AGED DOE	Prior to 06/01/22

### WETHERS

CLASS #9 – PROSPECT WETHER (1-6 months)	12/01/25 - 06/01/26
CLASS #10 – JUNIOR WETHER (1-6 months)	12/01/25 – 06/01/26
CLASS #11 – SENIOR WETHER (6-12 months)	06/01/25 – 11/30/25
CLASS #12 – YEARLING WETHER (1-2 years)	06/01/24 - 05/31/25
CLASS #13 – AGED WETHER	Prior to 06/01/24

Premiums Offered:      First: \$20.00                      Second: \$15.00                      Third: \$10.00

### Awards Offered:

Jr. Champion & Reserve Champion Doe  
Sr. Champion & Reserve Champion Doe  
Supreme Champion & Reserve Supreme Champion Doe  
Champion & Reserve Champion Wether

### How to Enter:

- Enter online at [www.vsfair.com](http://www.vsfair.com) click ENTER THE FAIR.
- Online Entries close on **May 1, 2026.**

### Guidelines:

- Ages 5-19 are eligible.
- Open to Yuba and Sutter Counties Only.
- Limit of five (5) per exhibitor.
- **NPGA Rules will NOT apply to this show.**
- Prospect Wether Class 1-6 months. This class is limited to animals between the age of 1 to 6 months that have **NOT** yet been castrated. (not eligible to compete for Champion Wether)



# BRED & OWNED PYGMY GOATS

**Entry Fee: \$10.00 per entry**

**Entry # Information:**

**DIVISION #472 - BRED AND OWNED PYGMY GOATS**

**CLASS #1 - WETHER**

**CLASS #2 - DOE**

**Premiums Offered:**      First: \$20.00                      Second: \$15.00                      Third: \$10.00

**Awards Offered:**

Champion & Reserve Champion Bred & Owned Pygmy Goat Wether

Champion & Reserve Champion Bred & Owned Pygmy Goat Doe

**How to Enter:**

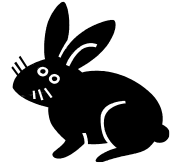
- Enter online at [www.ysfair.com](http://www.ysfair.com) click ENTER THE FAIR.
- Online Entries close on **May 1, 2026**.

**Guidelines:**

- See Livestock Schedule for receiving/release of livestock and Schedule of Events for the Fair.
- All Local and State Rules apply.
- This award will be given to the exhibitor with a REGISTERED animal that they bred and currently own. They must have owned the dam at the time of the animal's conception and the exhibitor must have provided primary care for the animal from birth through the fair.
- 4-H and FFA will compete together.
- Animals must have been shown in a Breeding Class.

# JUNIOR RABBITS

## Quick Reference Entry Information



Follow these steps to enter a Market Rabbit Meat Pen for the 2026 Yuba-Sutter Fair:

**Complete your online entry by no later than May 1, 2026.**

ENTRY INFORMATION	DIVISION #	CLASS #
<b>Market Rabbit Meat Pen</b> - Entry Fee \$40.00		
Fair-time Minimum/Maximum Weight Requirements: 3 – Rabbits - 3.5 to 5.5 lbs. each		
4-H Market Rabbit Meat Pen	479	1
FFA Market Rabbit Meat Pen	480	1
<b>4-H Rabbit Showmanship</b> – Entry Fee \$10.00		
4-H Novice & Independent (age 9–13) (1st year of specie)	474	1
4-H Junior & Independent (age 9-13)	475	1
4-H Senior (age 14 & over)	476	1
<b>FFA Rabbit Showmanship</b> – Entry Fee \$10.00		
FFA Novice & Independent (age 14 & over) (1st year of specie)	477	1
FFA Advanced & Independent (age 14 & over)	478	1

### Did you complete your online entry?

- Login and complete exhibitor information
- Enter a Showmanship Class
- Enter a Market Class
- Must submit Tattoo numbers on entry for Meat Pen and they must be tattooed before coming on fairgrounds
- Enter Breeding or other Class(es) that are applicable
- Enter all required information on Livestock entered
- Pay online and submit entries
- Print out receipt for your records
- You are not required to upload photos of your animal

#### Fair-time Arrival Date & Time

##### **Market Rabbit Meat Pen**

**Monday, June 22<sup>nd</sup>**

**8:00 am to 10:00 am**

**Gate 16**

*All Rabbits must be in place by no later than 10:00 am*

#### Fair-time Weigh-In Date & Time

##### **Market Rabbit Meat Pen**

**Monday, June 22<sup>nd</sup>**

**8:00 am to 10:00 am**

**Gate 16**

*All Rabbits must be in place by no later than 10:00 am*

# MARKET RABBIT MEAT PENS

**Entry Fee: \$40.00 per entry**

**Entry # Information:**

**DIVISION #479 - 4-H RABBIT MEAT PENS**

**DIVISION #480 - FFA RABBIT MEAT PENS**

**CLASS #1 – RABBIT MEAT PEN**

**Danish System of Judging - No Premiums Offered**

**Awards Offered:**

- 4-H Champion & Reserve Champion Rabbit Meat Pen & 3<sup>rd</sup> Overall
- FFA Champion & Reserve Champion Rabbit Meat Pen & 3<sup>rd</sup> Overall
- Supreme Champion & Reserve Supreme Champion Rabbit Meat Pen & 3<sup>rd</sup> Overall

**How to Enter:**

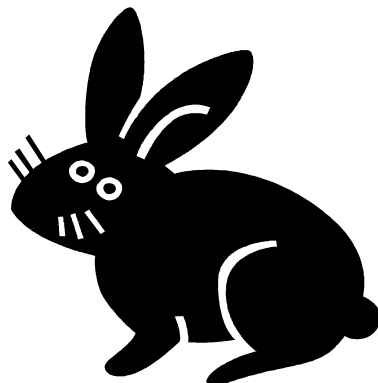
- Enter online at [www.ysfair.com](http://www.ysfair.com) click ENTER THE FAIR.
- Online Entries close on **May 1, 2026**.

**Guidelines:**

- See Livestock Schedule for receiving/release of livestock and Schedule of Events for the Fair.
- All Local and State Rules apply.
- Limit of one (1) meat pen per exhibitor. Three (3) rabbits, same breed and color not over 70 days old.
- 3 Rabbits - 3.5 – 5.5 pounds each. Rabbits under 3.5 lbs or over 5.5 lbs will be disqualified.
- Animals judged NOT MARKET READY are required to be removed from the grounds on Friday, June 26, 2026 by 8:30 am.
- Only 4-H Grand & Reserve Grand Champion, FFA Grand & Reserve Grand Champion, Supreme & Reserve Supreme Champions will sell in the Sale of Champions.

**Arrival of Rabbits - Official Health Check & Weigh-in**

Weigh-in – Monday, June 22<sup>nd</sup>, 2026 between 11 am and Noon. Health Inspection and official weigh-in of all rabbits will take place at Gate 16 in the North Parking Lot. Enter thru Gate 12 on C Street. Proceed to drive to Gate 16 for the Health Inspection and weigh-in. Upon completion, you will be admitted to drive into the fairgrounds to the Small Animal Rabbit Barn for drop off.



# BREEDING RABBIT SHOW

Entry Fee: \$10.00 per entry

## Entry # Information:

### DIVISION #481 – BREEDING RABBITS

- CLASS #1 – NEW ZEALAND BUCKS
- CLASS #2 – NEW ZEALAND DOES
- CLASS #3 – NETHERLAND DWARF BUCKS
- CLASS #4 – NETHERLAND DWARF DOES
- CLASS #5 – MINI LOP BUCKS
- CLASS #6 – MINI LOP DOES
- CLASS #7 – ALL OTHER BUCKS (specify)
- CLASS #8 – ALL OTHER DOES (specify)

### DIVISION #482 – MEAT ANIMAL: NOT SOLD IN JR. LIVESTOCK AUCTION

- CLASS #1 – MEAT PEN
- CLASS #2 – SINGLE FRYER

Premiums Offered: (Not including Primary)      First: \$20.00      Second: \$15.00      Third: \$10.00

### Awards Offered:

- Champion & Reserve Champion Breeding Buck
- Champion & Reserve Champion Breeding Doe
- Champion & Reserve Champion Meat Rabbit

### How to Enter:

- Enter online at [www.vsfair.com](http://www.vsfair.com) click ENTER THE FAIR.
- Online Entries close on **May 1, 2026**.

### Guidelines:

- Open to Yuba and Sutter Counties Only.
- Limit of three (3) rabbits per exhibitor.
- **This is NOT AN ARBA Show.**
- All animals must be identified by a permanent ear marking (tattoo number for rabbits)
- Each exhibitor is responsible for taking his/her own animal to the show table.
- The animals are required to stay on the fair ground for the duration of the fair.
- The Fair will do its best to provide a shaded cool area for the rabbit show and display, along with fans for air movement. We suggest that each exhibitor bring along ice bottles or a block of ice to cool the rabbits down in case of extreme heat.
- Breeding Rabbits will be released after Small Animal Master Showmanship on Friday, June 26, 2026 and must be removed from fairgrounds by 8 pm.

# RABBIT SHOWMANSHIP

Entry Fee: \$10.00 per entry

## Entry # Information:

**DIVISION #473** – 4-H PRIMARY SHOWMANSHIP  
**DIVISION #474** - 4-H NOVICE SHOWMANSHIP  
**DIVISION #475** - 4-H JUNIOR SHOWMANSHIP  
**DIVISION #476** - 4-H SENIOR SHOWMANSHIP  
**DIVISION #477** - FFA NOVICE SHOWMANSHIP  
**DIVISION #478** - FFA ADVANCED SHOWMANSHIP

**CLASS #1** – RABBIT SHOWMANSHIP

**Premiums Offered:** :(Not Including Primary)      First: \$35.00      Second: \$25.00      Third: \$15.00

## **Awards Offered:**

4-H Champion & Reserve Champion Novice Rabbit Showman  
4-H Champion & Reserve Champion Junior Rabbit Showman  
4-H Champion & Reserve Champion Senior Rabbit Showman  
FFA Champion & Reserve Champion Novice Rabbit Showman  
FFA Champion & Reserve Champion Advanced Rabbit Showman

## **How to Enter:**

- Enter online at [www.vsfair.com](http://www.vsfair.com) click ENTER THE FAIR.
- Online Entries close on **May 1, 2026**.
- Showmanship must be pre-entered. No entry available at ringside.

## **Guidelines:**

- See Livestock Schedule for receiving/release of livestock and Schedule of Events for the Fair.
- All Local and State Rules apply.
- Competition is open to all Junior Exhibitors that reside in Yuba and Sutter County OR are a member of a Yuba-Sutter 4-H, FFA or Grange program or a registered independent only.
- **Showmanship Rabbits must be entered in a Breeding or Market Class with the exception of Primary Showmanship.**

### **4-H Showmanship Definitions:**

- Primary: Those exhibitors who are under nine (9) years of age prior to January 1, 2026 and are currently enrolled in Primary 4-H projects.
- Novice: Those exhibitors who have never shown in any prior Rabbit Showmanship class at any county, district or state fair. 4-H Spring Fair and/or Primary Showmanship do not qualify as prior showmanship experience. First and second place winners from the Novice class may move to the Junior or Senior class, providing the winner is of the correct age for the class.
- Junior: Those exhibitors thirteen (13) years of age and under prior to January 1, 2026. Junior winners do not advance to the Senior division. There is a Junior Master Showmanship Competition for Junior Exhibitors.
- Senior: Those exhibitors fourteen (14) years of age and older prior to January 1, 2026.

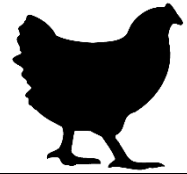
### **FFA Showmanship Definitions:**

- Novice: Those exhibitors who have never shown in any prior 4-H or FFA Rabbit Showmanship class at any other county, district or state fair. The first and second place winner in the Novice showmanship class may compete in the Advanced Showmanship Class for cash awards.
- Advanced: Those exhibitors who have had prior 4-H or FFA Rabbit Showmanship experience.

# JUNIOR POULTRY CHICKENS

## Quick Reference Entry Information

Follow these steps to enter a Market Poultry Pen for the 2026 Yuba-Sutter Fair:  
**Complete your online entry by no later than May 1, 2026.**



<b>ENTRY INFORMATION</b>	<b>DIVISION #</b>	<b>CLASS #</b>
<b>Market Poultry Meat Pen: Entry Fee \$40.00</b>		
Fair-time Minimum/Maximum Weight Requirements: 2 – Chickens - 3.5 lbs. to 6 lbs. each		
4-H Market Poultry Meat Pen	489	1
FFA Market Poultry Meat Pen	490	1
<b>4-H Poultry Chicken Showmanship – Entry Fee \$10.00</b>		
4-H Novice & Independent (age 9–13) (1st year of specie)	484	1
4-H Junior & Independent (age 9-13)	485	1
4-H Senior (age 14 & over)	486	1
<b>FFA Poultry Chicken Showmanship – Entry Fee \$10.00</b>		
FFA Novice & Independent (age 14 & over) (1st year of specie)	487	1
FFA Advanced & Independent (age 14 & over)	488	1

### Did you complete your online entry?

- Login and complete exhibitor information
- Enter a Showmanship Class
- Enter a Market Class
- Be sure your Fair ID Tag on Market Animals is accurate
- Enter all required information on Livestock entered
- Pay online and submit entries
- Print out receipt for your records
- You are not required to upload photos of your animal

Fair-time Weigh-In Date & Time  
**Market Poultry Meat Pen**  
**Monday, June 22<sup>nd</sup>**  
**10:00 am to 11:00 am**  
**Gate 16**  
*All Chickens must be in place and weighed in by no later than 11:00 am*

Fair-time Arrival Date & Time  
**Market Poultry Meat Pen**  
**Monday, June 22<sup>nd</sup>**  
**10:00 am to 11:00 am**  
**Gate 16**  
*All Chickens must be in place by no later than 11:00 am*

# MARKET POULTRY MEAT PENS

Entry Fee: \$40.00 per entry

## **Entry # Information:**

**DIVISION #489** - 4-H POULTRY MEAT PENS

**DIVISION #490** - FFA POULTRY MEAT PENS

**CLASS #1** – POULTRY MEAT PEN

**Danish System of Judging** - No Premiums Offered

## **Awards Offered:**

4-H Champion & Reserve Champion Poultry Meat Pen & 3<sup>rd</sup> Overall

FFA Champion & Reserve Champion Poultry Meat Pen & 3<sup>rd</sup> Overall

Supreme Champion & Reserve Supreme Champion Poultry Meat Pen & 3<sup>rd</sup> Overall

## **How to Enter:**

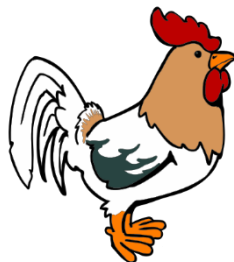
- Enter online at [www.vsfair.com](http://www.vsfair.com) click ENTER THE FAIR.
- Online Entries close on **May 1, 2026**.

## **Guidelines:**

- See Livestock Schedule for receiving/release of livestock and Schedule of Events for the Fair.
- All Local and State Rules apply.
- All breeds judged together.
- All meat pen birds must be banded with regulation numbered bands. The band will be provided by the fair and put on the bird at poultry inspection.
- Limit of one (1) meat pen per exhibitor. Two (2) birds the same sex, breed and not over 8 weeks of age.
- 2 birds - 3.5 - 6 lbs. each. Birds under 3.5 lbs. or over 6 lbs. will be disqualified.
- Animals judged market ready must sell in the Jr. Livestock Auction.
- Animals judged NOT MARKET READY will remain in their assigned pen throughout the duration of the fair and be harvested by the fair's contracted poultry processor at the exhibitor's expense.
- Only 4-H Grand & Reserve Grand Champion, FFA Grand & Reserve Grand Champion, Supreme & Reserve Supreme Champions will sell in the Sale of Champions.
- All Poultry exhibits are required to be inspected by the Poultry Health Inspector upon arrival and prior to being penned. Health Inspections of ALL Poultry will take place in the North Parking Lot location prior to admittance. Enter thru Gate 12 on "C" Street. Proceed to Gate 16 for the Health Inspection.

## **Arrival of Chickens – Official Health Check & Weigh-in**

Weigh-in – Monday, June 22<sup>nd</sup>, 2026, between 10 am and 11 am. Health Inspection and official weigh-in of all chickens will take place at Gate 16 in the North Parking Lot. Enter thru Gate 12 on C Street. Proceed to drive to Gate 15 for the Health Inspection and weigh-in. Upon completion, you will be admitted to drive into the fairgrounds to the Small Animal Chicken Barn for drop off.



# BREEDING POULTRY SHOW

**Entry Fee: \$10.00 per entry**

## **Entry # Information:**

**DIVISION #491** - ALL LARGE BREED POULTRY

**DIVISION #492** - ALL SMALL BREED POULTRY

**DIVISION #493** - ALL MEAT POULTRY (single entry not market poultry)

**CLASS #1** - Rooster

**CLASS #2** - Hen

## **How to Enter:**

- Enter online at [www.ysfair.com](http://www.ysfair.com) click ENTER THE FAIR.
- Online Entries close on **May 1, 2026**.

## **Guidelines:**

- Open to Yuba and Sutter Counties Only.
- Limit of three (3) birds per exhibitor.
- All animals must be identified by a leg band.
- Each exhibitor is responsible for taking his/her own animal to the show table.
- The animals are required to stay on the fairgrounds for the duration of the fair unless otherwise noted.
- The Fair will do its best to provide a shaded cool area for the poultry show and display, along with fans for air movement.
- All Poultry exhibits are required to be inspected by the Poultry Health Inspector upon arrival and prior to being penned. Health Inspections of ALL Poultry will take place in the North Parking Lot location prior to admittance. Enter thru Gate 12 on "C" Street. Proceed to Gate 16 for the Health Inspection.
- Breeding Poultry will be released after Small Animal Master Showmanship on Friday, June 26, 2026 and must be removed from fairgrounds by 8 pm on Friday.

# POULTRY SHOWMANSHIP

**Entry Fee: \$10.00 per class**

## **Entry # Information:**

**DIVISION #483** - 4-H PRIMARY SHOWMANSHIP (Ribbons Only)

**DIVISION #484** - 4-H NOVICE SHOWMANSHIP

**DIVISION #485** - 4-H JUNIOR SHOWMANSHIP

**DIVISION #486** - 4-H SENIOR SHOWMANSHIP

**DIVISION #487** - FFA NOVICE SHOWMANSHIP

**DIVISION #488** - FFA ADVANCED SHOWMANSHIP

**CLASS #1** – POULTRY SHOWMANSHIP

**Premiums Offered:** (Not Including Primary)    First: \$35.00    Second: \$25.00    Third: \$15.00

## **Awards Offered:**

4-H Champion & Reserve Champion Novice Poultry Showman

4-H Champion & Reserve Champion Junior Poultry Showman

4-H Champion & Reserve Champion Senior Poultry Showman

FFA Champion & Reserve Champion Novice Poultry Showman

FFA Champion & Reserve Champion Advanced Poultry Showman

## **How to Enter:**

- Enter online at [www.vsfair.com](http://www.vsfair.com) click ENTER THE FAIR.
- Online Entries close on **May 1, 2026**.
- Showmanship must be pre-entered. No entry available at ringside.

## **Guidelines:**

- See Livestock Schedule for receiving/release of livestock and Schedule of Events for the Fair.
- All Local and State Rules apply.
- Competition is open to all Junior Exhibitors that reside in Yuba and Sutter County OR are a member of a Yuba-Sutter 4-H, FFA or Grange program or a registered independent only.
- **Showmanship Poultry must be entered in a Breeding or Market Class with the exception of Primary Showmanship.**

### **4-H Showmanship Definitions:**

- **Primary:** Those exhibitors who are under nine (9) years of age prior to January 1, 2026 and are currently enrolled in Primary 4-H projects.
- **Novice:** Those exhibitors who have never shown in any prior Poultry Showmanship class at any county, district or state fair. 4-H Spring Fair and/or Primary Showmanship do not qualify as prior showmanship experience. First and second place winners from the Novice class may move to the Junior or Senior class, providing the winner is of the correct age for the class.
- **Junior:** Those exhibitors thirteen (13) years of age and under prior to January 1, 2026. Junior winners do not advance to the Senior division. There is a Junior Master Showmanship Competition for Junior Exhibitors.
- **Senior:** Those exhibitors fourteen (14) years of age and older prior to January 1, 2026.

### **FFA Showmanship Definitions:**

- **Novice:** Those exhibitors who have never shown in any prior 4-H or FFA Poultry Showmanship class at any other county, district or state fair. The first and second place winner in the Novice showmanship class may compete in the Advanced Showmanship Class for cash awards.
- **Advanced:** Those exhibitors who have had prior 4-H or FFA Poultry Showmanship experience.

# JUNIOR TURKEYS

## Quick Reference Entry Information



Follow these steps to enter a Market Turkey for the 2026 Yuba-Sutter Fair:  
**Complete your online entry by no later than May 1, 2026.**

ENTRY INFORMATION	DIVISION #	CLASS #
<b>Market Turkey: Entry Fee \$40.00</b>		
Fair-time Minimum/Maximum Weight Requirements: 20 lbs. to 30 lbs. – Turkeys under 20 lbs. and over 30 lbs. will be disqualified		
4-H Market Turkey	500	1
FFA Market Turkey	502	1
<b>4-H Turkey Showmanship – Entry Fee \$10.00</b>		
4-H Novice & Independent (age 9–13) (1st year of specie)	495	1
4-H Junior & Independent (age 9-13)	496	1
4-H Senior (age 14 & over)	497	1
<b>FFA Turkey Showmanship – Entry Fee \$10.00</b>		
FFA Novice & Independent (age 14 & over) (1st year of specie)	498	1
FFA Advanced & Independent (age 14 & over)	499	1

### Did you complete your online entry?

- Login and complete exhibitor information
- Enter a Showmanship Class
- Enter a Market Class
- Be sure your Fair ID Tag on Market Animals in accurate
- Enter Breeding or other Class(es) that are applicable
- Enter all required information on Livestock entered
- Pay online and submit entries
- Print out receipt for your records
- You are not required to upload photos of your animal

#### Fair-time Weigh-In Date & Time

**Market Turkeys**  
**Monday, June 22<sup>nd</sup>**  
**8:00 am to 10:00 am**  
**Gate 16**

#### Fair-time Arrival Date & Time

**Market Turkeys**  
**Monday, June 22<sup>nd</sup>**  
**8:00 am to 10:00 am**  
**Gate 16**

*All Turkeys must be in place by no later than 10:00 am*

# MARKET TURKEYS

**Entry Fee: \$40.00 per entry**

## **Entry # Information:**

**DIVISION #500 - 4-H MARKET TURKEY**

**DIVISION #502 - FFA MARKET TURKEY**

**CLASS #1 – MARKET TURKEY**



**Danish System of Judging - No Premiums Offered**

## **Awards Offered:**

- 4-H Champion & Reserve Champion Turkey - Hen & 3<sup>rd</sup> Overall
- 4-H Champion & Reserve Champion Turkey – Tom & 3<sup>rd</sup> Overall
- 4-H Overall Champion & Overall Reserve Champion Turkey & 3<sup>rd</sup> Overall
- FFA Champion & Reserve Champion Turkey - Hen & 3<sup>rd</sup> Overall
- FFA Champion & Reserve Champion Turkey – Tom & 3<sup>rd</sup> Overall
- FFA Overall Champion & Overall Reserve Champion Turkey & 3<sup>rd</sup> Overall
- Supreme Champion & Reserve Supreme Champion Turkey & 3<sup>rd</sup> Overall

## **How to Enter:**

- Enter online at [www.vsfair.com](http://www.vsfair.com) click ENTER THE FAIR.
- Online Entries close on **May 1, 2026**.

## **Guidelines:**

- See Livestock Schedule for receiving/release of livestock and Schedule of Events for the Fair.
- All Local and State Rules apply.
- The Turkeys sex will be determined at the Poultry Health Inspection.
- All turkeys must be banded with regulation numbered bands. The band will be provided by the fair and put on the bird at poultry inspection.
- Limit of one (1) market turkey per exhibitor not over 22 weeks of age.
- 20 - 30 lbs. Birds under 20 lbs. or over 30 lbs. will be disqualified.
- Animals judged market ready must sell in the Jr. Livestock Auction.
- Animals judged NOT MARKET READY will remain in their assigned pen throughout the duration of the fair and be harvested by the fair's contracted poultry processor at the exhibitor's expense.
- Only 4-H Grand & Reserve Grand Champion, FFA Grand & Reserve Grand Champion, Supreme & Reserve Supreme Champions will sell in the Sale of Champions.
- All Turkey exhibits are required to be inspected by the Poultry Health Inspector upon arrival and prior to being penned. Health Inspections of ALL Poultry will take place in the North Parking Lot location prior to admittance. Enter thru Gate 12 on "C" Street. Proceed to Gate 16 for the Health Inspection.

## **Arrival of Turkeys – Official Health Check & Weigh-in**

Weigh-in – Monday, June 22<sup>nd</sup>, 2026 between 8 am – 10 am. Health Inspection and official weigh-in of all turkeys will take place at Gate 16 in the North Parking Lot. Enter thru Gate 12 on C Street. Proceed to drive to Gate 15 for the Health Inspection and weigh-in. Upon completion, you will be admitted to drive into the fairgrounds to the Turkey Barn for drop off.

# TURKEY SHOWMANSHIP

**Entry Fee: \$10.00 per class**

## **Entry # Information:**

**DIVISION #495** - 4-H NOVICE SHOWMANSHIP  
**DIVISION #496** - 4-H JUNIOR SHOWMANSHIP  
**DIVISION #497** - 4-H SENIOR SHOWMANSHIP  
**DIVISION #498** - FFA NOVICE SHOWMANSHIP  
**DIVISION #499** - FFA ADVANCED SHOWMANSHIP

**CLASS #1** – TURKEY SHOWMANSHIP

**Premiums Offered:**      First: \$35.00      Second: \$25.00      Third: \$15.00

## **Awards Offered:**

4-H Champion & Reserve Champion Novice Turkey Showman  
4-H Champion & Reserve Champion Junior Turkey Showman  
4-H Champion & Reserve Champion Senior Turkey Showman  
FFA Champion & Reserve Champion Novice Turkey Showman  
FFA Champion & Reserve Champion Advanced Turkey Showman

## **How to Enter:**

- Enter online at [www.vsfair.com](http://www.vsfair.com) click ENTER THE FAIR.
- Online Entries close on **May 1, 2026**.
- Showmanship must be pre-entered. No entry available at ringside.

## **Guidelines:**

### **4-H Showmanship Definitions:**

- Novice: Those exhibitors who have never shown in any prior Turkey Showmanship class at any county, district or state fair. 4-H Spring Fair and/or Primary Showmanship do not qualify as prior showmanship experience. First and second place winners from the Novice class may move to the Junior or Senior class, providing the winner is of the correct age for the class.
- Junior: Those exhibitors thirteen (13) years of age and under prior to January 1, 2026. Junior winners do not advance to the Senior division. There is a Junior Master Showmanship Competition for Junior Exhibitors.
- Senior: Those exhibitors fourteen (14) years of age and older prior to January 1, 2026.

### **FFA Showmanship Definitions:**

- Novice: Those exhibitors who have never shown in any prior 4-H or FFA Turkey Showmanship class at any other county, district or state fair. The first and second place winner in the Novice showmanship class may compete in the Advanced Showmanship Class for cash awards.
- Advanced: Those exhibitors who have had prior 4-H or FFA Turkey Showmanship experience.

# JUNIOR DOG SHOW

## DOG OBEDIENCE

**Entry Fee: \$10.00 per entry**

**Entry # Information:**

**DIVISION #510 - PRIMARY DOG OBEDIENCE**  
Members five (5) years and under nine (9) years old prior to January 1, 2026.

**CLASS #1 – PRIMARY SUB NOVICE AA**  
**CLASS #2 – PRIMARY SUB NOVICE BB**  
**CLASS #3 – PRIMARY RALLY DOG OBEDIENCE**



**DIVISION #511 - DOG OBEDIENCE**  
Members nine (9) years old and over prior to January 1, 2026.

**CLASS #1 – SUB-NOVICE A**  
**CLASS #2 – SUB-NOVICE B**  
**CLASS #3 – SUB-NOVICE C**  
**CLASS #4 – SUB-NOVICE D**  
**CLASS #5 – NOVICE A**  
**CLASS #6 – NOVICE B**  
**CLASS #7 – GRADUATE NOVICE**  
**CLASS #8 – OPEN**

**Premiums Offered: (Not including Primary)** First: \$20.00      Second: \$15.00      Third: \$10.00

**Awards Offered:**

Champion & Reserve Champion Sub Novice A Dog Obedience  
Champion & Reserve Champion Sub Novice B Dog Obedience  
Champion & Reserve Champion Sub Novice C Dog Obedience  
Champion & Reserve Champion Sub Novice D Dog Obedience  
Champion & Reserve Champion Novice A Dog Obedience  
Champion & Reserve Champion Novice B Dog Obedience  
Champion & Reserve Champion Graduate Novice Dog Obedience  
Champion & Reserve Champion Open Dog Obedience

**How to Enter:**

- Enter online at [www.vsfair.com](http://www.vsfair.com) click ENTER THE FAIR.
- Online Entries close on **May 1, 2026**.

**Guidelines:**

- See Livestock Schedule for receiving/release of livestock and Schedule of Events for the Fair.
- All Local and State Rules apply.
- Ages 5-19 are eligible.
- Open to Yuba and Sutter Counties Only.
- Competition is open to any member currently enrolled in a Junior Dog Obedience Project.
- 4-H and FFA exhibitors are judged together.
- Exhibitor must use a dog owned by the Junior member or his/her immediate family and trained as his/her project.
- Dogs must be kept on a leash.
- Dogs may not arrive on the Fairgrounds prior to 7 AM and must be removed from the grounds immediately following the conclusion of the show.

- As a courtesy to others who visit the Fairgrounds, please clean up after your animals.
- Bitches in season will not be allowed to compete. Uncontrolled or aggressive dogs will be dismissed.

**Definitions:**

**PRIMARY DOG OBEDIENCE – Open to Exhibitors ages 5-9**

**PRIMARY SUB-NOVICE:** All exercises on a 6 ft. leash; heel, figure eight, recall, stand for examination, long sit (1 minute), long down (1 minute).

**Primary Sub-Novice AA** – First and second year exhibitors in Sub-Novice ages 5-9  
**Primary Sub-Novice BB** – Third and fourth year exhibitor in Sub-Novice ages 5-9

**DOG OBEDIENCE – Open to Exhibitors ages 9 and over**

**SUB NOVICE:** All exercises on a 6 ft. leash; heel, figure eight, recall, stand for examination, long sit (1 minute), long down (1 minute).

**Sub-Novice A:** First year exhibitor in Sub-Novice and first year dog in project.

**Sub-Novice B:** Second year exhibitor in Sub-Novice or other and first or second year dog in project. (If you have exhibited for multiple years but you are training a new dog, this would be the class you would enter your dog in)

**Sub-Novice C:** Third year exhibitor in Sub-Novice and beyond and third or fourth year dog and beyond in project.

**Sub-Novice D:** All other Sub-Novice exhibitors.

**NOVICE:** Heel, figure eight, stand for examination all on 6 ft. leash, heel (off leash), recall (off leash), long sit (1 minute), long down (1 minute). Fifth plus year for dog. Dogs that have received a qualifying score in a Novice Class or that have received a qualifying score in Graduate Novice or Open Obedience at any obedience competition must enter Graduate Novice or Open Obedience.

**Novice A:** This is the only dog the exhibitor has trained. Dog or exhibitor has not received more than two qualifying scores in Novice at any obedience competition.

**Novice B:** Third year exhibitor in Novice and second or third year dog in project.

**GRADUATE NOVICE:** *On Leash:* Heel, figure eight, stand for examination. *Off Leash:* Heel, figure eight, drop on recall, *On Leash:* Long sit (1 minute) and long down (1 minute). Dogs that have received a qualifying score in Graduate Novice at a previous obedience competition must enter Open Obedience.

**OPEN:** All exercises off leash; heel, figure eight, on leash long sit (3 minutes) and on leash long down (3 minutes), drop on recall, retrieve on flat, stand your dog and get your leash.

**DIVISION #512 – RALLY DOG OBEDIENCE**

Members nine (9) years old and over prior to January 1, 2026.

**CLASS #1 – NOVICE**

**CLASS #2 – INTERMEDIATE**

**CLASS #3 – ADVANCED**

**CLASS #4 – EXCELLENT**

**Premiums Offered:** First: \$20.00      Second: \$15.00      Third: \$10.00

**Awards Offered:**

- Champion & Reserve Champion Novice Rally Dog Obedience
- Champion & Reserve Champion Intermediate Rally Dog Obedience
- Champion & Reserve Champion Advanced Rally Dog Obedience
- Champion & Reserve Champion Excellence Rally Dog Obedience

**How to Enter:**

- Enter online at [www.vsfair.com](http://www.vsfair.com) click ENTER THE FAIR.
- Online Entries close on **May 1, 2026.**

**Definitions:**

- Novice is conducted on-leash.

- Intermediate and Advanced course include jumps, and more challenging exercises, while Excellent is more demanding still.
- There should be evidence of teamwork between the dog and handler, but perfect "heel position" is not required. The team starts with 100 points, and the judge deducts points for mistakes such as a tight leash, crooked sits, or performing an exercise incorrectly. There is no time limit and the team moves at their own pace, however at competition level, the performance is timed, and in the event of a tied score, the fastest team wins. The judge expects to see the dog demonstrate willingness and enjoyment. Unlimited communication between handler and dog is encouraged. Handlers may give multiple commands and signals but may not physically guide or correct the dog. Food or toys are not permitted in competition.

## DOG SHOWMANSHIP

**Entry Fee: \$10.00 per entry**

### **Entry # Information:**

**DIVISION #504** - 4-H PRIMARY DOG SHOWMANSHIP (Ribbons Only)

**DIVISION #505** - 4-H NOVICE SHOWMANSHIP

**DIVISION #506** - 4-H JUNIOR SHOWMANSHIP

**DIVISION #507** - 4-H SENIOR SHOWMANSHIP

**DIVISION #508** - FFA NOVICE SHOWMANSHIP

**DIVISION #509** - FFA ADVANCED SHOWMANSHIP

**CLASS #1** – DOG SHOWMANSHIP

**Premiums Offered:** (Not Including Primary) First: \$35.00      Second: \$25.00      Third: \$15.00

### **Awards Offered:**

- 4-H Champion & Reserve Champion Novice Dog Showman
- 4-H Champion & Reserve Champion Junior Dog Showman
- 4-H Champion & Reserve Champion Senior Dog Showman
- FFA Champion & Reserve Champion Novice Dog Showman
- FFA Champion & Reserve Champion Advanced Dog Showman

### **How to Enter:**

- Enter online at [www.vsfair.com](http://www.vsfair.com) click ENTER THE FAIR.
- Online Entries close on **May 1, 2026**.
- Showmanship must be pre-entered. No entry available at ringside.

### **Guidelines:**

- See Livestock Schedule for receiving/release of livestock and Schedule of Events for the Fair.
- All Local and State Rules apply.
- Competition is open to all Junior Exhibitors that reside in Yuba and Sutter County OR are a member of a Yuba-Sutter 4-H, FFA or Grange program or a registered independent only.

#### **4-H Showmanship Definitions:**

- Primary: Those exhibitors who are under nine (9) years of age prior to January 1, 2026 and are currently enrolled in Primary 4-H projects.
- Novice: Those exhibitors who have never shown in any prior Dog Showmanship class at any county, district or state fair. 4-H Spring Fair and/or Primary Showmanship do not qualify as prior showmanship experience. First and second place winners from the Novice class may move to the Junior or Senior class, providing the winner is of the correct age for the class.
- Junior: Those exhibitors thirteen (13) years of age and under prior to January 1, 2026. Junior winners do not advance to the Senior division. There is a Junior Master Showmanship Competition for Junior Exhibitors.
- Senior: Those exhibitors fourteen (14) years of age and older prior to January 1, 2026.

#### **FFA Showmanship Definitions:**

- Novice: Those exhibitors who have never shown in any prior 4-H or FFA Dog Showmanship class at any other county, district or state fair. The first and second place winner in the Novice showmanship class may compete in the Advanced Showmanship Class for cash awards.
- Advanced: Those exhibitors who have had prior 4-H or FFA Dog Showmanship experience.

# 4-H HORSE SHOW

Entry Fee: \$10.00 per class

**SHOW DATE: Saturday, May 16<sup>th</sup>, 2026**

**LOCATION: Yuba County Sheriff Posse Arena, Marysville Road, Browns Valley**

**Check-in at 8:00 am**

**Show at 9:00 am**

**PREMIUMS: (Except Showmanship)**

First: \$20.00

Second: \$15.00

Third: \$10.00

## **Awards Offered:**

Ribbons – 1<sup>st</sup> thru 8<sup>th</sup>

Champion & Reserve Champion Novice Horse Showman Champion & Reserve Champion Junior Horse Showman,  
Champion & Reserve Champion Senior Horse Showman

Class Winners

High Point - Novice, Junior and Senior

## **How to Enter:**

- Enter online at [www.vsfair.com](http://www.vsfair.com) click ENTER THE FAIR.
- Equine Lease Agreements due February 22, 2026.
- Online Entries close on May 1, 2026.

## **Guidelines:**

- See Livestock Schedule for receiving/release of livestock and Schedule of Events for the Fair.
- All Local and State Rules APPLY and will be ENFORCED.
  - Please see below the State Rules Regarding Ownership or Lease
    - Ownership or Lease: Any horse exhibited in the junior or youth division must be owned or leased by the junior exhibitor showing the horse or owned by the junior exhibitor's parent, stepparent, sibling, half-sibling, step-sibling, grandparent, step grandparent, sibling's spouse, half sibling's spouse, step-sibling's spouse or legal guardian (as evidenced by court documents), or owned by the institution in which the junior exhibitor is enrolled as a ward. Separate legal entities, such as family corporations, trusts, or partnerships, are also authorized owners of the youth exhibitor's horse so long as all legal and equitable owners and beneficiaries of the legal entity are individuals specifically authorized by this rule. "Owned" means, in addition to other legitimate methods of acquiring ownership, the bona fide legal ownership obtained for adequate consideration in reasonable relationship with the actual market value of the horse
    - Horse projects must be owned or leased by and under the exhibitor's care and management and under the supervision of the organization in which the project will be shown 120 consecutive days prior to the opening day of fair or event/show if held separate from fair. The official ownership date is the date shown on the receipt of sale unless the animal was bred by the exhibitor. The days are counted prior to the opening day of the fair or event.
      - a. Leased horses cannot be shown for conformation in the halter division.
      - b. For owned horses, proof of ownership must be available at check in.
      - c. For leased horses, the lease, signed by the owner and the 4-H, FFA, Grange or Independent exhibitor, and a clear picture of a side view of the horse or some permanent identification must be filed at least 120 consecutive days prior to opening day of the fair or event/show if held separately from the fair at the county 4-H, FFA, or Grange office or with a person designated by the 4-H Youth Advisor, FFA Advisor or Grange Youth Advisor.
- Exhibitor Ages 9 – 19 are eligible.
- Open to Yuba and Sutter counties only.
- All riders must wear a helmet that meets ASTM/SEI standards while mounted at all times.
- The Fair Uniform is required for Horse Show Participant, with the exception of English Class may wear white or tan britches.
- Classes with less than three (3) riders may be combined or cancelled.

- Parents/Project Leaders will supervise their members and their mounts at all times.
- Must complete Release and Waiver of Liability Agreement and Equine Lease Agreement (if applicable).
  - Novice: participants who have never loped in any show (open, 4-H, breed, gymkhana, schooling, etc.) and meets one of the following criteria: first or second year showing under saddle (does not include lead line) at any show, OR first year in a 4-H horse project and is either 9 or 10 years old as of January 1, 2026.
  - Junior: participants ages 9-13 years old as of January 1, 2026.
  - Senior: participants ages 14-19 years old as of January 1, 2026.

**\*Arena open from 8:30 am to 8:50 am for Dismounted Warmup**

**DIVISION 600 - HORSE SHOWMANSHIP**

**Class**

- 1 Novice
- 2 Junior
- 3 Senior

**DIVISION 601 – RANCH/OPEN HORSE HALTER**

**\*\*This division is not included in the High Point calculation, and no leased horses can participate per State Rules.**

**Class**

- 1 Ranch Horse Type
- 2 All Other

**\*Arena open for 30 minutes after Halter Classes for Mounted Warmup**

**DIVISION 602 – EQUITATION (English/Western)**

**Class**

- 1 Novice (Walk/Trot; Walk Jog)
- 2 Junior (Walk/Trot/Canter; Walk/Jog/Lope)
- 3 Senior (Walk/Trot/Canter; Walk/Jog/Lope)

**DIVISION 603 – PLEASURE (English/Western)**

**Class**

- 1 Novice (Walk/Trot; Walk/Jog)
- 2 Junior (Walk/Trot/Canter; Walk/Jog/Lope)
- 3 Senior (Walk/Trot/Canter; Walk/Jog/Lope)

**DIVISION 604 - HORSEMANSHIP (English/Western – Pattern)**

**Class**

- 1 Novice (Walk/Trot; Walk/Jog)
- 2 Junior (Walk/Trot/Canter; Walk/Jog/Lope)
- 3 Senior (Walk/Trot/Canter; Walk/Jog/ Lope)

**DIVISION 605 –TRAIL (English/Western)**

**\*This will be run simultaneously during the horse show –  
Schedule will be provided**

**Class**

- 1 Novice (Walk/Trot; Walk/Jog)
- 2 Junior (Walk/Trot/Canter; Walk/Jog/Lope)
- 3 Senior (Walk/Trot/Canter; Walk/Jog/Lope)



## **DIVISION 606 – HUNTER HACK**

### **Class**

- 1 Novice (Walk/Trot; Walk/Jog)
- 2 Junior (Walk/Trot/Canter; Walk/Jog/Lope)
- 3 Senior (Walk/Trot/Canter; Walk/Jog/Lope)

## **DIVISION 607 - POLES**

### **Class**

- 1 Novice (Walk/Trot; Walk/Jog)
- 2 Junior (Walk/Trot/Canter; Walk/Jog/Lope)
- 3 Senior (Walk/Trot/Canter; Walk/Jog/Lope)

## **DIVISION 608 - SINGLE STAKE**

### **Class**

- 1 Novice (Walk/Trot; Walk/Jog)
- 2 Junior (Walk/Trot/Canter; Walk/Jog/Lope)
- 3 Senior (Walk/Trot/Canter; Walk/Jog/Lope)

## **DIVISION 609 – BARRELS**

### **Class**

- 1 Novice (Walk/Trot; Walk/Jog)
- 2 Junior (Walk/Trot/Canter; Walk/Jog/Lope)
- 3 Senior (Walk/Trot/Canter; Walk/Jog/Lope)

## **DIVISION 610 – BAREBACK**

### **Class**

- 1 Novice (Walk/Trot; Walk/Jog)
- 2 Junior (Walk/Trot/Canter; Walk/ Jog/Lope)
- 3 Senior (Walk/Trot/Canter; Walk/Jog/Lope)



# MASTER SHOWMANSHIP

**Small Animal: Friday, June 26, 2026 at 1:00 pm**

**Large Animal: Friday, June 26, 2026 at 5:00 pm**

## **Awards Offered:**

4-H Champion & Reserve Champion Junior Small Animal Master Showman  
4-H Champion & Reserve Champion Senior Small Animal Master Showman  
FFA Champion & Reserve Champion Small Animal Master Showman  
4-H Champion & Reserve Champion Junior Large Animal Master Showman  
4-H Champion & Reserve Champion Senior Large Animal Master Showman  
FFA Champion & Reserve Champion Large Animal Master Showman

- No pre-entry is required.
- All class winners (beef, sheep, market goats, swine, dog, rabbit, chicken, turkey, and pygmy goats) of 4-H Junior and Senior Showmanship and FFA Advanced Showmanship are eligible to participate in Master Showmanship.
- If an exhibitor should win in more than one species of showmanship, he/she shall designate the species in which he/she will compete for the Master Showmanship before leaving the show ring. The exhibitor will need to notify the Livestock Superintendent. Only the second place exhibitor can move up to participate in Master Showmanship.
- Animals to be shown for Master Showmanship will be selected by show management.
- Exhibitors will be assigned numbers for animals to be shown.
- Judges decisions are final.
- The Master Showmanship winner will represent the Yuba-Sutter Fair at the 2027 California State Fair County Fair Best of Show. The California State Fair will be hosting a competition for Master Showmanship Exhibitors winning the Round Robin Showmanship at their district or county fairs. All information regarding this competition is available at the fair office or at [www.bigfun.org](http://www.bigfun.org).
- Placing in each master showmanship division will be accomplished by the judge rating the exhibitor 1 to 10; 1 being the lowest rating (needs improvement) and 10 being the highest rating (excellent). The exhibitor with the highest overall score will be the winner of the master showmanship class.
- Score Card: Criteria:

### **Appearance of Exhibitor**

Showing in the Ring	40%
Moving or Leading	20%
Posing	10%
Showing Animal to Best	20%
Advantage	
Poise, Alertness & Attitude	10%

**DIVISION #651 - 4-H JUNIOR MASTER SHOWMANSHIP** (Does not compete at State Fair)

**DIVISION #652 - 4-H SENIOR MASTER SHOWMANSHIP**

**DIVISION #653 - FFA MASTER SHOWMANSHIP**

**CLASS #1 – SMALL ANIMALS** - Pygmy Goats, Rabbits, Chickens, Turkeys and Dogs

**CLASS #2 – LARGE ANIMALS** - Beef, Swine, Sheep and Meat Goats



# FUN ACTIVITIES

## PEE WEE SHOWMANSHIP

Enter at ringside prior to show  
Show Date/Time: **Friday, June 26, 2026 at 10:00 am**  
Entry Fee: \$1.00 per class

- The Pee-Wee Showmanship class is for youth up to 9 years old. Members shall not have passed their 10th birthday by January 1 of the current year.
- Exhibitors shall show an animal already on the grounds and entered in a class at the Fair. Animals shall be appropriate and suitable for the youth exhibitor.
- Exhibitors shall have had the opportunity to work with the animal of choice prior to the Fair.
- Even though this is not a competitive division, the judge will be looking at the overall grooming of the animal, soundness of the animal, ability of the youth to lead and control animal, knowledge by youth of feeding and other animal facts, and the neat appearance of the youth.
- Pee-Wee Showmanship is intended to be a learning experience that involves the family of the youth and is not intended to be a competitive program. The emphasis is on the experience and education. This is not a 4-H sponsored event; do not wear 4-H uniform.
- No cash awards will be given. Participation ribbons will be awarded to all participants.

### **DIVISION #701 - PEE-WEE SHOWMANSHIP**

**CLASS #1 - BEEF**

**CLASS #2 - SWINE**

**CLASS #3 - SHEEP**

**CLASS #4 - GOAT**

**CLASS #5 - PYGMY GOAT**

**CLASS #6 - POULTRY**

# EXHIBITOR RESPONSIBILITY FORM

*This form is included as part of the online entry process and must be initialized on the online entry program during the entry process. A paper copy is NOT required to be turned into the office.*

EXHIBITOR NAME: \_\_\_\_\_ CHAPTER/CLUB: \_\_\_\_\_

Please keep this receipt for your records. Be mindful of "EXHIBITS RECEIVED" and "EXHIBITS RELEASED" dates. Late entries will only be accepted per the local rule late entry policy and the Yuba-Sutter Fair is not responsible for items left following the date of release.

As a **Junior Livestock Exhibitor** at The Yuba-Sutter Fair, I certify by signing this document that: 1) I have provided accurate and true information of my exhibitor eligibility information (age as of January 1<sup>st</sup>, birth date, address, etc.) and all of entry(s); 2) I acknowledge receipt of the 2026 Junior Livestock Competition Guidebook and have read it; 3) I understand that if I violate or some adult or minor violates the rules concerning my disqualification, I will forfeit any awards and premiums, and will lose future eligibility at this or any other subsequent Yuba-Sutter Fair; 4) I have provided the following and correct information on each animal I have entered: Division and Class Number, Name and Registration Number of animal, Breed of Entry, Date of Birth, Sex, Ear Tag, Ear Notch or Tattoo, Name and Registration of Dam, Name and Registration of Sire, and Name of Breeder/Point of Origin. I further understand that failure to provide complete and accurate information of my exhibitor eligibility information AND each and every entry by the designated date, shall result in the disqualification of each entry missing all or part of the information stated above.

**Exhibitor Code of Practice** for participation in The Yuba-Sutter Fair Junior Livestock Competitions. As an animal exhibitor in The Yuba-Sutter Fair Livestock Competition Program, I realize that I am responsible for; 1) the proper care and humane treatment of my animal(s); 2) the production of wholesome food if my exhibit animal(s) are designated for market; and 3) the development of sound moral character in myself. I understand and agree that when I, my parents/legal guardian, supervisor/instructor/leader or any other adult or minor connected with my project(s) or animal(s) break the rules, I agree to live by the final decision of Fair Management regarding disqualification of myself and/or my animal(s), loss of premium awards, loss of future eligibility, and forfeiture of any award(s).

## **Participant (Junior Exhibitor), Parent or Guardian, 4 H/FFA/Independent/Instructor/Supervisor Agreements of Responsibility and Liability:**

It is clearly understood that The Yuba-Sutter Fair and its officials, officers, directors, employees, and agents (hereinafter collectively referred to as "YSF") shall not be responsible for any damages, loss or injury to any person or property which is caused directly or indirectly for any reason. The exhibitor, owner, parents or legal guardian, their agents and/or representatives (hereinafter collectively referred to as "Participants") agree to indemnify and hold YSF harmless of any damages, injury, or loss suffered during or in connection with The Yuba-Sutter Fair Junior Livestock Show and Auction. In the event the YSF is subject to any expense or liability, including, but not limited to, consultant fees, legal or court costs, YSF management labor and expenses, expenses and/or costs for blood, tissue, urine, hide and/or carcasses sampling and testing incurred as a result of YSF rule and regulation violation and all agreements thereunder, including, but not limited to, unethical fitting, filling, meat tampering, illegal or non-approved use of drugs, medication and/or prohibited substance(s) as a result of Participant's involvement in The Yuba-Sutter Fair Junior Livestock Show and Auction, Participants, or if participant is a minor, Participant's parent or guardian, shall indemnify and hold harmless The Yuba-Sutter Fair for all damages, expenses and liabilities incurred as a result thereof. Participants may also be subject to criminal charges. The Participants will have full control, custody, care, and feeding of any animal(s) and/or personal property which are brought on or about the premises of The Yuba-Sutter Fairgrounds. It is clearly understood between Participants and The YSF that, as a material condition to any participant entering or showing at The Yuba-Sutter Fair Junior Livestock Show and Auction, YSF will at no time have control, custody, or care of any animal(s) and/or personal property which are brought on or about The Yuba-Sutter Fairgrounds. For overall working of the show, the Participants will maintain control, custody, care, and feeding of any and all animal(s) and/or personal property in accordance with the rules and regulations of The Yuba-Sutter Fair Junior Livestock Show and Auction, and in no way will YSF be responsible for any loss or damage that may occur or be caused by any animal or personal property. By submitting an application for entry, Participants agree to comply with all rules and regulations governing The Yuba-Sutter Fair Junior Livestock Show and Auction as published in the 2026 Yuba-Sutter Fair Junior Livestock Competition Guidebook. Further, Participants certify to the accuracy of the total ownership of the entry for the prescribed number of days by The Yuba-Sutter Fair, continuous possession and care, and the provisions of the rule against unethical fitting, filling, and/or alterations of conformation and color of animal(s), meat tampering and illegal or non-approved use of drugs, medication, and/or prohibited substances on the entered animal(s). I hereby certify that all of the information submitted with my application to compete in the Junior Livestock Show is true and correct. I have been provided and read the electronic version (or a hardcopy) of the 2026 Yuba-Sutter Fair Junior Livestock Competition Guidebook, and will accept and comply with the rules as written.

**As an animal exhibitor in The Yuba-Sutter Fair Junior Program:**

I believe my participation should demonstrate my own ability, knowledge and skill as a feeder and fitter of my show animal(s). I understand the need to be responsible for developing the skills necessary to take my animal(s) from the farm to the showing. I will assist other juniors, if asked, or request assistance from other juniors exhibiting in the Junior Show. I will follow the competition rules, and will not use abusive, questionable or unethical techniques in the feeding, caring and showing of my animal(s). I will not resort to fraudulent, illegal or deceptive practices such as filling or when fitting and preparing the animal for show. I also will not allow my parents, supervisor/leader or any other adult or minor to employ such practices to my animal(s). I have read and understand the rules and regulations found in the 2026 Junior Livestock Competition Guidebook and I have asked my parents and the supervisor/leader of my project to not break the rules or make exception on my behalf. I want my animal project to be an example of how to accept what life has to offer, good or bad, and how to live with the outcome. I realize that I am responsible for the proper care and humane treatment of my animal(s); the production of wholesome food if my exhibit animal is designated for market; and the development of sound moral character in myself. I understand and agree that when I, my parents, my supervisor or leader or any other adult or minor connected with my project or animal(s) break the rule, I agree to live by the final decision of the Fair Management regarding disqualification of myself and/or my animal(s), loss of premium awards and my loss of future eligibility, and forfeiture of any award(s).

**As an Instructor/Leader/Parent/Legal Guardian** of an exhibitor at The Yuba-Sutter Fair, I certify that by signing this document I acknowledge that the Junior Exhibitor has been provided and read the electronic version (or a hardcopy) of the 2026 Yuba-Sutter Fair Junior Livestock Competition Guidebook. I agree and understand that if the Junior or some adult or minor violated the rules concerning the Junior Exhibitor's animal(s), that the Junior Exhibitor and/or the Junior Exhibitor's animal(s) may be subject to any or all of the following: disqualification; forfeiture of awards and premiums; loss of future eligibility at this or any other subsequent Yuba-Sutter Fair. The information provided on all of the entry forms is true, accurate, and complete. As a supervisor/leader, I have read and understand the rules and regulations of the 2026 Yuba-Sutter Fair Junior Livestock Competition Guidebook as it relates to the Junior Exhibitor competition, and agree with the same. I understand and agree that my child or the person for whom I am guardian may be sent home if the child is not underneath adult supervision at all times while on the grounds of the Yuba-Sutter Fair.

By signing this document: I as the **Species Instructor/Species Leader/Parent/Legal Guardian** of this exhibitor hereby certify that this exhibitor is eligible to compete with the entry(s) listed. I have read and understand the Exhibitor Code of Practice. As an adult associated with this Junior Exhibitor project(s) and animal(s), I will encourage the Junior Exhibitor to comply with the rules. I will not take any action or assist others to violate the rules contained in the 2026 Junior Livestock Competition Guidebook governing the animal(s) entered by the Junior Exhibitor. I have read understood, and agree to the terms and conditions of the Agreement of Responsibility and Liability and agree to comply with the same. By signing the Signature Acquisition Form, I agree as an adult associated with this junior exhibitor project and animal(s) that I will encourage the exhibitor to comply with the rules. Further, I will not take any action or assist others to violate the rules contained in the 2026 Yuba-Sutter Fair Junior Livestock Competition Guidebook.

Exhibitor's Signature \_\_\_\_\_ Date \_\_\_\_\_

"I hereby certify that all of the information submitted with my application to compete in the livestock entry(s) submitted by myself is true and correct. I have been provided and read the electronic version (or a hardcopy) of the Exhibitor Responsibility Form & the 2026 Junior Livestock Competition Guidebook, and will accept and comply with the rules as written."

Leader/Instructor's Name \_\_\_\_\_ Date \_\_\_\_\_ Leader/Instructor's Signature \_\_\_\_\_  
\_\_\_\_\_ Date \_\_\_\_\_

"I hereby certify that this exhibitor is eligible to compete with the entry(s) entered in the 2026 Yuba-Sutter Fair."

Parent/Guardian Name \_\_\_\_\_ Date \_\_\_\_\_ Parent/Guardian Signature \_\_\_\_\_  
\_\_\_\_\_ Date \_\_\_\_\_

"I hereby certify that this exhibitor is eligible to compete with the entry(s) submitted in the 2026 Yuba-Sutter Fair and agree to abide by all the local & state rules and agree to the terms and conditions as written in the Exhibitor Responsibility Form."