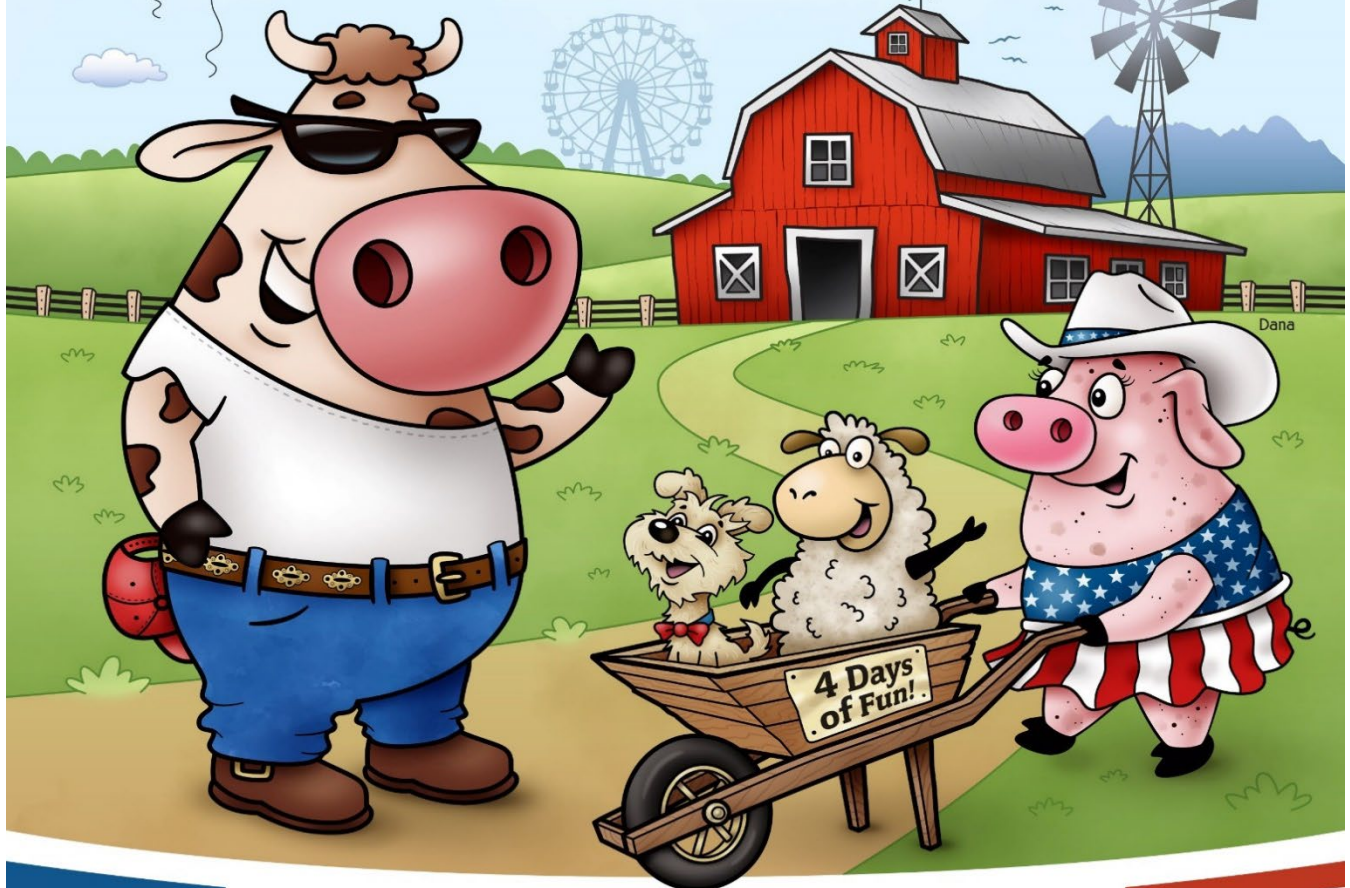


STILL EXHIBITS
2026 COMPETITION GUIDE

YUBA-SUTTER
FAIR

June 25-28
2026



BARN IN **THE USA**



GO ONLINE FOR FULL SCHEDULE AND DETAILS: WWW.YSFAIR.COM



STILL EXHIBITS

2026 COMPETITION GUIDE

Showcasing our area's best!

For more than 160 years the Yuba-Sutter Fair has been showcasing the talents and achievements of our local communities. The friendly competitions are designed to inspire the exhibitors and highlight their achievements!

Entering projects in the Yuba-Sutter Fair Still Exhibits Competition allows you the opportunity to showcase your efforts and creative talents.

We have developed many new classes and offering higher premium payouts and more awards to provide a greater incentive and opportunity for people of all ages to enter their projects!

More than 50,000 visitors are expected to visit the Yuba-Sutter Fair this year. Your work is an integral part of the fair's celebration, and we look forward to placing your talent on display at the Yuba-Sutter Fair from June 25-28, 2026.

We encourage you to enter today and begin making lasting memories for yourself, and for the thousands of our Fair patrons!

Good luck to all exhibitors!

Sincerely,

David Dillabo

David Dillabo

Chief Executive Officer

13th District Agricultural Association Board of Directors

Board Chair – Kulwant Johl
Karm Bains
Erin Cucchi
Jill LeVake
Jennifer Matteoli
Alice Munger
Joe Serger
Andrew Stresser

13th District Agricultural Association Staff

Chief Executive Officer
David Dillabo

Entry Representative
Sherrie Skaggs

Office Assistant
Rayna Barden

Maintenance Staff
Todd Peters

TABLE OF CONTENTS

2026 COMPETITION GUIDE

What's New in 2026?	6
Important Information to Remember	6
Key Dates & Deadlines	7
Contact Info	7
Daily Still Exhibit Schedule	8
Local Rules	11

ADULT STILL EXHIBITS DEPARTMENT 13

Adult – Home Arts Divisions 13

Preserved Foods	14
Home Brew & Wine	17
Baking and Confections	19
Clothing and Textiles	22
Quilts	24
Quilt Block Contest	26
Arts, Crafts & Hobbies	27

Adult – Fine Arts Divisions 30

Novice/Amateur Art and Sculptures	31
Semi-Professional Art and Sculptures	32
Professional Art and Sculptures	33
Wine & Canvas	34

Adult – Arts & Crafts Special Contests 35

Pop Art	35
Garbage Can Art	36
Photo Cut-Out Props	37
Barn Quilts	38

Adult – Photography Divisions 39

Novice/Amateur Photography	40
Professional Photography	41

Adult – Floriculture Divisions 43

Potted Plants	43
Floral Arrangements	45
Cut Flower Show	46

- Adult – Floriculture Special Contests** 48
 - Flower Garden Competition 48
 - Flowering Wine Barrel Competition 49
 - Flowering Wagon/Wheel Barrel Competition 50

- Adult – Agriculture/Horticulture Divisions** 52
 - Vegetables and Deciduous Fruits 53
 - Nuts 55
 - Eggs 55

- YOUTH & TEEN STILL EXHIBITS DEPARTMENT** 56
 - Youth & Teen – Home Arts Divisions** 57
 - Preserved Foods 58
 - Baking & Confections 60
 - Clothing & Textiles 63
 - Arts, Crafts & Hobbies 65
 - Paintings & Drawings 67
 - Coloring Contest 69
 - School Projects 70

 - Youth & Teen – Arts & Crafts Special Contests** 71
 - Pop Art 71
 - Garbage Can Art 72
 - Photo Cut-Out Props 73
 - Barn Quilts 74
 - School Spirit 75

 - Youth & Teen – Photography Divisions** 76
 - Black & White Photography 77
 - Color Photography 77
 - Selfies 78

 - Youth & Teen – Floriculture Divisions** 79
 - Floral Arrangements 80
 - Cut Flower Show 81

 - Youth & Teen – Floriculture Special Contests** 83
 - Flowering Wine Barrel Competition 84
 - Flowering Wagon/Wheel Barrel Competition 85

 - Youth & Teen – Agriculture/Horticulture Divisions** 86
 - Vegetables & Deciduous Fruits 87
 - Novelty Produce 89
 - Produce Art 89
 - Plants 90
 - Nuts 91
 - Eggs 91

Yuba-Sutter Counties Commodities Competition 92

4-H & FFA INDUSTRIAL/VOCATIONAL SKILLS DEPARTMENT 94

4-H & FFA Industrial/Vocational Skill Project Divisions 95

Industrial/Vocational Skill Projects (*Not in auction*) 95

Industrial/Vocational Skill Live Auction Projects 96

Industrial/Vocational Skill Silent Auction Projects 97

4-H Archery Divisions 99

Recurve Bow 100

Compound Bow without Sights 101

Compound Bow with Sights 101

Still Exhibit Entry Form Print as needed

What's New in 2026?

There are many new updates and changes for the 2026 Program. Many of the significant changes and updates are listed below as a quick point of information. Details on the changes can be found in the Competition Guidebook.

- ✓ We have eliminated the Sweepstakes Award.
- ✓ New Cut Flowers have been added to the Divisions.



IMPORTANT DATES to remember

Online registration opens January 1

Entry Deadline	Sunday, May 31, by Midnight
Entry Delivery	Friday, June 12, 2pm - 8pm
.....	Saturday, June 13, 8 am-6 pm
Entry Pickup	Monday, June 29, 9am-6 pm

Key Dates & Deadlines

Contact: Sherrie Skaggs

Exhibits Representative

Phone: (530) 674-1280 & E-mail: sskaggs@ysfair.com

January 1	Online Entry Registration Available
May 31	ENTRY DEADLINE For all Still Exhibits, Vocational /Industrial Projects & Archery
June 12-13	DELIVERY OF EXHIBITS Deliver all entries of: Preserved Foods, Clothing & Textiles, Arts & Crafts, Quilts, Hobbies & Collections, Computer Projects, Home Furnishing, Photography, Fine Arts
June 14	JUDGING OF STILL EXHIBITS Preserved Foods, Clothing & Textiles, Arts & Crafts, Quilts, Hobbies & Collections, Computer Projects, Home Furnishing, Photography, Fine Arts
June 19	DELIVERY OF EXHIBITS Deliver all Vocational / Industrial Projects
June 22 - 24	EXHIBIT SETUP Flower Gardens, Flowering Wheel Barrels, Wine Barrels
June 24	DELIVERY OF EXHIBITS Floriculture, Potted Plants, Ag Horticulture, Vegetables, Deciduous Fruits, Nuts, Eggs, Baked Goods & Confections
June 25	Produce Characters, Thursday's Daily Arrangements & Cut Flowers JUDGING OF VOCATIONAL/INDUSTRIAL PROJECTS
June 25	DELIVERY OF EXHIBITS Friday's Daily Arrangements & Cut Flowers
June 26	DELIVERY OF EXHIBITS Saturday's Daily Arrangements & Cut Flowers
June 27	DELIVERY OF EXHIBITS Sunday's Daily Arrangements & Cut Flowers
June 28	PICKUP EXHIBITS All Still Exhibits are available for pickup

Still Exhibits Schedule

(Subject to Change)

Friday, June 12, 2026

2 pm – 8 pm

Entry Delivery: Deliver the following exhibits to Franklin Hall

- Preserved Foods Entries
- Clothing & Textiles Entries
- Arts & Crafts Entries
- Quilts Entries
- Hobbies & Collections Entries
- Computer Project Entries
- Home Furnishing Entries
- Photography Entries
- Fine Art Entries

Saturday, June 13, 2026

9 am – 6 pm

Entry Delivery: DEADLINE to deliver the following exhibits to Franklin Hall

- Preserved Foods Entries
- Clothing & Textiles Entries
- Arts & Crafts Entries
- Quilts Entries
- Hobbies & Collections Entries
- Computer Project Entries
- Home Furnishing Entries
- Photography Entries
- Fine Art Entries

Sunday, June 14, 2026

9 am

Judging: Judging of Still Exhibits (Closed to the public)

3 pm – 6 pm

Pick-up of all open jar preserved foods at Franklin Hall

Monday, June 15, 2026

9 am - 6 pm

Pick-up of all open jar preserved foods at Franklin Hall

Friday, June 19, 2026

9 am – 5pm

Entry Delivery: Deliver all Vocational/Industrial Projects to Franklin Hall

Still Exhibits Schedule

(Subject to Change)

Monday, June 22, 2026

10 am – 6 pm **Entry Setup:** Flower Garden, Flowering Wheel Barrel & Wine Barrel Competition Set-up

10 am – 6 pm **Entry Setup:** Commodities Display Set-up

Tuesday, June 23, 2026

10 am – 6 pm **Entry Setup:** Flower Garden, Flowering Wheel Barrel & Wine Barrel Competition Set-up

10 am – 6 pm **Entry Setup:** Commodities Display Set-up

Wednesday, June 24, 2026

10 am – 6 pm **Entry Setup:** Flower Garden, Flowering Wheel Barrel & Wine Barrel Competition Set-up

10 am – 6 pm **Entry Setup:** Commodities Display Set-up

10 am – 6 pm **Entry Delivery:** Deliver the following exhibits to the Franklin Hall

- Floriculture
- Potted Plants
- Ag Horticulture
- Vegetables
- Deciduous Fruits
- Nuts
- Eggs

4 pm – 8 pm **Entry Delivery:** Deliver the following exhibits to the Franklin Hall

- All Baked Goods & Confection Entries

Thursday, June 25, 2026 “Opening Day of Fair”

9 am **Judging:** Judging of Vocational Projects

10 am – 11 am **Entry Delivery:** Deadline to deliver the following exhibits to the Franklin Hall

- Produce Characters
- Thursday's Entries of Daily Arrangements & Cut Flowers

Still Exhibits Schedule

(Subject to Change)

Friday, June 26, 2026

- 10 am – 11 am **Entry Delivery:** Deadline to deliver the following exhibits to the Franklin Hall
- Friday's Entries of Daily Arrangements & Cut Flowers

Saturday, June 27, 2026

- 10 am – 11 am **Entry Delivery:** Deadline to deliver the following exhibits to the Franklin Hall
- Saturday's Entries of Daily Arrangements & Cut Flowers

Sunday, June 28, 2026

- 10 am – 11 am **Entry Delivery:** Deadline to deliver the following exhibits to the Franklin Hall
- Sunday's Entries of Daily Arrangements & Cut Flowers

Monday, June 29, 2026

- 9 am – 6 pm **Entry Pickup** – The following exhibits can be picked up at Franklin Hall
- Preserved Foods Entries
 - Clothing & Textiles Entries
 - Arts & Crafts Entries
 - Quilts Entries
 - Hobbies & Collections Entries
 - Computer Project Entries
 - Home Furnishing Entries
 - Photography Entries
 - Fine Art Entries

- 9 am – 6 pm **Entry Pickup** – The following exhibits can be picked up at Franklin Hall
- Vocational/Industrial Project Entries

- 9 am – 6 pm **Entry Pickup** – The following exhibits can be picked up at Franklin Hall
- Floriculture
 - Potted Plants
 - Ag Horticulture
 - Vegetables
 - Deciduous Fruits
 - Nuts
 - Eggs

Local Rules

General Rules

1. All State and Local Rules apply.
2. No late entries will be accepted.
3. No refunds of entry fees.
4. The California Fairs State Scorecards apply to all exhibits and entries, unless otherwise specified.
5. All information contained in the Yuba-Sutter Fair Competition Guidebook is subject to be amended and/or changed.
6. The owner or authorized agent(s) must present exhibits in person. Exhibits will not be accepted by mail. Please note the days and hours that exhibits will be received and judged in your division, as major changes may have been made in that area.
7. No entry will be accepted where an exhibitor prescribes conditions under which he/she will exhibit.
8. Fair Management is not responsible for finding errors on your entry form. Management may refuse entries but will do so without prejudice or discrimination.
9. Failure of any exhibitor to maintain his/her exhibit to the satisfaction of the Fair Management may result in removal of the exhibit, the cancellation of awards, premiums and Auction proceeds.
10. All judges are provided by the Yuba-Sutter Fair Management and, in every instance, the decision made by the Judge is final.
11. Cash awards will be paid only as recorded on signed Judging Sheet and only to the exhibitor.
12. No exhibitor shall receive more than two cash awards in any one class using American judging system.
13. When an exhibitor earns more than two awards in a class, the exhibitor will receive the two highest cash awards, and the lesser cash awards will be moved down the placings to other exhibitors.
14. Placing of ribbons does not guarantee correct judging placement. Only the official placing stated on the judging sheet(s) constitutes the final placement.
15. No Exhibitor or spectator is allowed in the building while judging takes place.
16. Exhibits will remain in place for the duration of the Fair.
17. Make all checks payable to: YUBA-SUTTER FAIR (Returned checks will be subject to a \$35 fee)
18. NO motorized scooters, razor scooters, bicycles, skateboards or hover boards are allowed on the fairgrounds or in the livestock area.

Exhibitor Responsibility

19. By submitting an application for entry, participants agree to comply with all rules and regulations governing the Yuba-Sutter Fair as published in the Competition Guidebook.
20. The fair will not be responsible for exhibits left 24 hours after the close of the fair. All exhibits and equipment MUST be claimed and removed within 5 days. After 5 days the items become property of the fair.

21. Premium checks must be cashed by **December 31, 2026**. No check will be reissued or the time extended. Questions on discrepancies in check amounts must be made prior to **July 31, 2026**. No premium adjustment will be made after that date.
22. Each exhibitor is responsible for any loss, consequential or otherwise, injury or damage done to or occasioned by, or arising from, any animal or article exhibited by him/her. Exhibitors shall indemnify the 13th District Agricultural Association and the counties of Yuba and Sutter against all legal proceedings in regard thereto.
23. A Junior Exhibitor, who in the opinion of Fair Management, 4-H Leaders or FFA Advisor, fails to conform to or accept the set standards of conduct as designated by his/her organization or by the 13th DAA Rules, may be disqualified from competition and removed from the fairgrounds along with his/her entries. This decision may be made at the discretion of his/her leader, advisor or Fair Management.
24. The Yuba-Sutter Fair has the right to refuse entry forms signed by unauthorized leaders and/or advisors. Before entry deadline, Fair management also may ask that the community leader and/or County 4-H advisor to sign/authorize entries if proof and/or suspicion of wrong-doing has occurred.
25. Vehicles belonging to participant/volunteers are requested to park in the parking lot and walk onto the grounds to their assigned building.
26. Glass containers are not allowed on the grounds.
27. Animals are not permitted on the grounds unless they are part of an authorized show or exhibit. Service Animals are the only exception. Guide Dog puppies may be on the grounds and must comply with Fair Board Policy.

Exhibitor Divisions

28. Adult Divisions: For exhibitors nineteen (19) years and older.
29. Youth and Teen Divisions: For exhibitors ages five (5) to eighteen (18) years prior to January 1, 2026.

Fire Proofing of Exhibits

30. Display materials and decorations must be made from flameproof material or treated and maintained in a flame-retardant condition.
31. One-way to accomplish fireproofing is to buy suitable fireproofing material from a hardware store. You can spray or soak your paper, cloth, etc. in this material to make it flameproof or fire retardant.
32. For more information on fireproofing, call the Yuba City Fire Department and ask for the Fire Prevention Officer.



ADULT STILL EXHIBITS DEPARTMENT

Rules:

- Eligibility: Open to California residents, ages 19 or older.
- Judging: Unless otherwise noted, all divisions in the Adult Still Exhibits Department will be judged using the American Judging System. Each entry in a class is judged in comparison to other entries in the class. Awards are given according to relative merit with the potential for no more than one first, one second and one third place.
- Enter exhibits online at ysfair.com
- **Entry Deadline: May 31, 2026**
- No late entries will be accepted.
- All Local & State Rules apply.
- Entries must have been prepared by the exhibitor.
- The Judge has the authority to transfer any entry from one Division/Class to another. The Judge's decision is final.
- Any Other Classes are for those items that do not fit into the classes described in the Division and Class listing. Items entered in the Any Other Class must not fit into any other class available in the Division and Class listings.

ADULT PRESERVED FOODS



Awards Offered:

- **BEST OF SHOW:** \$25.00 (One awarded for Divisions 1-5 and one awarded for Divisions 6-7)
- **RESERVE BEST OF SHOW:** \$15.00 (One awarded for Divisions 1-5 and one awarded for Divisions 6-7)
- **BEST OF DIVISION:** Rosette

Premiums Offered: First: \$5.00 Second: \$4.00 Third: \$2.00

Entry Information:

- Entry Fee: \$1.00
- Entry Limit: No Limit
- Entries are to be delivered to the Franklin Hall.
- See Still Exhibit Schedule for receiving of entry, judging and pick-up dates/times.

Rules:

- Eligibility: Open to California residents, ages 19 or older.
- All entries in this division must be home prepared and processed by the exhibitor within one (1) year of the opening date of the Fair.
- Items, which have been shown at any previous Yuba-Sutter Fair, are NOT eligible.
- Standard Jar: A container specifically or specially designed for canning purposes. Paraffin seals will not be accepted. All canning must be sealed in jars.
- Containers to use:
 - Fruits and Vegetables- Pint or quart, clear glass, narrow or wide mouth Mason jar.
 - Jams, Jellies, and Preserves- Pint or ½ pint, clear glass jelly jars (sealed with a lid), or clear mason jars.
- Non-Acid Foods- All vegetables must be canned under pressure. Low acid fruit, such as figs, should be made with more acid by adding lemon juice as directed in the University Agricultural Extension Service leaflet, USDA Complete Guide to Home Canning (2015).
- Tomatoes and fruits (not including their juices) must be processed in a boiling water bath.

- Exhibits must be accurately labeled on the bottom of the jar with exhibitor's name and name of item.
- Exhibitors are required to bring two (2) jars of each entry.
- One will be used for the actual judging process; the other will be used for display.
- Open jars may be picked up on Monday, **June 15, 2026** from 9 am – 6 pm in Franklin Hall only.
- Any Other classes are for those items that do not fit into the classes described in the Division and Class listing.

DIVISION 1 – CANNED FRUIT

Class

- 1 Applesauce
- 2 Peaches
- 3 Plums
- 4 Strawberries
- 5 Any Other (specify)

DIVISION 2 - CANNED VEGETABLES

Class

- 1 Asparagus
- 2 Beans, green or waxed
- 3 Corn
- 4 Olives
- 5 Squash (any variety)
- 6 Tomatoes, whole pack
- 7 Any Other (specify)

DIVISION 3 - JAMS

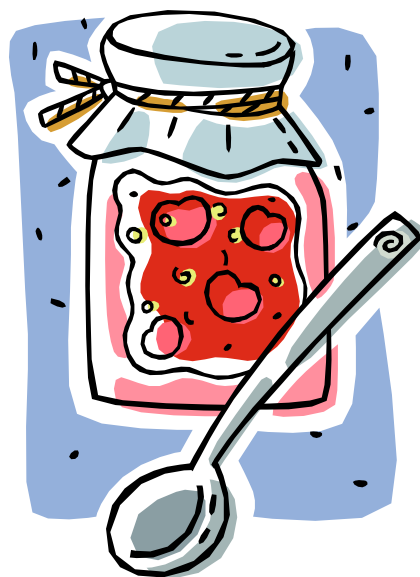
Class

- 1 Apricot
- 2 Peach
- 3 Plum
- 4 Grape
- 5 Strawberry
- 6 Raspberry
- 7 Blackberry
- 8 Any Other Combination
- 9 Any Other (specify)

DIVISION 4 – JELLIES

Class

- 1 Apple
- 2 Berry (any)
- 3 Grape
- 4 Plum
- 5 Pomegranate
- 6 Any Other Combination
- 7 Any Other (specify)



DIVISION 5 - MARMALADES / BUTTER

Class

- 1 Marmalade, Orange
- 2 Marmalade, Any Other (specify)
- 3 Apple Butter
- 4 Apricot Butter
- 5 Butter, Any Other (specify)



DIVISION 6 - PICKLES, SAUCES, RELISHES & DRIED FOOD PRODUCTS

Vegetable Pickles

Class

- 1 Cucumber
- 2 Bread & Butter pickles
- 3 Peppers
- 4 Any Other (specify)
- 5 Vinegar, Any

Relishes

Class

- 6 Any (specify)

Dried Food Products

Class

- 7 Fruit
- 8 Jerky (specify)
- 9 Vegetables
- 10 Herbs

Homemade Salsa

Class

- 11 Salsa – Hot
- 12 Salsa - Mild
- 13 Fruit Salsa
- 14 Any Other (specify)



DIVISION 7 - MISCELLANEOUS

Class

- 1 BBQ Sauce
- 2 Spaghetti Sauce
- 3 Fruit Sauce, Any
- 4 Any Other (specify)

ADULT HOME BREW & WINE

Awards Offered:

- **BEST OF SHOW:** \$50.00
- **RESERVE BEST OF SHOW:** \$25.00
- **BEST OF DIVISION:** Rosette

Premiums Offered: First: \$25.00 Second: \$15.00 Third: \$10.00

Entry Information:

- Entry Fee: \$10.00
- Entry Limit: No Limit
- Entries are to be delivered to the Franklin Hall.
- See Still Exhibit Schedule for receiving of entry, judging and pick-up dates/times.

Rules:

- Eligibility: Open to California residents, ages 21 or older.



WINE DIVISION

Wine Requirements:

- Exhibitor must bring two 750 ml. cork or screw finished bottles. One un labeled bottle to be filled with the wine for competition and one filled with appropriate colored water for display purposes only. Wine bottle with colored water will be used for the wine label competition. Open bottle will be disposed of after judging.
- Wine must be personally produced by the exhibitor. Grapes do not have to be grown by exhibitor.

DIVISION 8 – WHITE WINE

Class

- 1 Chardonnay
- 2 Sauvignon Blanc
- 3 Any Other (specify)

DIVISION 9 – RED WINE

Class

- 1 Cabernet Sauvignon
- 2 Zinfandel
- 3 Any Other (specify)

DIVISION 10 – WINE LABEL

Class

- 1 Wine Label



HOMEBREW DIVISION



Homebrew Requirements:

- Entries for Home Brew shall consist of two (2) 12-ounce bottle. Six-ounce bottles will be accepted for Barley and Meads only.
- Home Brew entries may not be brewed wholly or in part using facilities or equipment of a commercial brewery.
- Bottles must be unlabeled. Bottles with labels will not be accepted. Bottles may be sealed with spring fitted stoppers or crown caps. Any bottles not conforming to the show rules will be eliminated.
- Accurate and legibly written label, including exhibitor's name and address, entry division and class number, must be attached, on bottom of bottles only.

DIVISION 11 – HOMEBREW

Class

- 1 New England Style IPA/Hazy
- 2 Internal Style IPA
- 3 West Coast Style IPA
- 4 Standard American Lager
- 5 International Lager
- 6 International Style Pilsner
- 7 American Style Wheat/Cream
- 8 American Pale Ale
- 9 Porter/Stout/Dark Lager
- 10 Blonde/Golden Ale
- 11 American Amber/Brown
- 12 American Style Fruit Beer
- 13 Mead/Cider
- 14 Any Other (specify)

DIVISION 12 – HOMEBREW LABEL

Class

- 1 Homebrew Label

ADULT BAKING & CONFECTIONS



Awards Offered:

- **BEST OF SHOW:** \$25.00 (One awarded for Overall Baking & Confections)
- **RESERVE BEST OF SHOW:** \$15.00 (One awarded for Overall Baking & Confections)
- **BEST OF DIVISION:** Rosette

Premiums Offered: First: \$5.00 Second: \$4.00 Third: \$2.00

Entry Information:

- Entry Fee: \$1.00
- Entry Limit: No Limit
- Entries are to be delivered to the Franklin Hall.
- See Still Exhibit Schedule for receiving of entry, judging and pick-up dates/times.

Rules:

- Eligibility: Open to California residents, ages 19 or older.
- Entries must have been home prepared by the exhibitor.
- Commercial mixes will be disqualified.
- Entries that spoil during the Fair will be removed.

Amounts:

- Muffins ½ dozen plus 1
- Cookies ½ dozen plus 1
- Cupcakes ½ dozen plus 1
- Cake-pops ½ dozen plus 1
- Cakes 2/3 cake plus 1 slice
- Breads 2/3 loaf plus 1 slice
- Pie One whole pie no larger than 8", plus 1 sample piece
- Biscotti 6 pieces plus 1
- Confections ½ pound plus 1
- Suckers ½ dozen plus 1

Wrapping Instructions:

- Bread - Must be exhibited in a self-sealing bag. No plate or cardboard.
- Biscuits & Rolls - Must be on a paper plate no larger than 6" in size and placed in the smallest self-sealing bag possible.
- Cookies, Confections and Candies must be on a five (5) or six (6) inch paper plate placed in one (1) quart size sealed bag.
- Cakes: Loaf, Pound - Wrap in clear plastic on a cardboard base, base to extend no more than 1" beyond cake.
- Pies - Must be smoothly wrapped in clear plastic.
- Samples for judging must be in small self-sealing bags and securely taped to the outside of the entry.

DIVISION 13 – BREADS

Class

- 1 Banana Bread
- 2 Zucchini Bread
- 3 Pumpkin Bread
- 4 Corn Bread
- 5 Doughnuts
- 6 Gluten Free
- 7 Any Other (specify)



DIVISION 14 – BISCUITS & ROLLS

Class

- 1 Biscuits
- 2 Croissants
- 3 Muffins
- 4 Cinnamon Rolls
- 5 Any Other (specify)

DIVISION 15 – LAYER CAKE-FROSTED

HOW TO EXHIBIT:

- Cake must be two (2) layers
- Filling may be same as frosting or different
- One-minute frostings discouraged

Class

- 1 Cake Roll
- 2 Any Other (specify)

DIVISION 16 - CAKES – NOT FROSTED

Class

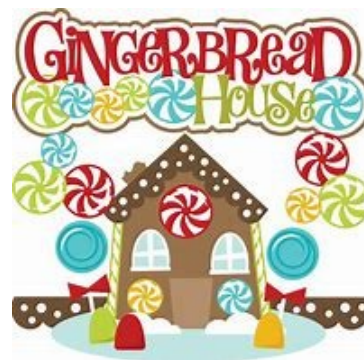
- 1 Coffee Cake
- 2 Carrot Cake
- 3 Sponge Cake
- 4 Gluten Free
- 5 Any Other (specify)

DIVISION 17 – DECORATED FOODS

(Styrofoam or plastic base acceptable)

Class

- 1 Any Holiday
- 2 Gingerbread or Graham Cracker House
- 3 Cupcakes
- 4 Cake-pops
- 5 Wedding Cake
- 6 Happy Birthday Cake
- 7 Cookies
- 8 Any Other (specify)



DIVISION 18 – COOKIES

Class

- 1 Bar (specify)
- 2 Brownies – Frosted
- 3 Brownies - Unfrosted
- 4 Snicker Doodle Cookie
- 5 Peanut Butter Cookie
- 6 Chocolate Chip Cookie
- 7 Oatmeal Cookie
- 8 Gingerbread Cookie
- 9 Gluten Free Cookie
- 10 Any Other Cookie (specify)

DIVISION 19 - CONFECTIONS

Class

- 1 Chocolate Fudge
- 2 Taffy
- 3 Truffles
- 4 Popcorn
- 5 Nut Brittle
- 6 Any Other (specify)

DIVISION 20 - PIES & PASTRIES

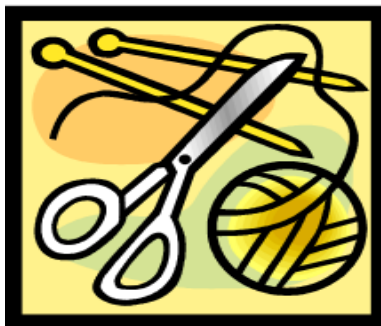
(Pies – One crust or Two)

Class

- 1 Apple
- 2 Cherry
- 3 Lemon
- 4 Pumpkin
- 5 Berry
- 6 Cream
- 7 Blueberry
- 8 Rhubarb
- 9 Other Fruit (specify)
- 10 Any Other (specify)



ADULT CLOTHING & TEXTILES



Awards Offered:

- **BEST OF SHOW:** \$25.00 (One awarded overall Clothing & Textiles)
- **RESERVE BEST OF SHOW:** \$15.00 (One awarded overall Clothing & Textiles)
- **BEST OF DIVISION:** Rosette

Premiums Offered: First: \$5.00 Second: \$4.00 Third: \$2.00

Entry Information:

- Entry Fee: \$1.00
- Entry Limit: No Limit
- Entries are to be delivered to the Franklin Hall.
- See Still Exhibit Schedule for receiving of entry, judging and pick-up dates/times.

Rules:

- Eligibility: Open to California residents, ages 19 or older.
- All entries must have been home produced by the exhibitor within one (1) year of June 25, 2026 to be eligible for entry, judging and exhibit.
- Sweater sets, place mat sets, etc. must be pinned together to guard against loss.
- Functional toys and dolls must be child safe.
- Please have your name; address and telephone number sewn in an unobtrusive seam in the garments and on the quilt-hanging strip.
- If you do not find a class for your entry in those listed under the Division where it should be entered, enter the item under Any Other.

DIVISION 21 - KNITTED ARTICLES

Class

- 1 Afghan
- 2 Baby Item
- 3 Shawl or scarf
- 4 Wearable's
- 5 Any Other (specify)

DIVISION 22 - CROCHETED ARTICLES

Class

- 1 Afghans
- 2 Baby Item
- 3 Doily, Runner, Dresser Scarf
- 4 Shawl or scarf
- 5 Hats
- 6 Any other (specify)

DIVISION 23 – HOUSEHOLD TEXTILES

Class

- 1 Crocheted
- 2 Cross-stitched
- 3 Embroidered
- 4 Appliqué
- 5 Any Other (specify)

DIVISION 24 – TOYS AND HOUSEHOLD ITEMS

(Enter dolls only in Crafts and Hobbies section)

Class

- 1 Stuffed Animal
- 2 Any Other (specify)

DIVISION 25 – HOLIDAY TEXTILES

Class

- 1 Ornaments
- 2 Table Decoration
- 3 Any Other (specify)

DIVISION 26 - CHILDREN

Class

- 1 Clothing
- 2 Repurposed Clothing
- 3 Any Other (specify)

DIVISION 27 - ADULT WEAR

Class

- 1 Clothing
- 2 Repurposed Clothing
- 3 Any Other (specify)

DIVISION 28 - ACCESSORIES

Class

- 1 Purses / Bags
- 2 Any Other (specify)



ADULT QUILT SHOW



Awards Offered: Sponsored by Valley Quilt Guild

- **BEST OF SHOW:** \$50.00 (One awarded overall Quilt)
- **RESERVE BEST OF SHOW:** \$15.00 (One awarded overall Quilt)
- **BEST OF DIVISION:** Rosette

Premiums Offered: First: \$15.00 Second: \$10.00 Third: \$5.00

Entry Information:

- Entry Fee: \$2.00
- Entry Limit: No Limit
- Entries are to be delivered to the Franklin Hall.
- See Still Exhibit Schedule for receiving of entry, judging and pick-up dates/times.

Rules:

- Eligibility: Open to California residents, ages 19 or older.
- All entries must have been home produced by the exhibitor within one (1) year of June 25, 2026 to be eligible for entry, judging and exhibit.
- Please have your name; address and telephone number sewn in lower left-hand corner on back of quilt.
- Quilts must have hanging sleeve sewn to the top edge to be eligible for exhibit and competition.
- If you do not find a class for your entry in those listed under the Division where it should be entered, enter the item under Any Other.

DIVISION 29 – QUILT

Class

- 1 Large Quilt
 - Measures 71" or more on the longest side. Hand or machine pieced, and hand quilted by maker.
- 2 Medium Quilt-
 - Measure 48" to 70" on the longest side. Hand or machine pieced, and hand quilted by maker.
- 3 Wall Quilt-
 - Measures less than 48" on the longest side. Hand or machine pieced, and hand quilted by maker.
- 4 Large Quilt-
 - Measures 71" or more on the longest side. Machine pieced and machine quilted by maker.
- 5 Medium Quilt-
 - Measures 48" to 70" on the longest side. Machine pieced and machine quilted by maker.
- 6 Wall Quilt-
 - Measures less than 48" on the longest side. Machine pieced and machine quilted by maker.
- 7 Large Quilt-
 - Measures 71" or more on the longest side. Machine pieced and hand or machine quilted by another.
- 8 Medium Quilt-
 - Measures 48" to 70" on the longest side. Machine pieced and hand or machine quilted by another.
- 9 Wall Quilt-
 - Measures less than 48" on the longest side. Machine pieced and hand or machine quilted by another.
- 10 Large Quilt-
 - Measures 71" or more on the longest side. Group quilt
- 11 Medium Quilt-
 - Measures 48" to 70" on the longest side. Group quilt.
- 12 Wall Quilt-
 - Measures less than 48" on the longest side. Group quilt.
- 13 Quilt – Any Other (specify)
- 14 Applique – Any Size
 - Specialty Techniques, Embellished, Embroidered, 3D, etc.



QUILT BLOCK CONTEST

Awards Offered: Sponsored by Valley Quilt Guild

Premiums Offered:	First: \$30.00	Second: \$25.00	Third: \$20.00
	Fourth: \$15.00	Fifth: \$10.00	Sixth: \$5.00

Entry Information:

- Entry Fee: None
- Entry Limit: No Limit
- Entries are to be delivered to the Franklin Hall. Deliver your quilt block to the Valley Quilt Guild table by 3:30 pm on Saturday, June 27, 2026.
- See Still Exhibit Schedule for receiving of entry and judging.

Rules:

- Eligibility: Open to California residents, ages 19 or older.
- Contest is open to all Yuba and Sutter County residents and Valley Quilt Guild members.
- Exhibitor must complete entry form at time of delivery of the Quilt block.
- The quilt block must measure 12½" x 12½" to be eligible for competition.
- Blocks that do not square up to 12½" will be disqualified.
- Blocks must be made from 100% cotton fabric.
- Use any technique or pattern.
- Do not pre-quilt or back the block.
- Have your name and address applied to the back of the block.
- Quilt blocks will be on display for the remainder of the fair.
- The entries will not be returned.
- Blocks will be used for next year's fair raffle quilt or a community service quilt.
- COLOR THEME: 'Red, White & Blue'

DIVISION 30 - QUILT BLOCK CONTEST

Class

- 1 Quilt Block



ADULT ARTS, CRAFTS & HOBBIES

Awards Offered:

- **BEST OF SHOW:** \$50.00
- **RESERVE BEST OF SHOW:** \$25.00
- **BEST OF DIVISION:** Rosette



Premiums Offered:

First: \$5.00 Second: \$4.00 Third: \$2.00

Entry Information:

- Entry Fee: \$1.00
- Entry Limit: No Limit
- Entries are to be delivered to the Franklin Hall.
- See Still Exhibit Schedule for receiving of entry, judging and pick-up dates/times.

Rules:

- Eligibility: Open to California residents, ages 19 or older.
- All entries must have been home produced by the exhibitor within one (1) year of June 25, 2026 to be eligible for entry, judging and exhibit.
- If you do not find a class for your entry in those listed under the Division where it should be entered, enter the item under Any Other.

DIVISION 31 – CERAMICS

MOLDED (Clay & Fired), Hydrocal (Gypsum Cement, Plaster, Non-Fired)

Class

- 1 Bird or Animal (specify)
- 2 Figurine (specify)
- 3 Plate, Bowl, Planter or Vase
- 4 Kitchen Accessories
- 5 Holiday Items (specify)
- 6 Any Other Ceramic (specify)

DIVISION 32 - WOODWORKING

Class

- 1 Small Furniture
- 2 Decoys
- 3 Birdhouse
- 4 Wooden Signs
- 5 Coat Rack
- 6 Jewelry Box



- 7 Saddle Rack
- 8 Barnwood Projects (specify)
- 9 Wood Pallet Projects (specify)
- 10 Shabby Chic
- 11 Any Other (specify)

DIVISION 33 – METAL WORK

Class

- 1 Metal Artwork
- 2 Metal Wall Art
- 3 Horseshoe Projects
- 4 Rustic Tin Projects
- 5 Wind Chimes
- 6 Any Other (specify)



DIVISION 34 – HOLIDAY CRAFTS

Class

- 1 Valentines Day
- 2 Easter
- 3 4th of July
- 4 Halloween
- 5 Thanksgiving
- 6 Christmas
- 7 Any Other (specify)

DIVISION 35 – MISCELLANEOUS CRAFTS

Class

- 1 Basket (specify type)
- 2 Glass Work (not larger than 36" one side)
- 3 Stepping Stone
- 4 Leatherwork
- 5 Gourds
- 6 Seashell Art
- 7 Stained Glass
- 8 Stamp Art
- 9 Models
- 10 Garden Projects (No Live Plants)
- 11 Taxidermy
- 12 Trash to Treasure (Made with recycled products)
- 13 Painted Rocks
- 14 Homemade Soap
- 15 Terra Cotta Pot Projects
- 16 Tile Mosaics
- 17 Coffee Pods
- 18 Tye Dye Items (specify)
- 19 Any Other (specify)



DIVISION 36- BEADING

Class

- 1 Jewelry
- 2 Purse
- 3 Any Other (specify)

DIVISION 37 - JEWELRY MAKING

Class

- 1 Individual Item
- 2 2 Piece Set
- 3 Any Other (specify)



DIVISION 38 – SCRAPBOOKING

Exhibitors may submit one page or a two-page theme spread in a protective sleeve from a scrapbook for judging and layout, not the whole book. Provide name and address on back of exhibit.

Class

- 1 People
- 2 Holiday
- 3 Sports
- 4 Vacation/Travel
- 5 Any Other (specify)

DIVISION 39 - TOLE PAINTING

Class

- 1 Any (specify)

DIVISION 40 - I FOUND IT ON Pinterest

Any non-perishable item inspired by a Pinterest post. A printout of the original Pinterest post must be included with the entry.

Class

- 1 Small (under 12")
- 2 Medium (12" - 18")
- 3 Large (Over 18")

DIVISION 41 - COLLECTIONS

Class

- 1 Any Collection (specify)

DIVISION 42 – MANDELLA

Class

- 1 Picture
- 2 Any Other (specify)



ADULT FINE ARTS DEPARTMENT



Rules:

- Eligibility: Open to California residents, ages 19 or older.
- Entry Limit: No Limit
- Exhibits must not have been shown previously at the Yuba-Sutter Fair in any category.
- Work must have been completed within (24) twenty-four months of opening date of fair and was not entered in the 2025 Yuba-Sutter Fair.
- Every entry will be hung unless entries exceed hanging space. If this should occur, selection will be unbiased and based on judged results.
- Every exhibitor will have a minimum of three (3) paintings hung.
- Only original artwork will be accepted.
- No water or motor driven features allowed.
- In determining the proper division to enter your painting, use the main subject of the painting.
- Use the medium to determine the correct class number.
- You may only enter in one of following three (3) Classifications:
 1. **PROFESSIONAL:** A person who engages in the activity for monetary profit, i.e. someone who derives income from Fine Arts such as a Paid Instructor (not a volunteer), Teacher or Professor of Fine Arts, or an artist who exhibits his/her work for sale, from which a commission is paid.
 2. **SEMI-PROFESSIONAL:** Open to those whose returns from sales exceed the cost of materials and/or gains of monetary profit to supplement their income.
 3. **NOVICE/AMATEUR:** Open to those who engage in Art as a hobby, whose returns from sales, if any, do not exceed the cost of the materials for the articles sold.
- All entries will be judged but will be displayed at the discretion of Management.
- The Yuba-Sutter Fair reserves the right to reject any work that does not comply with the rules and/or definitions of questionable taste for a family event.
- Paintings of nude figures will not be accepted for judging or display.

- Fair Management shall not be responsible for any accidental loss that may occur to exhibitors or exhibits at any showing. Exhibitors shall hold Management harmless and indemnify it against any legal proceeding arising from such accident or loss.

How to Prepare Painting Exhibits:

1. Paintings and drawings must be framed. Size cannot exceed 48" x 36". This measurement includes the frame.
2. Each painting must be securely wired for hanging. Measure to be sure the screw eyes are evenly spaced so that the wire will be even, and the painting will hang straight.
3. Paintings with painted sides and all staples in the rear are considered framed. The following will disqualify your entry:
 - Metal hanging brackets
 - Paper or glass frame
 - Tape or string from which to hang painting
 - Bracketed frames
 - Copies of original work done by any process.

NOVICE/AMATEUR - ART AND SCULPTURES

Awards Offered:

- **BEST OF SHOW:** \$25.00
- **RESERVE BEST OF SHOW:** \$15.00
- **BEST OF DIVISION:** Rosette

Premiums Offered: First: \$15.00 Second: \$12.00 Third: \$10.00

Entry Information:

- Entry Fee: \$3.00
- Entries are to be delivered to the Franklin Hall.
- See Still Exhibit Schedule for receiving of entry, judging and pick-up dates/times.

DIVISION 101 – NOVICE/AMATEUR ARTS

Paintings & Drawings

Class

- 1 Oil /Acrylic
- 2 Watercolor
- 3 Pen/Pencil/Charcoal/Pastel
- 4 Mixed Media
- 5 Any Other (specify)

DIVISION 102 – NOVICE/AMATEUR SCULPTURES

Class

- 1 Clay/Ceramic (no soft material)
- 2 Any Other (specify)

SEMI-PROFESSIONAL - ART AND SCULPTURES

Awards Offered:

- **BEST OF SHOW:** \$25.00
- **RESERVE BEST OF SHOW:** \$15.00
- **BEST OF DIVISION:** Rosette

Premiums Offered: First: \$15.00 Second: \$12.00 Third: \$10.00

Entry Information:

- Entry Fee: \$3.00
- Entries are to be delivered to the Franklin Hall.
- See Still Exhibit Schedule for receiving of entry, judging and pick-up dates/times.

DIVISION 103 – SEMI-PROFESSIONAL ARTS

Paintings & Drawings

Class

- 1 Oil /Acrylic
- 2 Watercolor
- 3 Pen/Pencil/Charcoal/Pastel
- 4 Mixed Media
- 5 Any Other (specify)

DIVISION 104 – SEMI-PROFESSIONAL SCULPTURES

Class

- 1 Clay/Ceramic (no soft material)
- 2 Any Other (specify)



PROFESSIONAL - ART AND SCULPTURES

Awards Offered:

- **BEST OF SHOW:** \$25.00
- **RESERVE BEST OF SHOW:** \$15.00
- **BEST OF DIVISION:** Rosette

Premiums Offered: First: \$15.00 Second: \$12.00 Third: \$10.00

Entry Information:

- Entry Fee: \$3.00
- Entries are to be delivered to the Franklin Hall.
- See Still Exhibit Schedule for receiving of entry, judging and pick-up dates/times.

DIVISION 105 – PROFESSIONAL ARTS

Paintings & Drawings

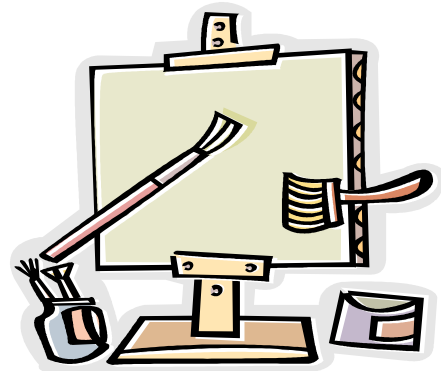
Class

- 1 Oil /Acrylic
- 2 Watercolor
- 3 Pen/Pencil/Charcoal/Pastel
- 4 Mixed Media
- 5 Any Other (specify)

DIVISION 106 – PROFESSIONAL SCULPTURES

Class

- 1 Clay/Ceramic (no soft material)
- 2 Any Other (specify)



WINE & CANVAS



Awards Offered:

- **BEST OF SHOW:** \$25.00
- **RESERVE BEST OF SHOW:** \$15.00
- **BEST OF DIVISION:** Rosette

Premiums Offered: First: \$10.00 Second: \$7.00 Third: \$5.00

Entry Information:

- Entry Fee: \$1.00
- Entries are to be delivered to the Franklin Hall.
- See Still Exhibit Schedule for receiving of entry, judging and pick-up dates/times.

Rules:

- Eligibility: Open to California residents, ages 19 or older.
- Entry Limit: None. Enter as many exhibits as you wish.
- Must have been painted in the last year and not entered in 2025. (June 1, 2025 – June 1, 2026)

DIVISION 109 - WINE AND CANVAS

Class

- 1 Animals
- 2 Floral
- 3 Nature
- 4 Holiday
- 5 Any Other (specify)



SPECIAL CONTESTS OF THE ARTS & CRAFTS DEPARTMENT

Pop Art

Awards Offered:

- **BEST OF SHOW:** \$25.00
- **RESERVE BEST OF SHOW:** \$15.00
- **BEST OF DIVISION:** Rosette



Premiums Offered:

First: \$10.00

Second: \$7.00

Third: \$5.00

Entry Information:

- Entry Fee: \$1.00
- Entry Limit: No Limit
- Danish System of Judging
- Entries are to be delivered to the Franklin Hall.
- See Still Exhibit Schedule for receiving of entry, judging and pick-up dates/times.

Rules:

- Eligibility: Open to California residents, ages 19 or older.
- Create any two-dimensional (e.g. a picture or scene) or three dimensional (a sculpture, figure, car, etc.) art piece out of popcorn
- You may paint popcorn different colors and/or glue small objects (beads, sequins, glitter, etc.) on the popcorn. Showcase your creativity!

DIVISION 110 - POP ART

Class

- 1 Pop Art Displays



Garbage Can Art

Awards Offered:

- **BEST OF SHOW:** \$25.00
- **RESERVE BEST OF SHOW:** \$15.00
- **BEST OF DIVISION:** Rosette

Premiums Offered: First: \$25.00 Second: \$15.00 Third: \$10.00

Entry Information:

- Entry Fee: \$5.00
- Entry Limit: 1 Entry per exhibitor per class. Limited to first the first 10 entries per class.
- Entries are to be delivered to the Franklin Hall.
- Danish System of Judging
- See Still Exhibit Schedule for receiving of entry, judging and pick-up dates/times.

Rules:

- Eligibility: Open to California residents, ages 19 or older.
- 35 or 50 gallon garbage cans may be picked up from the fair grounds for painting. Designs may be funny, agricultural, fair theme or pretty. Use your imagination!
- Entries must have been home prepared by the exhibitor.
- The entries will not be returned they will be used throughout the fairgrounds.
- All entries will be judged but will be displayed at the discretion of Management.

DIVISION 111 - GARBAGE CAN ART

Class

- 1 Garbage Can Art



Photo Cut-Out Props

Awards Offered:

- **BEST OF SHOW:** \$25.00
- **RESERVE BEST OF SHOW:** \$15.00
- **BEST OF DIVISION:** Rosette

Premiums Offered: First: \$25.00 Second: \$15.00 Third: \$10.00

Entry Information:

- Entry Fee: \$5.00
- Entry Limit: 1 Entry per exhibitor per class. Limited to first the first 10 entries per class.
- Entries are to be delivered to the Franklin Hall.
- Danish System of Judging.
- See Still Exhibit Schedule for receiving of entry, judging and pick-up dates/times.

Rules:

- Eligibility: Open to California residents, ages 19 or older.
- Exhibitor may use plywood or cardboard for the photo cutout prop. The Photo Cut-Out Props will remain in the fair's possession after the entry is judged and be used and displayed throughout the fairgrounds.
- Designs may be funny, agricultural, fair theme or pretty. Use your imagination!
- Judging will be 33% originality, 33% workmanship and neatness, 34% overall appeal to fairgoers.
- Entries must have been home prepared by the exhibitor.
- All entries will be judged but will be displayed at the discretion of Management.

DIVISION 113 - PHOTO CUT-OUT PROPS

Class

- 1 Photo-Cut-Out Prop



Barn Quilts

Awards Offered:

- **BEST OF SHOW:** \$25.00
- **RESERVE BEST OF SHOW:** \$15.00
- **BEST OF DIVISION:** Rosette

Premiums Offered: First: \$25.00 Second: \$20.00 Third: \$10.00

Entry Information:

- Entry Fee: \$5.00
- Entry Limit: 1 Entry per exhibitor per class. Limited to first the first 15 entries per class.
- Entries are to be delivered to the Franklin Hall.
- Danish System of Judging.
- See Still Exhibit Schedule for receiving of entry, judging and pick-up dates/times.

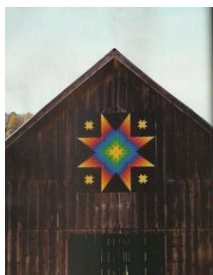
Rules:

- Eligibility: Open to California residents, ages 19 or older.
- Exhibitor must use thin underlayment plywood to paint the barn quilt on.
- The exhibitor has the option to donate the finished barn quilt to the fair for further use.
- The fairgrounds will drill corner holes for hanging purposes. Exhibits will be displayed throughout the fairgrounds during the annual fair.
- Samples are available in the office.
- Designs may be funny, agricultural, fair theme or pretty. Use your imagination!
- Judging will be 33% originality, 33% workmanship and neatness, 34% overall appeal to fairgoers.
- Entries must have been home prepared by the exhibitor.
- All entries will be judged but will be displayed at the discretion of Management.

DIVISION 114 – BARN QUILTS

Class

- 1 2' x 2' Barn Quilt
- 2 4' x 4' Barn Quilt



ADULT PHOTOGRAPHY

Entry Information:

- Entry Fee: \$1.00
- Entry Limit: No Limit
- Entries are to be delivered to the Franklin Hall.
- See Still Exhibit Schedule for receiving of entry, judging and pick-up dates/times.

Rules:

- Eligibility: Open to California residents, ages 19 or older.

Requirements:

- Entry cannot be signed, framed or dated.
- Entry must include the title of each entry.
- Photographs must have been taken after June 1, 2025 and not entered in the 2025 Yuba-Sutter Fair.
- Every entry will be judged and displayed at the discretion of the Fair Management.



How to prepare photographs for exhibit:

- **No entry may be less than 8" X 10" and no more than 36" x 24" including matte frame.**
- **All photographs must be matted.**
- The exhibitor's name, address, title of the photo, division and class must be clearly shown on the back in the UPPER RIGHT CORNER.
- Loose photos will not be accepted. All prints must be mounted on mat boards with Velcro on the back ready for hanging. Attach one piece, of no less than 1" x 1" of Velcro to each corner of the back of the mat board (total 4 pieces of heavy duty velcro) and provide the opposite strip of Velcro to the fair. Fair reserves the right to add more Velcro if needed. Opposite strip of Velcro will not be returned after the fair.
- No name or title shall be shown on the front of the print or matte frame.
- General class definition: Those entries that do not fit into existing classes
- You may only enter in one of following two Classifications:
 1. **PROFESSIONAL:** A person who engages in Photography for monetary profit, i.e. someone who derives income from Photography such as a Paid Instructor (not a volunteer), Teacher or Professor of Photography, or a photographer who exhibits his/her work for sale, from which a commission is paid.
 2. **NOVICE/AMATEUR:** Open to those who engage in Art as a hobby, whose returns from sales, if any, do not exceed the cost of the materials for the articles sold.

Disqualifications:

- Using wood, metal or glass as a mount will disqualify the entry.
- Photographs containing nude figures or inappropriate exposure. Disqualification is at the discretion of Fair Management.

- 17 Technical Effects – Experimental
- 18 Photo Series

- 19 Eyes
- 20 Any Other (specify)

DIVISION 117 – SELFIES

Class

- 1 Selfie – Alone
- 2 Selfie – With Others
- 3 Selfie – On Vacation
- 4 Selfie – Bad Hair Day
- 5 Selfie – Winning

Class

- 6 Selfie – Smiling
- 7 Selfie – At Work
- 8 Selfie – Out to Eat
- 9 Selfie – Drinking Coffee
- 10 Selfie – Any Other (specify)

PROFESSIONAL PHOTOGRAPHY

Awards Offered:

- **BEST OF SHOW:** \$50.00
- **RESERVE BEST OF SHOW:** \$25.00
- **BEST OF DIVISION:** Rosette



Premiums Offered:

First: \$10.00

Second: \$7.00

Third: \$5.00

DIVISION 120 – BLACK & WHITE PHOTOGRAPHY

Class

- 1 Domestic Animals
- 2 Farm Animals
- 3 Wildlife Animals
- 4 Farm Equipment
- 5 Mother Nature
- 6 Landscape
- 7 Seascape
- 8 First Responders
- 9 People - Portraits
- 10 Babies/Children

Class

- 11 Activity or Event
- 12 Flowers
- 13 Architecture
- 14 Sports
- 15 Still Life
- 16 Skies
- 17 Technical Effects – Experimental
- 18 Photo Series
- 19 Eyes
- 20 Any Other (specify)

DIVISION 121 – COLOR PHOTOGRAPHY

Class

- 1 Domestic Animals
- 2 Farm Animals
- 3 Wildlife Animals
- 4 Farm Equipment
- 5 Mother Nature
- 6 Landscape
- 7 Seascape

- 8 First Responders
- 9 People - Portraits
- 10 Babies/Children

Class

- 11 Activity or Event
- 12 Flowers
- 13 Architecture

- 14 Sports
- 15 Still Life
- 16 Skies
- 17 Technical Effects – Experimental

- 18 Photo Series
- 19 Eyes
- 20 Any Other (specify)



ADULT FLORICULTURE DEPARTMENT



POTTED PLANTS

Awards Offered:

- **BEST OF SHOW:** \$50.00 & Rosette
- **RESERVE BEST OF SHOW:** \$25.00 & Rosette
- **BEST OF DIVISION:** Rosette

Premiums Offered: First: \$10.00 Second: \$7.00 Third: \$5.00

Entry Information:

- Entry Fee: \$1.00
- Entry Limit: No Limit
- Entries are to be delivered to the Franklin Hall.
- See Still Exhibit Schedule for receiving of entry, judging and pick-up dates/times.

Rules:

- Eligibility: Open to California residents, ages 19 or older.
- Open to Amateur Floral Designers.
- If a hanging plant, specify on the entry form.
- Each entry must be labeled with Exhibitor's name on bottom of containers.
- Each container may have only one variety unless otherwise specified.
- The exhibitor must have personally cared for plants for the past four months.
- Exhibitors must provide non-leaking drainage saucers for potted plants.
- Exhibitor provides all potting containers unless otherwise specified.
- Potted Plants must be clean and insect/disease free or entries will be disqualified from the show and asked to be removed from the fairgrounds immediately.
- Floriculture staff will water and maintain potted plants and garden exhibits, excluding bonsais, succulents and cactus.
- Exhibitors with plants requiring special care in watering may leave written instructions with Floriculture staff.
- Bonsai exhibitors are responsible for the watering and care of their own Bonsai exhibits.
- If a plant qualifies for a specific class, it must be entered in that class rather than in "Other potted plant display".

DIVISION 151 - POTTED PLANTS

Class

- 1 Aucuba
- 2 African Violets
- 3 Begonia
- 4 Blooming Plant
- 5 Bromeliad
- 6 Cactus – 6" pot size and under
- 7 Cactus - 7" pot size and over
- 8 Cactus - Jade
- 9 Celosia
- 10 Coleus
- 11 Dwarf Plants
- 12 Fern
- 13 Fuchsia

Class

- 14 Geranium
- 15 Ivy
- 16 Orchid
- 17 Pelargonium
- 18 Petunias
- 19 Pothos
- 20 Roses
- 21 Spider Plant
- 22 Topiaries
- 23 Tropicals
- 24 Mixed Plants in same container
- 25 Any Other (specify)

DIVISION 152 – SUCCULENTS POTTED PLANTS

Class

- 1 Aeonium
- 2 Agave
- 3 Aloe
- 4 Ceropegia
- 5 Crassula
- 6 Echeveria
- 7 Euphorbia

Class

- 8 Gasteria
- 9 Kalanchoe
- 10 Sansevieria Trifasciata (Snake Plant)
- 11 Sedum (Burro's Tail)
- 12 Sempervivum
- 13 Stapelia
- 14 Any Other (specify)

DIVISION 153 – PLANTS IN UNUSUAL CONTAINER

Class

- 1 Shoe or Boot
- 2 Surprise Us! (specify)

DIVISION 154 – DISH GARDEN

Class

- 1 Fairy Garden
- 2 Succulent Dish Garden
- 3 Any Other (specify)



FLORAL ARRANGEMENTS

Awards Offered:

- **BEST OF DIVISION:** Rosette

Premiums Offered: First: \$20.00 Second: \$15.00 Third: \$10.00

Entry Information:

- Entry Fee: \$1.00
- Entry Limit: No Limit
- Entries are to be delivered to the Franklin Hall.
- See Still Exhibit Schedule for receiving of entry, judging and pick-up dates/times.

Rules:

- Eligibility: Open to California residents, ages 19 or older.
- The Franklin Hall will be open at 10 am daily. Arrangements are to be completed and in place by 11am. Judging to be completed 11:15 am each day.
- Use of accessories, to scale (figurines, shells, etc.) is limited to a max of 10% of the total arrangement.
- The exhibitor will furnish his/her own container. Please check to see that the container holds water and has no leaks. If your container does not hold water, it will be removed from the flower show.
- Exhibitors are to use primarily fresh plant material but may include up to 10% dried material
- Exhibitors may not use: artificial fruits, artificial vegetables, or artificial flowers.
- Exhibitors are to place arrangements in the designated area the way the exhibitor wants the judge to view the arrangement. Arrangements **MAY NOT BE MOVED** until after judging.
- You may only enter in one of following two Classifications:
 1. **NOVICE:** Open to amateurs who have not entered more than four judged competitions.
 2. **INTERMEDIATE:** Open to amateurs who have entered between five and ten previous judged competitions.

AMATEUR FLORAL ARRANGEMENTS

DIVISION 155 – THURSDAY - Arrangements can be constructed off site.

Class

- | | | |
|---|--------------|-----------------------------|
| 1 | Novice | Fair Theme: Barn in the USA |
| 2 | Intermediate | Fair Theme: Barn in the USA |

DIVISION 157 – FRIDAY – Arrangements can be made off site.

Class

- | | | |
|---|--------------|--------------------------|
| 1 | Novice | Theme: Strawberry Fields |
| 2 | Intermediate | Theme: Bon Voyage |

DIVISION 159 – SATURDAY – Arrangements can be made off site.

Class

- | | | |
|---|--------------|-----------------------------|
| 1 | Novice | Theme: A Little Bit Country |
| 2 | Intermediate | Theme: Jewel Box |

DIVISION 161 – SUNDAY – Arrangements can be made off site.

Class

- | | | |
|---|--------------|------------------------|
| 1 | Novice | Theme: Dance with Me |
| 2 | Intermediate | Theme: Patchwork Quilt |

CUT FLOWER SHOW

Awards Offered:

- **BEST OF DIVISION:** Rosette

Premiums Offered: First: \$10.00 Second: \$7.00 Third: \$5.00



Entry Information:

- Entry Fee: \$1.00
- Entry Limit: No Entry Limit
- Entries are to be delivered to the Flower House Building.
- See Still Exhibit Schedule for receiving of entry, judging and pick-up dates/times.

Rules:

- Eligibility: Open to California residents, ages 19 or older.
- The Franklin Hall will be open at 10 am daily. Arrangements are to be completed and in place by 11 am. Judging to be completed 11:15 am each day.
- Cut Flowers will be placed in containers supplied by the Fair.
- Enter the exact number of stems or blooms specified for in each class. Inaccurate count will be disqualified.
- A bloom must be at least ¼ open (a bud is not a bloom).
- Management reserves the right to dispose of cut flowers that wilt.
- DO NOT pull petals off of any entry.
- Cut flowers will remain on display for the duration of the Fair.
- No cut flower entry may be used for competition in any other division. Cut flower entries may not come from any other Division on the Floricultural Department.

DIVISION 163 - THURSDAY- (ANY COLOR)

Class

- | | |
|---|-------------------------------|
| 1 | Dahlias- (one stem) |
| 2 | Rose - (bloom(s) on one stem) |
| 3 | Delphinium - (three stems) |
| 4 | Hybiscus – (three stems) |

DIVISION 164 - FRIDAY- (ANY COLOR)

Class

- 1 Tea Roses (one stem)
- 2 Hydrangea (one stem)
- 3 Clematis (three stems)
- 4 Cone Flower (one stem)

DIVISION 165 - SATURDAY- (ANY COLOR)

Class

- 1 Sunflower (one stem)
- 2 Asters (three stems)
- 3 Peony (one stem)
- 4 Gladiola (one stem)

DIVISION 166 - SUNDAY- (ANY COLOR)

Class

- 1 Daisy, Any (three stems)
- 2 Geranium (three stems)
- 3 Lily (one stem)
- 4 Larkspur (one stem)



SPECIAL CONTESTS OF THE FLORICULTURE DEPARTMENT



FLOWER GARDEN COMPETITION

Awards Offered:

- **BEST OF SHOW:** Rosette
- **RESERVE BEST OF SHOW:** Rosette

Premiums Offered: First: \$300.00 Second: \$200.00 Third: \$100.00 Fourth: \$50.00

Entry Information:

- Entry Fee: \$15.00
- Entry Limit: Limited to the **first 5 entries**
- Danish System of Judging
- See Still Exhibit Schedule for receiving of entry, judging and pick-up dates/times.

Rules:

- Eligibility: Open to all California Residents, ages 19 or older, organizations, churches, lodges, clubs, etc.
- Each exhibit will receive a 10' x 10' spot.
- Construction of backdrops, etc. should be done ahead of time.
- All walks and/or paths with open access to the public must be roped off. You may want to incorporate a barrier into your design to surround the whole garden.
- No dyed, artificial or painted flowers. Materials used must be in their natural living form.
- Setup will be Sunday, June 21st thru Wednesday, June 24th, 10 am – 6 pm and must be completed and in place by Thursday, June 25th at 10 am.

- The following are not permitted in flower shows: natural bird nests, "stuffed birds", insects, live fish, birds or other animals.
- Any accessories must be secured and shall remain in the garden for the duration of the Fair.
- Do not use articles of value.
- You may post a sign with the name of the competing individual, group or organization on the exhibit after judging.
- All garden square footage must meet the following requirements:
 - ◆ A minimum of 40% flowers.
 - ◆ 30% of other living plant material.
 - ◆ 30% for other materials, pathways, ponds, rocks, patios.
 - ◆ Refurbishing and watering during the Fair shall take place from 10 am to 12 Noon.
 - ◆ Exhibitors should strive to promote the theme.
 - ◆ If you use any display material that shows a label, the label must be a Yuba, Sutter, Colusa or Butte County product.

DIVISION 167 – FLOWER GARDEN COMPETITION

Class

- 1 Flower Garden Competition

FLOWERING WINE BARREL COMPETITION

Awards Offered:

- **BEST OF SHOW:** Rosette
- **RESERVE BEST OF SHOW:** Rosette

Premiums Offered: First: \$50.00 Second: \$40.00
 Third: \$30.00 Fourth: \$15.00

Entry Information:

- Entry Fee: \$7.00
- Entry Limit: Limited to the **first 5 entries**
- Danish System of Judging
- See Still Exhibit Schedule for receiving of entry, judging and pick-up dates/times.



Rules:

- Eligibility: Open to all California Residents, ages 19 or older, organizations, churches, lodges, clubs, etc.
- Fair will provide an empty wine barrel. Please do not move barrels from where they are placed. Please leave wine barrels free of dirt, plants, etc. when dismantling your exhibit on Monday, June 29, 2026.
- Season to taste with flowers, color foliage and other plants.
- Do not use articles of value.
- No dyed, artificial or painted flowers.
- The following are not permitted in flower shows: natural bird nests, "stuffed birds", insects, live fish, birds or other animals.

- Any accessories must be secured and shall remain for the duration of the fair.
- Setup will be Sunday, June 21st thru Wednesday, June 24th, 10 am – 6 pm and must be completed and in place by Thursday, June 25th at 10 am.
- All Wine Barrels must meet the following requirements:
 - ◆ A minimum of 50% color
 - ◆ 40% of other living plant material
 - ◆ 10% for other materials and accessories
 - ◆ Refurbishing and watering during the Fair shall take place between 10 am and 12 Noon.
 - ◆ If you use any display material that shows a label, the label must be a Yuba, Sutter, Colusa or Butte County product.

DIVISION 168 – WINE BARREL COMPETITION

Class

- 1 Flowering Wine Barrel Competition

FLOWERING WHEEL BARREL/WAGON COMPETITION

Awards Offered:

- **BEST OF SHOW:** Rosette
- **RESERVE BEST OF SHOW:** Rosette

Premiums Offered: First: \$50.00 Second: \$40.00 Third: \$30.00
Fourth: \$15.00



Entry Information:

- Entry Fee: \$7.00
- Entry Limit: No Limit
- Danish System of Judging
- See Still Exhibit Schedule for receiving of entry, judging and pick-up dates/times.

Rules:

- Eligibility: Open to all California Residents, ages 19 or older, organizations, churches, lodges, clubs, etc.
- You provide the wheel barrel, new or old.
- Season to taste with flowers, color foliage and other plants.
- Do not use articles of value.
- No dyed, artificial or painted flowers.
- The following are not permitted in flower shows: natural bird nests, "stuffed birds", insects, live fish, birds or other animals.
- Any accessories must be secured and shall remain for the duration of the fair.
- Setup will start Sunday, June 21st thru Wednesday, June 24th, 10 am – 6 pm and must be completed and in place by Thursday, June 25th at 10 am.
- All Wheel Barrels must meet the following requirements:
 - ◆ A minimum of 50% color
 - ◆ 40% of other living plant material

- ◆ 10% for other materials and accessories
- ◆ Refurbishing and watering during the Fair shall take place between 10 am and 12 Noon.
- ◆ If you use any display material that shows a label, the label must be a Yuba, Sutter, Colusa or Butte County product.

DIVISION 169 – WHEEL BARREL/WAGON COMPETITION

Class

- 1 Flowering Wheel Barrel Competition
- 2 Flowering Wagon Competition



ADULT AGRICULTURE / HORTICULTURE DEPARTMENT

Yuba-Sutter Area's Agricultural Industry!

Did you know that the top ten (10) commodities of Yuba and Sutter counties are: Rice, Walnuts, Peaches, Prunes, Tomatoes, Cattle/calves, Almonds, Wheat, Beans, & Nursery products?

We indeed remain an agricultural area. Our commerce is tied to the seasons of preparing, planting, growing, harvesting and shipping of agricultural products.

Awards Offered:

- **BEST OF SHOW:** \$25 & Rosette
- **RESERVE BEST OF SHOW:** \$15 & Rosette
- **BEST OF DIVISION:** Rosette

Premiums Offered: First: \$12.00 Second: \$8.00 Third: \$5.00



Entry Information:

- Entry Fee: \$1.00
- Entry Limit: No Limit
- Entries are to be delivered to the Franklin Hall.
- See Still Exhibit Schedule for receiving of entry, judging and pick-up dates/times.

Rules:

- **Eligibility:** Open to California residents, ages 19 or older.
- The quality desired in agricultural and horticultural exhibits is the same quality that brings the best financial return in the commercial market. Such exhibits must be at least equal in maturity to that state of ripeness required by Section 42513 of the California Agricultural Code in order to be considered for premium awards.
- Items may not be entered in "Any Other" classes if there is a class offered for that item.
- **Mature** means having reached that stage of ripeness which will insure the completion of the ripening process to a degree which will insure palatability after the removal of the product from the tree, plant or vine.
- **Overripe** means having an advanced state of maturity, which causes the product to be undesirable for human consumption in a fresh state

Requirements:

- The exhibitor must have grown products entered in these divisions.
- The Fair will not be responsible for the return of exhibits in this department.
- It is the exhibitor's responsibility to provide replacement perishable produce in the quantity entered.
- Spoiled fruits and vegetables will be removed from the exhibit.
- Number of required products to be delivered with entry follows the class name.

VEGETABLES AND DECIDUOUS FRUITS



DIVISION 170 – FRUIT & POD VEGETABLES

Class	Class
1 Beans, Any (specify) (12 Pods)	6 Tomatoes, Heirloom (3)
2 Peas, Any (specify) (12 Pods)	7 Tomatoes, Any Other (specify) (3)
3 Peppers, Bell (4)	8 Sunflower (1)
4 Peppers, Any Other (specify) (5)	9 Egg Plant (1)
5 Tomatoes, Cherry (3)	10 Any Other (specify) (5)

DIVISION 171 – ROOT, BULB & TUBER VEGETABLES

Class	Class
1 Beets, Any (specify) (5)	6 Potatoes, White (3)
2 Carrots, Any (specify) (5)	7 Potatoes, Red (3)
3 Garlic, Any (specify) (5)	8 Radishes, Any (specify) (5)
4 Onions, White (3)	9 Turnips, (3)
5 Onions, Red/Yellow (3)	10 Any Other (specify) (5)

DIVISION 172 – LEAFY & STEM VEGETABLES

Class	Class
1 Broccoli (1 bunch)	6 Green Onions (1 bunch)
2 Cabbage (1 head)	7 Lettuce (2 plants)
3 Cauliflower (1 bunch)	8 Rhubarb (6 stalks)
4 Corn, Sweet (3) Leave husks on	9 Spinach (1 bunch)
5 Corn, Other (3) Leave husks on	10 Any Other

DIVISION 173 – FRESH HERBS

Class	Class
1 Chives	4 Parsley - Specify Variety
2 Mint - Specify Variety	5 Rosemary
3 Oregano	6 Lavender
	7 Any Other (specify)

DIVISION 174 – VINE CROPS

Class

- 1 Melon (1)
- 2 Cucumbers, Slicing (3)
- 3 Cucumbers, Pickling (3)
- 4 Watermelons (1)
- 5 Squash, Zucchini (2)

Class

- 6 Squash, Crook Neck (1)
- 7 Squash, Acorn (1)
- 8 Squash, Scallop (1)
- 9 Squash, Any other (specify) (1)
- 10 Gourds, Ornamental (3)

DIVISION 175 – DECIDUOUS FRUITS

Class

- 1 Peaches, Cling (3)
- 2 Peaches, Freestone (3)
- 3 Apricots (3)
- 4 Nectarines (3)

Class

- 5 Pears (3)
- 6 Plums (3)
- 7 Apples (3)
- 8 Any Other (specify) (3)

DIVISION 176 – NOVELTY PRODUCE

Entries do NOT have to be grown by exhibitor, but PLEASE get permission from owner to exhibit.

Class

- 1 Any Vegetable or Fruit – Largest Size
- 2 Any Vegetable or Fruit – Tallest
- 3 Any Vegetable or Fruit – Most Unusual by Shape

DIVISION 177 – PRODUCE ART

Entries do NOT have to be grown by exhibitor, but PLEASE get permission from owner to exhibit. May use all fruits, nuts, vegetables, grains, and/ seeds.

Class

- 1 Decorated Single Potato
- 2 Decorated Group of Potatoes
- 3 Gift Basket at least 75% homegrown
- 4 Vegetable, Fruit and/or Grain Arrangement

Class

- 5 Scarecrow
- 6 Birdhouse
- 7 Decorated Straw Bale
- 8 Other (specify)



NUTS



DIVISION 178 – NUTS – IN SHELL

In shell Nuts - Minimum of one (1) pound. It is permitted to use last year's crop.

Class

- 1 Almonds, Any Variety (specify)
- 2 Walnuts, Any Variety (specify)
- 3 Any Other Type of Nut (specify)

DIVISION 179 – NUTS – SHELLED NUTS

Shell Nuts - Minimum of on half (1/2) pound.

Class

- 1 Almonds, Any Variety (specify)
- 2 Walnuts, Any Variety (specify)
- 3 Any Other Type of Nut (specify)

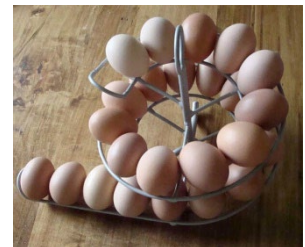
EGGS

DIVISION 180 – EGGS

Regular (1/2 Dozen in Carton) Display container will be provided.

Class

- 1 White
- 2 Brown
- 3 Blue
- 4 Green
- 5 Any Other Color (specify)



DIVISION 181 – SPECIAL DISPLAY EGGS

(Six or More Eggs in a creative display) Eggs MUST be secure within the display. All Colors (natural colors mixed OK)

Class

- 1 Creative Display Eggs

YOUTH & TEEN STILL EXHIBITS DEPARTMENT

Eligibility:

- Open to California residents, ages 18 and under.
- Unless otherwise noted, exhibitors are not required to be members of any 4-H Club or FFA Chapter in order to enter a Still Exhibit. All Youth & Teens age 18 or younger are welcome to exhibit their work and projects in the fair!

Age Classifications:

- To enhance the exhibitor's experience classes have been broken down into the following age categories:
 - Ages 4 & under
 - Ages 5 to 8
 - Ages 9 to 10
 - Ages 11 to 13
 - Ages 14 to 18

Judging:

- Unless otherwise noted, all divisions in the Youth & Teen Still Exhibits Department will be judged using the Danish Judging System. It is based upon the established standards of quality for each type of product. In this system each exhibit is judged according to how well it meets that standard rather than how it compares with other exhibits. The following guidelines shall be used by the judge(s):

Quality	Score	Ribbon
1 st Place – Superior	90 – 100%	Blue
2 nd Place – Good	80 – 89%	Red
3 rd Place – Average	70 – 79%	White

General Information & Rules:

- Enter exhibits online at ysfair.com
- Entry Deadline: **May 31, 2026**
- No late entries will be accepted
- All Local & State Rules apply
- Entries must have been prepared by the exhibitor
- The Judge has the authority to transfer any entry from one Division/Class to another. The Judge's decision is final.
- Any Other Classes are for those items that do not fit into the classes described in the Division and Class listing. Items entered in the Any Other Class must not fit into any other class available in the Division and Class listings.

YOUTH & TEEN PRESERVED FOODS



Awards Offered:

- **BEST OF SHOW:** \$35.00
- **RESERVE BEST OF SHOW:** \$20.00
- **BEST OF DIVISION:** Rosette

Premiums Offered: First: \$5.00 Second: \$3.00 Third: \$2.00

Entry Information:

- Entry Fee: \$1.00
- Entry Limit: 10 entries per exhibitor per division
- Entries are to be delivered to the Franklin Hall.
- See Still Exhibit Schedule for receiving of entry, judging and pick-up dates/times.

Rules:

- Eligibility: Open to California residents, ages 18 or younger.
- All entries in this division must be home prepared and processed by the exhibitor within one (1) year of the opening date of the Fair.
- Items, which have been shown at any previous Yuba-Sutter Fair, are NOT eligible.
- Standard Jar: A container specifically or specially designed for canning purposes. Paraffin seals will not be accepted. All canning must be sealed in jars.
- Containers to use:
 - Fruits and Vegetables- Pint or quart, clear glass, narrow or wide mouth Mason jar.
 - Jams, Jellies, and Preserves- Pint or ½ pint, clear glass jelly jars (sealed with a lid), or clear mason jars.
- Non-Acid Foods- All vegetables must be canned under pressure. Low acid fruit, such as figs, should be made with more acid by adding lemon juice as directed in the University Agricultural Extension Service leaflet, Home Canning of Fruits.
- Tomatoes and fruits (not including their juices) must be processed in a boiling water bath.

- Exhibits must be accurately labeled on the bottom of the jar with exhibitor's name and name of item.
- Exhibitors are required to bring two (2) jars of each entry.
- One will be used for the actual judging process; the other will be used for display.
- Open jars may be picked up on Monday, June 15, 2026 from 9 am – 6 pm in Franklin Hall only.
- Any Other classes are for those items that do not fit into the classes described in the Division and Class listing.

DIVISION 201 – Exhibitor Ages 4 & under

DIVISION 202 – Exhibitor Ages 5 – 8

DIVISION 203 – Exhibitor Ages 9 - 10

DIVISION 204 – Exhibitor Ages 11 - 13

DIVISION 205 – Exhibitor Ages 14 -18

CANNED FRUIT

Class

- 1 Applesauce
- 2 Peaches
- 3 Plums
- 4 Strawberries
- 5 Any Other (specify)

CANNED VEGETABLES

Class

- 6 Asparagus
- 7 Beans, green or waxed
- 8 Corn
- 9 Olives
- 10 Squash (any variety)
- 11 Tomatoes, whole pack
- 12 Any Other (specify)

JAMS

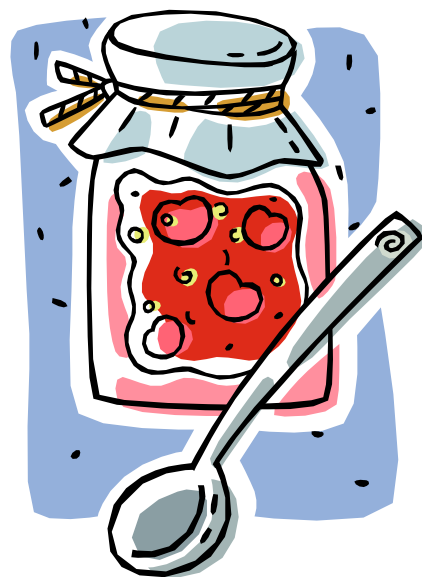
Class

- 13 Apricot
- 14 Peach
- 15 Plum
- 16 Grape
- 17 Strawberry
- 18 Raspberry
- 19 Blackberry
- 20 Any Other (specify)

JELLIES

Class

- 21 Apple
- 22 Berry (Any)
- 23 Grape



- 24 Plum
- 25 Pomegranate
- 26 Any Other Combination
- 27 Any Other (specify)



MARMALADES / BUTTER

Class

- 28 Marmalade, Orange
- 29 Marmalade, Any Other
- 30 Apple Butter
- 31 Apricot Butter
- 32 Any Other (specify)

PICKLES, SAUCES, RELISHES & DRIED FOOD PRODUCTS

Class

- 33 Cucumber
- 34 Bread & Butter pickles
- 35 Peppers
- 36 Fruit
- 37 Jerky

HOMEMADE SALSA

Class

- 38 Salsa – Hot
- 39 Salsa - Mild
- 40 Any Other (specify)



MISCELLANEOUS

Class

- 41 BBQ Sauce
- 42 Spaghetti Sauce
- 43 Fruit Sauce, Any
- 44 Any Other (specify)

YOUTH & TEEN BAKING & CONFECTIONS



Awards Offered:

- **BEST OF SHOW:** \$35.00
- **RESERVE BEST OF SHOW:** \$20.00
- **BEST OF DIVISION:** Rosette

Premiums Offered:

First: \$5.00

Second: \$3.00

Third: \$2.00

Entry Information:

- Entry Fee: \$1.00
- Entry Limit: 10 entries per exhibitor per division
- Entries are to be delivered to the Franklin Hall.
- See Still Exhibit Schedule for receiving of entry, judging and pick-up dates/times.

Rules:

- Eligibility: Open to California residents, ages 18 or younger.
- Entries must have been home prepared by the exhibitor.
- Commercial mixes will be disqualified.
- Entries that spoil during the Fair will be removed.

Amounts:

- Muffins ½ dozen plus 1
- Cookies ½ dozen plus 1
- Cupcakes ½ dozen plus 1
- Cake-pops ½ dozen plus 1
- Cakes 2/3 cake plus 1 slice
- Breads 2/3 loaf plus 1 slice
- Pie One whole pie no larger than 8", plus 1 sample piece
- Biscotti 6 pieces plus 1
- Confections ½ pound plus 1
- Suckers ½ dozen plus 1

Wrapping Instructions:

- Bread - Must be exhibited in a self-sealing bag. No plate or cardboard.
- Biscuits & Rolls - Must be on a paper plate no larger than 6" in size and placed in the smallest self-sealing bag possible.
- Cookies, Confections and Candies must be on a five (5) or six (6) inch paper plate placed in one (1) quart size sealed bag.
- Cakes: Loaf, Pound - Wrap in clear plastic on a cardboard base, base to extend no more than 1" beyond cake.
- Pies - Must be smoothly wrapped in clear plastic.
- Samples for judging must be in small self-sealing bags and securely taped to the outside of the entry.

DIVISION 206 – Exhibitor Ages 4 & under

DIVISION 207 – Exhibitor Ages 5 – 8

DIVISION 208 – Exhibitor Ages 9 - 10

DIVISION 209 – Exhibitor Ages 11 - 13

DIVISION 210 – Exhibitor Ages 14 -18

BREADS

Class

- 1 Banana Bread
- 2 Zucchini Bread
- 3 Pumpkin Bread
- 4 Corn Bread
- 5 Doughnuts
- 6 Gluten Free
- 7 Any Other (specify)

BISCUITS & ROLLS

Class

- 8 Biscuits
- 9 Croissants
- 10 Muffins
- 11 Cinnamon Rolls
- 12 Any Other (specify)

LAYER CAKE-FROSTED

HOW TO EXHIBIT:

- Cake must be two (2) layers
- Filling may be same as frosting or different

Class

- 13 Cake Roll
- 14 Any Other (specify)

CAKES – NOT FROSTED

Class

- 15 Coffee Cake
- 16 Carrot Cake
- 17 Sponge Cake
- 18 Gluten Free
- 19 Any Other (specify)

DECORATED FOODS

(Styrofoam or plastic base acceptable)

Class

- 20 Any Holiday
- 21 Gingerbread House
- 22 Graham Cracker House
- 23 Cupcakes
- 24 Cake-pops
- 25 Happy Birthday Cake
- 26 Cookies
- 27 Any Other (specify)

COOKIES

Class

- 27 Bar (specify)
- 28 Brownies – Frosted
- 29 Brownies - Unfrosted
- 30 Snicker Doodle Cookie
- 31 Peanut Butter Cookie
- 32 Chocolate Chip Cookie
- 33 Oatmeal Cookie
- 34 Gingerbread Cookie
- 35 Gluten Free Cookie
- 36 Any Other Cookie (specify)

CONFECTIONS

Class

- 37 Chocolate Fudge
- 38 Taffy
- 39 Truffles
- 40 Popcorn
- 41 Nut Brittle
- 42 Any Other (specify)

PIES & PASTRIES

(Pies – One crust or Two)

Class

- 43 Apple
- 44 Cherry
- 45 Lemon
- 46 Pumpkin
- 47 Berry
- 48 Cream
- 49 Blueberry
- 50 Rhubarb
- 51 Any Other (specify)



YOUTH & TEEN CLOTHING & TEXTILES



Awards Offered:

- **BEST OF SHOW:** \$35.00
- **RESERVE BEST OF SHOW:** \$20.00
- **BEST OF DIVISION:** Rosette

Premiums Offered: First: \$5.00 Second: \$3.00 Third: \$2.00

Entry Information:

- Entry Fee: \$1.00
- Entry Limit: 10 entries per exhibitor per division
- Entries are to be delivered to the Franklin Hall.
- See Still Exhibit Schedule for receiving of entry, judging and pick-up dates/times.

Rules:

- Eligibility: Open to California residents, ages 18 or younger.
- Entries must have been home prepared by the exhibitor.
- All entries must have been home produced by the exhibitor within one (1) year of June 25, 2026 to be eligible for entry, judging and exhibit.
- Sweater sets, place mat sets, etc. must be pinned together to guard against loss.
- Functional toys and dolls must be child safe.
- Please have your name; address and telephone number sewn in an unobtrusive seam in the garments and on the quilt-hanging strip.
- Quilts must have hanging sleeve sewn to the top edge to be eligible for exhibit and competition.
- If you do not find a class for your entry in those listed under the Division where it should be entered, enter the item under Any Other.

DIVISION 211 – Exhibitor Ages 4 & under

DIVISION 212 – Exhibitor Ages 5 – 8

DIVISION 213 – Exhibitor Ages 9 - 10

DIVISION 214 – Exhibitor Ages 11 - 13

DIVISION 215 – Exhibitor Ages 14 -18

KNITTED ARTICLES

Class

- 1 Any Knitted Item (specify)

CROCHETED ARTICLES

Class

- 2 Any Crocheted Item (specify)

TOYS AND HOUSEHOLD ITEMS

Enter dolls only in Crafts and Hobbies section)

Class

- 3 Stuffed Animal
- 4 Any Other (specify)

HOLIDAY TEXTILES

Class

- 5 Ornaments
- 6 Any Other (specify)

CLOTHING

Class

- 7 Any Clothing Item
- 8 Repurposed Clothing

ACCESSORIES

Class

- 9 Purses / Bags
- 10 Any Other (specify)

QUILTS

Class

- 11 Quilt/Any (specify)

YOUTH & TEEN ARTS, CRAFTS & HOBBIES

Awards Offered:

- **BEST OF SHOW:** \$35.00
- **RESERVE BEST OF SHOW:** \$20.00
- **BEST OF DIVISION:** Rosette



Premiums Offered: First: \$5.00 Second: \$3.00 Third: \$2.00

Special Awards:

- **DIRECTOR'S AWARD:** This special award offers the exhibitor an opportunity to express his or her thoughts on the fair theme.
First: \$25.00 and Rosette Second: \$15.00 and Rosette Third: \$10.00 and Rosette

Entry Information:

- Entry Fee: \$1.00
- Entry Limit: 10 entries per exhibitor per division.
- Entries are to be delivered to the Franklin Hall.
- See Still Exhibit Schedule for receiving of entry, judging and pick-up dates/times.

Rules:

- Eligibility: Open to California residents, ages 18 or younger.
- Entries must have been home prepared by the exhibitor.
- All entries must have been home produced by the exhibitor within one (1) year of June 25, 2026 to be eligible for entry, judging and exhibit.
- If you do not find a class for your entry in those listed under the Division where it should be entered, enter the item under Any Other.

DIVISION 216 – Exhibitor Ages 4 & under

DIVISION 217 – Exhibitor Ages 5 – 8

DIVISION 218 – Exhibitor Ages 9 - 10

DIVISION 219 – Exhibitor Ages 11 - 13

DIVISION 220 – Exhibitor Ages 14 -18

LEGOS

Must be secured on solid platform – **ALL LEGOS MUST BE GLUED TOGETHER.**

Class

- 1 2026 Fair Theme – 'Barn in the USA'
- 2 Legos – 50 pieces or less
- 3 Legos – 51 to 100 Pieces
- 4 Legos – 101 or more Pieces

MODEL MAKING

Class

- 5 Models – Cars & Trucks
- 6 Models – Military
- 7 Models – Space
- 8 Models – Any Other (specify)

PAINTED ROCKS

Must be delivered in a plastic sealable bag. Any rock not exceed 12" circumference.

Class

- 9 Painted Rock – Single
- 10 Painted Rock – Collection (6 or more)



SLIME PROJECTS

Must be delivered in a plastic sealable bag or solid platform

Class

- 11 Slime – Creative Color
- 12 Slime – Creative Design
- 13 Slime – Unique Presentation

WOODWORKING

Class

- 14 Birdhouse
- 15 Wooden Signs
- 16 Coat Rack
- 17 Barnwood Projects (specify)
- 18 Wood Pallet Projects (specify)
- 19 Any Other (specify)



METAL WORKING

Class

- 20 Metal Artwork
- 21 Horseshoe Projects
- 22 Wind Chimes
- 23 Any Other (specify)

CERAMICS

Class

- 24 Ceramics – Hydrocal
- 25 Ceramics – Fine
- 26 Ceramics – All Other (specify)

SCULPTURE ART

Class

- 27 Sculpture – Clay & Dough
- 28 Sculpture – Wood
- 29 Sculpture – All Other (specify)

BEADWORK

Class

- 30 Beadwork – Bracelet
- 31 Beadwork – Necklace
- 32 Beadwork – All Other (specify)



MISCELLANEOUS CRAFTS & HOBBIES

Class

- 33 Crayon Melt Art
- 34 Friendship Bracelets
- 35 Duct Tape Projects
- 36 Egg Decorating
- 37 Holiday Crafts
- 38 Mask
- 39 Stepping Stone
- 40 Leatherwork

Class

- 41 Seashell Art
- 42 Stamp Art
- 43 Tye-Dye Items
- 44 Coffee Pods
- 45 Scrapbook Projects
- 46 Jewelry Making
- 47 Any Other (specify)

COLLECTIONS

Class

- 48 Any Collection (specify)

Paintings & Drawings

Awards Offered:

- **BEST OF SHOW:** \$35.00
- **RESERVE BEST OF SHOW:** \$20.00
- **BEST OF DIVISION:** Rosette

Premiums Offered:

Third: \$2.00

First: \$5.00

Second: \$3.00



Entry Information:

- Entry Fee: \$1.00
- Entry Limit: 5 entries per exhibitor per division
- Entries are to be delivered to the Franklin Hall.
- See Still Exhibit Schedule for receiving of entry, judging and pick-up dates/times.

Rules:

- Eligibility: Open to California residents, ages 18 or younger.
- Entries must have been home prepared by the exhibitor.
- All entries must have been home produced by the exhibitor within one (1) year of June 25, 2026 to be eligible for entry, judging and exhibit.

- Every entry will be hung unless entries exceed hanging space. If this should occur, selection will be unbiased and based on judged results.
- Only original artwork will be accepted.
- In determining the proper division to enter your painting, use the main subject of the painting.
- Art Work may be done in Pen, Pencil, Crayon or Water Color and matted. Entries in the Youth & Teen Paintings & Drawing Divisions can be matted on construction paper.
- Canvases done in Oils or Acrylic may be wired for hanging from the stretching frame
- Framed pictures must be securely wired for hanging.
- Pastels acceptable.
- Size Limitations: Maximum size is 36" on longest side.
- All entries will be judged but will be displayed at the discretion of Management.
- The Yuba-Sutter Fair reserves the right to reject any work that does not comply with the rules and/or definitions of questionable taste for a family event.
- Paintings of nude figures will not be accepted for judging or display.
- Fair Management shall not be responsible for any accidental loss that may occur to exhibitors or exhibits at any showing. Exhibitors shall hold Management harmless and indemnify it against any legal proceeding arising from such accident or loss.

DIVISION 221 – Exhibitor Ages 4 & under

DIVISION 222 – Exhibitor Ages 5 – 8

DIVISION 223 – Exhibitor Ages 9 - 10

DIVISION 224 – Exhibitor Ages 11 - 13

DIVISION 225 – Exhibitor Ages 14 -18

ARTS - PAINTINGS & DRAWINGS

Class

- 1 Drawing – Charcoal, Pencil, Pen & Ink, Felt Pen or Colored Pencils
- 2 Computer Art
- 3 Acrylic
- 4 Oil
- 5 Watercolor
- 6 Other – Batik, Woodblock, Etching, Serigraphy, Non-Canvas Surface
- 7 Mixed Media
- 8 Any Other (specify)



COLORING CONTEST

Awards Offered:

- **BEST OF SHOW:** \$10.00
- **RESERVE BEST OF SHOW:** \$5.00
- **BEST OF DIVISION:** Rosette
- **Participant Ribbon for all entries**

Entry Information:

- Entry Fee: No Entry Fee
- Entry Limit: 2 entries per exhibitor per division
- Entries are to be delivered to the Franklin Hall.
- See Still Exhibit Schedule for receiving of entry, judging and pick-up dates/times.
- Coloring page is available online on the entry page or at the Fairgrounds Office
- Mail or drop off entry at the Fairgrounds Office by the still exhibit entry deadline.
- On the back of the coloring page, please include exhibitor's Name, Division #, Class # and a phone number so winners can be reached.

Rules:

- Eligibility: Open to California residents, ages 18 or younger.
- Entries must have been home prepared by the exhibitor.

DIVISION 226 – Exhibitor Ages 4 & under

DIVISION 227 – Exhibitor Ages 5 – 8

DIVISION 228 – Exhibitor Ages 9 - 10

DIVISION 229 – Exhibitor Ages 11 - 13

DIVISION 230 – Exhibitor Ages 14 -18

ARTS – FAIR POSTER COLORING CONTEST

Class

- 1 Fair Poster Coloring Contest

School Projects

Awards Offered:

- **BEST OF SHOW:** \$25.00
- **RESERVE BEST OF SHOW:** \$15.00
- **BEST OF DIVISION:** Rosette

Premiums Offered: First: \$5.00 Second: \$3.00 Third: \$2.00

Entry Information:

- Entry Fee: \$1.00
- Entry Limit: 3 entries per exhibitor per division
- Danish System of Judging
- Entries are to be delivered to the Franklin Hall.
- See Still Exhibit Schedule for receiving of entry, judging and pick-up dates/times.

Rules:

- Eligibility: Open to California residents, ages 18 or younger.
- All entries must have been home produced by the exhibitor within one (1) year of June 25, 2026 to be eligible for entry, judging and exhibit.

DIVISION 236 – Exhibitor Ages 4 & under

DIVISION 237 – Exhibitor Ages 5 – 8

DIVISION 238 – Exhibitor Ages 9 - 10

DIVISION 239 – Exhibitor Ages 11 - 13

DIVISION 240 – Exhibitor Ages 14 -18

School Projects

Class

- 1 California Mission Project
- 2 Science Project
- 3 Book Reports
- 4 State Floats
- 5 Display Boards
- 6 School Media
- 7 Creative Writing/Poems
- 8 Any Other (specify)



SPECIAL CONTESTS OF THE ARTS & CRAFTS DEPARTMENT

Pop Art

Awards Offered:

- **BEST OF SHOW:** \$15.00
- **RESERVE BEST OF SHOW:** \$10.00
- **BEST OF DIVISION:** Rosette



Premiums Offered:

First: \$10.00

Second: \$7.00

Third: \$5.00

Entry Information:

- Entry Fee: \$1.00
- Entry Limit: 3 entries per exhibitor per division
- Entries are to be delivered to the Franklin Hall.
- See Still Exhibit Schedule for receiving of entry, judging and pick-up dates/times.

Rules:

- Eligibility: Open to California residents 18 or younger or to any youth group residing in Yuba & Sutter Counties, i.e. 4-H, FFA, Church Groups, school clubs, sport teams.
- Create any two-dimensional (e.g. a picture or scene) or three-dimensional (a sculpture, figure, car, etc.) art piece out of popcorn
- You may paint popcorn different colors and/or glue small objects (beads, sequins, glitter, etc.) on the popcorn. Showcase your creativity!

DIVISION 241 – Exhibitor Ages 4 & under

DIVISION 242 – Exhibitor Ages 5 – 8

DIVISION 243 – Exhibitor Ages 9 - 10

DIVISION 244 – Exhibitor Ages 11 - 13

DIVISION 245 – Exhibitor Ages 14 -18

DIVISION 246 – Club/Group/Team or School Classroom Project

POP ART

Class

- 1 Pop Art Displays



Garbage Can Art

Awards Offered:

- **BEST OF SHOW:** \$25.00
- **RESERVE BEST OF SHOW:** \$15.00
- **BEST OF DIVISION:** Rosette

Premiums Offered: First: \$25.00 Second: \$15.00 Third: \$10.00

Entry Information:

- Entry Fee: \$5.00
- Entry Limit: 1 Entry per exhibitor per class. Limited to first the first 10 entries per class.
- Entries are to be delivered to the Franklin Hall.
- See Still Exhibit Schedule for receiving of entry, judging and pick-up dates/times.

Rules:

- Eligibility: Open to California residents 18 or younger or to any youth group residing in Yuba & Sutter Counties, i.e. 4-H, FFA, Church Groups, school clubs, sport teams.
- 35 or 50 gallon garbage cans may be picked up from the fair grounds for painting. The Garbage cans will remain in the fair's possession after the entry is judged and be used and displayed throughout the fairgrounds. Designs may be funny, agricultural, fair theme or pretty. Use your imagination!
- Entries must have been home prepared by the exhibitor.
- All entries will be judged but will be displayed at the discretion of Management.

DIVISION 247 – Exhibitor Ages 4 & under

DIVISION 248 – Exhibitor Ages 5 – 8

DIVISION 249 – Exhibitor Ages 9 - 10

DIVISION 250 – Exhibitor Ages 11 - 13

DIVISION 251 – Exhibitor Ages 14 -18

DIVISION 252 – Club/Group/Team or School Classroom Project

GARBAGE CAN ART

Class

- 1 Garbage Can Art



Photo Cut-Out Props

Awards Offered:

- **BEST OF SHOW:** \$25.00
- **RESERVE BEST OF SHOW:** \$15.00
- **BEST OF DIVISION:** Rosette

Premiums Offered: First: \$25.00 Second: \$15.00 Third: \$10.00

Entry Information:

- Entry Fee: \$5.00
- Entry Limit: 1 Entry per exhibitor per class. Limited to first the first 10 entries per class.
- Entries are to be delivered to the Franklin Hall.
- See Still Exhibit Schedule for receiving of entry, judging and pick-up dates/times.

Rules:

- Eligibility: Open to California residents 18 or younger or to any youth group residing in Yuba & Sutter Counties, i.e. 4-H, FFA, Church Groups, school clubs, sport teams.
- Exhibitor may use plywood or cardboard for the photo cutout prop. The Photo Cut-Out Props will remain in the fair's possession after the entry is judged and be used and displayed throughout the fairgrounds.
- Designs may be funny, agricultural, fair theme or pretty. Use your imagination!
- Judging will be 33% originality, 33% workmanship and neatness, 34% overall appeal to fairgoers.
- Entries must have been home prepared by the exhibitor.
- All entries will be judged but will be displayed at the discretion of Management.

DIVISION 259 – Exhibitor Ages 4 & under

DIVISION 260 – Exhibitor Ages 5 – 8

DIVISION 261 – Exhibitor Ages 9 - 10

DIVISION 262 – Exhibitor Ages 11 - 13

DIVISION 263 – Exhibitor Ages 14 -18

DIVISION 264 – Club/Group/Team or School Classroom Project

PHOTO CUT-OUT PROPS

Class

1 Photo Cut-Out Prop



Barn Quilts

Awards Offered:

- **BEST OF SHOW:** \$25.00
- **RESERVE BEST OF SHOW:** \$15.00
- **BEST OF DIVISION:** Rosette

Premiums Offered: First: \$25.00 Second: \$15.00 Third: \$10.00

Entry Information:

- Entry Fee: \$5.00
- Entry Limit: 1 Entry per exhibitor per class. Limited to first the first 15 entries per class.
- Entries are to be delivered to the Franklin Hall.
- See Still Exhibit Schedule for receiving of entry, judging and pick-up dates/times.

Rules:

- Eligibility: Open to California residents 18 or younger or to any youth group residing in Yuba & Sutter Counties, i.e. 4-H, FFA, Church Groups, school clubs, sport teams.
- Exhibitor must use thin underlayment plywood to paint the barn quilt on.
- The exhibitor has the option to donate the finished barn quilt to the fair for further use.
- The fairgrounds will drill corner holes for hanging purposes. Exhibits will be displayed throughout the fairgrounds during the annual fair.
- Samples are available in the office.
- Designs may be funny, agricultural, fair theme or pretty. Use your imagination!
- Judging will be 33% originality, 33% workmanship and neatness, 34% overall appeal to fairgoers.
- Entries must have been home prepared by the exhibitor.
- All entries will be judged but will be displayed at the discretion of Management.

DIVISION 265 – Exhibitor Ages 4 & under

DIVISION 266 – Exhibitor Ages 5 – 8

DIVISION 267 – Exhibitor Ages 9 - 10

DIVISION 268 – Exhibitor Ages 11 - 13

DIVISION 269 – Exhibitor Ages 14 -18

DIVISION 270 – Club/Group/Team or School Classroom Project

BARN QUILTS

Class

- 1 2' x 2' Barn Quilt
- 2 4' x 4' Barn Quilt



School Spirit

Awards Offered:

- **BEST OF SHOW:** \$50.00
- **RESERVE BEST OF SHOW:** \$25.00
- **BEST OF DIVISION:** Rosette



Premiums Offered:

First: \$30.00 Second: \$25.00 Third: \$20.00
Fourth: \$10.00 Fifth: \$5.00

Entry Information:

- Entry Fee: \$5.00
- Entry Limit: 1 Entry per exhibitor per class.
- American System of Judging.
- Entries are to be delivered to the Franklin Hall.
- See Still Exhibit Schedule for receiving of entry, judging and pick-up dates/times.

Rules:

- 1 Eligibility: Open to any school classroom residing in Yuba & Sutter Counties
- 2 Creatively showcase your classroom or entire school in a mixed media/collage format. Emphasize inclusiveness, equality, diversity, and of course FUN!
- 3 Entry must be on a 4' by 4' base, which may be wood, cardboard, poster board, or any other sturdy material.
- 4 Entry may either be designed to (1) hang on a wall with a wire or other hanging apparatus securely attached or (2) sit flat on a table.
- 5 You must use any combination of art (paintings, drawings, etc.) photographs, fabric, school themed material, three dimensional objects, etc.
- 6 Please put your School, Teacher, or Classroom name on the Entry Form.

DIVISION 271 – Pre-School

DIVISION 272 – Elementary Classroom (Representing individual classroom)

DIVISION 273 – Elementary School (Representing the entire school)

DIVISION 274 – Middle School Classroom (Representing individual classroom)

DIVISION 275 – Middle School (Representing the entire school)

DIVISION 276 – High School Classroom (Representing individual classroom)

DIVISION 277 – High School (Representing the entire school)

School Spirit

Class

- 1 School Spirit



YOUTH & TEEN PHOTOGRAPHY & VIDEO DEPARTMENT

PHOTOGRAPHY



Entry Information:

- Entry Fee: \$1.00
- Entry Limit: 10 entries per exhibitor per division.
- Entries are to be delivered to the Franklin Hall.
- See Still Exhibit Schedule for receiving of entry, judging and pick-up dates/times.

Rules:

- Eligibility: Open to California residents, ages 18 or younger.

Requirements:

- Entry cannot be signed, framed or dated.
- Entry must include the title of each entry.
- Photographs must have been taken after June 1, 2025 and not entered in the 2025 Yuba-Sutter Fair. Every entry will be judged and displayed at the discretion of the Fair Management.

How to prepare photographs for exhibit:

- The exhibitor's name, address, title of the photo, division and class must be clearly shown on the back in the UPPER RIGHT CORNER.
- Loose photos will not be accepted. **All prints must be mounted in mat frames** with Velcro on the back ready for hanging. Attach one piece, of no less than 1" x 1" of Velcro to each corner of the back of the mat frame (total 4 pieces of heavy duty velcro) and provide the opposite strip of Velcro to the fair. Fair reserves the right to add more Velcro if needed. Opposite strip of Velcro will not be returned after the fair.
- No name or title shall be shown on the front of the print or mat frame.
- No entry may be less than 8" X 10" and no more than 36" x 24" including mat frame.

Disqualifications:

- Using wood, metal or glass as a mount will disqualify the entry.
- Photographs containing nude figures or inappropriate exposure. Disqualification is at the discretion of Fair Management.

DIVISION 278– Exhibitor Ages 4 & under

DIVISION 279 – Exhibitor Ages 5 – 8

DIVISION 280 – Exhibitor Ages 9 - 10

DIVISION 281 – Exhibitor Ages 11 - 13

DIVISION 282 – Exhibitor Ages 14 -18

Awards Offered:

- **BEST OF SHOW:** \$25.00
- **RESERVE BEST OF SHOW:** \$15.00
- **BEST OF DIVISION:** Rosette



Premiums Offered: First: \$5.00 Second: \$3.00 Third: \$2.00

Special Awards Offered:

DIRECTOR'S AWARD: The entry that best represents the Yuba-Sutter Fair per print division overall. First: \$25.00 and Rosette, Second: \$15.00 and Rosette, Third: \$10.00 and Rosette

LOCAL FLAVOR: The entry that best represents the Yuba-Sutter area per print division overall. First – \$10.00 and Rosette Second – \$5.00 and Rosette

BLACK & WHITE PHOTOGRAPHY

Class

- 1 Domestic Animals
- 2 Farm Animals
- 3 Wildlife Animals
- 4 Farm Equipment
- 5 Mother Nature
- 6 Landscape
- 7 Seascape
- 8 First Responders
- 9 People - Portraits
- 10 Babies/Children

Class

- 11 Activity or Event
- 12 Flowers
- 13 Architecture
- 14 Sports
- 15 Still Life
- 16 Skies
- 17 Technical Effects – Experimental
- 18 Photo Series
- 19 Eyes
- 20 Any Other (specify)

COLOR PHOTOGRAPHY

Class

- 21 Domestic Animals
- 22 Farm Animals
- 23 Wildlife Animals
- 24 Farm Equipment
- 25 Mother Nature
- 26 Landscape
- 27 Seascape

Class

- 28 First Responders
- 29 People - Portraits
- 30 Babies/Children
- 31 Activity or Event
- 32 Flowers
- 33 Architecture
- 34 Sports
- 35 Still Life

- 36 Skies
- 37 Technical Effects – Experimental

- 38 Photo Series
- 39 Eyes
- 40 Any Other (specify)

SELFIES

Class

- 41 Selfie – Alone
- 42 Selfie – With Others
- 43 Selfie – On Vacation
- 44 Selfie – Bad Hair Day
- 45 Selfie – Winning

Class

- 46 Selfie – Smiling
- 47 Selfie – At Work
- 48 Selfie – Out to Eat
- 49 Selfie – Drinking Coffee
- 50 Selfie – Any Other (specify)

YOUTH & TEEN FLORICULTURE DEPARTMENT



FLORAL ARRANGEMENTS

Awards Offered:

- **BEST OF DIVISION:** Rosette

Premiums Offered: First: \$20.00 Second: \$15.00 Third: \$10.00 Fourth: \$5.00

Entry Information:

- Entry Fee: \$1.00
- Entry Limit: 2 entries per exhibitor per division
- Entries are to be delivered to the Franklin Hall.
- See Still Exhibit Schedule for receiving of entry, judging and pick-up dates/times.

Rules:

- Eligibility: Open to California residents, ages 18 or younger.
- One (2) entry per class, per Exhibitor for Flower Arrangements.
- The Flower House will be open at 10 am daily. Arrangements are to be completed and in place by 11 am. Judging to be completed 11:15 am each day.
- Use of accessories, to scale (figurines, shells, etc.) is limited to a max of 10% of the total arrangement.
- The exhibitor will furnish his/her own container. Please check to see that the container holds water and has no leaks. If your container does not hold water, it will be removed from the flower show.
- Exhibitors are to use primarily fresh plant material but may include up to 10% dried material
- Exhibitors may not use: artificial fruits, artificial vegetables, or artificial flowers.
- Exhibitors are to place arrangements in the designated area the way the exhibitor wants the judge to view the arrangement. Arrangements **MAY NOT BE MOVED** until after judging.
- Failure to comply with these guidelines may result in disqualification.
- The Fair Management is unable to assume responsibility for any article lost, stolen, or damaged. Use of heirlooms or valuable items in the arrangement is discouraged.
- No containers or flowers will be provided.
- Junior Exhibitors must complete their own flower design without assistance, or they will be disqualified.

DIVISION 301 – Exhibitor Ages 4 & under

DIVISION 302 – Exhibitor Ages 5 – 8

DIVISION 303 – Exhibitor Ages 9 - 10

DIVISION 304 – Exhibitor Ages 11 - 13

DIVISION 305 – Exhibitor Ages 14 -18

THURSDAY – Arrangements can be constructed off-site.

Class

1 Theme: **Barn in the USA**

DIVISION 306 – Exhibitor Ages 4 & under

DIVISION 307 – Exhibitor Ages 5 – 8

DIVISION 308 – Exhibitor Ages 9 - 10

DIVISION 309 – Exhibitor Ages 11 - 13

DIVISION 310 – Exhibitor Ages 14 -18

FRIDAY – Arrangements can be constructed off-site.

Class

1 Theme: **By the Sea**

DIVISION 311 – Exhibitor Ages 4 & under

DIVISION 312 – Exhibitor Ages 5 – 8

DIVISION 313 – Exhibitor Ages 9 - 10

DIVISION 314 – Exhibitor Ages 11 - 13

DIVISION 315 – Exhibitor Ages 14 -18

SATURDAY – Arrangements can be constructed off-site.

Class

1 Theme: **Grand Champion**

DIVISION 316 – Exhibitor Ages 4 & under

DIVISION 317 – Exhibitor Ages 5 – 8

DIVISION 318 – Exhibitor Ages 9 - 10

DIVISION 319 – Exhibitor Ages 11 - 13

DIVISION 320 – Exhibitor Ages 14 -18

SUNDAY – Arrangements can be constructed off-site.

Class

1 Theme: **Summer Round Up**

CUT FLOWER SHOW

Awards Offered:

- **BEST OF DIVISION:** Rosette

Premiums Offered: First: \$7.00 Second: \$5.00 Third: \$3.00 Fourth: \$2.00

Entry Information:

- Entry Fee: \$1.00
- Entry Limit: Two (2) entries per class per exhibitor
- Entries are to be delivered to the Flower House Building.
- See Still Exhibit Schedule for receiving of entry, judging and pick-up dates/times.

Rules:

- Eligibility: Open to California residents, ages 18 or younger.
- The exhibitor must have grown all cut flower entries.
- The Flower House will be open at 10 am daily. Cut Flowers must be in place by 11 am. Judging to be completed 11:15 am each day.
- Cut Flowers will be placed in containers supplied by the Fair.
- Enter the exact number of stems or blooms specified for in each class. Inaccurate count will be disqualified.
- A bloom must be at least ¼ open (a bud is not a bloom).
- Management reserves the right to dispose of cut flowers that wilt.
- **DO NOT** pull petals off of any entry.
- Limit of two (2) entries per class per exhibitor.
- Cut flowers will remain on display for the duration of the Fair.
- No cut flower entry may be used for competition in any other division. Cut flower entries may not come from any other Division on the Floricultural Department.
- The Judge has the authority to transfer any entry from one Division/Class to another. The Judge's decision is final.
- Failure to comply with these guidelines may result in disqualification.

DIVISION 321 – Exhibitor Ages 4 & under

DIVISION 322 – Exhibitor Ages 5 – 8

DIVISION 323 – Exhibitor Ages 9 - 10

DIVISION 324 – Exhibitor Ages 11 - 13

DIVISION 325 – Exhibitor Ages 14 -18

THURSDAY – Any Color

Class

- 1 Dahlias- (one stem)
- 2 Rose - (bloom(s) on one stem)
- 3 Delphiniums - (three stems)
- 4 Hybiscus – (three stems)



DIVISION 326 – Exhibitor Ages 4 & under

DIVISION 327 – Exhibitor Ages 5 – 8

DIVISION 328 – Exhibitor Ages 9 - 10

DIVISION 329 – Exhibitor Ages 11 - 13

DIVISION 330 – Exhibitor Ages 14 -18

FRIDAY – Any Color

Class

- 1 Tea Roses - (one stem)
- 2 Hydrangeas - (one stem)
- 3 Clematis - (three stems)
- 4 Cone Flower - (one stems)

DIVISION 331 – Exhibitor Ages 4 & under

DIVISION 332 – Exhibitor Ages 5 – 8

DIVISION 333 – Exhibitor Ages 9 - 10

DIVISION 334 – Exhibitor Ages 11 - 13

DIVISION 335 – Exhibitor Ages 14 -18

SATURDAY – Any Color

Class

- 1 Sunflower (one stem)
- 2 Gladiola (one stem)
- 3 Asters (three stems)
- 4 Peony (one stem)

DIVISION 336 – Exhibitor Ages 4 & under

DIVISION 337 – Exhibitor Ages 5 – 8

DIVISION 338 – Exhibitor Ages 9 - 10

DIVISION 339 – Exhibitor Ages 11 - 13

DIVISION 340 – Exhibitor Ages 14 -18

SUNDAY – Any Color

Class

- 1 Daisy, Any (three stems)
- 2 Geranium (three stems)
- 3 Lily (one stem)
- 4 Larkspur (one stem)

SPECIAL CONTESTS OF THE YOUTH & TEEN FLORICULTURE DEPARTMENT



FLOWERING WINE BARREL COMPETITION

Awards Offered:

- **BEST OF SHOW:** Rosette
- **RESERVE BEST OF SHOW:** Rosette



Premiums Offered: First: \$50.00 Second: \$40.00 Third: \$30.00 Fourth: \$15.00

Entry Information:

- Entry Fee: \$7.00
- Entry Limit: Limited to the **first 5 entries**
- Danish System of Judging
- See Still Exhibit Schedule for receiving of entry, judging and pick-up dates/times.

Rules:

- Eligibility: Open to all California Residents, Ages 18 or younger
- Fair can provide an empty wine barrel. Please do not move barrels from where they are placed. Please leave wine barrels free of dirt, plants, etc. when dismantling your exhibit on Monday, June 29, 2026.
- Season to taste with flowers, color foliage and other plants.
- Do not use articles of value.
- No dyed, artificial or painted flowers.
- The following are not permitted in flower shows: Live fish, birds or other animals.
- Any accessories must be secured and shall remain for the duration of the fair.

- Setup will be Sunday, June 21st thru Wednesday, June 24th, 10 am – 6 pm and must be completed and in place by Thursday, June 25th at 10 am.
- All Wine Barrels must meet the following requirements:
 - ◆ A minimum of 50% color
 - ◆ 40% of other living plant material
 - ◆ 10% for other materials and accessories
 - ◆ Refurbishing and watering during the Fair shall take place between 8:00 am and 10:00 am.
 - ◆ If you use any display material that shows a label, the label must be a Yuba, Sutter, Colusa or Butte County product.

DIVISION 341 – Exhibitor Ages 4 & under

DIVISION 342 – Exhibitor Ages 5 – 8

DIVISION 343 – Exhibitor Ages 9 - 10

DIVISION 344 – Exhibitor Ages 11 - 13

DIVISION 345 – Exhibitor Ages 14 -18

FLOWERING WINE BARREL COMPETITION

Class

- 1 Flowering Wine Barrel Competition

FLOWERING WHEEL BARREL/WAGON COMPETITION

Awards Offered:

- **BEST OF SHOW:** Rosette
- **RESERVE BEST OF SHOW:** Rosette

Premiums Offered: First: \$50.00 Second: \$40.00 Third: \$30.00 Fourth: \$15.00

Entry Information:

- Entry Fee: \$7.00
- Entry Limit: No Limit
- Danish System of Judging
- See Still Exhibit Schedule for receiving of entry, judging and pick-up dates/times.

Rules:

- Eligibility: Open to all California Residents, Ages 18 or younger
- You provide the wagon/wheel barrel, new or old.
- Season to taste with flowers, color foliage and other plants.
- Do not use articles of value.
- No dyed, artificial or painted flowers.
- The following are not permitted in flower shows: natural bird nests, "stuffed birds", insects, live fish, birds or other animals.
- Any accessories must be secured and shall remain for the duration of the fair.

- Setup will be Tuesday, June 23rd thru Wednesday, June 24th, 10 am – 6 pm and must be completed and in place by Thursday, June 25th at 10 am.
- All Wagons must meet the following requirements:
 - ◆ A minimum of 50% color
 - ◆ 40% of other living plant material
 - ◆ 10% for other materials and accessories
 - ◆ Refurbishing and watering during the Fair shall take place between 10 am and 12 Noon.
 - ◆ If you use any display material that shows a label, the label must be a Yuba, Sutter, Colusa or Butte County product.

DIVISION 346 – Exhibitor Ages 4 & under

DIVISION 347 – Exhibitor Ages 5 – 8

DIVISION 348 – Exhibitor Ages 9 - 10

DIVISION 349 – Exhibitor Ages 11 - 13

DIVISION 350 – Exhibitor Ages 14 -18

FLOWERING WAGON/WHEEL BARREL COMPETITION

Class

- 1 Flowering Wagon Competition
- 2 Flowering Wheel Barrel Competition



YOUTH & TEEN AGRICULTURE / HORTICULTURE DEPARTMENT

Yuba-Sutter Area's Agricultural Industry!

Did you know that the top ten (10) commodities of Yuba and Sutter counties are: Rice, Walnuts, Peaches, Prunes, Tomatoes, Cattle/calves, Almonds, Wheat, Beans, & Nursery products?

We indeed remain an agricultural area. Our commerce is tied to the seasons of preparing, planting, growing, harvesting and shipping of agricultural products.

Awards Offered:

- **BEST OF SHOW:** \$20 & Rosette
- **RESERVE BEST OF SHOW:** \$10 & Rosette
- **BEST OF DIVISION:** Rosette



Premiums Offered: First: \$7.00 Second: \$5.00 Third: \$3.00

Entry Information:

- Entry Fee: \$1.00
- Entry Limit: **10 entries per exhibitor per division**
- Entries are to be delivered to the Franklin Hall.
- See Still Exhibit Schedule for receiving of entry, judging and pick-up dates/times.

Rules:

- Eligibility: Open to California residents, ages 18 & younger.
- The type of entry desired for exhibit will be the uniform commercial grade.
- The number of vegetables to exhibit and manner of exhibiting are described in How To Prepare Vegetables for Exhibits from the Cooperative Extension Service, University of California.
- The quality desired in agricultural and horticultural exhibits is the same quality that brings the best financial return in the commercial market. Such exhibits must be at least equal in maturity to that state of ripeness required by Section 42513 of the California Agricultural Code in order to be considered for premium awards.
- Items may not be entered in "Any Other" classes if there is a class offered for that item.
- Mature means having reached that stage of ripeness which will insure the completion of the ripening process to a degree which will insure palatability after the removal of the product from the tree, plant or vine.
- Overripe means having an advanced state of maturity, which causes the product to be undesirable for human consumption in a fresh state.

Requirements:

- The exhibitor must have grown products entered in these divisions.
- The Fair will not be responsible for the return of exhibits in this department.
- It is the exhibitor's responsibility to provide replacement perishable produce in the quantity entered.
- Spoiled fruits and vegetables will be removed from the exhibit.
- Number of required products to be delivered with entry follows the class name.

VEGETABLES & DECIDUOUS FRUITS



DIVISION 351 – Exhibitor Ages 4 & under

DIVISION 352 – Exhibitor Ages 5 – 8

DIVISION 353 – Exhibitor Ages 9 - 10

DIVISION 354 – Exhibitor Ages 11 - 13

DIVISION 355 – Exhibitor Ages 14 -18

FRUIT & POD VEGETABLES

Class

- 1 Beans, Any (specify) (12 Pods)
- 2 Peas, Any (specify) (12 Pods)
- 3 Peppers, Bell (4)
- 4 Peppers, Any Other (specify) (5)
- 5 Tomatoes, Cherry (3)

Class

- 6 Tomatoes, Heirloom (3)
- 7 Tomatoes, Any Other (specify) (3)
- 8 Sunflower (1)
- 9 Egg Plant (1)
- 10 Any Other (specify) (5)

ROOT, BULB & TUBER VEGETABLES

Class

- 11 Beets, Any (specify) (5)
- 12 Carrots, Any (specify) (5)
- 13 Garlic, Any (specify) (5)
- 14 Onions, White (3)
- 15 Onions, Red/Yellow (3)

Class

- 16 Potatoes, White (3)
- 17 Potatoes, Red (3)
- 18 Radishes, Any (specify) (5)
- 19 Turnips (3)
- 20 Any Other (specify) (5)

LEAFY & STEM VEGETABLES

Class

- 21 Broccoli (1 bunch)
- 22 Cabbage (1 head)
- 23 Cauliflower (1 bunch)
- 24 Corn, Sweet (3) Leave husks on
- 25 Corn, Other (specify) (3) Leave husks on

Class

- 26 Green Onions (1 bunch)
- 27 Lettuce (2 plants)
- 28 Rhubarb (6 stalks)
- 29 Spinach (1 bunch)
- 30 Any Other (specify)

FRESH HERBS

Class

- 31 Chives
- 32 Mint - Specify Variety
- 33 Oregano

Class

- 34 Parsley (specify)
- 35 Rosemary
- 36 Lavender
- 37 Any Other (specify)

VINE CROPS

Class

- 38 Melon (1)
- 39 Cucumbers, Slicing (3)
- 40 Cucumbers, Pickling (3)
- 41 Watermelon (1)
- 42 Squash, Zucchini (2)

Class

- 43 Squash, Crook Neck (1)
- 44 Squash, Acorn (1)
- 45 Squash, Scallop (1)
- 46 Squash, Any Other (specify) (1)
- 47 Gourds, Ornamental (3)

DECIDUOUS FRUITS

Class

- 48 Peaches, Cling (3)
- 49 Peaches, Freestone (3)
- 50 Apricots (3)
- 51 Nectarines (3)

Class

- 52 Pears (3)
- 53 Plums (3)
- 54 Apples (3)
- 55 Any Other (specify) (3)

PLATE DISPLAYS – Minimum of 3 Varieties/ Maximum of 6 Pieces

Class

- 56 Fruit & Pod Vegetables Plate Display
- 57 Leafy & Stem Vegetables Plate Display
- 58 Root, Bulb & Tuber Vegetables Plate Display
- 59 Deciduous Fruits Plate Display
- 60 Vine Crops Plate Display



NOVELTY PRODUCE

DIVISION 356 – Exhibitor Ages 4 & under

DIVISION 357 – Exhibitor Ages 5 – 8

DIVISION 358 – Exhibitor Ages 9 - 10

DIVISION 359 – Exhibitor Ages 11 - 13

DIVISION 360 – Exhibitor Ages 14 -18

NOVELTY PRODUCE

Entries do NOT have to be grown by exhibitor, but PLEASE get permission from owner to exhibit.

Class

- 1 Any Vegetable or Fruit – Largest Size
- 2 Any Vegetable or Fruit – Tallest
- 3 Any Vegetable or Fruit – Most Unusual by Shape

PRODUCE ART

DIVISION 361 – Exhibitor Ages 4 & under

DIVISION 362 – Exhibitor Ages 5 – 8

DIVISION 363 – Exhibitor Ages 9 - 10

DIVISION 364 – Exhibitor Ages 11 - 13

DIVISION 365 – Exhibitor Ages 14 -18

PRODUCE ART

Entries do NOT have to be grown by exhibitor, but PLEASE get permission from owner to exhibit. May use all fruits, nuts, vegetables, grains, and/ seeds.

Class

- 1 Decorated Single Potato
- 2 Decorated Group of Potatoes
- 3 Vegetable, Fruit &/or Grain Arrangement
- 4 Scarecrow
- 5 Birdhouse
- 6 Decorated Straw Bale
- 7 Any Other (specify)



PLANTS

Awards Offered:

- **BEST OF SHOW:** \$10 & Rosette
- **RESERVE BEST OF SHOW:** \$5 & Rosette
- **BEST OF DIVISION:** Rosette

Premiums Offered: First: \$7.00 Second: \$5.00 Third: \$3.00

Entry Information:

- Entry Fee: \$1.00
- Entry Limit: **5 entries per exhibitor per division**
- Entries are to be delivered to the Franklin Hall.
- See Still Exhibit Schedule for receiving of entry, judging and pick-up dates/times.

Rules:

- Eligibility: Open to California residents, ages 18 and younger.
- The exhibitor must have grown exhibits.
- All plants must be planted in a suitable container.
- Do not enter plants that have been re-potted within thirty (30) days.

DIVISION 366 – Exhibitor Ages 4 & under

DIVISION 367 – Exhibitor Ages 5 – 8

DIVISION 368 – Exhibitor Ages 9 - 10

DIVISION 369 – Exhibitor Ages 11 - 13

DIVISION 370 – Exhibitor Ages 14 -18

PLANTS

Class

- 1 Dish Garden under 12"
- 2 Cactus/Succulents
- 3 Blooming Plant (does not have to be in bloom)
- 4 Any Potted Plant (specify)



NUTS

DIVISION 371 – Exhibitor Ages 4 & under

DIVISION 372 – Exhibitor Ages 5 – 8

DIVISION 373 – Exhibitor Ages 9 - 10

DIVISION 374 – Exhibitor Ages 11 - 13

DIVISION 375 – Exhibitor Ages 14 -18

NUTS – IN SHELL

In shell Nuts - Minimum of one (1) pound. It is permitted to use last year's crop.

Class

- 1 Almonds, Any Variety (specify)
- 2 Walnuts, Any Variety (specify)
- 3 Any Other Type of Nut (specify)



NUTS – SHELLED NUTS

Shell Nuts - Minimum of on half (1/2) pound.

Class

- 4 Almonds, Any Variety (specify)
- 5 Walnuts, Any Variety (specify)
- 6 Any Other Type of Nut (specify)



EGGS

DIVISION 376 – Exhibitor Ages 4 & under

DIVISION 377 – Exhibitor Ages 5 – 8

DIVISION 378 – Exhibitor Ages 9 - 10

DIVISION 379 – Exhibitor Ages 11 - 13

DIVISION 380 – Exhibitor Ages 14 -18

EGGS

Regular (1/2 Dozen in Carton) Display container will be provided.

Class

- 1 White
- 2 Brown
- 3 Blue
- 4 Green
- 5 Any Other (specify)

SPECIAL DISPLAY EGGS

(Six or More Eggs in a creative display) Eggs MUST be secure within the display. All Colors (natural colors mixed OK)

Class

- 6 Creative Display Egg

YUBA-SUTTER COUNTIES COMMODITIES DISPLAY COMPETITION

Awards Offered:

- **BEST OF SHOW:** Rosette
- **RESERVE BEST OF SHOW:** Rosette

Premiums Offered: First: \$300.00 Second: \$200.00 Third: \$100.00 Fourth: \$50.00

Entry Information:

- Entry Fee: \$15.00
- Entry Limit: Limited to the first 5 entries
- Danish System of Judging
- See Still Exhibit Schedule for receiving of entry, judging and pick-up dates/times.

Rules:

- Open to any youth group residing in Yuba & Sutter Counties, i.e. 4-H, FFA, Church Groups, school clubs, sport teams, etc.
- Displays **MUST** be designed, constructed, installed and all artwork completed by the youth.
- Adults are to only advise.
- Adult help may cause the exhibit to be disqualified.
- Limit one display per group.
- If electricity is needed please state on entry form.
- **The theme for this year is: 'Barn in the USA'.**
- The judging will be based on the utilization of agricultural product(s) grown in Yuba and Sutter Counties.
- The display can show what the group has learned, the activities in which they have participated and/or the contributions of their organization to their community.
- Judges shall insist upon a high quality of products and materials used in the exhibit.
- Exhibitors must make arrangements to replace all fruits and vegetables, which deteriorate during the fair. This must be completed each day prior to noon.
- For Fire proofing requirements see LOCAL RULES AND INFORMATION page.
- The display area shall be no larger than 10' x 10'.
- Displays will be placed outside the Flower Building.
- Your display should not contain items of value.
- Setup will start Sunday, June 21st, 10 am – 6 pm thru Wednesday, June 24th, 10 am – 6 pm and must be completed and in place by Thursday, June 25th at 10 am.
- Display must be removed between 9 am – 6 pm, Monday, June 29, 2026.
- All garden square footage must meet the following requirements:
 - ◆ A minimum of 40% flowers.
 - ◆ 30% of other living plant material.

- ◆ 30% for other materials, pathways, ponds, rocks, patios.
- ◆ Refurbishing and watering during the Fair shall take place from 10 am to 12 Noon.
- ◆ Exhibitors should strive to promote the theme.
- ◆ If you use any display material that shows a label, the label must be a Yuba, Sutter, Colusa or Butte County product.

DIVISION 381 - COMMODITIES DISPLAY COMPETITION

Class

- 1 Commodities Display Competition



4-H / FFA INDUSTRIAL & VOCATIONAL SKILL PROJECTS

Rules:

- Enter online at www.ysfair.com click ENTER THE FAIR.
- **Online Entries close on May 31, 2026.**
- No Late entries will be accepted.

4-H / FFA INDUSTRIAL & VOCATIONAL SKILL PROJECTS (NOT IN THE AUCTION)

Awards Offered:

- **BEST OF SHOW:** \$30.00 and Rosette
- **RESERVE BEST OF SHOW:** \$20.00 and Rosette
- **BEST OF DIVISION:** Rosette

Premiums Offered: First: \$10.00 Second: \$7.00 Third: \$5.00 Fourth: \$3.00

Entry Information:

- Entry Fee: \$2.00
- Entry Limit: 2 entries per exhibitor per division
- Danish System of Judging
- Entries are to be delivered to the Franklin Hall.
- See Still Exhibit Schedule for receiving of entry, judging and pick-up dates/times.

Rules:

- Competition is open to all 4-H and FFA members in good standing in Yuba and Sutter Counties and are 9 - 18 years of age.
- Only projects constructed or fabricated in school or under the supervision of an instructor or 4-H leader by a student enrolled in an Industrial Technology/Agriculture education course or 4-H project group will be acceptable.
- Only projects started on or after the first day of the current school/4-H year for 2025-2026 are eligible for entry in the 2026 Yuba-Sutter Fair.
- All entries must be constructed in a manner safe for public viewing.
- * Group/School Projects may consist of two or more individuals, a classroom, FFA Chapter, 4-H Club or other recognized youth organization.

General Judging Guidelines as follows:

- | | |
|------------------------------|-------------------|
| • General Appearance | 25 points |
| • Function/Practicality | 25 points |
| • Technical Quality | 25 points |
| • Workmanship/General Finish | <u>25 points</u> |
| Total | 100 points |

DIVISION 801 – METALS – INDIVIDUAL EXHIBITOR PROJECT (NOT IN AUCTION)

DIVISION 802 – METALS – *GROUP/SCHOOL PROJECT (NOT IN AUCTION)

Class

- 1 Metal Shop – Welding (specify)
- 2 Metal Shop - Sheet Metal (specify)
- 3 Restoration (specify)
- 4 Other (for all projects that don't fit the above categories) (specify)

DIVISION 803 – WOODWORKING – INDIVIDUAL EXHIBITOR PROJECT (NOT IN AUCTION)

DIVISION 804 – WOODWORKING – GROUP/SCHOOL PROJECT (NOT IN AUCTION)

Class

- 1 Small Project (specify)
- 2 Medium Project (specify)
- 3 Large Project (specify)

DIVISION 805 – ELECTRICAL – INDIVIDUAL EXHIBITOR PROJECT (NOT IN AUCTION)

DIVISION 806 – ELECTRICAL – GROUP/SCHOOL PROJECT (NOT IN AUCTION)

Class

- 1 Small Project (specify)
- 2 Medium Project (specify)
- 3 Large Project (specify)

DIVISION 807 – PLUMBING – INDIVIDUAL EXHIBITOR PROJECT (NOT IN AUCTION)

DIVISION 808 – PLUMBING – GROUP/SCHOOL PROJECT (NOT IN AUCTION)

Class

- 1 Small Project (specify)
- 2 Medium Project (specify)
- 3 Large Project (specify)



4-H / FFA INDUSTRIAL & VOCATIONAL SKILL PROJECTS (INTENDED FOR THE LIVE AUCTION)

Awards Offered:

- **BEST OF SHOW:** \$50.00 Rosette
- **RESERVE BEST OF SHOW:** \$25.00 Rosette
- **BEST OF DIVISION:** Rosette

Entry Information:

- Entry Fee: \$25.00
- Entry Limit: One entry per exhibitor for the Live Auction Division
- Danish System of Judging
- Entries are to be delivered to the Franklin Hall.
- See Still Exhibit Schedule for receiving of entry, judging and pick-up dates/times.

Rules:

- The sale of student-built projects during the livestock auction is open to all 4-H and FFA members in good standing in Yuba and Sutter Counties.
- Only projects started on or after the first day of the current school/4-H year for 2025-2026 are eligible for entry in the 2026 Yuba-Sutter Fair Jr. Livestock/Vocational Auction.
- A student may enter a maximum of one entry for the auction. A student cannot participate in the Industrial/Vocational Skill Live Auction if he/she is participating in the Livestock Auction.
- Exhibitors are required to be present at the time of judging (see judging schedule) for interviews and the taking of pictures for sales placards. Exhibitors must be in official show uniform (see Livestock Dept. for Show Uniform Guidelines) for these pictures and for the auction sale.
- Exhibitors are required to submit documentation (FFA or 4-H record book) with their entries to assist during the judging process. The record book must document all stages of construction from beginning through completion to be considered as "auction ready".
- Only projects constructed or fabricated in school or under the supervision of an instructor or 4-H leader by a student enrolled in an Industrial Technology/Agriculture education course or 4-H project group will be acceptable.
- The exhibitor in whose name they are entered, shown and sold by the exhibitor at the auction, and to whom the premium is to be paid must have made entries.
- All entries must be constructed in a manner safe for public viewing.
- Exhibitor must set a valuation on his/her entry. This value should be represented on the record budget page or may be a part of the display.
- Submission of entry to this competition implies acceptance of all rules and conditions as stated in the Yuba-Sutter Guidebook and State Rules.
- 7% Commission will be withheld on all Industrial/Vocational Skill Live Auction items.
- The Industrial/Vocational Skill Live Auction will start at 9:00 am on Saturday, June 27th, in the Auction Pavilion.
- Exhibitor must be present and sale their own Industrial/Vocational Skill Live Auction Project at the auction.
- Pictures will be at 10 am on Thursday, June 25th, for the auction projects, judging will be at 9 am on Thursday, June 25, 2026.

General Judging Guidelines as follows:

- | | |
|------------------------------|-------------------|
| • General Appearance | 25 points |
| • Function/Practicality | 25 points |
| • Technical Quality | 25 points |
| • Workmanship/General Finish | <u>25 points</u> |
| Total | 100 points |

Auction Ready - 80 points or higher scored by the judges.

DIVISION 809 – INDUSTRIAL/VOCATIONAL SKILL LIVE AUCTION PROJECT - LIVE AUCTION

Must enter one of the below classes to be in the Live Auction.

Class

- 1 Small Project (specify)
- 2 Medium Project (specify)
- 3 Large Project (specify)

4-H / FFA INDUSTRIAL & VOCATIONAL SKILL PROJECTS (INTENDED FOR THE SILENT AUCTION)

Awards Offered:

- **BEST OF SHOW:** \$25.00 Rosette
- **RESERVE BEST OF SHOW:** \$10.00 Rosette
- **BEST OF DIVISION:** Rosette

Premiums Offered: First: \$10.00 Second: \$8.00 Third: \$5.00

Entry Information:

- Entry Fee: \$5.00
- Entry Limit: One entry per exhibitor for the Silent Auction Division
- Danish System of Judging for Premiums offered
- American System of Judging to determine top 25 entries.
- Entries are to be delivered to the Franklin Hall Building.
- See Still Exhibit Schedule for receiving of entry, judging and pick-up dates/times.

Rules:

- A limit of up to **25** projects will be sold in the silent auction.
- Only the top **25** ranked entries will be eligible to sell in the silent auction.
- Exhibitors are eligible to sell one silent auction entry and one live auction entry.
- Maximum size of the project is 4' footprint with no height restriction.
- The sale of student-built projects during the livestock auction is open to all 4-H and FFA members in good standing in Yuba and Sutter Counties.
- Only projects started on or after the first day of the current school/4-H year for 2025/2026 are eligible for entry in the 2026 Yuba-Sutter Fair Junior Livestock/Vocational Auction.

- A student may enter a maximum of one entry for the silent auction. A student may participate in the Silent Auction if he/she is participating in the Livestock Auction.
- Only projects constructed or fabricated under adult supervision will be acceptable.
- All entries must be constructed in a manner safe for public viewing.
- Exhibitor must set a valuation on his/her entry. This value should be represented on the entry form.
- Submission of entry to this competition implies acceptance of all rules and conditions as stated in the Yuba-Sutter Guidebook and State Rules.
- 7% Commission will be withheld on all Industrial/Vocational Skill Silent Auction Projects.
- The Silent Auction will be from 9 am – 2 pm on Saturday, June 27th near the Sale Ring area.
- Exhibitor must be present to help move and setup their own Industrial/Vocational Skill Project for the silent auction.
- The Yuba-Sutter Fair is NOT responsible for items left on the fairgrounds 24 hours after last day of fair.
- Once the Industrial/Vocational Skill Project goes thru the auction or silent auction and was purchased the exhibitor is not to remove it from the fairgrounds, unless the buyer has made arrangements with the exhibitor to deliver the auction item. Must let the administrative office know about arrangements.

General Judging Guidelines as follows:

• General Appearance	25 points
• Function/Practicality	25 points
• Technical Quality	25 points
• Workmanship/General Finish	<u>25 points</u>
Total	100 points

Silent Auction Ready – 80 points or higher scored by the judges.

DIVISION 810 – INDUSTRIAL/VOCATIONAL SKILL PROJECT – INDIVIDUAL - SILENT AUCTION

Class

- 1 Wood (specify)
- 2 Metal (specify)
- 3 Restoration (specify)
- 4 Other (for all projects that don't fit the above categories (specify))

4-H ARCHERY

Entry Fee: \$4.00 per entry

Awards Offered: First: Gold Medal Second: Silver Medal Third: Bronze Medal

Premiums Offered: First: \$10.00 Second: \$8.00 Third: \$5.00

How to Enter:

- Enter online at www.ysfair.com click ENTER THE FAIR.
- **Online Entries close on May 31, 2026.**
- No late entries will be accepted.

Rules:

- Open to Yuba and Sutter 4-H exhibitors only.
- American System of Judging will take place.
- All Exhibitors must be enrolled in a Yuba-Sutter 4-H Archery Group.
- Any bow that does not violate the conventional meaning of the term in target archery maybe used in 4-H Archery events.
- Recurve Bows – Longbows or recurve bows of conventional design only maybe used in any recurve division of archery events.
- Compound Bows – Compound bows of any conventional design maybe used in compound bow division of archery events.
- Arrows – Arrows consist of a shaft with a head, nock, fletching and personal identification markings.
- Adequate Supply – Each archer must provide an adequate number of arrows to complete the required course of fire.
- Safety – Arrows must be sound and properly spined for the bow.
- Arrow – Only target or field points may be used in 4-H Archery events.
- Archery equipment to be used in a 4-H Archery event should be inspected by leaders prior to the event and in compliance with all 4-H rules.
- Practice Shooting – No practice shooting will be permitted on the day of the shoot except as specifically permitted and in specifically identified areas.
- Nocking Arrows – Arrows may be nocked only after the appropriate command to fire is given.
- Drawing Bows – Bows may be drawn only on the firing line.
- Time Limits – 4-Her's have a total of four (4) minutes to shoot six (6) arrows.
- Scoring – Targets will be scored by an official appointed by the Fair management.
- 4-Her's may not touch any arrows in the target until they have been officially scored.
- Scoring Values – From center of target outward, the scoring areas are 10,9,8,7,6,5, etc. depending on targets. Shots outside the scoring area are scored as misses. The number of X's shot by each archer will be recorded to be used in the event of a tie.
- Scoring Lines – The lines between scoring line receives the higher value score.
- Shaft Location – Point values will be determined by the location of the shaft as it rests in the target.
- Pass-throughs or Bounce-outs – Any shaft that fails to remain in the target will be scored based on the value of the lowest un-marked hole in the target face.
- Cross-fires – No 4-Her's will knowingly shoot at the wrong target. Arrows fired at the wrong target will be scored as misses (0's).

- Excessive shots – No 4-H'ers will knowingly shoot more than the required number of arrows at their own target. Excess arrows shot will result in the deduction of the highest value arrows on the target until the appropriate number is reached. In addition, a one-point penalty will be deducted for each excess arrow shot.
- Dropped or Misfired Arrows – Arrows falling beyond the reach of the 4-H'ers or the extended bow will be considered shot. The official may determine that a replacement arrow be shot.
- Shooter Position – 4-H'ers must remain more than one arm-length away from the target and their shafts until scoring is complete and the official scorer has cleared them. To pull their shafts.
- Initialing the Score Card – 4-H'ers and the scorer shall initial each score card to affirm agreement with the score awarded. Any dispute in the scoring must be settled by the official immediately. Once score cards have been signed, no appeal is permitted. All scores will be agreed upon and totals shall match before the 4-H'ers touch or remove any arrows from the target face. In the event of a disputed call, the official will determine the appropriate score. All 4-H'ers will initial their scorecards before leaving the scoring area.
- Tie Breaking Procedure - In the event there is a tie the following tie-breaking procedure will be followed. Ties will be decided by counting the greatest number of X's, then 10's, then 9's, etc. scored in the round by each tied individual.
- Replacement of Equipment – A leader may provide replacement or additional equipment as needed after obtaining permission from the official.
- Leaders must conduct themselves in a quiet, supportive and cooperative manner at all times. Leaders that violate rules, distract other 4-H'ers or appear to distract their own 4-H'ers will be given 1 verbal warning. If a second warning has to be given, that leader will be pulled and will be moved behind the spectator line. If the leader is still disruptive, he or she will be removed from the range.
- Only designated scorers are allowed down range. Leaders and parents are not allowed to go down range to the targets unless instructed by the official.

DIVISION 901 – RECURVE BOW

10 YARDS

Class

- 1 Cloverleaf – Ages **9 - 10**
- 2 Junior – Ages **11 - 13**
- 3 Senior – Ages **14 - 19**

15 YARDS

Class

- 4 Cloverleaf – Ages **9 - 10**
- 5 Junior – Ages **11 - 13**
- 6 Senior – Ages **14 - 19**

20 YARDS

Class

- 7 Cloverleaf – Ages **9 - 10**
- 8 Junior – Ages **11 - 13**
- 9 Senior – Ages **14 - 19**

DIVISION 902 – COMPOUND BOW WITHOUT SIGHTS

10 YARDS

Class

- 1 Cloverleaf – Ages **9 - 10**
- 2 Junior – Ages **11 - 13**
- 3 Senior – Ages **14 - 19**

15 YARDS

Class

- 4 Cloverleaf – Ages **9 - 10**
- 5 Junior – Ages **11 - 13**
- 6 Senior – Ages **14 - 19**

20 YARDS

Class

- 7 Cloverleaf – Ages **9 - 10**
- 8 Junior – Ages **11 - 13**
- 9 Senior – Ages **14 - 19**

DIVISION 903 – COMPOUND BOW WITH SIGHTS

10 YARDS

Class

- 1 Cloverleaf – Ages **9 - 10**
- 2 Junior – Ages **11 - 13**
- 3 Senior – Ages **14 - 19**

15 YARDS

Class

- 4 Cloverleaf – Ages **9 - 10**
- 5 Junior – Ages **11 - 13**
- 6 Senior – Ages **14 - 19**

20 YARDS

Class

- 7 Cloverleaf – Ages **9 - 10**
- 8 Junior – Ages **11 - 13**
- 9 Senior – Ages **14 - 19**

NOTE PAGE