

JUNIOR SHEEP

SHEEP SHOWMANSHIP

Entry Fee: \$10.00 per entry

Premiums Offered: First: \$35.00 Second: \$25.00 Third: \$15.00

Awards Offered:

- 4-H Champion & Reserve Champion Novice Sheep Showman
- 4-H Champion & Reserve Champion Junior Sheep Showman
- 4-H Champion & Reserve Champion Senior Sheep Showman
- FFA Champion & Reserve Champion Novice Sheep Showman
- FFA Champion & Reserve Champion Advanced Sheep Showman

How to Enter:

- Enter online at www.yfsfair.com click ENTER THE FAIR.
- Online Entries close on **May 27, 2022**.
- Showmanship must be pre-entered. No entry available at ringside

Guidelines:

- See Livestock Schedule for receiving/release of livestock and Schedule of Events for the Fair.
- All Local and State Rules apply.
- Competition is open to all Junior Exhibitors that reside in Yuba and Sutter County OR are a member of a Yuba-Sutter 4-H, FFA or Grange program or a registered Independent only.

4-H Showmanship Definitions:

- Novice: Those exhibitors who have never shown in any prior Sheep Showmanship class at any county, district or state fair. 4-H Spring Fair and/or Primary Showmanship do not qualify as prior showmanship experience. First and second place winners from the Novice class may move to the Junior or Senior class, providing the winner is of the correct age for the class.
- Junior: Those exhibitors thirteen (13) years of age and under as of January 1, 2022. Junior winners do not advance to the Senior division. There is a Junior Master Showmanship Competition for Junior Exhibitors.
- Senior: Those exhibitors fourteen (14) years of age and older as of January 1, 2022.

FFA Showmanship Definitions:

- Novice: Those exhibitors who have never shown in any prior 4-H or FFA Sheep Showmanship class at any other county, district or state fair. The first and second place winner in the Novice showmanship class may compete in the Advanced Showmanship Class for cash awards.
- Advanced: Those exhibitors who have had prior 4-H or FFA Sheep Showmanship experience.

DIVISION 434 - 4-H NOVICE SHOWMANSHIP

DIVISION 435 - 4-H JUNIOR SHOWMANSHIP

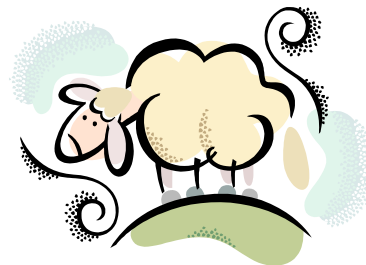
DIVISION 436 - 4-H SENIOR SHOWMANSHIP

DIVISION 437 - FFA NOVICE SHOWMANSHIP

DIVISION 438 - FFA ADVANCED SHOWMANSHIP

Class

- 1 Sheep Showmanship



MARKET LAMBS

Entry Fee: \$25.00 per entry

Danish System of Judging - No Premiums Offered

Awards Offered:

- 4-H Champion & Reserve Champion Speckle/Brockle/White Face Market Lamb & 3rd Overall
- 4-H Champion & Reserve Champion Black Face Market Lamb & 3rd Overall
- 4-H Grand Champion & Reserve Grand Champion Market Lamb & 3rd Overall
- FFA Champion & Reserve Champion Speckle/Brockle/White Face Market Lamb & 3rd Overall
- FFA Champion & Reserve Champion Black Face Market Lamb & 3rd Overall
- FFA Grand Champion & Reserve Grand Champion Market Lamb & 3rd Overall
- Supreme Champion & Reserve Supreme Champion Market Lamb & 3rd Overall

How to Enter:

- Enter online at www.ysfair.com click ENTER THE FAIR.
- Online Entries close on **April 24, 2022.**

Guidelines:

- See Livestock Schedule for receiving/release of livestock and Schedule of Events for the Fair.
- All Local and State Rules apply.
- Limit of one (1) market animal shown per exhibitor.
- Sale Weight: 100 -160 pounds – No top weight
- Color/Division Classifications will be verified and officially determined at the official weigh-in.
- Only 4-H Grand & Reserve Grand Champion, FFA Grand & Reserve Grand Champion, Supreme & Reserve Supreme Champions will sell in the Sale of Champions.
- Animals judged market ready must sell in the Jr. Livestock Auction.
- Animals judged NOT MARKET READY are required to be removed from the grounds on Friday, June 24, 2022 by 9:00 am.

DIVISION 439 - 4-H SPECKLE/BROCKLE/WHITE FACE MARKET LAMBS

DIVISION 440 - 4-H BLACK FACE MARKET LAMBS

DIVISION 441 - FFA SPECKLE/BROCKLE/WHITE FACE MARKET LAMBS

DIVISION 442 - FFA BLACK FACE MARKET LAMBS

Class

- 1 Single Market Lamb
- 2 Backup Market Lamb



BRED & FED MARKET LAMBS

Entry Fee \$10.00 per entry

Premiums Offered: First: \$20.00 Second: \$15.00 Third: \$10.00

Awards Offered:

Champion Bred & Fed Market Lamb
Reserve Champion Bred & Fed Market Lamb

How to Enter:

- Enter online at www.ysfair.com click ENTER THE FAIR.
- Online Entries close on **April 24, 2022**.

Guidelines:

- See Livestock Schedule for receiving/release of livestock and Schedule of Events for the Fair.
- All Local and State Rules apply.
- Exhibitor must have owned the dam at the time of the animal's conception and the exhibitor must have provided primary care for the animal from birth through the fair.
- 4-H and FFA will compete together.
- Animals must have been shown in a Market Class.
- All Color/Division classifications will show together.
- Must complete the breeder information at the time of online entry.

DIVISION 443 - BRED AND FED MARKET LAMB

Class

1 Bred and Fed Market Lamb

CLUB & CHAPTER GROUP OF MARKET LAMBS

Entry Fee: None

Awards Offered:

4-H Champion & Reserve Champion Market Lambs Group of 3
FFA Champion & Reserve Champion Market Lambs Group of 3

How to Enter:

- Enter online at www.ysfair.com click ENTER THE FAIR.
- Online Entries close on **May 27, 2022**.

Rules:

- See Livestock Schedule for receiving/release of livestock and Schedule of Events for the Fair.
- All Local and State Rules apply.
- Limit of one (1) entry per class per club/chapter.
- Enter by Club or Chapter name.

DIVISION 444 - 4-H MARKET LAMB PEN OF 3

DIVISION 445 - FFA MARKET LAMB PEN OF 3

Class

BREEDING SHEEP

Entry Fee: \$10.00 per entry

Premiums Offered: First: \$20.00 Second: \$15.00 Third: \$10.00

Division Champions:

- | | |
|---|--|
| Champion & Reserve Champion Meat Ram | Champion & Reserve Champion Meat Ewe |
| Champion & Reserve Champion Wool Ram | Champion & Reserve Champion Wool Ewe |
| Champion & Reserve Champion Wether Sire Ram | Champion & Reserve Champion Wether Dam Ewe |
| Supreme & Res Supreme Champion Ram | Supreme & Res Supreme Champion Ewe |

How to Enter:

- Enter online at www.yfair.com click ENTER THE FAIR.
- Online Entries close on **May 27, 2022**.

Guidelines:

- See Livestock Schedule for receiving/release of livestock and Schedule of Events for the Fair.
- All Local and State Rules apply.
- Limit of 2 (two) Breeds per exhibitor (6 animals per breed).

DIVISION 446 - REGISTERED MEAT BREEDS

DIVISION 447 - REGISTERED WOOL BREEDS

Rams

Class

- 1 Yearling 09/1/20 – 08/31/21
- 2 Fall Lamb 09/1/21 – 12/31/21
- 3 Spring Lamb 01/1/22 – 05/01/22
- 4 Pair of Ram Lambs – Two ram lambs owned by the exhibitor



Ewes

Class

- 5 Yearling 09/1/20 – 08/31/21
- 6 Pair of Yearling Ewes
- 7 Fall Lamb 09/1/21 – 12/31/21
- 8 Spring Lamb 01/1/22 – 05/01/22
- 9 Pair of Ewes Lambs – Two ewe lambs owned by the exhibitor

Groups

Class

- 10 Young Flock – one (1) ram lamb, two (2) ewe lambs owned by the exhibitor
- 11 Flock – one (1) yearling or ram lamb, two (2) yearling ewes and two (2) ewe lambs
- 12 Get of Sire – Four (4) animals sired by the same sire

DIVISION 448 – WETHER DAM/WETHER SIRE

Classes to be determined by weight. Check Schedule for weigh-in time.

Rams

Class

- 1 Ram (Classes will be determined and sorted by weight.)
- 2 Pair of Rams - Two rams owned by the exhibitor

Ewes

Class

- 3 Ewe (Classes will be determined and sorted by weight.)
- 4 Pair of Ewes – Two ewes owned by the exhibitor

BRED & OWNED REGISTERED BREEDING SHEEP

Entry Fee \$10.00 per entry

Premiums Offered: First: \$20.00 Second: \$15.00 Third: \$10.00

Awards Offered:

Champion & Reserve Champion Bred & Owned Breeding Ram
Champion & Reserve Champion Bred & Owned Breeding Ewe

How to Enter:

- Enter online at www.ysfair.com click ENTER THE FAIR.
- Online Entries close on **May 27, 2022**.

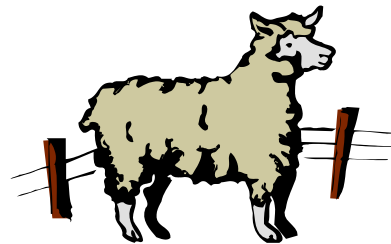
Guidelines:

- See Livestock Schedule for receiving/release of livestock and Schedule of Events for the Fair.
- All Local and State Rules apply.
- This award will be given to the exhibitor with a registered animal that they bred and currently own. They must have owned the dam at the time of the animal's conception and the exhibitor must have provided primary care for the animal from birth through the fair.
- 4-H and FFA will compete together.
- Animals must have been shown in a Registered Breeding Sheep Class.
- Animals entered in the Wether Sire and Dam Division are not eligible to show in this division.
- All breeds will show together.
- Must complete the breeder information at the time of online entry.

DIVISION 449 - BRED AND OWNED SHEEP

Class

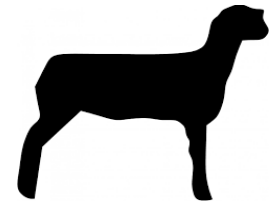
- 1 Ram
- 2 Ewe





MARKET LAMB

Quick Reference Entry Information



Please follow these steps to enter a Market Lamb for the 2022 Yuba-Sutter Fair:

1. Complete your online entry by no later than APRIL 24, 2022.
2. Complete a Quality Assurance and Ethics Training Course for all Jr. Livestock Exhibitors.

ENTRY INFORMATION	DIVISION #	CLASS #
Market Lamb: Entry Fee \$25.00		
Fair-time Minimum/Maximum Weight Requirements: 100 to 160 lbs – No top weight		
4-H Speckle/Brockle/White Face Market Lamb	439	1
4-H Black Face Market Lamb	440	1
4-H Speckle/Brockle/White Market Lamb Backup	439	2
4-H Black Face Market Lamb Backup	440	2
FFA Speckle/Brockle/White Market Lamb	441	1
FFA Black Market Lamb	442	1
FFA Speckle/Brockle/White Market Lamb Backup	441	2
FFA Black Market Lamb Backup	442	2
4-H Sheep Showmanship – Entry Fee \$10.00		
4-H Novice & Independent (age 9–13) (1st year of specie)	434	1
4-H Junior & Independent (age 9-13)	435	1
4-H Senior (age 14 & over)	436	1
FFA Sheep Showmanship – Entry Fee \$10.00		
FFA Novice & Independent (age 14 & over) (1st year of specie)	437	1
FFA Advanced & Independent (age 14 & over)	438	1

Did you complete your online entry?

- Login and complete exhibitor information
- Enter Showmanship
- Enter Market Class
- Be sure your Fair Ear Tag on Market Animals is accurate
- Enter Breeding or other Class(es) that are applicable
- Enter all required information on Livestock entered
- Pay online and submit entries
- Print out receipt for your records
- Upload required photos of Livestock
- Sign and turn in the Exhibitors Responsibility Form

Fair-time Arrival Date & Time
Sheep
Sunday, June 19th 5:00 pm to 8:00pm
Monday, June 20th 5:00 am to 3:00 pm
All Sheep must be in place by no later than 3:00

Fair-time Weigh-In Date & Time
Market Lamb
Monday, June 21st
3:00 pm to 5:00 pm
Sheep Scale